

## 2014 Ford F-250 Platinum 4X4 LIFTED,BUMPERS,LED'S,AXE 22'S,95K

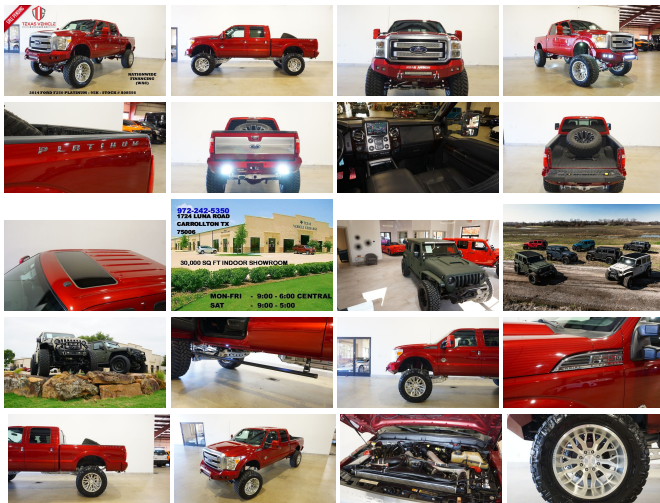
View this car on our website at [tveauto.com/7068627/ebrochure](http://tveauto.com/7068627/ebrochure)



Our Price **\$49,900**

### Specifications:

|               |   |
|---------------|---|
| Year:         | 2014  |
| VIN:          | 1FT7W2BT5EEA08556                                       |
| Make:         | Ford  |
| Stock:        | A08556  |
| Model/Trim:   | F-250 Platinum 4X4<br>LIFTED,BUMPERS,LED'S,AXE 22'S,95K |
| Condition:    | Pre-Owned   |
| Body:         | Pickup Truck  |
| Exterior:     | Ruby Red Metallic Tinted Clearcoat                      |
| Engine:       | ENGINE: 6.7L 4 VALVE POWER<br>STROKE DIESEL V8 (B20)    |
| Interior:     | Black Leather   |
| Transmission: | TRANSMISSION: TORQSHIFT 6-SPEED<br>AUTO W/OD (6.7L)     |
| Mileage:      | 95,848  |
| Drivetrain:   | 4 Wheel Drive   |



NATION WIDE FINANCING

SUBMIT CREDIT APP [WWW.TVEAUTO.COM](http://WWW.TVEAUTO.COM)

OR CALL 972-242-5350

2014 FORD F250 PLATINUM CREW-CAB  
4X4, 6.7L V8 TURBO DIESEL ENGINE,  
AUTOMATIC TRANSMISSION, ONLY 95K,  
RUBY RED METALLIC W/BLACK LEATHER  
INTERIOR, CARFAX REPORTS 2 OWNERS  
NO ACCIDENTS, APPEARS TO BE A NON-  
SMOKER, REMOTE START, CUSTOM  
TUNER, ROAD ARMOR FRONT WITH RIGID  
INDUSTRIES LED LIGHT BAR & 4 RIGID  
INDUSTRIES DUALY D2 LED LIGHTS,  
FABTECH 10" SUSPENSION LIFT KIT WITH  
DIRT LOGIC SHOCKS, DIRT LOGIC DUAL

SHOCK STEERING STABILIZER KIT,  
POWDER COATED SUSPENSION PARTS  
RED, LED ROCK LIGHTS, SUNROOF,  
NAVIGATION, BACK-UP CAMERA, AMP  
RESEARCH POWERSTEP RUNNING  
BOARDS WITH LED LIGHT KIT, POWER  
WINDOWS, POWER DOOR LOCKS, POWER  
FOLDING & TELESCOPING TRAILER  
TOWING HEATED MIRRORS WITH TURN  
SIGNALS, HEATED TILT/TELESCOPE  
STEERING WHEEL WITH AUDIO & CRUISE  
CONTROLS, DUAL POWER HEATED &  
COOLED FRONT SEATS WITH DRIVER 2  
MEMORY POSITION, TRACTION CONTROL,  
HILL DESCENT CONTROL, TRAILER BRAKE  
CONTROLLER, UPFITTER SWITCHES, ICE  
COLD A/C, DUAL CLIMATE CONTROL, SONY  
HD AM/FM/SIRIUS STEREO WITH CD  
PLAYER, MICROSOFT SYNC VOICE  
ACTIVATED SYSTEM, SELF DIMMING REAR  
VIEW MIRROR, HOMELINK GARAGE  
CONTROLS, DUAL LIGHTED VANITY  
MIRRORS, REAR HEATED SEATS, REAR A/C  
VENTS, POWER SLIDING REAR WINDOW,  
SPRAY IN BEDLINER, MATCHING NITTO  
TRAIL GRAPPLER SPARE TIRE MOUNTED  
IN THE BED, TAILGATE STEP, ROAD  
ARMOR REAR BUMPER WITH 2 LED  
LIGHTS, REAR PARK DISTANCE SENSORS,  
TOW PACKAGE WITH RECEIVER HITCH,  
AFTERMARKET EXHAUST, NO FLOOR  
MATS, OWNER'S MANUAL, 1 KEY/1  
REMOTE, 22" AXE COMPRESSION FORGED  
WHEELS, FRONT TIRES ARE NITTO TRAIL  
GRAPPLER M/T 40X15.50R/22, REAR TIRES  
ARE NITTO TRAIL GRAPPLER M/T  
40X15.50R/22. RUNS AND DRIVES GREAT.  
GIVE US A CALL @ 972-242-5350 OR STOP  
BY FOR A TEST DRIVE. 1724 LUNA RD IN  
CARROLLTON - 2 MILES NORTH OF 635.  
CLICK ON CARFAX ICON TO VIEW A FULL  
REPORT AT NO COST TO YOU.

Our Location :



2014 Ford F-250 Platinum 4X4 LIFTED,BUMPERS,LED'S,AXE 22'S,95K  
Texas Vehicle Exchange - 972-242-5350 - View this car on our website at [tveauto.com/7068627/ebrochure](http://tveauto.com/7068627/ebrochure)

Installed Options

Interior

- 10-Way Power Driver Seat -inc: Power Recline, Height Adjustment, Fore/Aft Movement, Cushion Tilt and Power 2-Way Lumbar Support
- 10-Way Power Passenger Seat -inc: Power Recline, Height Adjustment, Fore/Aft Movement, Cushion Tilt and Power 2-Way Lumbar Support
- Driver And Passenger Visor Vanity Mirrors w/Driver And Passenger Illumination
- Front Seats w/Power 2-Way Driver Lumbar
- Gauges -inc: Speedometer, Odometer, Oil Pressure, Engine Coolant Temp, Tachometer, Inclinator, Transmission Fluid Temp, Engine Hour Meter, Trip Odometer and Trip Computer
- Power 1st Row Windows w/Driver And Passenger 1-Touch Up/Down
- Power Door Locks w/Autolock Feature- Power Rear Windows
- Premium Leather Seating Surfaces 40/Console/40 -inc: 10-way power driver and passenger seating, easy entry/exit memory feature, 4-way adjustable driver/passenger headrests, matching 60/40 rear bench w/partitioned locking under-seat storage, 12V powerpoint and 110v/150w inverter outlet in rear console
- Remote Keyless Entry w/Integrated Key Transmitter, Illuminated Entry and Panic Button
- Trip Computer- 2 Seatback Storage Pockets- 5 12V DC Power Outlets
- 60-40 Folding Split-Bench Front Facing FlexFold Flip Forward Cushion/Seatback Rear Seat
- Analog Appearance- Cruise Control w/Steering Wheel Controls
- Day-Night Auto-Dimming Rearview Mirror- Delayed Accessory Power
- Dual Zone Front Automatic Air Conditioning- Fade-To-Off Interior Lighting
- Front And Rear Map Lights- Front Cupholder
- Full Carpet Floor Covering -inc: Carpet Front And Rear Floor Mats - Full Cloth Headliner
- Full Floor Console w/Locking Storage and 5 12V DC Power Outlets - Glove Box
- HVAC -inc: Underseat Ducts and Console Ducts
- Instrument Panel Bin, Covered Dashboard Storage, Driver / Passenger And Rear Door Bins and Locking 2nd Row Underseat Storage
- Interior Trim -inc: Chrome/Metal-Look Interior Accents - Keypad
- Manual Adjustable Rear Head Restraints- Manual Tilt/Telescoping Steering Column
- Outside Temp Gauge- Perimeter Alarm- Rear Cupholder- Remote Start System

Option Packages

Factory Installed Packages

|   |         |
|---|---------|
| ENGINE: 6.7L 4 VALVE POWER STROKE DIESEL V8 (B20)   |         |
| -inc: 26 Gallon Fuel Tank, 3.31 Axle Ratio, Dual 78-AH 750 CCA Batteries                                      | \$8,315 |
| TRANSMISSION: TORQSHIFT 6-SPEED AUTO W/OD (6.7L)  |         |
| -inc: SelectShift   |         |
| ENGINE BLOCK HEATER   | \$75    |
| FX4 OFF-ROAD PACKAGE  |         |
| -inc: Hill Descent Control, Colored Front & Rear Rancho Branded Shocks, Transfer Case & Fuel Tank Skid Plates | \$295   |
| HEATED REAR SEATS   | \$300   |
| POWER MOONROOF  |         |
| -inc: map lights and moonroof switches  | \$995   |
| UPFITTER SWITCHES (4)   |         |
| -inc: Located on instrument panel   | \$125   |
| ELECTRONIC LOCKING W/3.55 AXLE RATIO  |         |
|   | \$390   |

- Securilock Anti-Theft Ignition (pats) Engine Immobilizer- Systems Monitor
- Underhood And Pickup Cargo Box Lights- Universal Garage Door Opener
- Urethane Gear Shifter Material

## Exterior

- Manual Tailgate/Rear Door Lock
- Tires: LT275/65Rx20E OWL A/T (4) -inc: 1 LT275/70Rx18E BSW A/T spare tire
- Auto On/Off Aero-Composite Halogen Headlamps w/Delay-Off
- Black Side Windows Trim and Black Front Windshield Trim
- Cargo Lamp w/High Mount Stop Light- Clearcoat Paint- Deep Tinted Glass
- Front Bumper w/2 Tow Hooks- Front Fog Lamps- Front License Plate Bracket
- Full-Size Spare Tire Stored Underbody w/Crankdown- Fully Galvanized Steel Panels
- Perimeter/Approach Lights- Power Rear Window w/Defroster- Regular Box Style
- Steel Spare Wheel- Step Bumper- Tailgate Rear Cargo Access- Tailgate Step & Handle
- Variable Intermittent Wipers
- Wheels: 20" Platinum Cast Aluminum -inc: black painted pockets

## Safety

- 10-Way Power Driver Seat -inc: Power Recline, Height Adjustment, Fore/Aft Movement, Cushion Tilt and Power 2-Way Lumbar Support
- 10-Way Power Passenger Seat -inc: Power Recline, Height Adjustment, Fore/Aft Movement, Cushion Tilt and Power 2-Way Lumbar Support
- Driver And Passenger Visor Vanity Mirrors w/Driver And Passenger Illumination
- Front Seats w/Power 2-Way Driver Lumbar
- Gauges -inc: Speedometer, Odometer, Oil Pressure, Engine Coolant Temp, Tachometer, Inclinator, Transmission Fluid Temp, Engine Hour Meter, Trip Odometer and Trip Computer
- Power 1st Row Windows w/Driver And Passenger 1-Touch Up/Down
- Power Door Locks w/Autolock Feature- Power Rear Windows
- Premium Leather Seating Surfaces 40/Console/40 -inc: 10-way power driver and passenger seating, easy entry/exit memory feature, 4-way adjustable driver/passenger headrests, matching 60/40 rear bench w/partitioned locking under-seat storage, 12V powerpoint and 110v/150w inverter outlet in rear console
- Remote Keyless Entry w/Integrated Key Transmitter, Illuminated Entry and Panic Button
- Trip Computer- 2 Seatback Storage Pockets- 5 12V DC Power Outlets
- 60-40 Folding Split-Bench Front Facing FlexFold Flip Forward Cushion/Seatback Rear Seat
- Analog Appearance- Cruise Control w/Steering Wheel Controls
- Day-Night Auto-Dimming Rearview Mirror- Delayed Accessory Power
- Dual Zone Front Automatic Air Conditioning- Fade-To-Off Interior Lighting
- Front And Rear Map Lights- Front Cupholder
- Full Carpet Floor Covering -inc: Carpet Front And Rear Floor Mats - Full Cloth Headliner
- Full Floor Console w/Locking Storage and 5 12V DC Power Outlets - Glove Box
- HVAC -inc: Underseat Ducts and Console Ducts
- Instrument Panel Bin, Covered Dashboard Storage, Driver / Passenger And Rear Door Bins and Locking 2nd Row Underseat Storage
- Interior Trim -inc: Chrome/Metal-Look Interior Accents - Keypad
- Manual Adjustable Rear Head Restraints- Manual Tilt/Telescoping Steering Column
- Outside Temp Gauge- Perimeter Alarm- Rear Cupholder- Remote Start System
- Securilock Anti-Theft Ignition (pats) Engine Immobilizer- Systems Monitor
- Underhood And Pickup Cargo Box Lights- Universal Garage Door Opener
- Urethane Gear Shifter Material

## Mechanical

- Engine: 6.2L 2-Valve SOHC EFI NA V8 Flex-Fuel
- Transmission: TorqShift 6-Speed Automatic O/D -inc: SelectShift - 3.73 Axle Ratio
- 3250# Maximum Payload- 35 Gal. Fuel Tank
- 4-Wheel Disc Brakes w/4-Wheel ABS, Front And Rear Vented Discs, Brake Assist and Hill Hold Control
- 72-Amp/Hr 650CCA Maintenance-Free Battery w/Run Down Protection
- Auto Locking Hubs
- Class V Towing Equipment -inc: Hitch, Brake Controller and Trailer Sway Control
- Electronic Transfer Case- Extra Heavy-Duty 200-Amp Alternator- Firm Suspension
- Front Anti-Roll Bar- Front Suspension w/Coil Springs
- GVWR: 10,000 lb Payload Package- HD Shock Absorbers
- Hydraulic Power-Assist Steering- Leaf Rear Suspension w/Leaf Springs
- Part-Time Four-Wheel Drive- Single Stainless Steel Exhaust- Trailer Wiring Harness
- Transmission w/Oil Cooler

## PLATINUM PACKAGE

-inc: satin chrome tailgate applique, Platinum raised chrome lettering on boxside, chrome bed tie downs (replaced w/black tie hooks when ordered w/85S ToughBed Spray-In Bedliner) and 2 front chrome tow hooks, Bright Chrome Door & Tailgate Handles, body-color surround, Chrome Skull Caps on PowerScope Mirrors, PowerScope Trailer-Tow Mirrors, power telescoping, power folding w/power heated glass, memory, heated convex spotter mirror and integrated clearance lights/turn signals, Door Trim, soft armrest/grab handle, upper applique, upper and lower map pockets and reflector, Memory Power Adjustable Pedals, Unique Satin Chrome Grille, bright chrome c-clamps, 6" Angular Chrome Step Bars, Body-Color Front & Rear Bumpers, Premium Leather-Wrapped/Wood Steering Wheel, Heated w/audio controls, Chrome Exhaust Tip

## RUBY RED METALLIC TINTED CLEARCOAT

\$395

## BLACK, UNIQUE PLATINUM LEATHER 40/CONSOLE/40 SEATS

-inc: 10 way power driver and passenger seating, 4 way adjustable driver/passenger headrests, 2nd row armrest, front heated/cooled, memory and easy entry/exit, Console

## Option Packages Total

\$10,890

---

Texas Vehicle Exchange

[tveauto.com](https://tveauto.com)

972-242-5350

1724 Luna Road

Carrollton, TX 75006

© 2024 AutoRevo - All rights reserved. - Powered by [AutoRevo](#)