

2021 FORD F450 DRW DIESEL 4X4 PLATINUM LIKE NEW MUST SEE LOW MILES 26" FORGIATOS

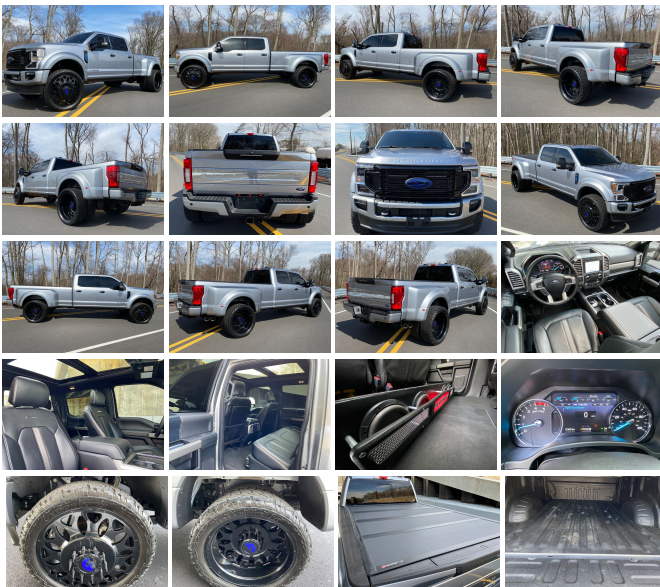
View this car on our website at njtruckking.com/7068474/ebrochure



Our Price **\$124,900**

Specifications:

Year:	2021
VIN:	1FT8W4DT0MEC04075
Make:	FORD F450 DRW DIESEL
Model/Trim:	4X4 PLATINUM LIKE NEW MUST SEE LOW MILES 26" FORGIATOS
Condition:	Pre-Owned
Body:	Pickup Truck
Exterior:	Silver
Engine:	ENGINE: 6.7L 4V OHV POWER STROKE V8 TURBO DIESEL B20
Interior:	Black Leather
Mileage:	10,380
Drivetrain:	4 Wheel Drive



2021 FORD F450 4X4 CREW DRW
~PLATINUM~
6.7L POWERSTROKE TURBO DIESEL
AUTOMATIC TRANSMISSION
(ONLY 10,380 ORIGINAL / ACTUAL MILES)
LOADED UP WITH ALL OPTIONS
LEVELED
26" FORGIATO FORGED WHEELS
37" TIRES
SOME PAINT MATCH
CUSTOM EMBLEMS
BED LINER
POWER STEPS
TINTED
Tonneau Cover
Stereo System
RUNS AND DRIVES LIKE NEW!
STRAIGHT KILLER!
DONT MISS IT!

BUY IT NOW
\$124,900
CALL / TEXT ROB 856-381-6621 WITH ANY QUESTIONS

Our Location :



2021 FORD F450 DRW DIESEL 4X4 PLATINUM LIKE NEW MUST SEE LOW MILES 26" FORGIATOS
King of Cars and Trucks - 856-693-3181 - View this car on our website at njtruckking.com/7068474/ebrochure

Installed Options

Interior

- FOB Controls -inc: Cargo Access and Remote Engine Start
- Flow-Through Console -inc: 110V/400W outlet in rear
- Full Carpet Floor Covering -inc: Carpet Front And Rear Floor Mats
- Gauges -inc: Speedometer, Odometer, Engine Coolant Temp, Tachometer, Inclinator, Turbo/Supercharger Boost, Transmission Fluid Temp, Engine Hour Meter, Trip Odometer and Trip Computer
- Interior Trim -inc: Metal-Look Instrument Panel Insert, Genuine Wood/Chrome Door Panel Insert and Chrome/Metal-Look Interior Accents
- Memory Settings -inc: Door Mirrors, Steering Wheel and Pedals
- Power 1st Row Windows w/Driver And Passenger 1-Touch Up/Down
- Power Door Locks w/Autolock Feature- Power Rear Windows
- Proximity Key For Doors And Push Button Start
- Remote Keyless Entry w/Integrated Key Transmitter, Illuminated Entry and Panic Button
- Seats w/Leatherette Back Material- Smart Device Remote Engine Start- Trip Computer
- Unique Platinum Leather 40/Console/40 Seats -inc: multi-contour, heated/ventilated, 10-way power driver and 8-way power front passenger seats (includes power lumbar), memory, 4-way adjustable driver and passenger headrests
- 110V/400W Outlet -inc: 1 in-dash mounted outlet - 2 Seatback Storage Pockets
- 8-Way Driver Seat- Air Filtration- Cruise Control w/Steering Wheel Controls
- Day-Night Auto-Dimming Rearview Mirror- Delayed Accessory Power
- Digital/Analog Appearance- Distance Pacing w/Traffic Stop-Go
- Driver And Passenger Visor Vanity Mirrors w/Driver And Passenger Illumination
- Fade-To-Off Interior Lighting- FordPass Connect 4G Mobile Hotspot Internet Access
- Front And Rear Map Lights- Front Cupholder- Front Facing Fold-Up Cushion Rear Seat
- Full Cloth Headliner- Full Overhead Console w/Storage- Garage Door Transmitter
- HVAC -inc: Underseat Ducts- Heated Leather Steering Wheel
- Illuminated Locking Glove Box
- Instrument Panel Covered Bin, Dashboard Storage, Driver / Passenger And Rear Door Bins
- Integrated Navigation System w/Voice Activation- Keypad- Leather Door Trim Insert
- Manual Adjustable Driver And Passenger Seats- Outside Temperature Gauge- Reverse Seat

Option Packages

Factory Installed Packages

ENGINE: 6.7L 4V OHV POWER STROKE V8 TURBO DIESEL B20
-inc: manual push-button engine-exhaust braking
and intelligent oil-life monitor

- Manual Adjustable Rear Head Restraints- Outside Temp Gauge- Passenger Seat
- Perimeter Alarm- Power Adjustable Pedals- Power Tilt/Telescoping Steering Column
- Rear Cupholder- Securilock Anti-Theft Ignition (pats) Engine Immobilizer
- Systems Monitor- Underhood And Pickup Cargo Box Lights
- Urethane Gear Shifter Material
- Voice Activated Dual Zone Front Automatic Air Conditioning w/Steering Wheel Controls

Exterior

- Autolamp Auto On/Off Aero-Composite Led Low/High Beam Auto High-Beam Daytime Running Lights Preference Setting Headlamps w/Delay-Off
- Tailgate/Rear Door Lock Included w/Power Door Locks
- Tires: 225/70Rx19.5G BSW Traction -inc: Spare may not be the same as road tire
- Aluminum Grille- Aluminum Panels
- Black Side Windows Trim and Black Front Windshield Trim
- Body-Colored Front Bumper w/Body-Colored Rub Strip/Fascia Accent and 2 Tow Hooks
- Body-Colored Rear Step Bumper- Cab Clearance Lights
- Cargo Lamp w/High Mount Stop Light- Chrome Door Handles
- Chrome Power Heated Side Mirrors w/Convex Spotter, Power Folding and Turn Signal Indicator
- Clearcoat Paint- Deep Tinted Glass- Front Fog Lamps
- Full-Size Spare Tire Stored Underbody w/Crankdown- Headlights-Automatic Highbeams
- LED Brakelights- Perimeter/Approach Lights- Power Extendable Trailer Style Mirrors
- Power Rear Window w/Defroster- Power Running Boards
- Rain Detecting Variable Intermittent Wipers- Regular Box Style- Retractable Rear Step
- Steel Spare Wheel- Tailgate Rear Cargo Access
- Wheels: 19.5" Forged Polished Aluminum -inc: 4 aluminum outer and 2 steel inner, bright hub covers/center ornaments

Safety

- FOB Controls -inc: Cargo Access and Remote Engine Start
- Flow-Through Console -inc: 110V/400W outlet in rear
- Full Carpet Floor Covering -inc: Carpet Front And Rear Floor Mats
- Gauges -inc: Speedometer, Odometer, Engine Coolant Temp, Tachometer, Inclinator, Turbo/Supercharger Boost, Transmission Fluid Temp, Engine Hour Meter, Trip Odometer and Trip Computer
- Interior Trim -inc: Metal-Look Instrument Panel Insert, Genuine Wood/Chrome Door Panel Insert and Chrome/Metal-Look Interior Accents
- Memory Settings -inc: Door Mirrors, Steering Wheel and Pedals
- Power 1st Row Windows w/Driver And Passenger 1-Touch Up/Down
- Power Door Locks w/Autolock Feature- Power Rear Windows
- Proximity Key For Doors And Push Button Start
- Remote Keyless Entry w/Integrated Key Transmitter, Illuminated Entry and Panic Button
- Seats w/Leatherette Back Material- Smart Device Remote Engine Start- Trip Computer
- Unique Platinum Leather 40/Console/40 Seats -inc: multi-contour, heated/ventilated, 10-way power driver and 8-way power front passenger seats (includes power lumbar), memory, 4-way adjustable driver and passenger headrests
- 110V/400W Outlet -inc: 1 in-dash mounted outlet - 2 Seatback Storage Pockets
- 8-Way Driver Seat- Air Filtration- Cruise Control w/Steering Wheel Controls
- Day-Night Auto-Dimming Rearview Mirror- Delayed Accessory Power
- Digital/Analog Appearance- Distance Pacing w/Traffic Stop-Go
- Driver And Passenger Visor Vanity Mirrors w/Driver And Passenger Illumination
- Fade-To-Off Interior Lighting- FordPass Connect 4G Mobile Hotspot Internet Access
- Front And Rear Map Lights- Front Cupholder- Front Facing Fold-Up Cushion Rear Seat
- Full Cloth Headliner- Full Overhead Console w/Storage- Garage Door Transmitter
- HVAC -inc: Underseat Ducts- Heated Leather Steering Wheel
- Illuminated Locking Glove Box
- Instrument Panel Covered Bin, Dashboard Storage, Driver / Passenger And Rear Door Bins
- Integrated Navigation System w/Voice Activation- Keypad- Leather Door Trim Insert
- Manual Adjustable Rear Head Restraints- Outside Temp Gauge- Passenger Seat
- Perimeter Alarm- Power Adjustable Pedals- Power Tilt/Telescoping Steering Column
- Rear Cupholder- Securilock Anti-Theft Ignition (pats) Engine Immobilizer
- Systems Monitor- Underhood And Pickup Cargo Box Lights
- Urethane Gear Shifter Material
- Voice Activated Dual Zone Front Automatic Air Conditioning w/Steering Wheel Controls

Mechanical

- Class V Towing Equipment -inc: Hitch, Brake Controller and Trailer Sway Control
- Transmission: TorqShift 10-Speed Automatic -inc: SelectShift and selectable drive modes: normal, tow/haul, eco, deep sand/snow and slippery
- 4-Wheel Disc Brakes w/4-Wheel ABS, Front And Rear Vented Discs, Brake Assist and Hill Hold Control
- 48 Gal. Fuel Tank- 50-State Emissions System- 5320# Maximum Payload

- 78-Amp/Hr 750CCA Maintenance-Free Battery w/Run Down Protection
- Auto Locking Hubs- Dual Rear Wheels- Electronic Transfer Case
- Engine: 6.7L 4V OHV Power Stroke V8 Turbo Diesel B20 -inc: manual push-button engine-exhaust braking and intelligent oil-life monitor
- Firm Suspension- Front And Rear Anti-Roll Bars- Front Suspension w/Coil Springs
- GVWR: 14,000 lb Payload Package- HD 220 Amp Alternator- HD Shock Absorbers
- Hydraulic Power-Assist Speed-Sensing Steering- Leaf Rear Suspension w/Leaf Springs
- Limited Slip w/4.30 Axle Ratio- Part-Time Four-Wheel Drive
- Single Stainless Steel Exhaust w/Chrome Tailpipe Finisher- Trailer Wiring Harness

King of Cars and Trucks

njtruckking.com

856-693-3181

1229 Broadway

Westville, New Jersey 08093

© 2024 AutoRevo - All rights reserved. - Powered by [AutoRevo](#)