

3075 Leon Rd
Jacksonville , FL 32246

2006 Jeep Wrangler Sport

Nolan Hill

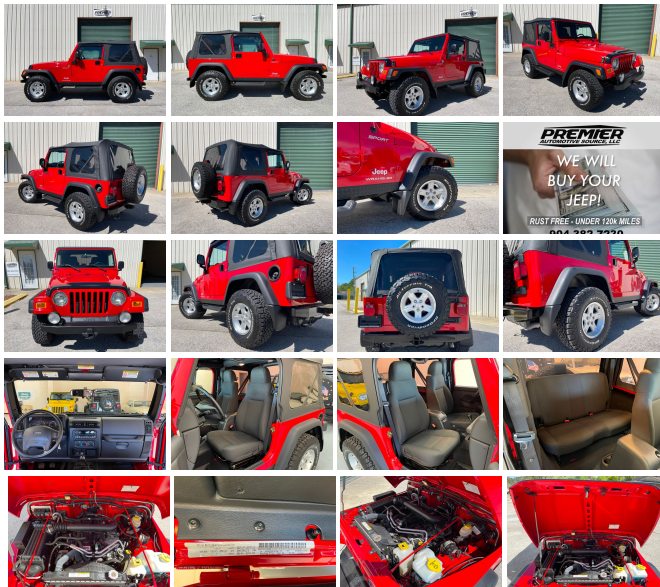
View this car on our website at premierautomotivesource.com/7068457/ebrochure



Our Price **\$0**

Specifications:

| | |
|---------------|----------------------------------|
| Year: | 2006 |
| VIN: | 1J4FA49S26P787496 |
| Make: | Jeep |
| Model/Trim: | Wrangler Sport |
| Condition: | Pre-Owned |
| Body: | SUV |
| Exterior: | Flame Red |
| Engine: | 4.0L SMPI I6 "POWER TECH" ENGINE |
| Interior: | Dark Slate Gray Cloth |
| Transmission: | 6-SPEED MANUAL TRANSMISSION |
| Mileage: | 4,820 |
| Drivetrain: | 4 Wheel Drive |
| Economy: | City 14 / Highway 18 |



2006 JEEP WRANGLER TJ

- LAST YEAR OF THE TJ -
- LESS THAN 5,000 MILES -
- LEGENDARY 4.0 INLINE 6 ENGINE -
- 6 SPEED TRANSMISSION -
- FACTORY 3.73 GEARS -
- 31X10.50X15 BFG K02 A/T TIRES -
- SOFT TOP -
- COLD A/C -
- TRADES WELCOME -
- WE SELL & SHIP WORLDWIDE -

CALL OR TEXT NOLAN @ 904-382-7230

- LIVE WALK AROUND VIDEO AVAILABLE -

2006 TJ Jeep Wrangler Sport, Flame red with dark slate gray interior, soft top, very low miles. 4.0 inline 6 Engine and 6 speed manual transmission. Tow hooks, fog lights, side steps, optional Dana 44 rear axle with 3.73 gears, cruise control, and cold A/C. The legendary 4.0L inline six cylinder runs great, recent oil service. The Carfax reports no accidents, or issues. This amazing low mileage Wrangler is very clean inside and out. It runs, drives, and looks great. Sold with 2 keys, front mats, and owners manual.

For financing we recommend LightStream they offer low-interest financing to people with good credit. LightStream has an easy online application process, and provides a quick response during business hours. This is a confidential process between you and LightStream. For more information or to apply:

<http://lightstream.com/?fact=14755&irad=391622&irmp=3040226>

(Please note, we may receive a referral fee from LightStream through this link.)

Call or Text Nolan 904-382-7230. ALL INVENTORY IS STORED INDOORS AND SHOWN BY APPOINTMENT. Trades accepted. Extended warranties available. All applicable sales tax, title, registration and a \$299 document fees apply.

Our Location :



2006 Jeep Wrangler Sport

Premier Automotive Source LLC - - View this car on our website at premierautomotivesource.com/7068457/ebrochure

Installed Options

Interior

- Cloth reclining high-back front bucket seats - Front floor mats- (7) speakers w/subwoofer
- AM/FM stereo w/CD player-inc: changer control- Air conditioning- Aux 12-volt pwr outlet
- Cargo tie down loops- Courtesy/underhood lamps- Easy access tip/slide driver seat
- Easy access tip/slide passenger seat- Fixed long mast antenna- Folding rear seat
- Front/rear seat, wheelhouse, cargo area carpeting- Full length floor console
- Glove box w/lock- Sport bar w/full padding- Tilt steering column

Exterior

- Bumper extensions- Deep tint sunscreen glass- Easy folding soft top- Fender flares
- Fog lamps- Fold away mirrors- Front door light tinted windows
- Variable intermittent windshield wipers

Safety

- Cloth reclining high-back front bucket seats - Front floor mats- (7) speakers w/subwoofer
- AM/FM stereo w/CD player-inc: changer control- Air conditioning- Aux 12-volt pwr outlet
- Cargo tie down loops- Courtesy/underhood lamps- Easy access tip/slide driver seat
- Easy access tip/slide passenger seat- Fixed long mast antenna- Folding rear seat
- Front/rear seat, wheelhouse, cargo area carpeting- Full length floor console
- Glove box w/lock- Sport bar w/full padding- Tilt steering column

Mechanical

- (5) 15" x 7.0" full-face steel wheels - P225/75R15 all-terrain OWL "Wrangler" tires
- (2) front/(1) rear tow hooks- 117-amp alternator- 19 gallon fuel tank- 3.07 axle ratio
- 4.0L SMPI I6 "Power Tech" engine - 4450# GVWR- 6-speed manual transmission
- 600-CCA maintenance free battery- Command-Trac part-time 4WD system
- Dana 30/186MM front axle- Dana M35/194MM rear axle- Front stabilizer bar
- Full size spare tire w/outside carrier- Gas-charged shock absorbers
- Next generation engine controller- Pwr front disc/rear drum brakes
- Pwr recirculating ball steering- Skid plates-inc: transfer case, fuel tank

Option Packages

Factory Installed Packages

4.0L SMPI I6 "POWER TECH" ENGINE

6-SPEED MANUAL TRANSMISSION

AM/FM STEREO W/6-DISC CD CHANGER
\$300

BODY-SIDE STEPS
\$150

DANA 44/226MM HD REAR AXLE
-inc: 3.73 axle ratio
\$310

SPEED CONTROL
-inc: leather wrapped steering wheel
\$300

3.73 AXLE RATIO

EASY-FOLDING SOFT TOP

Option Packages Total
\$1,060

DEALER POLICIES: Please review all photos carefully and ask questions prior to making an offer if there is anything you are not sure about. We welcome pre-sale inspections. Any descriptions we make of vehicles shall not be construed as any type of warranty. Our pictures are as thorough and precise as we can make them. Please be advised that this is not a brand new vehicle. It is a pre-owned vehicle and has previously been driven, so therefore with respect to the miles there will most likely be average wear and tear, such as minor scratches, minor dings, or small rock chips. We do our best to disclose any substantial blemishes in our photos and descriptions. If our vehicles include manuals, service records or extra sets of keys, it will be shown in the pictures and noted in the description. The advertised mileage is a round number and may vary slightly from the exact mileage due to demo and test drives. Once a vehicle leaves our premises, no refunds, credits, or adjustments, will be issued. All Vehicles are conveyed AS-IS. Dealer neither makes nor implies any warranty on this or any vehicle. Any dispute that may arise shall take place under the laws of the state of Florida, in the state of Florida and all sales are subject to binding Arbitration under the rules of the American Arbitration Association. All applicable sales tax, tag and title fees apply. When we receive a vehicle into our inventory, sometimes the title is being held by a bank or lender as collateral for the previous loan or payoff. Occasionally there is a delay in receiving the title from these lending institutions after payoff of the loan for up to two weeks. While we usually have the titles in our possession, there are instances where we may be waiting for the title to arrive. We guarantee clean titles on our vehicles unless otherwise noted. In some cases we may hold titles until cashiers checks or other funds are cleared or unless other arrangements were agreed upon. Titles will be sent via Fedex for proper tracking. Thank you for your patience and understanding.

Premier Automotive Source LLC

premierautomotivesource.com

3075 Leon Rd

Jacksonville , FL 32246

© 2024 AutoRevo - All rights reserved. - [Powered by AutoRevo](#)