

2007 Chevrolet Colorado LT w/2LT

View this car on our website at paniaguaautos.com/7067857/ebrochure

paniaguaautos.com
(706)529-1919

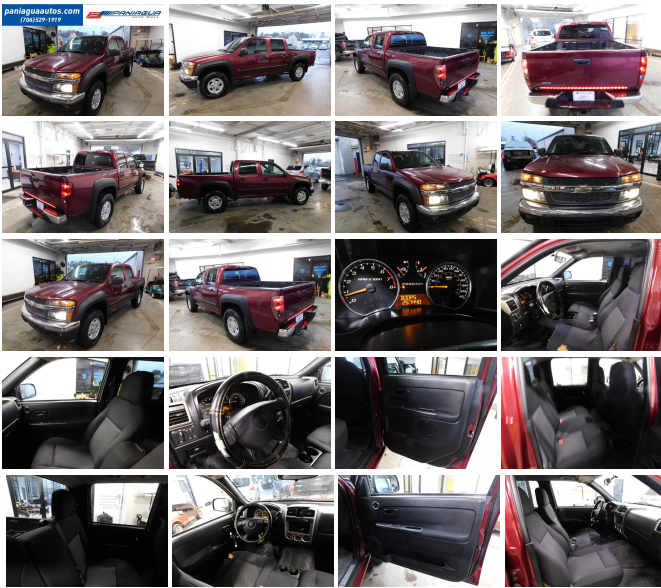


Our Price **\$4,900**

Specifications:

Year:	2007
VIN:	1GCDS13E378172821
Make:	Chevrolet
Stock:	7163
Model/Trim:	Colorado LT w/2LT
Condition:	Pre-Owned
Body:	Pickup Truck
Exterior:	Burgundy
Engine:	ENGINE, 3.7L DOHC 5-CYLINDER MFI
Interior:	Black Cloth
Transmission:	AUTOMATIC
Mileage:	257,440
Drivetrain:	Rear Wheel Drive
Economy:	City 17 / Highway 23

2007 CHEVROLET COLORADO LT 3.7L 5 CYLINDER AUTOMATIC
NICE CLEAN CLOTH INTERIOR ALL POWER HURRY IN TODAY
AND CHECK OUT OUR MOST RECENT INVENTORY 6 months
warranty or 6000 miles on transmission call 706-280-1520



2007 Chevrolet Colorado LT w/2LT

Paniagua Auto Mall - 706-529-1919& 423-472-4045 - View this car on our website at paniaguaautos.com/7067857/ebrochure

Our Location :



2007 Chevrolet Colorado LT w/2LT
Paniagua Auto Mall - 706-529-1919& 423-472-4045 - View this car on our website at paniaguaautos.com/7067857/ebrochure

Installed Options

Interior

- Audio system, AM/FM stereo with CD/MP3 player, seek-and-scan, digital clock, auto-tone control, Radio Data System (RDS), automatic volume and TheftLock (Includes 6 speakers. Upgradeable to (UC6) AM/FM Stereo with 6-disc in-dash CD changer or (PDB) Sun and Sound Package)
- Floor mats, rubberized-vinyl front, requires (B30) color-keyed carpeting (Upgradeable to (BKE) Regular Production Accessory, molded carpeted floor mats)
- Power Convenience Package with power windows, power door locks with lockout protection, outside power-adjustable mirrors and Remote Keyless Entry
- Seats, front bucket with LT Deluxe Cloth, includes manual recliners, integral outboard head restraints, center floor console with storage and armrest (Upgradeable to (AM6) front 60/40 split-bench seats with LT Deluxe Cloth as a no credit option with (Z85) Standard Suspension Package or (Z71) Off-Road Suspension Package)
- Accents, interior, Nova Silver air outlets, center control stack and door handle bezels
- Air conditioning, single-zone manual- Assist handle, front passenger and rear outboard
- Coat hooks, driver- and passenger-side rear - Cruise control
- Door trim, integral armrests and driver- and front passenger-side map pockets with cloth inserts
- Floor covering, color-keyed carpeting
- Instrumentation, analog with speedometer, odometer with trip odometer, fuel level, engine temperature, tachometer and Driver Information Center
- LT Decor Mirror, inside rearview manual day/night with dual reading lights
- Power outlets, 2 auxiliary with covers, 12-volt
- Seats, second row 60/40 split-bench, flat-folding - Steering column, Tilt-Wheel
- Steering wheel, leather-wrapped- Theft-deterrent system, vehicle, PASSLock
- Tire Pressure Monitor
- Visors, driver and front passenger, padded with cloth, includes front passenger vanity mirror
- Warning tones, headlamp on, key-in-ignition, driver safety belt unfasten, turn signal on and critical Driver Information Center active

Exterior

Paint Protection Film, with automatic exterior lamp control

Option Packages

Factory Installed Packages

ENGINE, 3.7L DOHC 5-CYLINDER MFI
(242 hp [180.4 kW] @ 5600 rpm), 242 lb-ft [326.7 Nm] @ 4600 rpm

LT PREFERRED EQUIPMENT GROUP
Includes Standard Equipment \$2,860

Option Packages Total \$2,860

- Daytime Running Lamps, with automatic exterior lamp control
- Mirrors, outside power-adjustable, manual-folding
- Air dam, Ebony (Not included with (ZQ8) Sport Suspension Package.)
- Bumpers, front and rear chrome with a Dark Smoke Gray pad on the rear step-style bumper (Not available with (ZQ8) Sport Suspension Package)
- Fascia, front Dark Smoke Gray
- Glass, Solar-Ray deep tinted (all windows except light tinted glass on windshield, driver- and front passenger-side glass)
- Grille, color-keyed surround with Dark Smoke Gray mesh, chrome bar and composite headlamps (Standard with (Z85) Standard Suspension Package)
- Moldings, Dark Smoke Gray bodyside (Included with (Z85) Standard Suspension Package. Must specify if desired with (Z71) Off-Road Suspension Package. Not available with (ZQ8) Sport Suspension Package)
- Tailgate, 2-position, locking- Wipers, front intermittent with washers

Safety

- Audio system, AM/FM stereo with CD/MP3 player, seek-and-scan, digital clock, auto-tone control, Radio Data System (RDS), automatic volume and TheftLock (Includes 6 speakers. Upgradeable to (UC6) AM/FM Stereo with 6-disc in-dash CD changer or (PDB) Sun and Sound Package)
- Floor mats, rubberized-vinyl front, requires (B30) color-keyed carpeting (Upgradeable to (BKE) Regular Production Accessory, molded carpeted floor mats)
- Power Convenience Package with power windows, power door locks with lockout protection, outside power-adjustable mirrors and Remote Keyless Entry
- Seats, front bucket with LT Deluxe Cloth, includes manual recliners, integral outboard head restraints, center floor console with storage and armrest (Upgradeable to (AM6) front 60/40 split-bench seats with LT Deluxe Cloth as a no credit option with (Z85) Standard Suspension Package or (Z71) Off-Road Suspension Package)
- Accents, interior, Nova Silver air outlets, center control stack and door handle bezels
- Air conditioning, single-zone manual- Assist handle, front passenger and rear outboard
- Coat hooks, driver- and passenger-side rear - Cruise control
- Door trim, integral armrests and driver- and front passenger-side map pockets with cloth inserts
- Floor covering, color-keyed carpeting
- Instrumentation, analog with speedometer, odometer with trip odometer, fuel level, engine temperature, tachometer and Driver Information Center
- LT Decor- Mirror, inside rearview manual day/night with dual reading lights
- Power outlets, 2 auxiliary with covers, 12-volt
- Seats, second row 60/40 split-bench, flat-folding - Steering column, Tilt-Wheel
- Steering wheel, leather-wrapped- Theft-deterrent system, vehicle, PASSLock
- Tire Pressure Monitor
- Visors, driver and front passenger, padded with cloth, includes front passenger vanity mirror
- Warning tones, headlamp on, key-in-ignition, driver safety belt unfasten, turn signal on and critical Driver Information Center active

Mechanical

- Brakes, 4-wheel antilock, front disc/rear drum
- Tire, compact spare, located at rear underbody of vehicle (Not available with (Z71) Off-Road Suspension Package or (ZQ8) Sport Suspension Package. Upgradeable to appropriate full size spare tire.)
- Tires, P225/75R15 all-season, blackwall (2WD models only. Requires (Z85) Standard Suspension Package and includes (PF3) 4 - 15" x 6.5" (38.1 cm x 16.5 cm) aluminum wheels)
- Transmission, 4-speed automatic, electronically controlled with overdrive (Refer to the Engine and Axle section for compatibility requirements. Must specify)
- Wheels, 4 - 15" x 6.5" (38.1 cm x 16.5 cm) aluminum (Requires (Z85) Standard Suspension Package. Upgradeable to (N83) 4 - 15" x 7" chrome finish styled aluminum wheels)
- Alternator, 125 amps
- Battery, heavy-duty 690 cold-cranking amps, maintenance-free with rundown protection
- Engine, 3.7L DOHC 5-cylinder MFI (242 hp [180.4 kW] @ 5600 rpm), 242 lb-ft [326.7 Nm] @ 4600 rpm) (Refer to the Engine and Axle section for compatibility requirements. Must specify.)
- GVWR, 5000 lbs. (2268 kg) (Standard on CS15643 model and (Z85) Standard Suspension Package. Refer to the Engine and Axle section for compatibility requirements)
- Pickup box, Fleetside, all-welded steel with double wall construction and and corrosion protection with 6 cargo tie-downs, tailgate, locking, 2-position
- Rear axle, 3.73 ratio (Refer to the Engine and Axle section for compatibility requirements. Must specify)
- Rear wheel drive- Steering, power, rack-and-pinion
- Suspension Package, Standard (Upgradeable to (Z71) Off-Road Suspension Package or (ZQ8) Sport Suspension Package)
- Suspension, front independent with coil springs (Included on 2WD models with (Z85) Standard Suspension Package)
- Suspension, rear semi-floating axle with 2-stage multi-leaf springs

Paniagua Auto Mall

paniaguaautos.com

706-529-1919 & 423-472-4045

1776 E. Walnut Ave

Dalton, Georgia 30721

© 2024 AutoRevo - All rights reserved. - Powered by AutoRevo