

2008 Chevrolet Silverado 2500HD 4x4 Work Truck

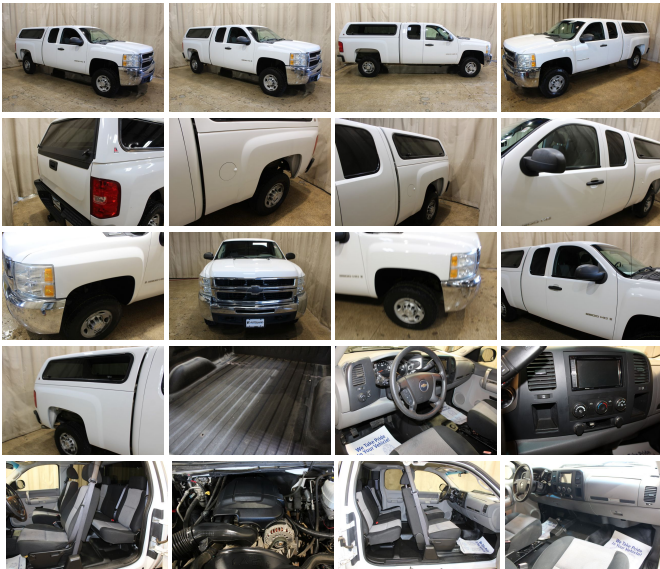
View this car on our website at autolandoutlets.com/7066761/ebrochure



Our Price **\$23,742**

Specifications:

Year:	2008
VIN:	1GCHK29K28E209476
Make:	Chevrolet
Stock:	11000
Model/Trim:	Silverado 2500HD 4x4 Work Truck
Condition:	Pre-Owned
Body:	Pickup Truck
Exterior:	Summit White
Engine:	ENGINE, VORTEC 6.0L VARIABLE VALVE TIMING V8 SFI
Interior:	Black Cloth
Transmission:	TRANSMISSION, 6-SPEED AUTOMATIC, HEAVY-DUTY, ELECTRONICALLY CONTROLLED
Mileage:	139,008
Drivetrain:	4 Wheel Drive



Just arrived!! Vehicle has been inspected runs and drives great!! Autoland Outlets is proud to offer this 2008 Chevrolet Silverado Ext.Cab 4x4 options include 3.73 Rear Ratio,Cloth Seats,Heavy Duty Trailering Package,Remote Start the list goes on and on call

Many of our trucks are Rust Free Southern Units!!! We Buy-Sell-Trade call us for Availability and Pricing 815-525-5000.Dealer Shall in no way be held liable for any errors or omissions to be found on these webpages. All prices are plus any applicable state taxes and service fees. We will do our best to keep all the information current and accurate,however the dealership should be contacted for final pricing and availability. Autoland Outlets is the midwest Premier Truck Store. Over 250 Trucks in Stock!! Over 150 are Diesels! 3/4 Tons, 1 Tons, Regular, Extended and Crew Cabs. Plus: Dump Trucks, Utility Trucks, and much more! Many New Trucks Arriving Daily!!! Thousands of Satisfied Customers! Over 25 Years in Business. Updated Daily 888-240-8674 ILLINOIS WARRANTY MAY APPLY CALL DEALERSHIP

Autoland Outlets - 877-319-6060 - View this car on our website at autolandoutlets.com/7066761/ebrochure

Our Location :



Autoland Outlets - 877-319-6060 - View this car on our website at autolandoutlets.com/7066761/ebrochure

Installed Options

Interior

- Dark Titanium, Vinyl seat trim (Vinyl seats require (BG9) Graphite-colored rubberized vinyl floor covering)
 - Power outlets, 2 auxiliary instrument panel-mounted with covers, 12-volt
- Tire Pressure Monitoring System (does not apply to spare tire)*

Option Packages

Factory Installed Packages

ENGINE, VORTEC 6.0L VARIABLE VALVE TIMING V8 SFI
(353 hp [262.8 kW] @ 5400 rpm, 373 lb-ft of

- Tire Pressure Monitoring System (does not apply to spare tire)
- Air conditioning, single-zone manual front climate control (Standard on Extended and Crew Cab models)
- Assist handle, front passenger (Also includes rear assist handles in the headliner on Extended and Crew Cab models)
- Coat hooks, rear driver and passenger side
- Cup holders, front (Also includes rear cupholders on Extended and Crew Cab models)
- Driver Information Center with odometer, trip odometer and message center (monitors numerous systems depending on vehicle equipment level including low fuel, turn signal "on", transmission temperature and oil change notification) (Driver Information Center controls are operated through the trip button unless (UK3) steering wheel mounted audio controls is ordered)
- Floor covering, Black rubberized vinyl
- Instrumentation, analog with speedometer, fuel level, engine temperature, tachometer, voltmeter and oil pressure indicators
- Lighting, interior with dome and reading lights, illuminated entry feature and backlit instrument panel switches
- Mirror, inside rearview manual day/night
- Seat, rear bench (folds up), full width, folding, 3-passenger (includes child seat top tether anchor) (Standard with Extended Cab models only)
- Seats, front 40/20/40 split-bench, 3-passenger, driver and front passenger manual reclining with outboard head restraints and center fold-down armrest with storage
- Steering wheel, includes theft-deterrent locking feature
- Visors, driver and front passenger, sliding with clip and passenger side vanity mirror with cover, Opal Gray-colored
- Warning tones, headlamp on, key-in-ignition, driver and passenger buckle up reminder and turn signal on
- Windows, fixed, rear access door (Standard with Extended Cab models only)

Exterior

- Headlamps, dual halogen composite with automatic exterior lamp control and flash-to-pass feature
- Tires, LT245/75R16E all-season, blackwall (Not available with (Z71) Off-Road Suspension Package. Includes 5 tires with (E63) Fleetside pickup box. Includes 4 tires with (ZW9) pickup box delete.)
- Air dam, Black- Bumper, front chrome, includes chrome bumper end caps
- Bumper, rear chrome, step-style with pad- Door handles, Black
- Glass, Solar-Ray light-tinted, all windows- Grille, chrome surround
- Lamps, dual cargo area lamps- Mirrors, outside manual, Black, manual-folding
- Tire carrier, outside spare, winch-type mounted under frame at rear (Orders with (ZW9) Pickup box delete will not include a Spare Tire Carrier unless a spare tire is ordered)
- Wheels, 16" X 6.5" (40.6 CM X 16.5 CM) 8-lug painted steel includes painted center caps and steel spare (spare wheel will not cosmetically match the other 4 wheels) Spare not included with (ZW9) pickup box delete unless a spare tire is ordered
- Wipers, front intermittent wet-arm with pulse washers

Safety

- Dark Titanium, Vinyl seat trim (Vinyl seats require (BG9) Graphite-colored rubberized vinyl floor covering)
- Power outlets, 2 auxiliary instrument panel-mounted with covers, 12-volt
- Tire Pressure Monitoring System (does not apply to spare tire)
- Air conditioning, single-zone manual front climate control (Standard on Extended and Crew Cab models)
- Assist handle, front passenger (Also includes rear assist handles in the headliner on Extended and Crew Cab models)
- Coat hooks, rear driver and passenger side
- Cup holders, front (Also includes rear cupholders on Extended and Crew Cab models)
- Driver Information Center with odometer, trip odometer and message center (monitors numerous systems depending on vehicle equipment level including low fuel, turn signal "on", transmission temperature and oil change notification) (Driver Information Center controls are operated through the trip button unless (UK3) steering wheel mounted audio controls is ordered)
- Floor covering, Black rubberized vinyl
- Instrumentation, analog with speedometer, fuel level, engine temperature, tachometer, voltmeter and oil pressure indicators
- Lighting, interior with dome and reading lights, illuminated entry feature and backlit instrument panel switches
- Mirror, inside rearview manual day/night
- Seat, rear bench (folds up), full width, folding, 3-passenger (includes child seat top tether anchor) (Standard with Extended Cab models only)
- Seats, front 40/20/40 split-bench, 3-passenger, driver and front passenger manual reclining with outboard head restraints and center fold-down armrest with storage
- Steering wheel, includes theft-deterrent locking feature
- Visors, driver and front passenger, sliding with clip and passenger side vanity mirror with cover, Opal Gray-colored
- Warning tones, headlamp on, key-in-ignition, driver and passenger buckle up reminder and turn signal on
- Windows, fixed, rear access door (Standard with Extended Cab models only)

torque [505.6 N-m] @ 4400 rpm)

**TRANSMISSION, 6-SPEED AUTOMATIC, HEAVY-DUTY,
ELECTRONICALLY CONTROLLED**
with overdrive and tow/haul mode

ALTERNATOR, 160 AMPS
\$75

REMOTE KEYLESS ENTRY
\$240

**SEAT ADJUSTER, MANUAL LUMBAR CONTROL ON THE
DRIVER-SIDE**

SKID PLATE PACKAGE, FRAME-MOUNTED SHIELDS
includes front underbody shield starting behind front bumper and running to first cross-member, protecting front underbody, oil pan, differential case and transfer case
\$150

TRAILERING EQUIPMENT, HEAVY-DUTY
includes trailering hitch platform and 2.5-inch receiver with 2" adapter, 7-wire harness (harness includes wires for: park lamps, backup lamps, right turn, left turn, electric brake lead, battery and ground) with independent fused trailering circuits mated to a 7-way sealed connector, wiring harness for after-market trailer brake controller (located in the instrument panel harness), and single wire for center high-mounted stop lamp
\$230

REAR AXLE, 3.73 RATIO

DIFFERENTIAL, HEAVY-DUTY AUTOMATIC LOCKING REAR
\$325

SUMMIT WHITE

SOLID PAINT

WORK TRUCK PREFERRED EQUIPMENT GROUP
includes standard equipment

AUDIO SYSTEM, AM/FM STEREO
with seek-and-scan and digital clock

DARK TITANIUM, CLOTH SEAT TRIM

**SEATS, FRONT 40/20/40 SPLIT-BENCH, 3-PASSENGER, DRIVER
AND FRONT PASSENGER MANUAL RECLINING**
with outboard head restraints and center fold-down armrest with storage

TIRES, LT245/75R16E ON-/OFF-ROAD, BLACKWALL
(Includes 4 tires and (Z1Z) LT245/75R16 all-season blackwall spare tire with (E63) Fleetside pickup box. Includes 4 tires with (ZW9) pickup box delete.)
\$44

WHEELS, 16" X 6.5" (40.6 CM X 16.5 CM) 8-LUG PAINTED STEEL
includes painted center caps and steel spare

Option Packages Total
\$1,064

Mechanical

- Air cleaner, high-capacity- Alternator, 125 amps
- Battery, heavy-duty 600 cold-cranking amps, maintenance-free with rundown protection and retained accessory power
- Cooling, auxiliary external transmission oil cooler, heavy-duty air-to-oil
- Cooling, external engine oil cooler, heavy-duty air-to-oil, integral to driver side of radiator tank
- Engine, Vortec 6.0L Variable Valve Timing V8 SFI (353 hp [262.8 kW] @ 5400 rpm, 373 lb-ft of torque [505.6 N-m] @ 4400 rpm)
- Exhaust, aluminized stainless-steel muffler and tailpipe- Four wheel drive
- Frame, hydroformed- GVWR, 9200 lbs. (4173 kg)- Pickup box, fleetside
- Rear axle, 3.73 ratio- Recovery hooks, front, frame-mounted
- Steering, power, recirculating ball
- Suspension Package, Handling/Trailer, heavy-duty includes 35mm twin tube shock absorbers and 36mm front stabilizer bar
- Suspension, front independent, torsion bar
- Suspension, rear 2-stage multi-leaf springs, semi-elliptic
- Transfer case, with floor-mounted shifter (Requires 4WD models)
- Transmission, 6-speed automatic, heavy-duty, electronically controlled with overdrive and tow/haul mode (Requires (LY6) Vortec 6.0L V8 SFI engine)

Autoland Outlets

autolandoutlets.com

877-319-6060

13156 Love Rd

Roscoe, IL 61073

© 2024 AutoRevo - All rights reserved. - Powered by AutoRevo