

parksdeals.com  
833-825-2763  
615 NC-66 South  
Kernersville, NC  
27284

Parks Chevrolet,  
Inc.

## 2014 GMC Sierra 1500 SLT

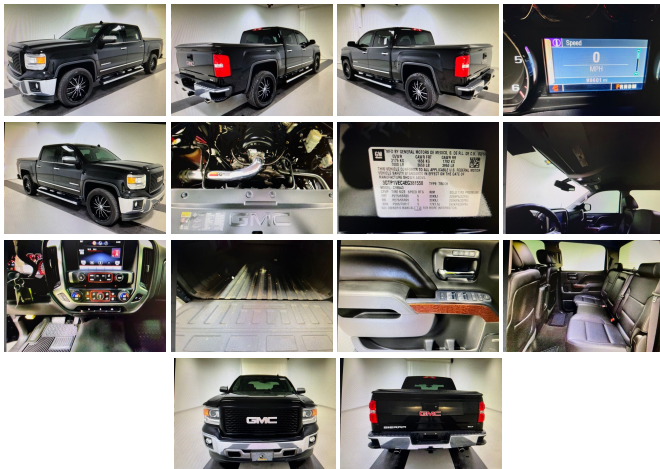
View this car on our website at [parksdeals.com/7065639/ebrochure](http://parksdeals.com/7065639/ebrochure)



Our Price **\$29,503**

## Specifications:

<b>Year:</b>	2014
<b>VIN:</b>	3GTP1VEC4EG381558
<b>Make:</b>	GMC
<b>Stock:</b>	3K6219
<b>Model/Trim:</b>	Sierra 1500 SLT
<b>Condition:</b>	Pre-Owned
<b>Body:</b>	Pickup Truck
<b>Exterior:</b>	Onyx Black
<b>Engine:</b>	ENGINE, 5.3L ECOTEC3 V8 WITH ACTIVE FUEL MANAGEMENT
<b>Interior:</b>	Black Leather
<b>Mileage:</b>	99,602
<b>Drivetrain:</b>	Rear Wheel Drive
<b>Economy:</b>	City 16 / Highway 23



CLEAN CARFAX ONE OWNER!!! 20 INCH ALLOY WHEELS!!!

Parks Chevrolet in Kernersville, NC ! We offer low payment - easy financing on everything ! We sell in volume and that saves you money!!

2014 Onyx Black GMC Sierra 1500 CARFAX One-Owner. Clean CARFAX. CARFAX One-Owner, CARFAX Clean Vehicle History, 6-Speed Automatic Electronic with Overdrive, Black Leather, 110-Volt AC Power Outlet, 150 Amp Alternator, 4.2" Diagonal Color Display Driver Info Center, 6" Rectangular Chromed Tubular Assist Steps, Adjustable pedals, AM/FM radio: SiriusXM, Auto-Dimming Inside Rear-View Mirror, Auxiliary External Transmission Oil Cooler, Bose Speaker System, Chrome Bodyside Moldings, Chrome Door Handles, Chrome Grille Surround, Color-Keyed Carpeting w/Rubberized Vinyl Floor Mats, Deep-Tinted Glass, Driver & Front Passenger Illuminated Vanity Mirrors, Dual-Zone Automatic Climate Control, Electric Rear-Window Defogger, Exterior Parking Camera Rear, EZ Lift & Lower Tailgate, Front Halogen Fog Lamps, Fully automatic headlights, Heavy-Duty Rear Locking Differential, Leather Wrapped Steering Wheel w/Cruise Controls, LED Cargo Box Lighting, Manual Tilt Wheel Steering Column, OnStar 6 Months Directions & Connections Plan, Power Adjustable Pedals, Power driver seat, Power Folding & Adjustable Heated Outside Mirrors, Power Windows w/Driver Express Up, Preferred Equipment Group 4SA, Rear 60/40 Folding Bench Seat (Folds Up), Rear Vision Camera w/Dynamic Guide Lines, Rear Wheelhouse Liners, Remote Keyless Entry, Remote Vehicle Starter System, Single Slot CD/MP3 Player, SLT Crew Cab Value Package, Steering Wheel Audio Controls, Theft Deterrent System (Unauthorized Entry), Trailering Equipment, Universal Home Remote, Wheels: 20" x 9" Chrome Aluminum.

\$1000 - Dealer Trade-in Allowance (Must own and trade a 2014 or newer passenger vehicle to qualify for the Dealer Trade-in Allowance), Allowance is \$1000 above True Car Cash Offer. This offer is based on the current condition of the vehicle and must be appraised at the Dealership to receive the Trade-In Allowance. \$1000 - Dealer Finance Discount (Must qualify and finance with GM Financial, not available with special financing rates or programs.) Price does not include tax, tag, and fees.

## Vehicle History Report : as Of 04/25/2024

**CARFAX**

Snapshot

**2014 GMC SIERRA 1500 SLT**



**Damage reported: minor damage**



**29** Service history records



**2** Previous owners



Personal vehicle



**136,476** Last reported odometer reading



**FREE CARFAX Report**

See the full CARFAX Report for additional information

\*carfax Snapshot is a reflection of available information on the date the report was pulled. carfax is constantly being updated with new information and is subject to change at any time.

## Our Location :



2014 GMC Sierra 1500 SLT

Parks Chevrolet, Inc. - 833-825-2763 - View this car on our website at [parksdeals.com/7065639/ebrochure](https://parksdeals.com/7065639/ebrochure)

## Installed Options

### Interior

- Seats, front 40/20/40 leather-appointed split-bench 3-passenger with (KA1) heated seat cushions and seat backs. Includes 10-way power driver and front passenger seat adjusters, including driver/front passenger power recline, driver/front passenger power lumbar, 2-position driver memory and adjustable outboard head restraints.
- Seating, heated driver and front passenger
- Floor covering, color-keyed carpeting with rubberized vinyl floor mats (Double Cab and Crew Cabs include second row floor mats)
- Steering column, manual Tilt-Wheel
- Steering wheel, leather-wrapped with audio and cruise controls- Door locks, power
- Remote Keyless Entry- Cruise control, steering wheel-mounted
- Defogger, rear-window electric
- Seat, rear 60/40 folding bench (folds up), 3-passenger (includes child seat top tether anchor)
- Instrumentation, 6-gauge cluster featuring speedometer, fuel level, engine temperature, tachometer, voltage and oil pressure
- Driver Information Center, 4.2-inch diagonal color display includes driver personalization, warning messages and vehicle information
- Windows, power with driver express up and down and express down on all other windows
- Pedals, power-adjustable- Remote vehicle starter system- Universal Home Remote
- Theft-deterrent system, unauthorized entry
- Air conditioning, dual-zone automatic climate control- Power outlet, 110-volt AC
- Mirror, inside rearview auto-dimming

## Option Packages

### Factory Installed Packages

#### ENGINE, 5.3L ECOTEC3 V8 WITH ACTIVE FUEL MANAGEMENT

Direct Injection and Variable Valve Timing, includes aluminum block construction with Flex Fuel capability, capable of running on unleaded or up to 85% ethanol (355 hp [265 kW] @ 5600 rpm, 383 lb-ft of torque [518 Nm] @ 4100 rpm; more than 300 lb-ft of torque from 2000 to 5600 rpm)

- Visors, driver and front passenger illuminated vanity mirrors
- Assist handle, front passenger on A-pillar

---

## Exterior

- Wheels, 18" x 8.5" (45.7 cm x 21.6 cm) polished aluminum
- Tires, P265/65R18 all-season, blackwall (Needs to be upgraded to All-Terrain tires when (Z71) Off-Road Suspension Package is ordered.)
- Wheel, full-size spare, 17" (43.2 cm) steel - Tire, spare P265/70R17 all-season, blackwall
- Mirrors, outside chrome cap, heated power-adjustable, power-folding and driver-side auto-dimming with integrated turn signal indicators and puddle lamps (includes driver's side spotter mirror)
- Wheelhouse liners, rear
- Tire carrier lock keyed cylinder lock that utilizes same key as ignition and door
- Bumper, front chrome- Bumper, rear chrome with rear bumper corner steps
- CornerStep, rear bumper- Moldings, bodyside, chrome
- Grille surround, chrome (With (GAT) All-Terrain Package grille is body colored.)
- Headlamps, halogen projector with LED signature- Fog lamps, front, halogen
- Lamps, cargo area, cab mounted with switch on center switch bank - Glass, deep-tinted
- LED Lighting, cargo box with switch on center switch bank
- Tailgate and bed rail protection caps, top
- Tailgate, locking utilizes same key as ignition and door - Tailgate, EZ-Lift and Lower
- Door handles, chrome

---

## Safety

- Seats, front 40/20/40 leather-appointed split-bench 3-passenger with (KA1) heated seat cushions and seat backs. Includes 10-way power driver and front passenger seat adjusters, including driver/front passenger power recline, driver/front passenger power lumbar, 2-position driver memory and adjustable outboard head restraints.
- Seating, heated driver and front passenger
- Floor covering, color-keyed carpeting with rubberized vinyl floor mats (Double Cab and Crew Cabs include second row floor mats)
- Steering column, manual Tilt-Wheel
- Steering wheel, leather-wrapped with audio and cruise controls- Door locks, power
- Remote Keyless Entry- Cruise control, steering wheel-mounted
- Defogger, rear-window electric
- Seat, rear 60/40 folding bench (folds up), 3-passenger (includes child seat top tether anchor)
- Instrumentation, 6-gauge cluster featuring speedometer, fuel level, engine temperature, tachometer, voltage and oil pressure
- Driver Information Center, 4.2-inch diagonal color display includes driver personalization, warning messages and vehicle information
- Windows, power with driver express up and down and express down on all other windows
- Pedals, power-adjustable- Remote vehicle starter system- Universal Home Remote
- Theft-deterrent system, unauthorized entry
- Air conditioning, dual-zone automatic climate control- Power outlet, 110-volt AC
- Mirror, inside rearview auto-dimming
- Visors, driver and front passenger illuminated vanity mirrors
- Assist handle, front passenger on A-pillar

---

## Mechanical

- Transmission, 6-speed automatic, electronically controlled with overdrive and tow/haul mode. Includes Cruise Grade Braking and Powertrain Grade Braking
  - Engine, 5.3L EcoTec3 V8 with Active Fuel Management Direct Injection and Variable Valve Timing, includes aluminum block construction with Flex Fuel capability, capable of running on unleaded or up to 85% ethanol (355 hp [265 kW] @ 5600 rpm, 383 lb-ft of torque [518 Nm] @ 4100 rpm; more than 300 lb-ft of torque from 2000 to 5600 rpm)
  - Rear axle, 3.08 ratio (Requires (L83) 5.3L EcoTec3 V8 engine.)
  - GVWR, 7000 lbs. (3175 kg) (Requires 2WD models and (L83) 5.3L EcoTec3 V8 engine or (L86) 6.2L EcoTec3 V8 engine. Not available with (NHT) Max Trailering Package.)
  - Differential, heavy-duty locking rear
  - Suspension Package, Handling/Trailering, heavy-duty includes 46 mm piston monotube shocks and 36mm front stabilizer bar
  - Rear wheel drive- Cooling, external engine oil cooler
  - Cooling, auxiliary external transmission oil cooler- Alternator, 150 amps
  - Battery, heavy-duty 720 cold-cranking amps/80 Amp-hr, maintenance-free with rundown protection and retained accessory power
  - Frame, fully-boxed, hydroformed front section- Cargo tie downs (4) , movable upper
  - Steering, Electric Power Steering (EPS) assist, rack-and-pinion
  - Brakes, 4-wheel disc with DURALIFE rotors, 4-wheel antilock
  - Exhaust, aluminized stainless-steel muffler and tailpipe
-

---

Parks Chevrolet, Inc.

[parksdeals.com](https://parksdeals.com)

833-825-2763

615 NC-66 South

Kernersville, NC 27284

© 2024 AutoRevo - All rights reserved. - Powered by AutoRevo