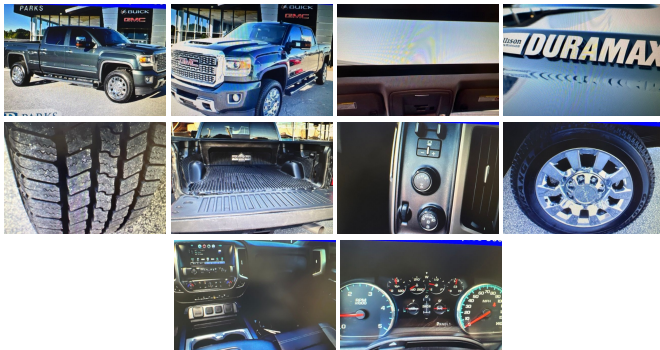


2018 GMC Sierra 2500HD Denali

View this car on our website at parksdeals.com/7065638/ebrochure



Our Price **\$74,991**

Specifications:

Year:	2018
VIN:	1GT12UEY1JF148886
Make:	GMC
Stock:	3K6224
Model/Trim:	Sierra 2500HD Denali
Condition:	Pre-Owned
Body:	Pickup Truck
Exterior:	Dark Slate Metallic
Engine:	ENGINE, DURAMAX 6.6L TURBO-DIESEL V8, B20-DIESEL COMPATIBLE
Interior:	Jet Black Leather
Mileage:	27,938
Drivetrain:	4 Wheel Drive

Certified. GMC Certified Pre-Owned Details:

- * 172 Point Inspection
- * Transferable Warranty
- * 24 months/24,000 miles (whichever comes first) CPO Scheduled Maintenance Plan and 3 days/150 miles (whichever comes first) Vehicle Exchange Program. SiriusXM 3-month trial subscription
- * Warranty Deductible: \$0
- * Powertrain Limited Warranty: 72 Month/100,000 Mile (whichever comes first) from original in-service date
- * Vehicle History
- * Roadside Assistance
- * Limited Warranty: 12 Month/12,000 Mile (whichever comes first) from certified purchase date

Parks Chevrolet in Kernersville, NC ! We offer low payment - easy financing on everything ! We sell in volume and that saves you money!!

2018 Dark Slate Metallic GMC Sierra 2500HD Allison 1000 6-Speed Automatic, 4WD, Jet Black Leather, 110-Volt AC Power Outlet, 150 Amps Alternator, 8" Multi-Color Driver Instrument Info Display, Auto-Dimming Inside Rear-View Mirror, Black Frame-Mounted Front Recovery Hooks, Bluetooth?? For Phone, Body-Color Front Bumper, Bose 7 Speaker Sound System, Chrome Bodyside Moldings, Chrome Door Handles, Chrome Power-Adjustable Heated Outside Mirrors, Chrome Recovery Hooks, Color-Keyed Carpeted Floor Mats, Color-Keyed Carpeting Floor Covering, Deep-Tinted Glass, Driver & Front Passenger Vanity Mirror Visors, Driver Alert Package, Dual-Zone Automatic Climate Control, Duramax Plus Package, Electric Rear-Window Defogger, Electronic Shift Transfer Case, Exterior Parking Camera Rear, EZ-Lift & Lower Tailgate, Forward Collision Alert, Front

tog lights, Front Halogen Fog Lamps, Fully automatic headlights, GMC 4G LTE, GMC Connected Access, HD Radio, Heated & Ventilated Front Bucket Seats, Heated Leather Wrapped Steering Wheel, Heated Power-Adjustable Outside Mirrors, Heavy-Duty Handling/Trailing Suspension Package, Manual Tilt-Wheel/Telescoping Steering Column, Navigation System, OnStar & GMC Connected Services Capable, Power Sliding Rear Window w/Defogger, Power Sunroof, Power Windows w/Driver Express Up & Down, Power-Adjustable Pedals For Accelerator & Brake, Preferred Equipment Group 5SA, Rear 60/40 Folding Bench Seat (Folds Up), Rear Body-Color Bumper w/Bumper CornerSteps, Rear Wheelhouse Liners, Remote Keyless Entry, Remote Locking Tailgate, Remote Vehicle Starter System, Single Slot CD/MP3 Player, SiriusXM Satellite Radio, Steering Wheel Audio Controls, Theft Deterrent System (Unauthorized Entry), Trailer Brake Controller, Trailing Equipment, Ultrasonic Front & Rear Park Assist, Universal Home Remote, Wheels: 20" Chrome Cast Aluminum.

\$1000 - Dealer Trade-in Allowance (Must own and trade a 2014 or newer passenger vehicle to qualify for the Dealer Trade-in Allowance), Allowance is \$1000 above True Car Cash Offer. This offer is based on the current condition of the vehicle and must be appraised at the Dealership to receive the Trade-In Allowance. \$1000 - Dealer Finance Discount (Must qualify and finance with GM Financial, not available with special financing rates or programs.) Price does not include tax, tag, and fees.

2018 GMC Sierra 2500HD Denali

Parks Chevrolet, Inc. - 833-825-2763 - View this car on our website at parksdeals.com/7065638/ebrochure

Vehicle History Report : as Of 04/10/2024

CARFAX

Snapshot

2018 GMC SIERRA 2500HD DENALI



Accident reported: minor to moderate damage



24 Service history records



3 Previous owners



Types of owners: Commercial, Personal



44,633 Last reported odometer reading



FREE CARFAX Report

See the full CARFAX Report for additional information

*carfax Snapshot is a reflection of available information on the date the report was pulled. carfax is constantly being updated with new information and is subject to change at any time.

Our Location :



Installed Options

Interior

- Seats, front full-feature leather-appointed bucket with (KA1) heated seat cushions and seat backs. Includes 12-way power driver and front passenger seat adjusters, including 4-way power lumbar control, 2-position driver memory, adjustable head restraints, (D07) floor console and storage pockets and (K4C) wireless charging (Included with (PDR) 2500HD SLT Gas Premium Plus Package.)
- Seat trim, Perforated leather-appointed
- Seating, heated and ventilated perforated leather-appointed front bucket
- Safety Alert Seat- Steering wheel, heated, leather wrapped with audio and cruise controls
- Steering wheel audio controls- Floor mats, color-keyed carpeted first and second row
- Window, power, rear sliding with rear defogger (Not included when (VYU) Snow Plow Prep Package is ordered.)
- Door locks, power- Cruise control, steering wheel-mounted- Remote Keyless Entry
- Universal Home Remote (Not included when (VYU) Snow Plow Prep Package is ordered.)
- Defogger, rear-window electric
- Seat, rear 60/40 folding bench (folds up), 3-passenger (includes child seat top tether anchor)
- Steering column, manual Tilt-Wheel and telescoping
- Console, floor mounted with cup holders, cell phone storage, power cord management, hanging file holder capability and (K4C) wireless charging
- Floor covering, color-keyed carpeting
- Instrumentation, 6-gauge cluster featuring speedometer, fuel level, engine temperature, tachometer, voltage and oil pressure
- Display, customizable driver display, 8" multi-color configurable
- Windows, power with driver express up and down and express down on all other windows
- Theft-deterrent system, unauthorized entry- Pedals, power-adjustable
- Remote vehicle starter system- Air conditioning, dual-zone automatic climate control
- Power outlet, 110-volt AC- Mirror, inside rearview auto-dimming
- Visors, driver and front passenger illuminated vanity mirrors
- Assist handle, front passenger and driver on A-pillars

Exterior

- Wheels, 20" (50.8 cm) chromed cast aluminum
- Tires, LT265/60R20E all-terrain, blackwall
- LPO, Assist steps, chromed tubular, 6" rectangular (dealer installed) (May be substituted with (VXJ) assist steps, LPO. (VXH) is deleted when (VXJ) assist steps, LPO is specified.)
- Mirrors, outside chrome cap, heated power-adjustable, power-folding and driver-side auto-dimming with integrated turn signal indicators and puddle lamps (includes driver's side spotter mirror)
- Bed Liner, Spray-on Pickup box bed liner consisting of high pressure, chemically bonded, sprayed-on polyurea & polyurethane liner formulation. Liner is permanently bonded to the truck bed providing a water tight seal. Includes embossed Denali logo on front bed wall. The textured, non-skid surface is black in color and robotically applied. Spray-on liner covers entire bed interior surface below side rails, including tailgate, front box top rail, gauge hole plugs and lower tie down loops. (Not available with (VZX) bed liner, LPO.)
- Tire carrier lock keyed cylinder lock that utilizes same key as ignition and door
- Wheelhouse liners, rear- Bumper, front, body-color- CornerStep, rear bumper
- Bumper, rear body-color with bumper CornerSteps- Moldings, bodyside, chrome
- Headlamps, high intensity discharge (HID) projector-beam with GMC signature LED lighting
- Lamps, cargo area, cab mounted with switch on center switch bank
- LED Lighting, cargo box with switch on center switch bank - Fog lamps, front, halogen
- Mirror caps, chrome- Glass, deep-tinted- Door handles, chrome
- Capless Fuel Fill (Requires gas engine and (E63) pickup box.)
- Tailgate and bed rail protection caps, top - Remote Locking Tailgate
- Tailgate, EZ-Lift and Lower

Safety

- Seats, front full-feature leather-appointed bucket with (KA1) heated seat cushions and seat backs. Includes 12-way power driver and front passenger seat adjusters, including 4-way power lumbar control, 2-position driver memory, adjustable head restraints, (D07) floor console and storage pockets and (K4C) wireless charging (Included with (PDR) 2500HD SLT Gas Premium Plus Package.)
- Seat trim, Perforated leather-appointed
- Seating, heated and ventilated perforated leather-appointed front bucket
- Safety Alert Seat- Steering wheel, heated, leather wrapped with audio and cruise controls
- Steering wheel audio controls- Floor mats, color-keyed carpeted first and second row
- Window, power, rear sliding with rear defogger (Not included when (VYU) Snow Plow Prep Package is ordered.)

Option Packages

Factory Installed Packages

ENGINE, DURAMAX 6.6L TURBO-DIESEL V8, B20-DIESEL COMPATIBLE

(445 hp [332 kW] @ 2800 rpm, 910 lb-ft of torque
[1220 Nm] @ 1600 rpm)

Package is ordered.)

- Door locks, power- Cruise control, steering wheel-mounted- Remote Keyless Entry
- Universal Home Remote (Not included when (VYU) Snow Plow Prep Package is ordered.)
- Defogger, rear-window electric
- Seat, rear 60/40 folding bench (folds up), 3-passenger (includes child seat top tether anchor)
- Steering column, manual Tilt-Wheel and telescoping
- Console, floor mounted with cup holders, cell phone storage, power cord management, hanging file holder capability and (K4C) wireless charging
- Floor covering, color-keyed carpeting
- Instrumentation, 6-gauge cluster featuring speedometer, fuel level, engine temperature, tachometer, voltage and oil pressure
- Display, customizable driver display, 8" multi-color configurable
- Windows, power with driver express up and down and express down on all other windows
- Theft-deterrent system, unauthorized entry- Pedals, power-adjustable
- Remote vehicle starter system- Air conditioning, dual-zone automatic climate control
- Power outlet, 110-volt AC- Mirror, inside rearview auto-dimming
- Visors, driver and front passenger illuminated vanity mirrors
- Assist handle, front passenger and driver on A-pillars

Mechanical

- Engine, Vortec 6.0L Variable Valve Timing V8 SFI, E85-compatible, FlexFuel capable of running on unleaded or up to 85% ethanol (360 hp [268.4 kW] @ 5400 rpm, 380 lb-ft of torque [515.0 N-m] @ 4200 rpm
- Transmission, 6-speed automatic, heavy-duty, electronically controlled with overdrive and tow/haul mode. Includes Cruise Grade Braking and Powertrain Grade Braking (Requires (L96) Vortec 6.0L V8 SFI engine or (LC8) 6.0L V8 SFI Gaseous CNG/LPG capable engine.)
- Trailering equipment Trailering hitch platform 2.5" with a 2.0" insert for HD, 7-wire harness with independent fused trailering circuits mated to a 7-way sealed connector to hook up parking lamps, backup lamps, right and left turn signals, an electric brake lead, battery and a ground. The trailer connector also includes the 4-way for use on trailers without brakes - park, brake/turn lamps
- Recovery hooks, front, frame-mounted, black
- Steering, Recirculating Ball with smart flow power steering system
- Steering, Digital Steering Assist
- Rear axle, 4.10 ratio (Requires (L96) Vortec 6.0L V8 SFI engine.)
- Suspension Package, Standard includes 51mm twin tube shock absorbers and 33mm front stabilizer bar
- Pickup box- GVWR, 9500 lbs. (4309 kg) (Requires (L96) Vortec 6.0L V8 SFI engine.)
- Air cleaner, high-capacity
- Transfer case, electronic shift with rotary dial controls (Requires 4WD models.)
- Differential, heavy-duty locking rear- Four wheel drive- Cooling, external engine oil cooler
- Cooling, auxiliary external transmission oil cooler
- Battery, heavy-duty 720 cold-cranking amps/80 Amp-hr, maintenance-free with rundown protection and retained accessory power
- Alternator, 150 amps- Trailer brake controller, integrated
- Frame, fully-boxed, hydroformed front section
- Underbody Shield, frame-mounted shields includes front underbody shield starting behind front bumper and running to first cross-member, protecting front underbody, oil pan, differential case and transfer case
- Cargo tie downs (4), movable upper
- Brakes, 4-wheel antilock, 4-wheel disc with DuraLife brake rotors
- Exhaust, aluminized stainless-steel muffler and tailpipe

Parks Chevrolet, Inc.

parksdeals.com

833-825-2763

615 NC-66 South

Kernersville, NC 27284

© 2024 AutoRevo - All rights reserved. - Powered by AutoRevo