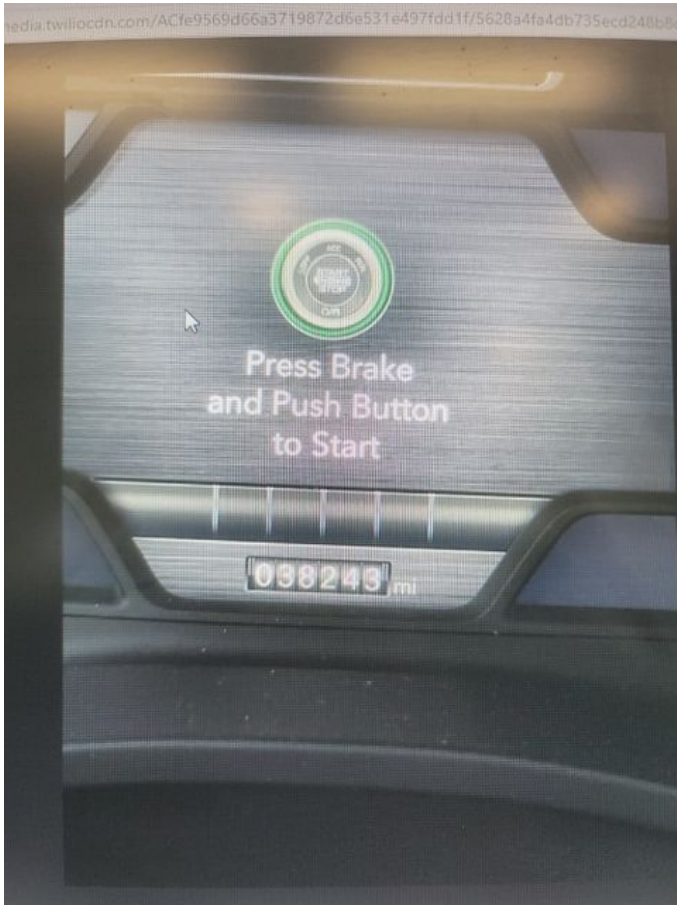


parksdeals.com
833-825-2763
615 NC-66 South
Kernersville, NC
27284

Parks Chevrolet,
Inc.

2019 Ram All-New 1500 Big Horn/Lone Star

View this car on our website at parksdeals.com/7065101/ebrochure



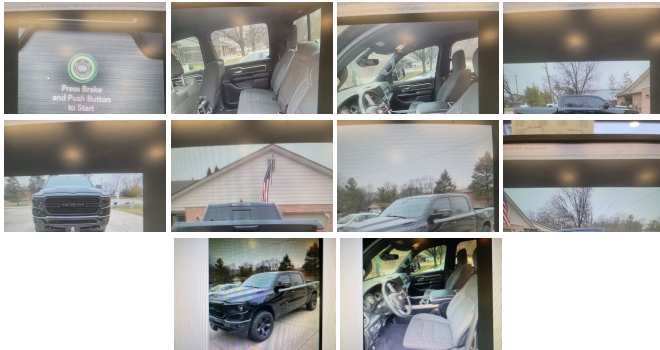
Our Price **\$39,794**

Specifications:

Year:	2019
VIN:	1C6RRFFG8KN815712
Make:	Ram
Stock:	109907XA
Model/Trim:	All-New 1500 Big Horn/Lone Star
Condition:	Pre-Owned
Body:	Pickup Truck
Exterior:	Diamond Black Crystal Pearlcoat
Engine:	ENGINE: 3.6L V6 24V VVT ETORQUE UPG I
Interior:	Black Cloth
Mileage:	38,243
Drivetrain:	4 Wheel Drive
Economy:	City 19 / Highway 24

Parks Chevrolet in Kernersville, NC ! We offer low payment - easy financing on everything ! We sell in volume and that saves you money!!

2019 Diamond Black Crystal Pearlcoat Ram 1500 CARFAX One-Owner. Clean CARFAX. Bluetooth, Backup Camera, Tow Package, Remote Start, CARFAX One-Owner, CARFAX Clean Vehicle History, Trailer / Tow Hitch, 115V Auxiliary Power Outlet, 115V Auxiliary Rear Power Outlet, 2 USB Full Function/Charge Only Media Hub, 3 Rear Seat Head Restraints, 4 Way Front Headrests, 400W Inverter, 8.4" Touchscreen Display, Air Conditioning ATC w/Dual Zone Control, Auto-Dimming Exterior Driver Mirror, Auto-Dimming Rear-View Mirror, Big Horn IP Badge, Big Horn Level 2 Equipment Group, Black Appearance Package, Black Exterior Truck Badging, Black Headlamp Bezels, Black Interior Accents, Body Color Door Handles, Body Color Front Bumper, Body Color Rear Bumper w/Step Pads, Bucket Seats, Center Console Parts Module, Class IV Receiver Hitch, Cluster 7.0" TFT Color Display, Dampened Tailgate, Deluxe Cloth Bucket Seats, Dual Exhaust w/Black Tips, Exterior Mirrors Courtesy Lamps, Exterior Mirrors w/Memory, Exterior Mirrors w/Supplemental Signals, Foam Bottle Insert (Door Trim Panel), Front Seat Back Map Pockets, Full Length Floor Console, Grille B/Color Outline 1 Texture 2, Heated Front Seats, Heated Steering Wheel, Integrated Center Stack Radio, Manual Adjust 4-Way Front Passenger Seat, ParkSense Front/Rear Park Assist w/Stop, Power 4-Way Driver Lumbar Adjust, Power 8-Way Driver Seat, Power Adjustable Pedals, Power Heated Fold Away Mirrors, Power Heated Fold-Away Mirrors, Power-Folding Mirrors, Protection Group, Quick Order Package 23Z Big Horn/Lone Star, Radio: Uconnect 4 w/8.4" Display, Rear 60/40 Folding Seat, Rear Dome w/On/Off Switch Lamp, Rear Power Sliding Window, Rear Window Defroster, Remote Start System, Security Alarm, Single Disc Remote CD Player, SiriusXM Satellite Radio, Steering Wheel Mounted Audio Controls, Sun Visors w/Illuminated Vanity Mirrors, Tow Hooks, Universal Garage Door Opener, Wheels: 20" x 9" Cast Aluminum Black.



\$1000 - Dealer Trade-in Allowance (Must own and trade a 2014 or newer passenger vehicle to qualify for the Dealer Trade-in Allowance), Allowance is \$1000 above True Car Cash Offer. This offer is based on the current condition of the vehicle and must be appraised at the Dealership to receive the Trade-In Allowance. \$1000 - Dealer Finance Discount (Must qualify and finance with GM Financial, not available with special financing rates or programs.) Price does not include tax, tag, and fees.

Vehicle History Report : as Of 04/24/2024

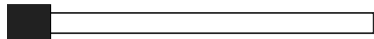


Snapshot

2019 RAM 1500 BIG HORN



Accident reported: very minor damage



MINOR MODERATE SEVERE



Regular oil changes



2 Previous owners



Types of owners: Personal lease, Personal



55,532 Last reported odometer reading



FREE CARFAX Report

See the full CARFAX Report for additional information

*carfax Snapshot is a reflection of available information on the date the report was pulled. carfax is constantly being updated with new information and is subject to change at any time.

Our Location :



Installed Options

Interior

- Gauges -inc: Speedometer, Odometer, Voltmeter, Oil Pressure, Engine Coolant Temp, Tachometer, Oil Temperature, Transmission Fluid Temp, Engine Hour Meter, Trip Odometer and Trip Computer
- Power Rear Windows
- Remote Keyless Entry w/Integrated Key Transmitter, Illuminated Entry and Panic Button
- Manual Air Conditioning- Cloth Bench Seat
- Passenger Visor Vanity Mirror w/Passenger Illumination
- Full Carpet Floor Covering -inc: Carpet Front And Rear Floor Mats
- Power 1st Row Windows w/Driver And Passenger 1-Touch Up/Down
- Power Door Locks w/Autolock Feature- Trip Computer- Front Seat Back Map Pockets
- 4-Way Driver Seat -inc: Manual Recline and Fore/Aft Movement
- 4-Way Passenger Seat -inc: Manual Recline and Fore/Aft Movement
- Front Facing Cloth Rear Seat- 3 Rear Seat Head Restraints
- Manual Tilt/Telescoping Steering Column- Rear 60/40 Folding Seat
- Leather Steering Wheel- Illuminated Front Cupholder- Rear Cupholder
- 1 12V DC Power Outlet- Compass- Proximity Key For Push Button Start Only
- Valet Function- Cruise Control w/Steering Wheel Controls

Option Packages

Factory Installed Packages

ENGINE: 3.6L V6 24V VVT ETORQUE UPG I

- HVAC -inc: Underseat Ducts and Console Ducts - Locking Glove Box
- Full Cloth Headliner
- Interior Trim -inc: Deluxe Sound Insulation, Metal-Look Instrument Panel Insert, Metal-Look Door Panel Insert and Chrome/Metal-Look Interior Accents
- Vinyl Door Trim Insert- Metal-Look Gear Shifter Material- Day-Night Rearview Mirror
- Mini Overhead Console and 1 12V DC Power Outlet- Front Map Lights
- Fade-To-Off Interior Lighting- Pickup Cargo Box Lights- GPS Antenna Input
- Instrument Panel Bin, Dashboard Storage, RamBin Interior Concealed Storage, Driver / Passenger And Rear Door Bins and 1st Row Underseat Storage
- Delayed Accessory Power- Systems Monitor- Outside Temp Gauge- Analog Appearance
- Redundant Digital Speedometer- Seats w/Cloth Back Material
- Front Center Armrest w/Storage and Rear Center Armrest- 4 Way Front Headrests
- Sentry Key Engine Immobilizer

Exterior

- Wheels: 18" x 8"- Full-Size Spare Tire Stored Underbody w/Crankdown
- Black Power Heated Side Mirrors w/Manual Folding- Sliding Rear Window
- Tailgate/Rear Door Lock Included w/Power Door Locks- Front Fog Lamps
- Tires: 275/65R18 BSW All Season LRR- Regular Box Style- Steel Spare Wheel
- Clearcoat Paint- Chrome Front Bumper w/Chrome Rub Strip/Fascia Accent
- Chrome Rear Step Bumper- Black Side Windows Trim- Chrome Door Handles
- Deep Tinted Glass- Variable Intermittent Wipers- Galvanized Steel/Aluminum Panels
- Front License Plate Bracket- Black Grille w/Chrome Surround
- Tailgate Rear Cargo Access
- Auto On/Off Aero-Composite Halogen Daytime Running Headlamps w/Delay-Off
- Cargo Lamp w/High Mount Stop Light- Perimeter/Approach Lights- Laminated Glass

Safety

- Gauges -inc: Speedometer, Odometer, Voltmeter, Oil Pressure, Engine Coolant Temp, Tachometer, Oil Temperature, Transmission Fluid Temp, Engine Hour Meter, Trip Odometer and Trip Computer
- Power Rear Windows
- Remote Keyless Entry w/Integrated Key Transmitter, Illuminated Entry and Panic Button
- Manual Air Conditioning- Cloth Bench Seat
- Passenger Visor Vanity Mirror w/Passenger Illumination
- Full Carpet Floor Covering -inc: Carpet Front And Rear Floor Mats
- Power 1st Row Windows w/Driver And Passenger 1-Touch Up/Down
- Power Door Locks w/Autolock Feature- Trip Computer- Front Seat Back Map Pockets
- 4-Way Driver Seat -inc: Manual Recline and Fore/Aft Movement
- 4-Way Passenger Seat -inc: Manual Recline and Fore/Aft Movement
- Front Facing Cloth Rear Seat- 3 Rear Seat Head Restraints
- Manual Tilt/Telescoping Steering Column- Rear 60/40 Folding Seat
- Leather Steering Wheel- Illuminated Front Cupholder- Rear Cupholder
- 1 12V DC Power Outlet- Compass- Proximity Key For Push Button Start Only
- Valet Function- Cruise Control w/Steering Wheel Controls
- HVAC -inc: Underseat Ducts and Console Ducts - Locking Glove Box
- Full Cloth Headliner
- Interior Trim -inc: Deluxe Sound Insulation, Metal-Look Instrument Panel Insert, Metal-Look Door Panel Insert and Chrome/Metal-Look Interior Accents
- Vinyl Door Trim Insert- Metal-Look Gear Shifter Material- Day-Night Rearview Mirror
- Mini Overhead Console and 1 12V DC Power Outlet- Front Map Lights
- Fade-To-Off Interior Lighting- Pickup Cargo Box Lights- GPS Antenna Input
- Instrument Panel Bin, Dashboard Storage, RamBin Interior Concealed Storage, Driver / Passenger And Rear Door Bins and 1st Row Underseat Storage
- Delayed Accessory Power- Systems Monitor- Outside Temp Gauge- Analog Appearance
- Redundant Digital Speedometer- Seats w/Cloth Back Material
- Front Center Armrest w/Storage and Rear Center Armrest- 4 Way Front Headrests
- Sentry Key Engine Immobilizer

Mechanical

- Transmission: 8-Speed Automatic (850RE)
- Transmission w/Driver Selectable Mode and Sequential Shift Control w/Steering Wheel Controls
- Class III Towing Equipment -inc: Hitch and Trailer Sway Control
- Engine: 3.6L V6 24V VVT eTorque UPG I- 3.21 Rear Axle Ratio- GVWR: 6,900 lbs
- 50 State Emissions- Engine Auto Stop-Start Feature- Electronic Transfer Case
- Part And Full-Time Four-Wheel Drive- Engine Oil Cooler
- 730CCA Maintenance-Free Battery- 48V Belt Starter Generator- Trailer Wiring Harness
- 1670# Maximum Payload- HD Shock Absorbers- Front And Rear Anti-Roll Bars
- Electric Power-Assist Steering- Single Stainless Steel Exhaust- 26 Gal. Fuel Tank
- Auto Locking Hubs- Short And Long Arm Front Suspension w/Coil Springs

- Multi-Link Rear Suspension w/Coil Springs
 - Regenerative 4-Wheel Disc Brakes w/4-Wheel ABS, Front Vented Discs, Brake Assist, Hill Hold Control and Electric Parking Brake
 - Lithium Ion Traction Battery 0.43 kWh Capacity
-

Parks Chevrolet, Inc.

parksdeals.com

833-825-2763

615 NC-66 South

Kernersville, NC 27284

© 2024 AutoRevo - All rights reserved. - Powered by AutoRevo