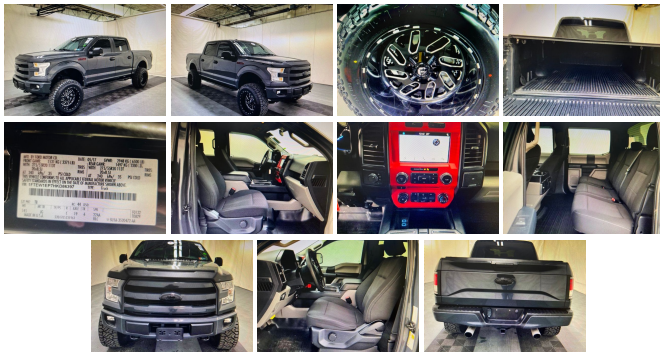


2017 Ford F-150 XL

View this car on our website at parksdeals.com/7065097/ebrochure



Our Price **\$38,994**

Specifications:

Year:	2017
VIN:	1FTEW1EP7HKD86397
Make:	Ford
Stock:	3K6206
Model/Trim:	F-150 XL
Condition:	Pre-Owned
Body:	Pickup Truck
Exterior:	Gray
Engine:	ENGINE: 2.7L V6 ECOBOOST
Interior:	Medium Earth Gray Cloth
Mileage:	51,894
Drivetrain:	4 Wheel Drive
Economy:	City 18 / Highway 23

Parks Chevrolet in Kernersville, NC ! We offer low payment - easy financing on everything ! We sell in volume and that saves you money!!

2017 Gray Ford F-150 Clean CARFAX. Bluetooth, Backup Camera, Tow Package, CARFAX Clean Vehicle History, Trailer / Tow Hitch, LIFTED, SUSPENSION LIFT, PREMIUM WHEELS, 4WD, 4.2" Productivity Screen in Instrument Cluster, ABS brakes, Cruise Control, Electronic Stability Control, Equipment Group 101A Mid, GVWR: 6,350 lbs Payload Package, Illuminated Entry, Low tire pressure warning, MyKey, Perimeter Alarm, Power Door Locks, Power Front & Rear Windows, Power Glass Sideview Mirrors w/Black Skull Caps, Power Tailgate Lock, Radio: AM/FM Stereo/Single-CD Player, SYNC, Traction control, XL Power Equipment Group.

\$1000 - Dealer Trade-in Allowance (Must own and trade a 2014 or newer passenger vehicle to qualify for the Dealer Trade-in Allowance), Allowance is \$1000 above True Car Cash Offer. This offer is based on the current condition of the vehicle and must be appraised at the Dealership to receive the Trade-In Allowance. \$1000 - Dealer Finance Discount (Must qualify and finance with GM Financial, not available with special financing rates or programs.) Price does not include tax, tag, and fees.

Vehicle History Report : as Of 04/23/2024

CARFAX

Snapshot

2017 FORD F-150 XL



No accidents or damage reported to CARFAX



8 Service history records



5 Previous owners



Personal vehicle



Last owned in Virginia



67,260 Last reported odometer reading



FREE CARFAX Report

See the full CARFAX Report for additional information

*carfax Snapshot is a reflection of available information on the date the report was pulled. carfax is constantly being updated with new information and is subject to change at any time.

Our Location :



2017 Ford F-150 XL

Parks Chevrolet, Inc. - 833-825-2763 - View this car on our website at parksdeals.com/7065097/ebrochure

Installed Options

Interior

- Cloth 40/20/40 Front Seat -inc: 2-way manual driver/passenger adjustment and armrest
- 4-Way Driver Seat -inc: Manual Recline and Fore/Aft Movement
- 4-Way Passenger Seat -inc: Manual Recline and Fore/Aft Movement
- 60-40 Folding Split-Bench Front Facing Fold-Up Cushion Rear Seat
- Manual Tilt/Telescoping Steering Column
- Gauges -inc: Speedometer, Odometer, Voltmeter, Oil Pressure, Engine Coolant Temp, Tachometer, Transmission Fluid Temp and Trip Odometer
- Manual Rear Windows- Front Cupholder- Rear Cupholder- Compass
- Manual Air Conditioning- HVAC -inc: Underseat Ducts- Glove Box
- Interior Trim -inc: Cabback Insulator and Chrome Interior Accents - Full Cloth Headliner
- Urethane Gear Shifter Material- Day-Night Rearview Mirror
- Passenger Visor Vanity Mirror- 3 12V DC Power Outlets- Fade-To-Off Interior Lighting
- Full Vinyl/Rubber Floor Covering- Pickup Cargo Box Lights
- Instrument Panel Bin, Dashboard Storage, Driver / Passenger And Rear Door Bins
- Manual 1st Row Windows- Outside Temp Gauge- Analog Appearance
- Front Center Armrest
- Manual Adjustable Front Head Restraints and Manual Adjustable Rear Head Restraints
- Securilock Anti-Theft Ignition (pats) Engine Immobilizer- Air Filtration

Option Packages

Factory Installed Packages

ENGINE: 2.7L V6 ECOBOOST
-inc: auto start/stop, 3.55 Axle Ratio, GVWR:
6,500 lbs Payload Package **\$995**

Option Packages Total **\$995**

Exterior

- Wheels: 17" Silver Steel- Tires: P265/70R17 OWL A/T
- Full-Size Spare Tire Stored Underbody w/Crankdown
- Auto On/Off Aero-Composite Halogen Daytime Running Lights Preference Setting Headlamps w/Delay-Off
- Regular Box Style- Steel Spare Wheel- Clearcoat Paint- Black Rear Step Bumper
- Black Front Bumper w/Black Rub Strip/Fascia Accent and 2 Tow Hooks
- Black Side Windows Trim- Black Door Handles
- Black Manual Side Mirrors w/Convex Spotter and Manual Folding- Fixed Rear Window
- Light Tinted Glass- Variable Intermittent Wipers- Aluminum Panels- Black Grille
- Tailgate Rear Cargo Access- Manual Tailgate/Rear Door Lock
- Cargo Lamp w/High Mount Stop Light

Safety

- Cloth 40/20/40 Front Seat -inc: 2-way manual driver/passenger adjustment and armrest
- 4-Way Driver Seat -inc: Manual Recline and Fore/Aft Movement
- 4-Way Passenger Seat -inc: Manual Recline and Fore/Aft Movement
- 60-40 Folding Split-Bench Front Facing Fold-Up Cushion Rear Seat
- Manual Tilt/Telescoping Steering Column
- Gauges -inc: Speedometer, Odometer, Voltmeter, Oil Pressure, Engine Coolant Temp, Tachometer, Transmission Fluid Temp and Trip Odometer
- Manual Rear Windows- Front Cupholder- Rear Cupholder- Compass
- Manual Air Conditioning- HVAC -inc: Underseat Ducts- Glove Box
- Interior Trim -inc: Cabback Insulator and Chrome Interior Accents - Full Cloth Headliner
- Urethane Gear Shifter Material- Day-Night Rearview Mirror
- Passenger Visor Vanity Mirror- 3 12V DC Power Outlets- Fade-To-Off Interior Lighting
- Full Vinyl/Rubber Floor Covering- Pickup Cargo Box Lights
- Instrument Panel Bin, Dashboard Storage, Driver / Passenger And Rear Door Bins
- Manual 1st Row Windows- Outside Temp Gauge- Analog Appearance
- Front Center Armrest
- Manual Adjustable Front Head Restraints and Manual Adjustable Rear Head Restraints
- Securilock Anti-Theft Ignition (pats) Engine Immobilizer- Air Filtration

Mechanical

- Engine: 3.5L V6 Ti-VCT FFV
- Transmission: Electronic 6-Speed Automatic -inc: tow/haul and sport mode
- 3.73 Axle Ratio- GVWR: 6,350 lbs Payload Package- Electronic Transfer Case
- Part-Time Four-Wheel Drive
- 70-Amp/Hr 610CCA Maintenance-Free Battery w/Run Down Protection
- 200 Amp Alternator- Towing Equipment -inc: Trailer Sway Control- Trailer Wiring Harness
- 1570# Maximum Payload- HD Shock Absorbers- Front Anti-Roll Bar
- Electric Power-Assist Speed-Sensing Steering- 23 Gal. Fuel Tank
- Single Stainless Steel Exhaust- Auto Locking Hubs
- Double Wishbone Front Suspension w/Coil Springs
- Leaf Rear Suspension w/Leaf Springs
- 4-Wheel Disc Brakes w/4-Wheel ABS, Front And Rear Vented Discs, Brake Assist, Hill Hold Control and Electric Parking Brake

Parks Chevrolet, Inc.

parksdeals.com

833-825-2763

615 NC-66 South

Kernersville, NC 27284

© 2024 AutoRevo - All rights reserved. - Powered by AutoRevo