

parksdeals.com
833-825-2763
615 NC-66 South
Kernersville, NC
27284

Parks Chevrolet,
Inc.

2022 Cadillac Escalade Premium Luxury Platinum

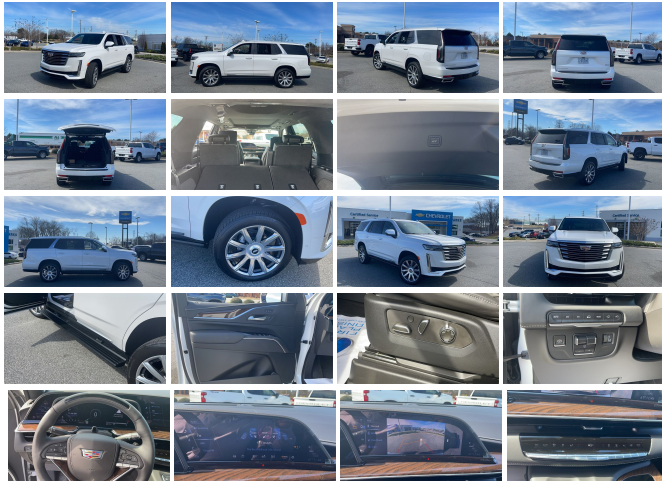
View this car on our website at parksdeals.com/7065096/ebrochure



Our Price **\$135,990**

Specifications:

Year:	2022
VIN:	1GYS4DKL8NR180594
Make:	Cadillac
Stock:	9K6212
Model/Trim:	Escalade Premium Luxury Platinum
Condition:	Pre-Owned
Body:	SUV
Exterior:	Crystal White Tricoat
Engine:	ENGINE, 6.2L V8 WITH DYNAMIC FUEL MANAGEMENT
Interior:	Jet Black Leather
Mileage:	2,671
Drivetrain:	4 Wheel Drive
Economy:	City 14 / Highway 19



Parks Chevrolet in Kernersville, NC ! We offer low payment - easy financing on everything ! We sell in volume and that saves you money!!

2022 Crystal White Tricoat Cadillac Escalade CARFAX One-Owner. Clean CARFAX. CARFAX One-Owner, CARFAX Clean Vehicle History, SUPER CRUISE, POWER RUNNING BOARDS, 4WD, Jet Black Leather, 8-Way Power Front Passenger Seat Adjuster, A/V remote, Adaptive Cruise Control, Adaptive suspension, Air Ride Adaptive Suspension, AKG Studio Reference 36-Speaker Audio System, Automatic Seat Belt Tightening, Automatic Stop/Start, Door Lock & Latch Shields, Electronic Limited-Slip Differential, Enhanced Automatic Emergency Braking, Enhanced Automatic Parking Assist, Entertainment system, Floor Console w/Covered Storage, Front Auxiliary 12-volt Power Outlet, Glass Breakage Sensor, Hitch Guidance w/Hitch View, Illuminating Front & Rear Sill Plates, Integrated Trailer Brake Controller, Navigation System, Platinum Interior Trim, Power driver seat, Power Panoramic Tilt-Sliding Sunroof, Preferred Equipment Group 1SG, Rear Camera Mirror, Rear Camera Mirror Washer, Rear Cross Traffic Alert, Rear Seat Entertainment System, Reconfigurable Full-Color Head-Up Display, Reverse Automatic Braking, Running Board Assist Steps, Smart Trailer Integration Indicator, Soft Closing Front & Rear Doors, Start/Stop System Disable Button, Theft-Deterrent Alarm System, Touring Package, Trailer Side Blind Zone Alert, Vehicle Inclination Sensor, Vehicle Interior Movement Sensor.

\$1000 - Dealer Trade-in Allowance (Must own and trade a 2014 or newer passenger vehicle to qualify for the Dealer Trade-in Allowance), Allowance is \$1000 above True Car Cash Offer. This offer is based on the current condition of the vehicle and must be appraised at the Dealership to receive the Trade-In Allowance. \$1000 - Dealer Finance Discount (Must qualify and finance with GM Financial, not available with special financing rates or programs.) Price does not include tax, tag, and fees.

2022 Cadillac Escalade Premium Luxury Platinum

Parks Chevrolet, Inc. - 833-825-2763 - View this car on our website at parksdeals.com/7065096/ebrochure

Our Location :



2022 Cadillac Escalade Premium Luxury Platinum

Parks Chevrolet, Inc. - 833-825-2763 - View this car on our website at parksdeals.com/7065096/ebrochure

Installed Options

Interior

- Seats, front bucket (Includes Semi-Aniline leather, 18-way driver and front passenger adjustments with massage.)
- Seats, second row bucket, power release (May substitute (ATT) second row 60/40 split-folding bench seats.)
- Seat trim, Leather- Seats, heated driver and front passenger
- Seats, heated and ventilated driver and front passenger
- Seats, heated second row outboard seats - Seat adjuster, driver 4-way power lumbar
- Seat adjuster, front passenger 4-way power lumbar - Seat, driver power lumbar massage
- Seat, front passenger power lumbar massage
- Memory settings includes two "presets" for driver seat adjuster, outside mirrors and power tilt/telescoping steering column
- Seats, third row 60/40 split-bench, power-folding
- Console, floor with covered storage, large and small storage bins, dual cup holders, electronic climate controls and second row heated seat controls. Also includes auxiliary power outlet, USB A/C ports and 110-volt outlet (Upgradeable to (DCK) Console refrigerator.)
- Floor mats, color-keyed carpeted first and second row, removable (Deleted when (VYW) Premium carpeted floor mats, LPO is ordered.)
- Steering column, power tilt and telescoping- Steering wheel, heated, automatic
- Steering wheel controls, audio, phone, cruise control Conversation Enhancement, gap distance and heated steering wheel
- Door locks, power programmable with lockout protection and delayed locking
- Keyless Open includes extended range Remote Keyless Entry - Adaptive Cruise Control
- Theft-deterrent alarm system, content theft alarm, self-powered horn
- Theft-deterrent system, unauthorized entry, engine immobilizer- Sensor, glass breakage
- Climate control, tri-zone automatic with individual climate settings for driver, right-front passenger and rear passengers (includes rear air vents)
- Air conditioning, rear- Rear Camera Mirror- Seat adjuster, driver 8-way power
- Seat adjuster, front passenger 8-way power - Rear Seat Reminder
- Floor covering, color-keyed carpeting- Sill plates, illuminating, front and rear

Option Packages

Factory Installed Packages

ENGINE, 6.2L V8 WITH DYNAMIC FUEL MANAGEMENT

Direct Injection and Variable Valve Timing,
includes aluminum block construction (420 hp
[313.2 kW] @ 5600 rpm, 460 lb-ft of torque
[623.7 Nm] @ 4100 rpm)

- Augmented Reality live image of what is in front of the vehicle displayed on the 14.2" diagonal Cluster Display. When a navigational route is active, the system will overlay directional information on the live image being displayed.
- Head-Up Display, full-color, reconfigurable (includes the following views: Speed, Audio/Phone, Navigation and Performance)
- Window control, all windows, Express-Up/Down (auto Express-Up/Down via key fob)
- Door lock and latch shields- Doors, front and rear, soft-close- Keyless Start, push-button
- Adaptive Remote Start
- Universal Home Remote includes garage door opener, programmable
- Sensor, vehicle inclination- Sensor, vehicle interior movement
- Wireless Phone Charging (The system wirelessly charges one compatible mobile device. Some phones have built-in wireless charging technology and others require a special adaptor/back cover. To check for phone or other device compatibility, see my.cadillac.com/learnAbout/wireless-charging or consult your carrier.)
- Power outlet, 110-volt
- Power outlet, front auxiliary, 12-volt, located in front console (Standard with (D07) Floor console with covered storage only.)
- Defogger, rear-window- Air filter, pollutant, odor and fine dust
- Platinum interior trim leather-wrapped instrument panel, console and upper door; sueded microfiber headliner and pillars
- Console, overhead
- Ambient lighting, interior selectable for instrument panel, doors, footwell, map pocket and door pull cups

Exterior

- Wheels, 22" (55.9 cm) 10-Spoke alloy, Polished with Dark Android finish and laser etching
- LPO, Wheel locks, includes 4 locks and 1 key (Note that LPO 22" wheels will come with wheel locks without the LPO code (SFE)) (Included with RPO Codes (SGK), (SMD) and (SGG). Deleted when any LPO wheels are ordered.)
- Luggage rack, roof-mounted, Chrome
- Assist steps, running board (Upgradeable to (B3L) power-retractable assist steps.)
- Tires, 275/50R22SL all-season, blackwall- Tire, spare 265/70R17SL all-season, blackwall
- Spare tire lock, hoist shaft
- Sunroof, power, panoramic with tilt, slide, express-open/close and sun shade control
- Moldings, Galvano bodyside
- Active Aero Shutters, front (Deleted when (LM2) 3.0L Turbo Diesel engine is ordered.)
- Headlamp control, automatic leveling system- Headlamps, automatic on/off
- Headlamps, LED- IntelliBeam, automatic high beam on/off
- LPO, Puddle lamps, Cadillac crest- Tail lamps, LED illumination
- Mirrors, outside heated power-adjustable power-folding, body-color, driver-side auto-dimming, integrated turn signal indicators and puddle lighting
- Glass, acoustic, laminated windshield- Glass, deep-tinted- Windshield, solar absorbing
- Wipers, front intermittent, Rainsense- Wiper, rear intermittent
- Rear Camera Mirror Washer- Door handles, Galvano accents- Door handles, illuminating
- Hands-Free Liftgate open and close, programmable memory height, with Cadillac branded projection light

Safety

- Seats, front bucket (Includes Semi-Aniline leather, 18-way driver and front passenger adjustments with massage.)
- Seats, second row bucket, power release (May substitute (ATT) second row 60/40 split-folding bench seats.)
- Seat trim, Leather- Seats, heated driver and front passenger
- Seats, heated and ventilated driver and front passenger
- Seats, heated second row outboard seats - Seat adjuster, driver 4-way power lumbar
- Seat adjuster, front passenger 4-way power lumbar- Seat, driver power lumbar massage
- Seat, front passenger power lumbar massage
- Memory settings includes two "presets" for driver seat adjuster, outside mirrors and power tilt/telescoping steering column
- Seats, third row 60/40 split-bench, power-folding
- Console, floor with covered storage, large and small storage bins, dual cup holders, electronic climate controls and second row heated seat controls. Also includes auxiliary power outlet, USB A/C ports and 110-volt outlet (Upgradeable to (DCK) Console refrigerator.)
- Floor mats, color-keyed carpeted first and second row, removable (Deleted when (VYW) Premium carpeted floor mats, LPO is ordered.)
- Steering column, power tilt and telescoping- Steering wheel, heated, automatic
- Steering wheel controls, audio, phone, cruise control Conversation Enhancement, gap distance and heated steering wheel
- Door locks, power programmable with lockout protection and delayed locking
- Keyless Open includes extended range Remote Keyless Entry - Adaptive Cruise Control
- Theft-deterrent alarm system, content theft alarm, self-powered horn
- Theft-deterrent system, unauthorized entry, engine immobilizer- Sensor, glass breakage
- Climate control, tri-zone automatic with individual climate settings for driver, right-front passenger and rear passengers (includes rear air vents)
- Air conditioning, rear- Rear Camera Mirror- Seat adjuster, driver 4-way power

- Air conditioning, rear- Rear Camera Mirror- Seat adjuster, driver 6-way power
- Seat adjuster, front passenger 8-way power- Rear Seat Reminder
- Floor covering, color-keyed carpeting- Sill plates, illuminating, front and rear
- Augmented Reality live image of what is in front of the vehicle displayed on the 14.2" diagonal Cluster Display. When a navigational route is active, the system will overlay directional information on the live image being displayed.
- Head-Up Display, full-color, reconfigurable (includes the following views: Speed, Audio/Phone, Navigation and Performance)
- Window control, all windows, Express-Up/Down (auto Express-Up/Down via key fob)
- Door lock and latch shields- Doors, front and rear, soft-close- Keyless Start, push-button
- Adaptive Remote Start
- Universal Home Remote includes garage door opener, programmable
- Sensor, vehicle inclination- Sensor, vehicle interior movement
- Wireless Phone Charging (The system wirelessly charges one compatible mobile device. Some phones have built-in wireless charging technology and others require a special adaptor/back cover. To check for phone or other device compatibility, see my.cadillac.com/learnAbout/wireless-charging or consult your carrier.)
- Power outlet, 110-volt
- Power outlet, front auxiliary, 12-volt, located in front console (Standard with (D07) Floor console with covered storage only.)
- Defogger, rear-window- Air filter, pollutant, odor and fine dust
- Platinum interior trim leather-wrapped instrument panel, console and upper door; sueded microfiber headliner and pillars
- Console, overhead
- Ambient lighting, interior selectable for instrument panel, doors, footwell, map pocket and door pull cups

Mechanical

- Transmission, 10-speed automatic electronically controlled with overdrive, tow/haul mode and tap up/tap down shifting (Standard with (L87) 6.2L V8 engine only.)
- Tow/Haul mode selector- Hitch Guidance with Hitch View
- Suspension, Magnetic Ride Control- Brakes, 4-wheel antilock, 4-wheel disc
- Engine, 6.2L V8 with Dynamic Fuel Management Direct Injection and Variable Valve Timing, includes aluminum block construction (420 hp [313.2 kW] @ 5600 rpm, 460 lb-ft of torque [623.7 Nm] @ 4100 rpm)
- Rear axle, 3.23 ratio
- GVWR, 7600 lbs. (3447 kg) (2WD models included and only available with (LM2) 3.0L Turbo Diesel engine. Standard on 4WD models with (L87) 6.2L V8 engine.)
- Air cleaner, high-capacity- Engine air filtration monitor
- Automatic Stop/Start (Vehicles built between October, 2021 and December 12, 2021 with a V8 engine, will be forced to have (NSS) Not Equipped with Automatic Stop/Start, which removes Automatic Stop/Start, Engine control stop/start disable button and its content. Beginning with production starting December 13, 2021, (KL9) Automatic Stop/Start will be forced on as standard content. See dealer for details.)
- Engine control, stop/start system disable button (Vehicles built between October, 2021 and December 12, 2021 with a V8 engine, will be forced to have (NSS) Not Equipped with Automatic Stop/Start, which removes Automatic Stop/Start, Engine control stop/start disable button and its content. Beginning with production starting December 13, 2021, (ENL) Engine control stop/start disable button will be forced on as standard content. See dealer for details.)
- Electronic Precision Shift
- Transfer case, active, single-speed, push-button controls does not include neutral. Cannot be dinghy towed. (4WD models only. Upgradeable to (NQH) 2-speed electronic transfer case when (ZM1) Heavy-Duty Trailering Package is ordered.)
- Differential, electronic limited-slip- Four wheel drive
- Cooling, external engine oil cooler (Deleted when (LM2) 3.0L Turbo Diesel engine is ordered.)
- Cooling, external transmission oil cooler, heavy-duty air-to-oil
- Trailer brake controller, integrated
- Trailering equipment, heavy-duty includes trailering hitch platform, 7-wire harness with independent fused trailering circuits and 7-way sealed connector
- Hitch Guidance dynamic single line to aid in trailer alignment for hitching
- Smart Trailer Integration Indicator- Suspension, Air Ride Adaptive
- Steering, Electronic Power Steering (EPS)- Brake, automatic vehicle hold
- Brake lining wear indicator- Brake rotors, Duralife- Brakes, Hill Start-Assist/Hill hold
- Electric Parking Brake- Locking fuel door- Capless Fuel Fill
- Exhaust, dual with polished outlets

Parks Chevrolet, Inc.

parksdeals.com

833-825-2763

615 NC-66 South

Kernersville, NC 27284

© 2024 AutoRevo - All rights reserved. - Powered by AutoRevo