



2017 Ford F-150 XLT

Our Price \$34,054

View this vehicle on our website at parksdeals.com

Parks Chevrolet, Inc.

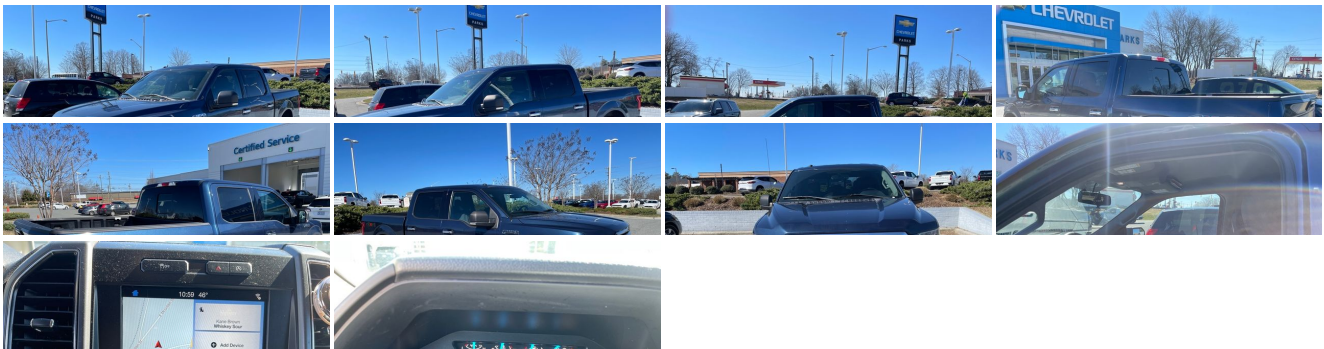
[833-825-2763](tel:833-825-2763)

615 NC-66 South, Kernersville, NC 27284

[Photos](#)

[Details](#)

[Contact](#)



Specifications:

Year:	2017
VIN:	1FTEW1EP4HFB88207
Make:	Ford

Stock:	7K5952B
Model/Trim:	F-150 XLT
Condition:	Pre-Owned
Body:	Pickup Truck
Exterior:	Blue
Engine:	ENGINE: 2.7L V6 ECOBOOST
Interior:	Medium Earth Gray Cloth
Mileage:	79,126
Drivetrain:	4 Wheel Drive
Economy:	City 18 / Highway 23

Vehicle Description

Parks Chevrolet in Kernersville, NC ! We offer low payment - easy financing on everything ! We sell in volume and that saves you money!!

2017 Blue Ford F-150 Clean CARFAX. 4WD, 10-Way Power Driver's & Passenger Seats, 110V/400W Outlet, 4.2" Productivity Screen in Instrument Cluster, Auto-Dimming Rear-View Mirror, BoxLink, Chrome Billet Style Grille w/Chrome Surround, Chrome Door & Tailgate Handles w/Body-Color Bezel, Chrome Step Bars, Class IV Trailer Hitch Receiver, Cloth 40/20/40 Front Seat, Equipment Group 302A Luxury, GVWR: 6,350 lbs Payload Package, Heated Front Seats, Leather-Wrapped Steering Wheel, LED Box Lighting, Power Glass Heated Sideview Mirrors, Power-Adjustable Pedals, Power-Sliding Rear Window, Pro Trailer Backup Assist, Radio: Single-CD w/SiriusXM Satellite, Rear Under-Seat Storage, Rear View Camera w/Dynamic Hitch Assist, Rear Window Defroster, Remote Start System, Reverse Sensing System, Single-Tip Chrome Exhaust, SYNC, SYNC 3, Trailer Tow Package, Upgraded Front Stabilizer Bar, Wheels: 18" Chrome-Like PVD, XLT Chrome Appearance Package.

\$1000 - Dealer Trade-in Allowance (Must own and trade a 2014 or newer passenger vehicle to qualify for the Dealer Trade-in Allowance), Allowance is \$1000 above True Car Cash Offer. This offer is based on the current condition of the vehicle and must be appraised at the Dealership to receive the Trade-In Allowance. \$1000 - Dealer Finance Discount (Must qualify and finance with GM Financial, not available with special financing rates or programs.) Price does not include tax, tag, and fees.

Installed Options

Interior

- Cloth 40/20/40 Front Seat -inc: 4-way adjustable driver/passenger headrests, manual driver/passenger lumbar and armrest w/storage
- Power Rear Windows
- Remote Keyless Entry w/Integrated Key Transmitter, Illuminated Entry and Panic Button
- Full Carpet Floor Covering -inc: Carpet Front And Rear Floor Mats
- Power 1st Row Windows w/Driver And Passenger 1-Touch Up/Down
- Power Door Locks w/Autolock Feature
- 4-Way Driver Seat -inc: Manual Recline and Fore/Aft Movement
- 4-Way Passenger Seat -inc: Manual Recline and Fore/Aft Movement
- 60-40 Folding Split-Bench Front Facing Fold-Up Cushion Rear Seat
- Manual Tilt/Telescoping Steering Column
- Gauges -inc: Speedometer, Odometer, Voltmeter, Oil Pressure, Engine Coolant Temp, Tachometer, Transmission Fluid Temp and Trip Odometer
- Front Cupholder- Rear Cupholder- Compass- Keypad
- Cruise Control w/Steering Wheel Controls- Manual Air Conditioning
- HVAC -inc: Underseat Ducts- Glove Box- Full Cloth Headliner
- Urethane Gear Shifter Material
- Interior Trim -inc: Metal-Look Instrument Panel Insert, Cabback Insulator and Chrome Interior Accents
- Day-Night Rearview Mirror- Driver And Passenger Visor Vanity Mirrors
- 3 12V DC Power Outlets- Fade-To-Off Interior Lighting- Front And Rear Map Lights
- Pickup Cargo Box Lights
- Instrument Panel Bin, Dashboard Storage, Driver / Passenger And Rear Door Bins and 1st Row Underseat Storage
- Delayed Accessory Power- Outside Temp Gauge- Analog Appearance
- 2 Seatback Storage Pockets- Manual Adjustable Rear Head Restraints
- Securilock Anti-Theft Ignition (pats) Engine Immobilizer- Perimeter Alarm- Air Filtration

Exterior

- Wheels: 17" Silver Painted Aluminum- Tires: P265/70R17 OWL A/T
- Full-Size Spare Tire Stored Underbody w/Crankdown
- Chrome Front Bumper w/Body-Colored Rub Strip/Fascia Accent and 2 Tow Hooks
- Black Power Side Mirrors w/Convex Spotter and Manual Folding- Deep Tinted Glass
- Tailgate/Box Door Lock Included w/Power Door Locks

Option Packages

Factory Installed Packages

ENGINE: 2.7L V6 ECOBOOST	
-inc: auto start/stop, 3.55 Axle Ratio, GVWR: 6,500 lbs Payload Package	\$995

Option Packages Total	\$995
-----------------------	-------

- Tailgate/Rear Door Lock Included w/Power Door Locks
- Auto On/Off Aero-Composite Halogen Daytime Running Lights Preference Setting Headlamps w/Delay-Off
- Regular Box Style- Steel Spare Wheel- Clearcoat Paint- Chrome Rear Step Bumper
- Black Side Windows Trim- Black Door Handles- Fixed Rear Window
- Variable Intermittent Wipers- Aluminum Panels- Chrome Grille
- Tailgate Rear Cargo Access- Cargo Lamp w/High Mount Stop Light- Front Fog Lamps
- Perimeter/Approach Lights

Safety

- Cloth 40/20/40 Front Seat -inc: 4-way adjustable driver/passenger headrests, manual driver/passenger lumbar and armrest w/storage
- Power Rear Windows
- Remote Keyless Entry w/Integrated Key Transmitter, Illuminated Entry and Panic Button
- Full Carpet Floor Covering -inc: Carpet Front And Rear Floor Mats
- Power 1st Row Windows w/Driver And Passenger 1-Touch Up/Down
- Power Door Locks w/Autolock Feature
- 4-Way Driver Seat -inc: Manual Recline and Fore/Aft Movement
- 4-Way Passenger Seat -inc: Manual Recline and Fore/Aft Movement
- 60-40 Folding Split-Bench Front Facing Fold-Up Cushion Rear Seat
- Manual Tilt/Telescoping Steering Column
- Gauges -inc: Speedometer, Odometer, Voltmeter, Oil Pressure, Engine Coolant Temp, Tachometer, Transmission Fluid Temp and Trip Odometer
- Front Cupholder- Rear Cupholder- Compass- Keypad
- Cruise Control w/Steering Wheel Controls- Manual Air Conditioning
- HVAC -inc: Underseat Ducts- Glove Box- Full Cloth Headliner
- Urethane Gear Shifter Material
- Interior Trim -inc: Metal-Look Instrument Panel Insert, Cabback Insulator and Chrome Interior Accents
- Day-Night Rearview Mirror- Driver And Passenger Visor Vanity Mirrors
- 3 12V DC Power Outlets- Fade-To-Off Interior Lighting- Front And Rear Map Lights
- Pickup Cargo Box Lights
- Instrument Panel Bin, Dashboard Storage, Driver / Passenger And Rear Door Bins and 1st Row Underseat Storage
- Delayed Accessory Power- Outside Temp Gauge- Analog Appearance
- 2 Seatback Storage Pockets- Manual Adjustable Rear Head Restraints
- Securilock Anti-Theft Ignition (pats) Engine Immobilizer- Perimeter Alarm- Air Filtration

Mechanical

- Engine: 3.5L V6 Ti-VCT FFV
- Transmission: Electronic 6-Speed Automatic -inc: tow/haul and sport mode
- 3.73 Axle Ratio- GVWR: 6,350 lbs Payload Package- Electronic Transfer Case
- Part-Time Four-Wheel Drive
- 70-Amp/Hr 610CCA Maintenance-Free Battery w/Run Down Protection
- 200 Amp Alternator- Towing Equipment -inc: Trailer Sway Control
- Trailer Wiring Harness- 1570# Maximum Payload- HD Shock Absorbers
- Front Anti-Roll Bar- Electric Power-Assist Speed-Sensing Steering- 23 Gal. Fuel Tank
- Single Stainless Steel Exhaust- Auto Locking Hubs
- Double Wishbone Front Suspension w/Coil Springs
- Leaf Rear Suspension w/Leaf Springs
- 4-Wheel Disc Brakes w/4-Wheel ABS, Front And Rear Vented Discs, Brake Assist, Hill Hold Control and Electric Parking Brake

Parks Chevrolet, Inc.

Parks Chevrolet, Inc.

View this car on our website at parksdeals.com/7065092

Website: parksdeals.com

Phone: 833-825-2763

Map: [615 NC-66 South, Kernersville, NC 27284](#)

