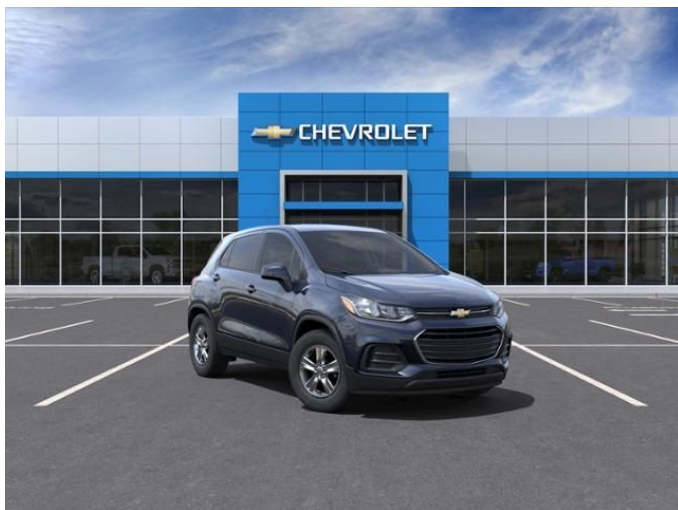


2022 Chevrolet Trax LS

View this car on our website at parksdeals.com/7065071/ebrochure



Our Price **\$23,250**

Retail Value ~~\$23,750~~

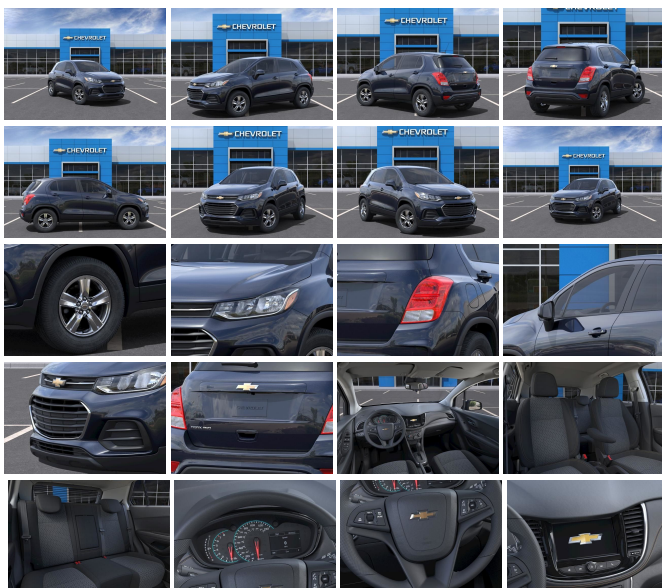
Specifications:

| | |
|--------------------|--|
| Year: | 2022 |
| VIN: | KL7CJNSM7NB515481 |
| Make: | Chevrolet |
| Stock: | 515481 |
| Model/Trim: | Trax LS |
| Condition: | New |
| Body: | SUV |
| Exterior: | Midnight Blue Metallic |
| Engine: | ENGINE, TURBO 1.4L VARIABLE VALVE TIMING DOHC 4-CYLINDER DIRECT INJECTION SIDI |
| Interior: | Black Cloth |
| Mileage: | 0 |
| Drivetrain: | All Wheel Drive |
| Economy: | City 23 / Highway 30 |

2022 Chevrolet Trax LS Midnight Blue Metallic Turbo 1.4L VVT DOHC
4-Cylinder DI SIDI AWD 6-Speed Automatic

All-Wheel Drive Chassis, Apple CarPlay/Android Auto, Deep-Tinted
Rear Glass Windows & Liftgate, Electronic Automatic Cruise Control,
Preferred Equipment Group 1LS, Tint & Cruise Package.

Contact us online at www.parkscharlotte.com or give us a call at (704)
288-0662 to have your questions answered, obtain a price quote for this
vehicle, or schedule your test drive today. Our prices cannot be beat!
Come visit us at 8530 IKEA BLVD CHARLOTTE NC. Price excludes
administrative, origination, documentary, procurement and/or other
administrative fee. You may or may not qualify for all rebates. Price
does not include tax, tag, and fees. Price does not include any
aftermarket products, bodies, or upfits. Price includes applicable
rebates:\$500 - Customer Cash. Exp. 04/04/2022



Our Location :



2022 Chevrolet Trax LS

Parks Chevrolet, Inc. - 833-825-2763 - View this car on our website at parksdeals.com/7065071/ebrochure

Installed Options

Interior

- Seats, front bucket with driver power lumbar - Seat trim, cloth
- Seat adjuster, driver 4-way manual- Seat adjuster, front passenger 2-way manual
- Map pocket, driver seatback- Map pocket, front passenger seatback
- Head restraints, 2-way adjustable (up/down), front- Armrest, driver seat
- Seat, rear 60/40 split-bench, folding
- Floor mats, color-keyed and carpeted front and rear (Deleted when (PDH) Interior Protection Package, LPO, (PDC) Protection Package, LPO, (PDA) Road Trip Package, LPO or (VAV) all-weather floor mats is ordered.)
- Steering wheel, 3-spoke, urethane- Steering column, manual tilt and telescoping
- Steering wheel controls, mounted audio and phone interface controls
- Instrumentation with analog speedometer and tachometer
- Driver Information Center 3.5" monochrome display with True White back lighting and digital readouts, including speedometer, odometer, trip odometer and fuel gauge
- Speedometer, miles/kilometers- Compass display located in the Driver Information Center
- Door locks, power programmable- Remote Keyless Entry with panic alarm
- Keys, (2) foldable
- Windows, power with driver Express-Up/Down and front passenger and rear Express-Down
- Theft-deterrent system, unauthorized entry- Air conditioning, single-zone manual
- Heater, electric Temperature sensor, outside- Air filter, particle- Heater duct, rear, floor
- Defogger, rear-window, electric
- Cup holders, 4 in front console and 2 in rear center armrest
- Power outlet, auxiliary, 12-volt- Mirror, inside rearview manual day/night
- Visors, driver and front passenger vanity mirrors, covered
- Assist handles, driver, front passenger and rear outboard includes coat hooks on rear handles
- Lighting, interior with front reading lights and dome light
- Shift knob, satin silver and chrome - Cargo storage, tray under rear floor
- Cargo tie downs, 4- Lighting, cargo area
- Chevrolet Connected Access capable (Subject to terms. See onstar.com or dealer for details)

details.)

Exterior

- Wheels, 16" (40.6 cm) aluminum- Tires, P205/70R16 all-season, blackwall
- Wheel, spare, 16" (40.6 cm) steel- Tire, compact spare
- Moldings, beltline side glass (Black.)- Moldings, Anthracite bodyside
- Headlamps, halogen reflector with automatic on/off - Tail lamps, sculpted
- Mirrors, outside power-adjustable, body-color, manual-folding with Black base
- Windshield, solar absorbing- Windshield, acoustic laminated- Glass, solar absorbing
- Wipers, front intermittent- Wiper, rear intermittent- Door handles, body-color
- Liftgate, rear applique, body-color

Safety

- Seats, front bucket with driver power lumbar - Seat trim, cloth
- Seat adjuster, driver 4-way manual- Seat adjuster, front passenger 2-way manual
- Map pocket, driver seatback- Map pocket, front passenger seatback
- Head restraints, 2-way adjustable (up/down), front- Armrest, driver seat
- Seat, rear 60/40 split-bench, folding
- Floor mats, color-keyed and carpeted front and rear (Deleted when (PDH) Interior Protection Package, LPO, (PDC) Protection Package, LPO, (PDA) Road Trip Package, LPO or (VAV) all-weather floor mats is ordered.)
- Steering wheel, 3-spoke, urethane- Steering column, manual tilt and telescoping
- Steering wheel controls, mounted audio and phone interface controls
- Instrumentation with analog speedometer and tachometer
- Driver Information Center 3.5" monochrome display with True White back lighting and digital readouts, including speedometer, odometer, trip odometer and fuel gauge
- Speedometer, miles/kilometers- Compass display located in the Driver Information Center
- Door locks, power programmable- Remote Keyless Entry with panic alarm
- Keys, (2) foldable
- Windows, power with driver Express-Up/Down and front passenger and rear Express-Down
- Theft-deterrent system, unauthorized entry- Air conditioning, single-zone manual
- Heater, electric- Temperature sensor, outside- Air filter, particle- Heater duct, rear, floor
- Defogger, rear-window, electric
- Cup holders, 4 in front console and 2 in rear center armrest
- Power outlet, auxiliary, 12-volt- Mirror, inside rearview manual day/night
- Visors, driver and front passenger vanity mirrors, covered
- Assist handles, driver, front passenger and rear outboard includes coat hooks on rear handles
- Lighting, interior with front reading lights and dome light
- Shift knob, satin silver and chrome - Cargo storage, tray under rear floor
- Cargo tie downs, 4- Lighting, cargo area
- Chevrolet Connected Access capable (Subject to terms. See onstar.com or dealer for details.)

Mechanical

- Engine, Turbo 1.4L Variable Valve Timing DOHC 4-cylinder Direct Injection SIDI (155 hp [115.6 kW] @ 5600 rpm, 177 lb-ft of torque [239 N-m] @ 2000-4000 rpm)
- Transmission, 6-speed automatic- Axle, 3.53 final drive ratio- Chassis, all-wheel drive
- Battery, 60AH- Alternator, 130 amps- Suspension, Ride and Handling
- Steering, power, non-variable ratio, electric- Brakes, 4-wheel antilock, 4-wheel disc
- Mechanical jack with tools

Option Packages

Factory Installed Packages

-
ENGINE, TURBO 1.4L VARIABLE VALVE
TIMING DOHC 4-CYLINDER DIRECT
INJECTION SIDI
(155 hp [115.6 kW] @ 5600 rpm,
177 lb-ft of torque [239 N-m]
@ 2000-4000 rpm)

Parks Chevrolet, Inc.

parksdeals.com

833-825-2763

615 NC-66 South

Kernersville, NC 27284

© 2022 AutoRevo - All rights reserved. - Powered by [AutoRevo](#)