

njtruckking.com
856-693-3181
1229 Broadway
Westville, New Jersey
08093

King of Cars and
Trucks

2017 RAM 2500 CREW 4WD POWER WAGON 6.4L V8 HEMI LOW MILES WOW

View this car on our website at njtruckking.com/7064717/ebrochure



Our Price **\$54,900**

Specifications:

Year: 2017
VIN: 3C6TR5EJ4HG611892
Make: RAM 2500 CREW 4WD
Model/Trim: POWER WAGON 6.4L V8 HEMI LOW MILES WOW
Condition: Pre-Owned
Body: Pickup Truck
Exterior: White
Engine: ENGINE: 6.4L HEAVY DUTY V8 HEMI W/MDS
Interior: Gray
Mileage: 43,999
Drivetrain: 4 Wheel Drive

2017 RAM 2500 4WD

CREW CAB

6.4L V8 HEMI GAS

AUTOMATIC TRANSMISSION

(ONLY 43,999 ORIGINAL / ACTUAL MILES)

POWER WAGON

ALL POWER OPTIONS

EXCELLENT CONDITION

NAVIGATION HEATED SEATS & MORE

WARN WINCH

TONNEAU COVER

TIRES EXCELLENT

SPRAY IN BEDLINER

HITCH PACKAGE

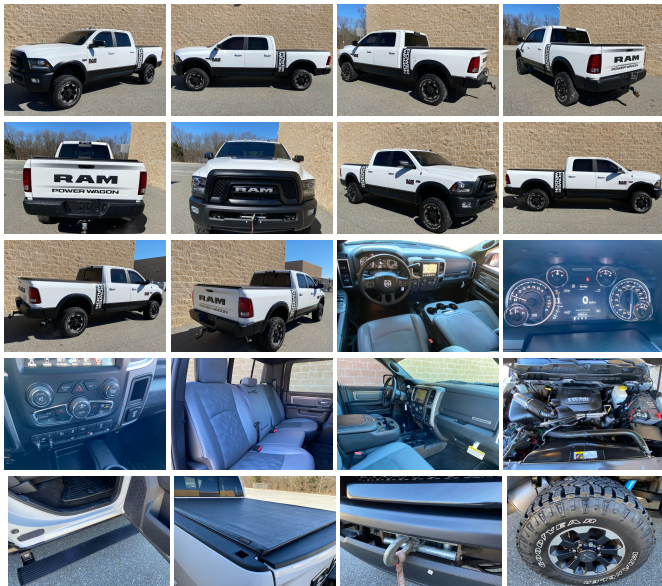
RUNS AND DRIVES EXCELLENT

EXCELLENT CONDITION

BUY IT NOW

\$54,900

CALL / TEXT ROB 856-381-6621 WITH ANY QUESTIONS



2017 RAM 2500 CREW 4WD POWER WAGON 6.4L V8 HEMI LOW MILES WOW

King of Cars and Trucks - 856-693-3181 - View this car on our website at njtruckking.com/7064717/ebrochure

Our Location :



2017 RAM 2500 CREW 4WD POWER WAGON 6.4L V8 HEMI LOW MILES WOW

King of Cars and Trucks - 856-693-3181 - View this car on our website at njtruckking.com/7064717/ebrochure

Installed Options

Interior

- 40/20/40 Split Bench Seat- Cloth Bench Seat w/Emboss Tread Pattern
- Day-Night Auto-Dimming Rearview Mirror
- Gauges -inc: Speedometer, Odometer, Voltmeter, Oil Pressure, Engine Coolant Temp, Tachometer, Oil Temperature, Transmission Fluid Temp, Engine Hour Meter, Trip Odometer and Trip Computer
- Manual Air Conditioning- Passenger Visor Vanity Mirror
- Power 1st Row Windows w/Driver And Passenger 1-Touch Up/Down
- Power Door Locks w/Autolock Feature- Power Rear Windows
- Remote Keyless Entry w/Integrated Key Transmitter, Illuminated Entry and Panic Button
- Trip Computer- 2 12V DC Power Outlets
- 4-Way Driver Seat -inc: Manual Recline and Fore/Aft Movement
- 4-Way Passenger Seat -inc: Manual Recline and Fore/Aft Movement
- Analog Appearance- Cargo Area Concealed Storage- Compass
- Cruise Control w/Steering Wheel Controls- Delayed Accessory Power
- Fade-To-Off Interior Lighting- Folding Flat Load Floor Storage
- Front Center Armrest w/Storage and Rear Center Armrest- Front Cupholder
- Front Facing Cloth Rear Seat- Front Map Lights
- Full Carpet Floor Covering -inc: Vinyl/Rubber Front And Rear Floor Mats
- Full Cloth Headliner- Glove Box- HVAC -inc: Underseat Ducts and Console Ducts
- Instrument Panel Bin, Dashboard Storage, Driver / Passenger And Rear Door Bins and 2nd Row Underseat Storage
- Interior Trim -inc: Metal-Look Instrument Panel Insert, Metal-Look Door Panel Insert and Chrome/Metal-Look Interior Accents
- Leather Steering Wheel
- Manual Adjustable Front Head Restraints and Manual Adjustable Rear Head Restraints
- Manual Tilt Steering Column- Outside Temp Gauge
- Partial Floor Console w/Storage, Mini Overhead Console and 2 12V DC Power Outlets
- Pickup Cargo Box Lights- Rear 60/40 Split Folding Seat- Rear Cupholder
- Redundant Digital Speedometer- Seats w/Cloth Back Material

Option Packages

Factory Installed Packages

ENGINE: 6.4L HEAVY DUTY V8 HEMI W/MDS

- Sentry Key Engine Immobilizer- Systems Monitor- Urethane Gear Shifter Material
- Valet Function- Vinyl Door Trim Insert

Exterior

- Manual Tailgate/Rear Door Lock- Power Heated Side Mirrors w/Manual Folding
- Variable Intermittent Wipers- 8" Forged Aluminum Wheels w/Hub Covers- At Tires
- Auto On/Off Projector Beam Halogen Headlamps w/Delay-Off- Black Exterior Mirrors
- Black Fender Flares- Black Front Bumper w/2 Tow Hooks- Black Grille
- Black Rear Step Bumper- Black Side Windows Trim and Black Front Windshield Trim
- Body-Colored Door Handles- Cab Clearance Lights
- Cargo Lamp w/High Mount Stop Light- Clearcoat Paint w/Badging- Deep Tinted Glass
- Front Fog Lamps- Front License Plate Bracket
- Full-Size Spare Tire Stored Underbody w/Crankdown- Fully Galvanized Steel Panels
- LED Brakelights- Power Rear Window- Regular Box Style- Steel Spare Wheel
- Tailgate Rear Cargo Access- Tires: LT285/70R17D OWL AT
- Vendor Painted Cargo Box Tracking- Wheels: 17" x 8.0" Aluminum w/Matte Black Pocket

Safety

- 40/20/40 Split Bench Seat- Cloth Bench Seat w/Emboss Tread Pattern
- Day-Night Auto-Dimming Rearview Mirror
- Gauges -inc: Speedometer, Odometer, Voltmeter, Oil Pressure, Engine Coolant Temp, Tachometer, Oil Temperature, Transmission Fluid Temp, Engine Hour Meter, Trip Odometer and Trip Computer
- Manual Air Conditioning- Passenger Visor Vanity Mirror
- Power 1st Row Windows w/Driver And Passenger 1-Touch Up/Down
- Power Door Locks w/Autolock Feature- Power Rear Windows
- Remote Keyless Entry w/Integrated Key Transmitter, Illuminated Entry and Panic Button
- Trip Computer- 2 12V DC Power Outlets
- 4-Way Driver Seat -inc: Manual Recline and Fore/Aft Movement
- 4-Way Passenger Seat -inc: Manual Recline and Fore/Aft Movement
- Analog Appearance- Cargo Area Concealed Storage- Compass
- Cruise Control w/Steering Wheel Controls- Delayed Accessory Power
- Fade-To-Off Interior Lighting- Folding Flat Load Floor Storage
- Front Center Armrest w/Storage and Rear Center Armrest- Front Cupholder
- Front Facing Cloth Rear Seat- Front Map Lights
- Full Carpet Floor Covering -inc: Vinyl/Rubber Front And Rear Floor Mats
- Full Cloth Headliner- Glove Box- HVAC -inc: Underseat Ducts and Console Ducts
- Instrument Panel Bin, Dashboard Storage, Driver / Passenger And Rear Door Bins and 2nd Row Underseat Storage
- Interior Trim -inc: Metal-Look Instrument Panel Insert, Metal-Look Door Panel Insert and Chrome/Metal-Look Interior Accents
- Leather Steering Wheel
- Manual Adjustable Front Head Restraints and Manual Adjustable Rear Head Restraints
- Manual Tilt Steering Column- Outside Temp Gauge
- Partial Floor Console w/Storage, Mini Overhead Console and 2 12V DC Power Outlets
- Pickup Cargo Box Lights- Rear 60/40 Split Folding Seat- Rear Cupholder
- Redundant Digital Speedometer- Seats w/Cloth Back Material
- Sentry Key Engine Immobilizer- Systems Monitor- Urethane Gear Shifter Material
- Valet Function- Vinyl Door Trim Insert

Mechanical

- Driver Selectable Front Locking Differential- Driver Selectable Rear Locking Differential
 - Mechanical Limited Slip Differential
 - Transmission w/Driver Selectable Mode, Sequential Shift Control and Oil Cooler
 - Transmission: 6-Speed Automatic (66RFE)- 1470# Maximum Payload
 - 180 Amp Alternator- 2 Skid Plates- 31 Gal. Fuel Tank
 - 4-Wheel Disc Brakes w/4-Wheel ABS, Front And Rear Vented Discs, Brake Assist, Hill Descent Control and Hill Hold Control
 - 4.10 Axle Ratio- 50 State Emissions
 - 730CCA Maintenance-Free Battery w/Run Down Protection
 - Articulink Multi-Link Front Suspension w/Coil Springs- Auto Locking Hubs
 - Bilstein Brand Name Shock Absorbers- Block Heater
 - Class V Towing Equipment -inc: Hitch, Brake Controller and Trailer Sway Control
 - Engine Oil Cooler- Engine: 6.4L Heavy Duty V8 HEMI w/MDS- GVWR: 8,510 lbs
 - Hydraulic Power-Assist Steering- Manual Transfer Case
 - Multi-Link Rear Suspension w/Coil Springs- Off-Road Suspension
 - Part-Time Four-Wheel Drive- Single Stainless Steel Exhaust
 - SmartBar Front Active w/Driver Control Anti-Roll Bar- Trailer Wiring Harness
-

King of Cars and Trucks

njtrucking.com

856-693-3181

1229 Broadway

Westville, New Jersey 08093

© 2024 AutoRevo - All rights reserved. - Powered by [AutoRevo](#)