



2010 Chevrolet Camaro 2LT w/ RS Package!

Website Price \$14,995

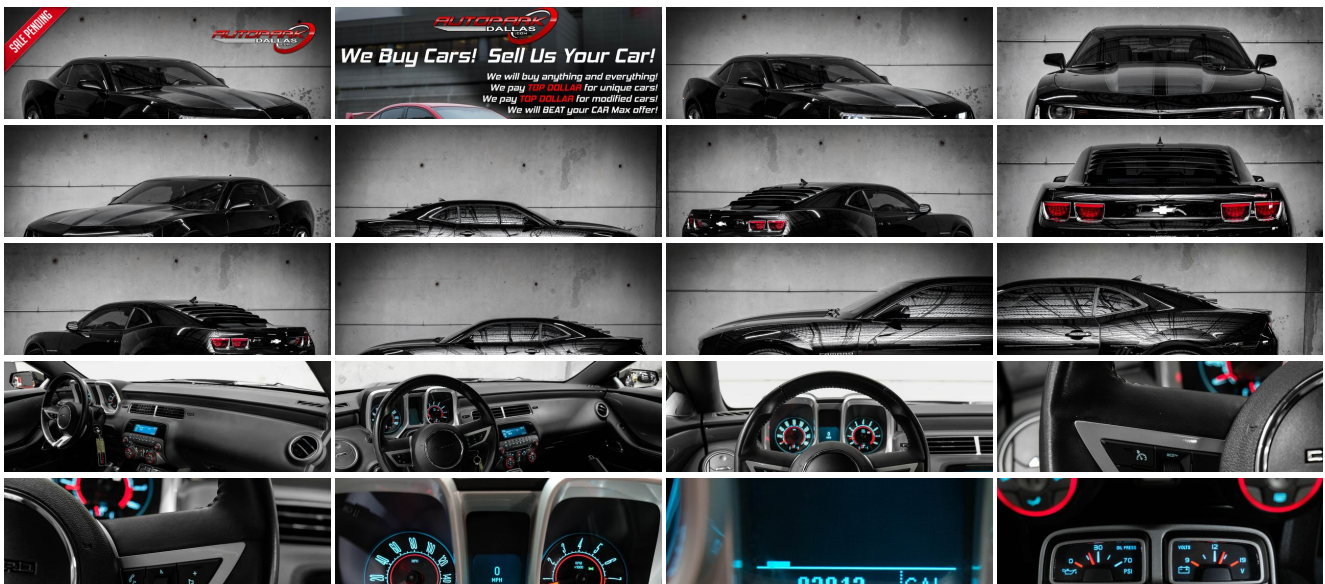
View this vehicle on our website at autoparkdallas.com



(214) 945-2601

2061 S Stemmons Fwy , Lewisville, TX 75067

- Photos
- Details
- Contact



Specifications:

Year:	2010
VIN:	2G1FG1EV5A9161301
Make:	Chevrolet
Model/Trim:	Camaro 2LT w/ RS Package!
Condition:	Pre-Owned
Body:	Coupe
Exterior:	Black
Engine:	ENGINE, 3.6L VARIABLE VALVE TIMING V6 WITH SIDI (SPARK IGNITION DIRECT INJECTION)
Interior:	Black Leather
Transmission:	TRANSMISSION, 6-SPEED MANUAL
Mileage:	93,812
Drivetrain:	Rear Wheel Drive
Economy:	City 17 / Highway 29

Vehicle Description

AutoPark Dallas is thrilled to offer you this Solid Black 2010 Chevrolet Camaro 2LT for sale! A clean example of a Camaro that has just the right amount of eye-appeal that you'll effectively snap some necks as you fly by! Even better are the few additional aftermarket add-ons that just overall help this Camaro look and feel better, but what really is the icing on the cake is that manual transmission! DO! NOT! HESITATE!!! To come swing by to check out this Camaro 2LT parked here in our indoor 16,000 Sq Ft Showroom located in Dallas , Texas amongst our inventory of 100+ other Performance / Modified and Luxury vehicles!

2010 Chevrolet Camaro 2LT

* 2 Previous Owners !*

* Clean CarFax !*

* 2 Set of Keys !*

* RS Package !*

MODIFICATIONS!

VaraRam VR Ram Intake

Camaro Red Caliper Covers

Front Billet Grille Kit w/o Emblem

Rear Window Louvers

Aftermarket Shift Knob

Windows Tinted

STOCK!

Black Exterior

Black Leather Interior

Bluetooth

Heated Front Row Seats

Rear Reverse Sensors

Single-Zone Air Conditioning

Cruise Control
Daytime Running Lights
Steering Wheel Mounted Controls
3.6L VVT SIDI V6 Engine
6-Speed Manual Transmission
Rear Wheel Drive
Professionally Detailed!
Well Maintained!
*** Free CarFax Report !***
AND SO MUCH MORE!!!

Financing is available!

Check out our Payment Calculator to get an estimate on your monthly payments!

OR

Get pre-approved in no time by filling out a credit application on the 'Finance' section of our website!

We also offer MANY different Extended Warranty options!

Check out our Google Reviews by ***Clicking*** this LINK!

Referrals and Testimonials is what our business is built on!

The team here at AutoPark Dallas, is dedicated to offering a level of customer service not usually found in the automobile industry. Thanks to years of extensive car buying / selling experience, we pursue quality used and new vehicles that are hand-picked from factory sources. Our love for automobiles and dislike of traditional dealership tactics is what motivates us to provide the service we do! The pride we take in continuing this service long after the vehicle has been delivered is what we strive for! Looking forward to making every effort to see that our customer is completely satisfied and a friend for life!

Pre-purchase inspections are always welcomed!

We also offer airport pick-up, competitive financing options, free CarFax Reports, Car Shipping nationwide, Extended Warranty plans, and so much more!

Trade-In(s) are always accepted or sell us your used car (MODIFIED OR NOT)! Please call or text for more information about Trade-Ins or selling your car to us @ (214) 945-2601!

#(214) 945-2601

Call or Text **Anytime!**

Se habla Español

WE BUY CARS!

WWW.AUTOPARKDALLAS.COM

Installed Options

Interior

- Air conditioning, single-zone manual- Air filtration system with pollen filter
- Cargo convenience net- Coat hooks, driver- and passenger-side rear
- Compass, located in Driver Information Center- Console, floor, with armrest
- Cruise control, electronic with set and resume speed, steering wheel mounted
- Cup holders, 2 front- Dead pedal, driver- Defogger, rear-window, electric
- Door locks, power programmable with lockout protection- Floor mats, carpeted front
- Gauges, auxiliary, multi-function includes 4 gauges: oil pressure, battery voltage, oil temperature and transmission fluid temperature, mounted on center console forward of shifter
- Glovebox, lockable
- Instrumentation, analog with Driver Information Center display, includes speedometer, tachometer, fuel gauge and engine temperature gauge
- Lighting, front reading lamps
- Lighting, interior dome with illuminated entry and theater dimming
- Map pockets, front doors- Mirror, inside rearview autodimming
- Power outlets, 2 auxiliary 1 located in center console storage area and 1 located at front of center console
- Remote Keyless Entry
- Seat adjuster, driver, 6-way power (fore/aft, up/down, tilt) with power recliner
- Seat adjuster, front passenger 2-way manual (fore/aft) with power recliner
- Seat trim, leather-appointed front seats- Seats, heated driver and front passenger
- Shift knob, leather-wrapped- Steering column, manual rake and telescopic
- Steering wheel, 3-spoke leather-wrapped- Theft-deterrent system, PASS-Key III
- Trunk release, remote, located on driver-side
- Universal Home Remote includes garage door opener, 3-channel programmable
- Visors, driver and front passenger vanity mirrors, covered
- Windows, power with driver and passenger Express-Down/Up

Exterior

- Tires, P245/50R19 touring, blackwall, all-season- Door handles, body-color
- Fascias, front and rear body-color with front grille and rear diffuser
- Fog lamps (When (WRS) RS Package is ordered, fog lamps act as Daytime Running Lamps.)
- Headlamps, halogen composite with automatic exterior lamp control
- Hood blanket with debossed Chevrolet bowtie
- Mirrors, outside heated power-adjustable and driver-side auto-dimming, body-color
- Molding, Black roof ditch- Moldings, body-color lower rocker
- Tire sealant and inflator kit in place of spare tire
- Wheels, 19" (48.3 cm) painted aluminum- Wipers, front intermittent

Safety

- Air conditioning, single-zone manual- Air filtration system with pollen filter
- Cargo convenience net- Coat hooks, driver- and passenger-side rear
- Compass, located in Driver Information Center- Console, floor, with armrest
- Cruise control, electronic with set and resume speed, steering wheel mounted
- Cup holders, 2 front- Dead pedal, driver- Defogger, rear-window, electric
- Door locks, power programmable with lockout protection- Floor mats, carpeted front
- Gauges, auxiliary, multi-function includes 4 gauges: oil pressure, battery voltage, oil temperature and transmission fluid temperature, mounted on center console forward of shifter
- Glovebox, lockable
- Instrumentation, analog with Driver Information Center display, includes speedometer, tachometer, fuel gauge and engine temperature gauge
- Lighting, front reading lamps
- Lighting, interior dome with illuminated entry and theater dimming
- Map pockets, front doors- Mirror, inside rearview autodimming
- Power outlets, 2 auxiliary 1 located in center console storage area and 1 located at front of center console
- Remote Keyless Entry
- Seat adjuster, driver, 6-way power (fore/aft, up/down, tilt) with power recliner
- Seat adjuster, front passenger 2-way manual (fore/aft) with power recliner
- Seat trim, leather-appointed front seats- Seats, heated driver and front passenger
- Shift knob, leather-wrapped- Steering column, manual rake and telescopic
- Steering wheel, 3-spoke leather-wrapped- Theft-deterrent system, PASS-Key III
- Trunk release, remote, located on driver-side

Option Packages

Factory Installed Packages

ENGINE, 3.6L VARIABLE VALVE TIMING V6 WITH SIDI (SPARK IGNITION DIRECT INJECTION)

(304 hp [226.7 kW] @ 6400 rpm, 273 lb-ft of torque [368.6 N-m] @ 5200 rpm)

TRANSMISSION, 6-SPEED MANUAL

CYBER GRAY METALLIC STRIPE PACKAGE

\$470

RS PACKAGE

includes (Q9K) 20" x 8" front and 20" x 9" rear flangeless, painted aluminum wheels with midnight silver finish, (BD8) body-color roof ditch molding, (T4F) high intensity discharge headlamps and RS unique tail lamps

\$1,500

EMISSIONS, FEDERAL REQUIREMENTS

BLACK

STANDARD PAINT

PREFERRED EQUIPMENT GROUP

includes Standard Equipment

AUDIO SYSTEM, AM/FM STEREO WITH CD-ROM AND MP3 PLAYBACK

music navigator, Graphic Information Display (GiD) and auxiliary input jack, includes outside temperature display

BLACK, LEATHER-APPOINTED FRONT SEATS

SEATS, FRONT SPORT BUCKET

includes adjustable head restraints and folding rear seat with trunk pass-through

WHEELS, 20" X 8" (50.8 CM X 20.3 CM) FRONT AND 20" X 9" (50.8 CM X 22.9 CM) REAR POLISHED ALUMINUM

\$470

Option Packages Total

\$2,440

- Universal Home Remote includes garage door opener, 3-channel programmable
- Visors, driver and front passenger vanity mirrors, covered
- Windows, power with driver and passenger Express-Down/Up

Mechanical

- Alternator, 150 amps- Axle, 3.27 ratio
- Battery, maintenance-free with rundown protection and retained accessory power
- Brakes, 4-wheel antilock, 4-wheel disc (Single piston front brakes with super corner rear brakes.)
- Engine, 3.6L Variable Valve Timing V6 with SIDI (Spark Ignition Direct Injection) (304 hp [226.7 kW] @ 6400 rpm, 273 lb-ft of torque [368.6 N-m] @ 5200 rpm)
- Exhaust, dual-outlet stainless-steel with polished tips - Rear wheel drive
- Steering, power, variable ratio- Suspension, Sport- Transmission, 6-speed manual

AUTOPARK

Dallas

Auto Park Dallas

View this car on our website at autoparkdallas.com/7064672

Website: autoparkdallas.com

Phone: (214) 945-2601

Map: [2061 S Stemmons Fwy, Lewisville, TX 75067](#)

