



## 2019 Chevrolet Equinox LT

**Our Price \$25,640**

View this vehicle on our website at [parksdeals.com](https://www.parksdeals.com)

Parks Chevrolet, Inc.

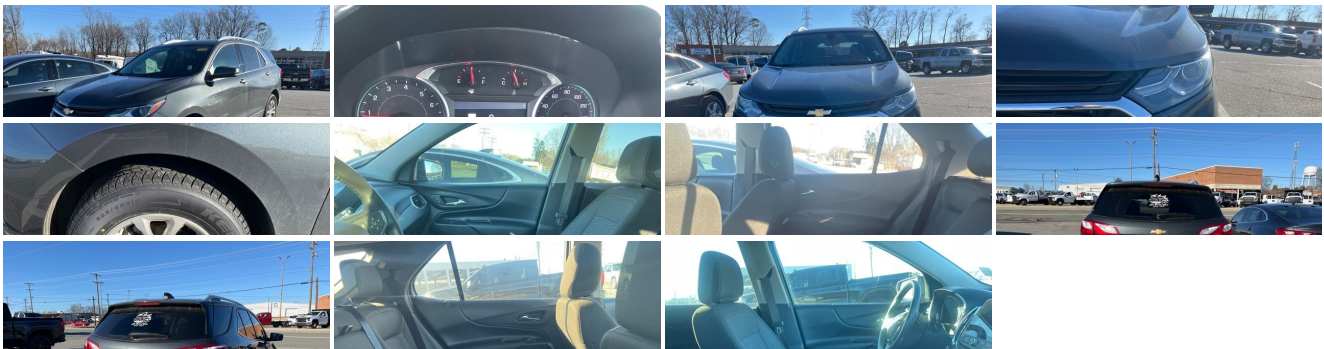
[833-825-2763](tel:833-825-2763)

615 NC-66 South, Kernersville, NC 27284

[Photos](#)

[Details](#)

[Contact](#)



### Specifications:

<b>Year:</b>	2019
<b>VIN:</b>	3GNAXKEV6KS563248
<b>Make:</b>	Chevrolet

<b>Stock:</b>	108915A
<b>Model/Trim:</b>	Equinox LT
<b>Condition:</b>	Pre-Owned
<b>Body:</b>	SUV
<b>Exterior:</b>	Nightfall Gray Metallic
<b>Engine:</b>	ENGINE, 1.5L TURBO DOHC 4-CYLINDER, SIDI, VVT
<b>Interior:</b>	Jet Black Cloth
<b>Mileage:</b>	45,457
<b>Drivetrain:</b>	Front Wheel Drive
<b>Economy:</b>	City 26 / Highway 32

## Vehicle Description

Certified. Chevrolet Certified Pre-Owned Details:

- \* Warranty Deductible: \$0
- \* Powertrain Limited Warranty: 72 Month/100,000 Mile (whichever comes first) from original in-service date
- \* 24 months/24,000 miles (whichever comes first) CPO Scheduled Maintenance Plan and 3 days/150 miles (whichever comes first) Vehicle Exchange Program. SiriusXM 3-month trial subscription.
- \* Transferable Warranty
- \* Vehicle History
- \* Roadside Assistance
- \* 172 Point Inspection
- \* Limited Warranty: 12 Month/12,000 Mile (whichever comes first) from certified purchase date

Parks Chevrolet in Kernersville, NC ! We offer low payment - easy financing on everything ! We sell in volume and that saves you money!!

2019 Nightfall Gray Metallic Chevrolet Equinox CARFAX One-Owner. Backup Camera, Remote Start, Remaining Factory Warranty, 120-Volt Power Outlet, 2 USB Data Ports, 2 USB Data Ports w/SD Card Reader, 3-Spoke Leather-Wrapped Steering Wheel, 8-Way Power Driver Seat Adjuster, Alloy wheels, Confidence & Convenience Package, Driver Confidence Package, Driver Convenience Package, Dual Zone Automatic Climate Control, HD Rear Vision Camera, Heated Driver & Front Passenger Seats, Infotainment Package, Lane Change Alert w/Side Blind Zone Alert, Leather-Wrapped Shift Lever, Outside Heated Power-Adjustable Mirrors, Power Sunroof, Preferred Equipment Group 1LT, Radio: Chevrolet Infotainment 3 Plus System w/Navi, Rear Cross Traffic Alert, Rear Park Assist w/Audible Warning, Rear Power Liftgate, Remote Vehicle Starter System, Roof-Mounted Luggage Rack Side Rails, Sun & Navigation Package (DISC), Universal Home Remote.

\$1000 - Dealer Trade-in Allowance (Must own and trade a 2014 or newer passenger vehicle to qualify for the Dealer Trade-in Allowance), Allowance is \$1000 above True Car Cash Offer. This offer is based on the current condition of the vehicle and must be appraised at the Dealership to receive the Trade-In Allowance. \$1000 - Dealer Finance Discount (Must qualify and finance with GM Financial, not available with special financing rates or programs.) Price does not include tax, tag, and fees.

### Installed Options

#### Interior

- Seats, front bucket- Seat adjuster, driver 8-way power with 2-way power lumbar
- Seat adjuster, 2-way power driver lumbar control- Floor mats, carpeted front
- Floor mats, carpeted rear- Window, power with driver Express-Up and Down
- Window, power with front passenger Express-Down
- Windows, power, rear with Express-Down- Door locks, power with lock-out protection
- Keyless Open, includes extended range Remote Keyless Entry
- Theft-deterrent system, unauthorized entry- Remote panic alarm
- Air conditioning, semi-automatic, single-zone
- USB ports, 2, with auxiliary input jack, located in front center stack storage area
- USB charging-only ports, 2, located in the rear of the floor console
- Seat adjuster, front passenger 4-way manual
- Seat, rear split-folding with center armrest
- Head restraints, 2-way adjustable (up/down), front
- Seat release levers, 2nd row mechanical release levers in cargo area
- Steering wheel, 3-spoke, deluxe- Steering column, tilt and telescoping
- Steering wheel controls, audio, phone interface and driver information center controls
- Speedometer, miles/kilometers
- Display, driver instrument information enhanced, multi-color- Keyless Start, push-button
- Cruise control, electronic with set and resume speed - Defogger, rear-window electric
- Power outlet, front auxiliary, 12-volt- Mirror, inside rearview manual day/night
- Sunglass storage, overhead

### Option Packages

#### Factory Installed Packages

---

ENGINE, 1.5L TURBO DOHC 4-CYLINDER, SIDI, VVT  
(170 hp [127.0 kW] @ 5600 rpm, 203 lb-ft of  
torque [275.0 N-m] @ 2000 - 4000 rpm)

- Visors, driver and front passenger illuminated vanity mirrors, covered
- Assist handle, driver- Assist handle, front passenger- Assist handles, rear outboard
- Map pocket, driver seatback- Map pocket, front passenger seatback
- Shift lever, urethane- Power outlet, cargo area auxiliary, 12-volt

## Exterior

- Wheels, 17" (43.2 cm) aluminum- Tires, P225/65R17 all-season blackwall (FWD only.)
- Mirrors, outside heated power-adjustable, manual-folding
- Wheel, spare, 16" (40.6 cm) steel- Tire, compact spare, T135/70R16 blackwall
- Luggage carrier provisions, roof-mounted- Trim, Bright lower window
- Active aero shutters- Headlamps, high intensity discharge
- Headlamp control, automatic on and off with automatic delay
- Glass, acoustic, laminated windshield- Glass, deep-tinted, rear- Mirror caps, body-color
- Liftgate, rear manual- Door handles, body-color

## Safety

- Seats, front bucket- Seat adjuster, driver 8-way power with 2-way power lumbar
- Seat adjuster, 2-way power driver lumbar control- Floor mats, carpeted front
- Floor mats, carpeted rear- Window, power with driver Express-Up and Down
- Window, power with front passenger Express-Down
- Windows, power, rear with Express-Down- Door locks, power with lock-out protection
- Keyless Open, includes extended range Remote Keyless Entry
- Theft-deterrent system, unauthorized entry- Remote panic alarm
- Air conditioning, semi-automatic, single-zone
- USB ports, 2, with auxiliary input jack, located in front center stack storage area
- USB charging-only ports, 2, located in the rear of the floor console
- Seat adjuster, front passenger 4-way manual
- Seat, rear split-folding with center armrest
- Head restraints, 2-way adjustable (up/down), front
- Seat release levers, 2nd row mechanical release levers in cargo area
- Steering wheel, 3-spoke, deluxe- Steering column, tilt and telescoping
- Steering wheel controls, audio, phone interface and driver information center controls
- Speedometer, miles/kilometers
- Display, driver instrument information enhanced, multi-color- Keyless Start, push-button
- Cruise control, electronic with set and resume speed - Defogger, rear-window electric
- Power outlet, front auxiliary, 12-volt- Mirror, inside rearview manual day/night
- Sunglass storage, overhead
- Visors, driver and front passenger illuminated vanity mirrors, covered
- Assist handle, driver- Assist handle, front passenger- Assist handles, rear outboard
- Map pocket, driver seatback- Map pocket, front passenger seatback
- Shift lever, urethane- Power outlet, cargo area auxiliary, 12-volt

## Mechanical

- Transmission, 6-speed automatic, electronically-controlled with overdrive includes Driver Shift Control
- Fuel, gasoline, E15- Driver Shift Controls
- Engine, 1.5L Turbo DOHC 4-cylinder, SIDI, VVT (170 hp [127.0 kW] @ 5600 rpm, 203 lb-ft of torque [275.0 N-m] @ 2000 - 4000 rpm)
- Axle, 3.50 final drive ratio (FWD only.)- GVWR, 4464 lbs. (2025 kg)
- Engine control, stop-start system- Front-wheel drive
- Suspension, front MacPherson strut- Suspension, rear 4-link
- Brakes, 4-wheel antilock, 4-wheel disc 16" front and rear - Brake, electronic parking
- Brake lining, high-performance, noise and dust performance- Exhaust, single outlet
- Mechanical jack with tools

Parks Chevrolet, Inc.

Parks Chevrolet, Inc.

View this car on our website at [parksdeals.com/7064294](https://parksdeals.com/7064294)

Website: [parksdeals.com](https://parksdeals.com)

Phone: [833-825-2763](tel:833-825-2763)

Map: [615 NC-66 South, Kernersville, NC 27284](#)

