

NEW CAR TRADE IN



2019 Chevrolet Silverado 1500 Custom

Our Price \$38,911

View this vehicle on our website at parksdeals.com

Parks Chevrolet, Inc.

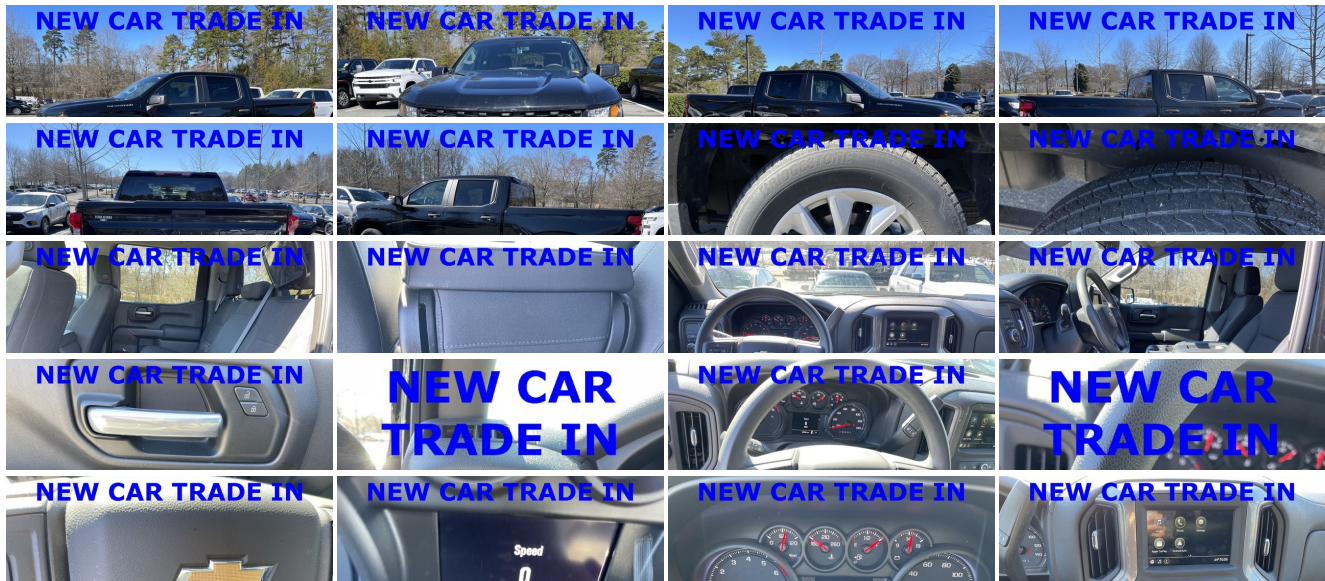
833-825-2763

615 NC-66 South, Kernersville, NC 27284

Photos

Details

Contact



Specifications:

Year:	2019
VIN:	3GCPWBEHXKG147173
Make:	Chevrolet
Stock:	101858B
Model/Trim:	Silverado 1500 Custom
Condition:	Pre-Owned
Body:	Pickup Truck
Exterior:	Black
Engine:	ENGINE, 4.3L ECOTEC3 V6
Interior:	Black Cloth
Mileage:	27,840
Drivetrain:	Rear Wheel Drive
Economy:	City 16 / Highway 21

Vehicle Description

2019 Chevrolet Silverado 1500 Custom 6-Speed Automatic Electronic with Overdrive, Black Cloth, We Deliver. CARFAX One-Owner. Odometer is 9621 miles below market average!

\$1000 - Dealer Trade-in Allowance (Must own and trade a 2015 or newer passenger vehicle to qualify for the Dealer Trade-in Allowance), Allowance is \$1000 above True Car Cash Offer. This offer is based on the current condition of the vehicle and must be appraised at the Dealership to receive the Trade-In Allowance. \$1000 is reflected in the vehicle discount. \$1000 - Dealer Finance Discount (Must qualify and finance with GM Financial, not available with special financing rates or programs.) You may or may not qualify for all rebates. Price does not include tax, tag, and fees. Price does not include any aftermarket products, bodies, or upfits. Price includes applicable rebates: Contact us online at www.parkschevrolethuntersville.com or give us a call at (704) 875-6558 to have your questions answered, obtain a price quote for this vehicle, or schedule your test drive today. Our prices cannot be beat! Come visit us at 15235 STATESVILLE ROAD HUNTERSVILLE NC 28078.

Installed Options

Interior

- Seats, front 40/20/40 split-bench - Seat trim, Cloth
- Seat, rear 60/40 folding bench (folds up), 3-passenger (includes child seat top tether anchor)
- Floor mats, rubberized vinyl, front (Deleted when LPO floor liners are ordered.)
- Floor mats, rubberized vinyl rear (Deleted when LPO floor liners are ordered.)
- Window, power front, passenger express down- Windows, power rear, express down
- Door locks, power- Remote Keyless Entry, with 2 transmitters
- Air conditioning, single-zone- Air vents, rear, heating/cooling
- Seat adjuster, driver 4-way manual- Seat adjuster, passenger 4-way manual
- Floor covering, color-keyed carpeting- Steering wheel, urethane
- Steering column, Tilt-Wheel, manual with wheel locking security feature
- Instrument cluster, 6-gauge cluster featuring speedometer, fuel level, engine temperature, tachometer, voltage and oil pressure
- Driver Information Center, 3.5" diagonal monochromatic display
- Exterior Temperature Display located in radio display- Rear Seat Reminder
- Window, power front, drivers express up/down
- Cruise control, electronic with set and resume speed, steering wheel-mounted
- Power outlet, front auxiliary, 12-volt- Mirror, inside rearview, manual tilt
- Assist handles front A-pillar mounted for driver and passenger, rear B-pillar mounted

Exterior

- Wheels, 20" x 9" (50.8 cm x 22.9 cm) silver painted aluminum
- Tires, 275/60R20 all-season, blackwall- Tire, spare 255/80R17SL all-season, blackwall
- Recovery hooks, front, frame-mounted, black
- Headlamps, halogen reflector with halogen Daytime Running Lamps
- Tire carrier lock, keyed cylinder lock that utilizes same key as ignition and door
- Bumper, front (Body-color.)- Bumper, rear (Body-color.)- CornerStep, rear bumper
- Cargo tie downs (12), fixed rated at 500 lbs per corner
- Grille (Body color bars with black mesh inserts.)
- Lamps, cargo area, cab mounted integrated with center high mount stop lamp, with switch

Option Packages

Factory Installed Packages

ENGINE, 4.3L ECOTEC3 V6
(285 hp [212 kW] @ 5300 rpm, 305 lb-ft of
torque [413 Nm] @ 3900 rpm)

in bank on left side of steering wheel

- Taillamps, LED with signature- Mirrors, outside heated power-adjustable
- Glass, deep-tinted- Door handles, Black- Tailgate and bed rail protection cap, top
- Tailgate, locking utilizes same key as ignition and door (Upgraded to (QT5) EZ Lift power lock and release tailgate when (PCX) Custom Convenience Package is ordered.)
- Tailgate, gate function manual, no lift assist
- LPO, Polished exhaust tip (dealer-installed) (Standard with 4.3L EcoTec3 V6 engine. Not available with (L82) 5.3L EcoTec3 V8 engine.)

Safety

- Seats, front 40/20/40 split-bench - Seat trim, Cloth
- Seat, rear 60/40 folding bench (folds up), 3-passenger (includes child seat top tether anchor)
- Floor mats, rubberized vinyl, front (Deleted when LPO floor liners are ordered.)
- Floor mats, rubberized vinyl rear (Deleted when LPO floor liners are ordered.)
- Window, power front, passenger express down- Windows, power rear, express down
- Door locks, power- Remote Keyless Entry, with 2 transmitters
- Air conditioning, single-zone- Air vents, rear, heating/cooling
- Seat adjuster, driver 4-way manual- Seat adjuster, passenger 4-way manual
- Floor covering, color-keyed carpeting- Steering wheel, urethane
- Steering column, Tilt-Wheel, manual with wheel locking security feature
- Instrument cluster, 6-gauge cluster featuring speedometer, fuel level, engine temperature, tachometer, voltage and oil pressure
- Driver Information Center, 3.5" diagonal monochromatic display
- Exterior Temperature Display located in radio display - Rear Seat Reminder
- Window, power front, drivers express up/down
- Cruise control, electronic with set and resume speed, steering wheel-mounted
- Power outlet, front auxiliary, 12-volt- Mirror, inside rearview, manual tilt
- Assist handles front A-pillar mounted for driver and passenger, rear B-pillar mounted

Mechanical

- Transmission, 6-speed automatic, electronically controlled
- Engine, 4.3L EcoTec3 V6 (285 hp [212 kW] @ 5300 rpm, 305 lb-ft of torque [413 Nm] @ 3900 rpm)
- Rear axle, 3.42 ratio- Durabed, pickup bed
- GVWR, 6800 lbs. (3084 kg) (Requires 2WD model with (LV3) 4.3L EcoTec3 V6 engine or 2WD Double Cab model and (L82) 5.3L EcoTec3 V8 engine.)
- Rear wheel drive- Cooling, external engine oil cooler
- Battery, heavy-duty 730 cold-cranking amps/70 Amp-hr, maintenance-free with rundown protection and retained accessory power (Included and only available with (LV3) 4.3L EcoTec3 V6 engine.)
- Alternator, 170 amps- Frame, fully-boxed, hydroformed front section
- Steering, Electric Power Steering (EPS) assist, rack-and-pinion
- Brakes, 4-wheel antilock, 4-wheel disc with DURALIFE rotors
- Brake lining wear indicator- Capless Fuel Fill
- Exhaust, single outlet (Requires (LV3) 4.3L EcoTec3 V6 engine. Includes (VQZ) polished exhaust tip, LPO.)

Parks Chevrolet, Inc.

Parks Chevrolet, Inc.

View this car on our website at parksdeals.com/7064282

Website: parksdeals.com

Phone: 833-825-2763

Map: [615 NC-66 South, Kernersville, NC 27284](#)

