

2016 Chevrolet Sonic LS

Our Price \$8,299

View this vehicle on our website at parksdeals.com

Parks Chevrolet, Inc.

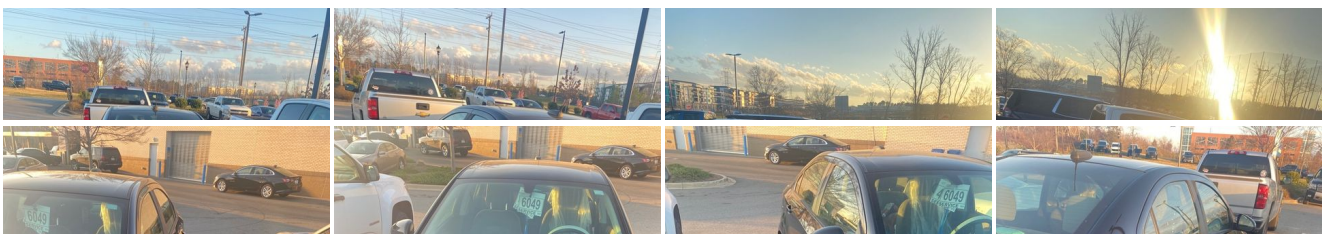
[833-825-2763](tel:833-825-2763)

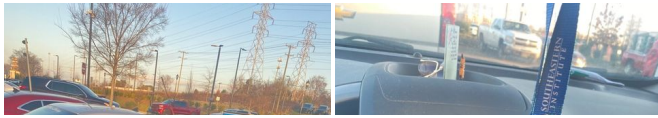
615 NC-66 South, Kernersville, NC 27284

[Photos](#)

[Details](#)

[Contact](#)





Specifications:

Year:	2016
VIN:	1G1JA5SH4G4166552
Make:	Chevrolet
Stock:	103038B
Model/Trim:	Sonic LS
Condition:	Pre-Owned
Body:	Sedan
Exterior:	Mosaic Black Metallic
Engine:	ENGINE, ECOTEC 1.8L VARIABLE VALVE TIMING DOHC 4-CYLINDER SEQUENTIAL MFI
Interior:	Jet Black/Dark Titanium Cloth
Mileage:	138,425
Drivetrain:	Front Wheel Drive
Economy:	City 24 / Highway 35

Vehicle Description

2016 Chevrolet Sonic LS

ABS brakes, Front Bucket Seats, Front wheel independent suspension, Fully automatic headlights, Rear window defroster, Remote keyless entry, Sport Cloth Seat Trim, Sport steering wheel. CARFAX One-Owner.

24/35 City/Highway MPG

Call 704.288.0662 to check on the availability of this vehicle and schedule a private showing or shop 24 hours a day @ WWW.PARKSCHARLOTTE.COM. *All prices are plus tax, tag, title, and documentation. All vehicles are fully reconditioned by a Master ASE Factory Trained Certified Technician.

Awards:
 * JD Power Automotive Performance, Execution and Layout (APEAL) Study, Dependability Study * 2016 IIHS Top Safety Pick with optional front crash prevention * 2016 IIHS Top Safety Pick * 2016 KBB.com 10 Coolest New Cars Under \$18,000

Installed Options	Option Packages
Interior <ul style="list-style-type: none"> - Seats, front bucket with recline and height-adjustable headrests - Seat trim, Sport Cloth - Floor mats, carpeted front- Door locks, power- Remote Keyless Entry - Seat adjuster, driver 4-way manual, fore/aft, up/down - Seat adjuster, front passenger 2-way manual, fore/aft - Armrest, driver seat - Seat, rear bench 60/40 split-folding with outboard height-adjustable headrests - Power outlet, auxiliary, front center console- Steering column, tilt and telescoping - Steering wheel, sport, 3-spoke - Steering wheel controls, mounted audio and phone interface controls - Keys, ignition, foldable, 2 - Instrumentation, with analog tachometer; digital speedometer, odometer, trip odometer and fuel gauge - Temperature sensor, outside- Compass- Oil life monitoring system - Driver Information Center with trip odometer, fuel range, average fuel economy and average vehicle speed - Windows, manual- Battery, retained accessory power- Trunk release, inside, remote - Engine immobilizer, theft-deterrent system- Theft-deterrent system, content theft alarm - Air conditioning, single-zone manual- Air filtration system, pollutant and odor - Defogger, rear-window electric- Instrument panel, Graphite Silver Metallic accents - Cup holders, 2 front and 1 rear - Bottle holders, 2, on driver and front passenger doors with storage pockets - Mirror, inside rearview manual day/night 	Factory Installed Packages <hr/> <p>ENGINE, ECOTEC 1.8L VARIABLE VALVE TIMING DOHC 4-CYLINDER SEQUENTIAL MFI (138 hp [103 kW] @ 6300 rpm, 125 lb-ft of torque [168.8 N-m] @ 3800 rpm)</p>

- Visors, driver and front passenger vanity mirrors, covered
- Assist handles, driver, front passenger and rear outboard
- Lighting, interior overhead courtesy, rear and dual front reading lamps
- Lighting, interior, trunk/cargo area- Shift knob, satin silver
- Map pocket, front passenger seatback

Exterior

- Wheels, 15" (38.1 cm) steel with full bolt-on wheel covers
- Tires, P195/65R15 all-season, blackwall- Tire, T115/70R16, blackwall, compact spare
- Headlamps, halogen composite- Headlamp control, automatic on and off
- Mirrors, outside manual, body-color, manual-folding- Glass, solar absorbing, tinted
- Wipers, front intermittent, variable- Door handles, body-color

Safety

- Seats, front bucket with recline and height-adjustable headrests - Seat trim, Sport Cloth
- Floor mats, carpeted front- Door locks, power- Remote Keyless Entry
- Seat adjuster, driver 4-way manual, fore/aft, up/down
- Seat adjuster, front passenger 2-way manual, fore/aft - Armrest, driver seat
- Seat, rear bench 60/40 split-folding with outboard height-adjustable headrests
- Power outlet, auxiliary, front center console- Steering column, tilt and telescoping
- Steering wheel, sport, 3-spoke
- Steering wheel controls, mounted audio and phone interface controls
- Keys, ignition, foldable, 2
- Instrumentation, with analog tachometer; digital speedometer, odometer, trip odometer and fuel gauge
- Temperature sensor, outside- Compass- Oil life monitoring system
- Driver Information Center with trip odometer, fuel range, average fuel economy and average vehicle speed
- Windows, manual- Battery, retained accessory power- Trunk release, inside, remote
- Engine immobilizer, theft-deterrent system- Theft-deterrent system, content theft alarm
- Air conditioning, single-zone manual- Air filtration system, pollutant and odor
- Defogger, rear-window electric- Instrument panel, Graphite Silver Metallic accents
- Cup holders, 2 front and 1 rear
- Bottle holders, 2, on driver and front passenger doors with storage pockets
- Mirror, inside rearview manual day/night
- Visors, driver and front passenger vanity mirrors, covered
- Assist handles, driver, front passenger and rear outboard
- Lighting, interior overhead courtesy, rear and dual front reading lamps
- Lighting, interior, trunk/cargo area- Shift knob, satin silver
- Map pocket, front passenger seatback

Mechanical

- Transmission, 6-speed automatic
- Engine, ECOTEC 1.8L Variable Valve Timing DOHC 4-cylinder sequential MFI (138 hp [103 kW] @ 6300 rpm, 125 lb-ft of torque [168.8 N-m] @ 3800 rpm) (Available with (YF5) California state emissions requirements or (NE1) Connecticut, Delaware, Maine, Maryland, Massachusetts, New Jersey, New York, Oregon, Pennsylvania, Rhode Island, Vermont or Washington state emissions requirements when (NC7) Federal emissions override is ordered. Available with FEF order type.)
- Axle, 3.47 final drive ratio- Front wheel drive- Battery, 438 cold-cranking amps
- Battery rundown protection- Alternator, 100 amps- Suspension, Touring
- Steering, power, Electric Power Steering (EPS)- Brakes, front disc/rear drum
- Exhaust, stainless-steel, heavy-duty- Mechanical jack with tools

Parks Chevrolet, Inc.

Parks Chevrolet, Inc.

View this car on our website at parksdeals.com/7064266

Website: parksdeals.com

Phone: 833-825-2763

Map: 615 NC-66 South, Kernersville, NC 27284

