

2020 Chevrolet Express Cargo Van Work Van

View this car on our website at parksdeals.com/7063796/ebrochure



Our Price **\$48,677**

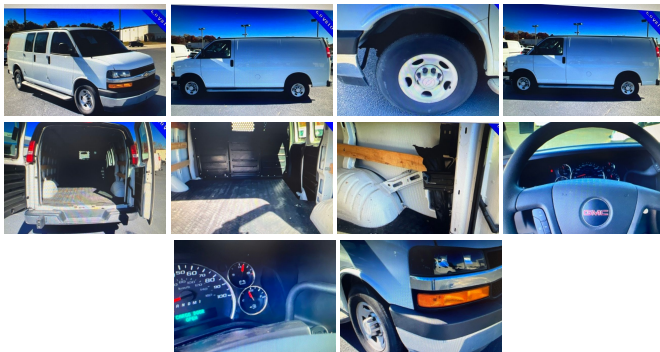
Specifications:

Year:	2020
VIN:	1GCWGAFG6L1179952
Make:	Chevrolet
Stock:	9K6197
Model/Trim:	Express Cargo Van Work Van
Condition:	Pre-Owned
Body:	Minivan/Van
Exterior:	Summit White
Engine:	ENGINE, VORTEC 6.0L V8 SFI FLEXFUEL
Interior:	Jet Black/Medium Dark Pewter Cloth
Mileage:	21,705
Drivetrain:	Rear Wheel Drive

Parks Chevrolet in Kernersville, NC ! We offer low payment - easy financing on everything ! We sell in volume and that saves you money!!

2020 Summit White Chevrolet Express 2500 CARFAX One-Owner. Chrome Appearance Package, Chrome Grille, Cruise Control, Driver Convenience Package, Front & Rear Chrome Bumpers w/Step-Pad, Preferred Equipment Group 1WT, Tilt Steering Wheel.

\$1000 - Dealer Trade-in Allowance (Must own and trade a 2014 or newer passenger vehicle to qualify for the Dealer Trade-in Allowance), Allowance is \$1000 above True Car Cash Offer. This offer is based on the current condition of the vehicle and must be appraised at the Dealership to receive the Trade-In Allowance. \$1000 - Dealer Finance Discount (Must qualify and finance with GM Financial, not available with special financing rates or programs.) Price does not include tax, tag, and fees.



2020 Chevrolet Express Cargo Van Work Van

Parks Chevrolet, Inc. - 833-825-2763 - View this car on our website at parksdeals.com/7063796/ebrochure

Vehicle History Report : as Of 05/19/2024

CARFAX

Snapshot

2020 CHEVROLET EXPRESS 2500



Accident reported: airbag deployed



4 Service history records



2 Previous owners



Types of owners: Rental, Commercial



Last owned in Massachusetts



36,179 Last reported odometer reading



FREE CARFAX Report

See the full CARFAX Report for additional information

*carfax Snapshot is a reflection of available information on the date the report was pulled. carfax is constantly being updated with new information and is subject to change at any time.

Our Location :



2020 Chevrolet Express Cargo Van Work Van

Parks Chevrolet, Inc. - 833-825-2763 - View this car on our website at parksdeals.com/7063796/ebrochure

Installed Options

Interior

- Seats, front bucket with vinyl trim and outboard head restraints, includes inboard armrests. (Requires (**W) interior trim.)
- Seating arrangement, driver and front passenger high-back buckets with head restraints and vinyl or cloth trim (Not available with (AJ3) driver-side only frontal airbag.)
- Air conditioning, single-zone manual (Not available with (R6G) air conditioning delete.)
- Driver Information Center includes fuel range, average speed, oil life, tire pressure monitoring, fuel used, ice warning, engine hours, average fuel economy, tachometer, and maintenance reminders. Compass and outside temperature available if equipped.
- Door locks, power with lock-out protection (Included with (ZQ2) Power Convenience Package. NOTE: Does not include (ATG) Remote Keyless Entry. (ATG) Remote Keyless Entry must be ordered separately.)
- Windows, power (Included with (ZQ2) Power Convenience Package.)
- Power outlets, 2 auxiliary on engine console cover with covers, 12-volt
- Power outlet, 120-volt- Mirror, inside rearview includes Rear Vision Camera display
- Console, engine cover with open storage bin
- Floor covering, full-length Black rubberized-vinyl (Not available with (RFM) rear floor covering delete or (PCH) Hotel Shuttle Package.)
- Steering wheel, steel sleeve column with theft-deterrent locking feature, Black
- Instrumentation, analog with speedometer, odometer with trip odometer, fuel level,

Option Packages

Factory Installed Packages

ENGINE, VORTEC 6.0L V8 SFI FLEXFUEL (341 hp [254.3 kW] @ 5400 rpm, 373 lb-ft of torque [503.6 N-m] @ 4200 rpm)	\$995
Option Packages Total	\$995

- voltmeter, engine temperature and oil pressure
- Oil life monitor- Warning tones, headlamp on and key-in-ignition
- Tow/haul mode selector, instrument panel-mounted
- Theft-deterrent system, vehicle, PASS-Key III- Defogger, side windows
- Cup holders, 3 on the engine console cover
- Trim panels, hinged rear side doors and hinged rear doors (Not available with (Y3H) Paratransit Package.)
- Headliner, cloth, over driver and passenger- Visors, driver and front passenger, vinyl
- Assist handles, driver and right-front passenger
- Lighting, interior with 4 dome lights 1 overhead and 3 LED's on cross members in cargo area, includes defeat switch and door handle-activated switches
- Cargo tie-downs 6 D-ring attachments on cargo area floor (Not available with (Y3H) Paratransit Package or (ZP6) 5-passenger Express Crew Van.)
- Chevrolet Connected Access capable (Included and only available with (UE1) OnStar. Subject to terms. See onstar.com or dealer for details.)

Exterior

- Wheels, 4 - 16" x 6.5" (40.6 cm x 16.5 cm) steel includes Gray center caps and steel spare
- Tire, spare LT245/75R16E all-season, blackwall located at rear underbody of vehicle
- Door, swing-out passenger-side, 60/40 split
- Tires, front LT245/75R16E all-season, blackwall
- Tires, rear LT245/75R16E all-season, blackwall
- Bumpers, front and rear painted Black with step-pad
- Headlamps, dual halogen composite- Mirrors, outside manual, Black
- Glass, Solar-Ray light-tinted, all windows
- Wipers, front intermittent wet-arm with pulse washers- License plate kit, front

Safety

- Seats, front bucket with vinyl trim and outboard head restraints, includes inboard armrests. (Requires (**W) interior trim.)
- Seating arrangement, driver and front passenger high-back buckets with head restraints and vinyl or cloth trim (Not available with (AJ3) driver-side only frontal airbag.)
- Air conditioning, single-zone manual (Not available with (R6G) air conditioning delete.)
- Driver Information Center includes fuel range, average speed, oil life, tire pressure monitoring, fuel used, ice warning, engine hours, average fuel economy, tachometer, and maintenance reminders. Compass and outside temperature available if equipped.
- Door locks, power with lock-out protection (Included with (ZQ2) Power Convenience Package. NOTE: Does not include (ATG) Remote Keyless Entry. (ATG) Remote Keyless Entry must be ordered separately.)
- Windows, power (Included with (ZQ2) Power Convenience Package.)
- Power outlets, 2 auxiliary on engine console cover with covers, 12-volt
- Power outlet, 120-volt- Mirror, inside rearview includes Rear Vision Camera display
- Console, engine cover with open storage bin
- Floor covering, full-length Black rubberized-vinyl (Not available with (RFM) rear floor covering delete or (PCH) Hotel Shuttle Package.)
- Steering wheel, steel sleeve column with theft-deterrent locking feature, Black
- Instrumentation, analog with speedometer, odometer with trip odometer, fuel level, voltmeter, engine temperature and oil pressure
- Oil life monitor- Warning tones, headlamp on and key-in-ignition
- Tow/haul mode selector, instrument panel-mounted
- Theft-deterrent system, vehicle, PASS-Key III- Defogger, side windows
- Cup holders, 3 on the engine console cover
- Trim panels, hinged rear side doors and hinged rear doors (Not available with (Y3H) Paratransit Package.)
- Headliner, cloth, over driver and passenger- Visors, driver and front passenger, vinyl
- Assist handles, driver and right-front passenger
- Lighting, interior with 4 dome lights 1 overhead and 3 LED's on cross members in cargo area, includes defeat switch and door handle-activated switches
- Cargo tie-downs 6 D-ring attachments on cargo area floor (Not available with (Y3H) Paratransit Package or (ZP6) 5-passenger Express Crew Van.)
- Chevrolet Connected Access capable (Included and only available with (UE1) OnStar. Subject to terms. See onstar.com or dealer for details.)

Mechanical

- Engine, 4.3L V6 with Direct Injection and Variable Valve Timing, includes aluminum block construction (276 hp [206 kW] @ 5200 rpm, 298 lb-ft of torque [404 Nm] @ 3900 rpm) (Reference the Engine/Axle page for availability.)
- Transmission, 8-speed automatic, electronically controlled with overdrive and tow/haul mode, includes Cruise Grade Braking and Powertrain Grade Braking (Requires (LV1) 4.3L V6 SIDI engine.)
- Rear axle, 3.42 ratio (Reference the Engine/Axle page for availability.) - Body, standard
- GVWR, 8600 lbs. (3901 kg) (Reference the Engine/Axle page for availability.)
- Transmission oil cooler, external (Not available with (LWN) 2.8L Duramax Turbo-Diesel engine.)
- Rear wheel drive

rear wheel drive

- Cooling, external engine oil cooler (Not available with (LWN) 2.8L Duramax Turbo-Diesel engine.)
 - Battery, 600 cold-cranking amps, maintenance-free with rundown protection and retained accessory power
 - Alternator, 105 amps (Not available with (Y3H) Paratransit Package, (C69) rear air conditioning, (9L7) Wiring junction block equipment accessory or (LWN) 2.8L Duramax Turbo-Diesel engine.)
 - Frame, full-length box ladder-type
 - Suspension, front independent with coil springs and stabilizer bar
 - Suspension, rear hypoid drive axle with multi-leaf springs- Steering, power
 - Brakes, 4-wheel antilock, 4-wheel disc
 - Fuel tank capacity, mid-frame and approximately 31 gallons (117.3L)
 - Exhaust, aluminized stainless-steel muffler and tailpipe
-

Parks Chevrolet, Inc.

parksdeals.com

833-825-2763

615 NC-66 South

Kernersville, NC 27284

© 2024 AutoRevo - All rights reserved. - Powered by AutoRevo