



2019 Chevrolet Camaro ZL1

Our Price \$67,532

View this vehicle on our website at parksdeals.com

Parks Chevrolet, Inc.

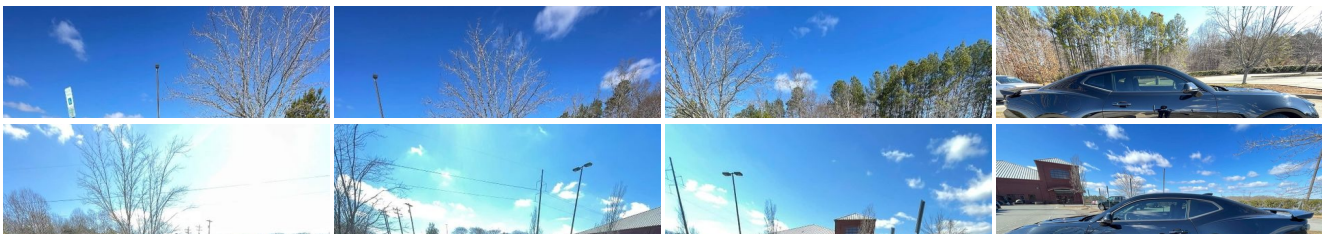
[833-825-2763](tel:833-825-2763)

615 NC-66 South, Kernersville, NC 27284

[Photos](#)

[Details](#)

[Contact](#)





Specifications:

Year:	2019
VIN:	1G1FJ1R69K0112151
Make:	Chevrolet
Stock:	153691B
Model/Trim:	Camaro ZL1
Condition:	Pre-Owned
Body:	Coupe
Exterior:	Black
Engine:	ENGINE, 6.2L SUPERCHARGED V8 DI, VVT
Interior:	Jet Black With Red Accents Cloth
Mileage:	12,941
Drivetrain:	Rear Wheel Drive
Economy:	City 13 / Highway 20

Vehicle Description

2019 Chevrolet Camaro ZL1 Certified.

6-Way Power Front Passenger Seat Adjuster, 8-Way Power Driver Seat Adjuster, 9 Speakers, ABS brakes, Exterior Parking Camera Rear, Front dual zone A/C, Heads-Up Display, Heated Driver & Front Passenger Seats, High-Intensity Discharge Headlights, Power Sunroof, Preferred Equipment Group 1SE, RECARO Performance Front Bucket Seats, Remote keyless entry, Ventilated Driver & Front Passenger Seats. Clean CARFAX.

Call 704.288.0662 to check on the availability of this vehicle and schedule a private showing or shop 24 hours a day @ WWW.PARKSCHARLOTTE.COM. *All prices are plus tax, tag, title, and documentation. All vehicles are fully reconditioned by a Master ASE Factory Trained Certified Technician.

Awards:

* 2019 KBB.com 10 Coolest Cars Under \$30,000

Installed Options

Interior

- Seats, Leather-trimmed with sueded inserts front bucket, RECARO performance
- Seat adjuster, driver, 8-way power- Seats, heated driver and front passenger
- Seats, ventilated driver and front passenger- Seat, rear, folding
- Floor mats, carpeted front- Door locks, power programmable with lockout protection
- Keyless Open and Start includes 2 remote transmitters that enable automatic door unlock and open by touching door switch
- Mirror, inside rearview auto-dimming, frameless (Included and only available with (A1Y/A1Z) 1LE Track Performance Package.)
- Seat adjuster, front passenger, 6-way power- Pedals, sporty alloy- Dead pedal, driver
- Sill plates, illuminated- Steering wheel, heated
- Steering wheel, 3-spoke, sueded microfiber-wrapped, flat-bottom
- Steering column, manual rake and telescopic
- Head-Up Display with color digital readouts for vehicle speed, selected gear, G-Force, audio system information, high-beam indicator, compass, outside air temperature, tachometer, vehicle messages, Turn-by-Turn information and phone information
- Speedometer, miles/kilometers
- Driver Information Center, enhanced, 8" diagonal multi-color re-configurable display
- Compass display
- Air conditioning, dual-zone automatic climate control with individual climate settings for driver and dedicated passenger controls and outside temperature display
- Power outlet, 1 located on center console- Wireless Charging for devices
- Windows, power with driver and passenger Express-Down/Up
- Cruise control, electronic with set and resume speed, steering wheel mounted
- Rear Camera Mirror (Deleted when (A1Y/A1Z) 1LE Track Performance Package is

Option Packages

Factory Installed Packages

ENGINE, 6.2L SUPERCHARGED V8 DI, VVT
(650 hp [485 kW] @ 6400 rpm, 650 lb-ft torque
[881N-m] @ 3600 rpm)

- Rear Camera Mirror (Deleted when (A1Y/A1Z) 1LE Track Performance Package is ordered.)
- Visors, driver and front passenger vanity mirrors, covered, illuminated
- Trunk release, power- Theft-deterrent system, electrical, unauthorized entry
- Defogger, rear-window, electric- Glovebox, lockable- Cup holders, 2 front
- Lighting, front reading lamps- Lighting, interior spectrum, 24 different color selections
- Shift knob, sueded microfiber-wrapped
- Interior trim, aluminum accents on door trim and shifter cap

Exterior

- Wheels, 20" x 10" (50.8 cm x 25.4 cm) front and 20" x 11" (50.8 cm x 27.9 cm) rear Dark Graphite premium paint, forged aluminum
- Tires, 285/30R20 front and 305/30R20 rear, blackwall, summer-only (Do not use summer only tires in winter conditions, as it would adversely affect vehicle safety, performance and durability. Use only GM-approved tire and wheel combinations. Unapproved combinations may change the vehicle's performance characteristics. For important tire and wheel information, go to <https://my.chevrolet.com/learnAbout/chevrolettires> or see your dealer.)
- Spoiler, rear, sport- Tire inflation kit
- Mirrors, outside heated power-adjustable and driver-side auto-dimming, body-color
- Wipers, front variable-speed, intermittent with washers

Safety

- Seats, Leather-trimmed with sueded inserts front bucket, RECARO performance
- Seat adjuster, driver, 8-way power- Seats, heated driver and front passenger
- Seats, ventilated driver and front passenger- Seat, rear, folding
- Floor mats, carpeted front- Door locks, power programmable with lockout protection
- Keyless Open and Start includes 2 remote transmitters that enable automatic door unlock and open by touching door switch
- Mirror, inside rearview auto-dimming, frameless (Included and only available with (A1Y/A1Z) 1LE Track Performance Package.)
- Seat adjuster, front passenger, 6-way power- Pedals, sporty alloy- Dead pedal, driver
- Sill plates, illuminated- Steering wheel, heated
- Steering wheel, 3-spoke, sueded microfiber-wrapped, flat-bottom
- Steering column, manual rake and telescopic
- Head-Up Display with color digital readouts for vehicle speed, selected gear, G-Force, audio system information, high-beam indicator, compass, outside air temperature, tachometer, vehicle messages, Turn-by-Turn information and phone information
- Speedometer, miles/kilometers
- Driver Information Center, enhanced, 8" diagonal multi-color re-configurable display
- Compass display
- Air conditioning, dual-zone automatic climate control with individual climate settings for driver and dedicated passenger controls and outside temperature display
- Power outlet, 1 located on center console- Wireless Charging for devices
- Windows, power with driver and passenger Express-Down/Up
- Cruise control, electronic with set and resume speed, steering wheel mounted
- Rear Camera Mirror (Deleted when (A1Y/A1Z) 1LE Track Performance Package is ordered.)
- Visors, driver and front passenger vanity mirrors, covered, illuminated
- Trunk release, power- Theft-deterrent system, electrical, unauthorized entry
- Defogger, rear-window, electric- Glovebox, lockable- Cup holders, 2 front
- Lighting, front reading lamps- Lighting, interior spectrum, 24 different color selections
- Shift knob, sueded microfiber-wrapped
- Interior trim, aluminum accents on door trim and shifter cap

Mechanical

- Transmission, 6-speed manual (Includes Active Rev Matching.)
- Engine, 6.2L supercharged V8 DI, VVT (650 hp [485 kW] @ 6400 rpm, 650 lb-ft torque [881N-m] @ 3600 rpm)
- Rear axle, 3.73 ratio (Included with (MN6) 6-speed manual transmission.)
- Cooling, external engine oil cooler- Cooling system, extra capacity
- Cooler, engine coolant, auxiliary
- Driver Selector Mode up to 4 modes available for various driving conditions - Snow/Ice, Tour, Sport and Track (SS and ZL1 models only)
- Launch control, custom- Differential, electronic limited slip (eLSD)
- Cooler, rear differential- Cooler, transmission oil- Battery rundown protection
- Rear wheel drive- Suspension, Performance- Magnetic ride control
- Steering, power, variable ratio, electric
- Brakes, Brembo 6-piston front and 4-piston rear, performance, 4-wheel antilock, 4-wheel disc
- Fueling system, capless- Exhaust, dual-mode

Parks Chevrolet, Inc.

Parks Chevrolet, Inc.

View this car on our website at parksdeals.com/7063784

Website: parksdeals.com

Phone: [833-825-2763](tel:833-825-2763)

Map: [615 NC-66 South, Kernersville, NC 27284](#)

