

2018 Toyota RAV4 LE

Our Price \$28,126

View this vehicle on our website at parksdeals.com

Parks Chevrolet, Inc.

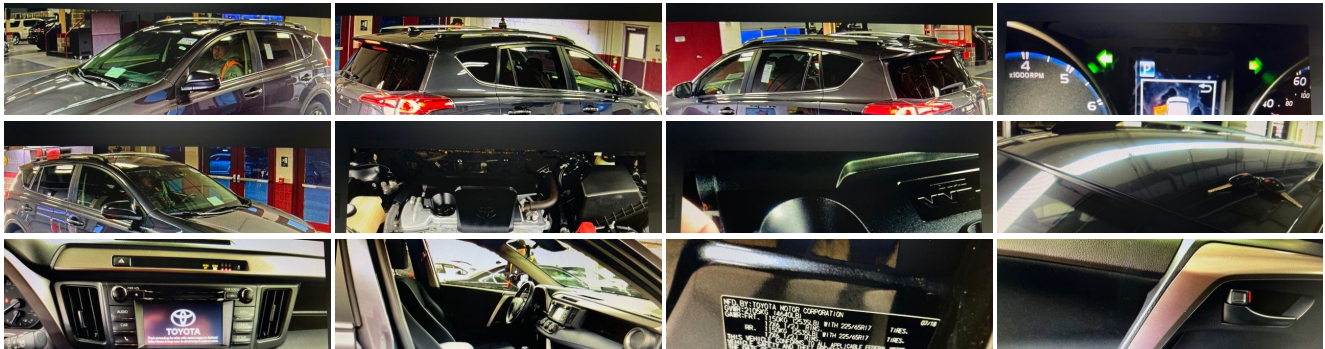
833-825-2763

615 NC-66 South, Kernersville, NC 27284

Photos

Details

Contact



Specifications:

Year:	2018
VIN:	JTMBFREV8JJ244653
Make:	Toyota

Stock:	3K6186
Model/Trim:	RAV4 LE
Condition:	Pre-Owned
Body:	SUV
Exterior:	Magnetic Gray Metallic
Engine:	Engine: 2.5L DOHC 4-Cylinder w/Dual VVT-i
Interior:	Black Cloth
Mileage:	20,082
Drivetrain:	All Wheel Drive
Economy:	City 22 / Highway 28

Vehicle Description

STILL UNDER TOYOTA WARRANTY!!! CLEAN CARFAX ONE OWNER!!! ALL WHEEL DRIVE!!!

Parks Chevrolet in Kernersville, NC ! We offer low payment - easy financing on everything ! We sell in volume and that saves you money!!

2018 Gray Toyota RAV4 CARFAX One-Owner. Clean CARFAX. Bluetooth, Backup Camera, Remaining Factory Warranty, CARFAX One-Owner, CARFAX Clean Vehicle History, AWD, Black w/Fabric Seat Trim, AM/FM radio, Exterior Parking Camera Rear, Fabric Seat Trim, Fully automatic headlights, Panic alarm, Radio: Entune AM/FM/CD/MP3/WMA Playback w/6 Speakers, Wheels: 17" x 6.5J.

\$1000 - Dealer Trade-in Allowance (Must own and trade a 2014 or newer passenger vehicle to qualify for the Dealer Trade-in Allowance), Allowance is \$1000 above True Car Cash Offer. This offer is based on the current condition of the vehicle and must be appraised at the Dealership to receive the Trade-In Allowance. \$1000 - Dealer Finance Discount (Must qualify and finance with GM Financial, not available with special financing rates or programs.) Price does not include tax, tag, and fees.

Installed Options

Interior

- Gauges -inc: Speedometer, Odometer, Engine Coolant Temp, Tachometer, Trip Odometer and Trip Computer
- Power Rear Windows and Fixed 3rd Row Windows
- Remote Keyless Entry w/Integrated Key Transmitter, Illuminated Entry, Illuminated Ignition Switch and Panic Button
- Fabric Seat Trim- Power Door Locks w/Autolock Feature
- Power 1st Row Windows w/Driver 1-Touch Down- Trip Computer
- Front Bucket Seats -inc: 6-way adjustable driver and 4-way adjustable passenger seats, 60/40 split, reclining, fold-flat second-row seats w/height-adjustable headrests and center armrest
- Driver Seat- Passenger Seat- Split-Bench Front Facing Rear Seat
- Manual Tilt/Telescoping Steering Column- Front Cupholder- Rear Cupholder
- Remote Releases -Inc: Mechanical Fuel- Cruise Control w/Steering Wheel Controls
- Distance Pacing- HVAC -inc: Underseat Ducts- Manual Air Conditioning- Glove Box
- Driver Foot Rest- Full Cloth Headliner- Cloth Door Trim Insert
- Urethane Gear Shifter Material
- Interior Trim -inc: Metal-Look Instrument Panel Insert, Metal-Look Door Panel Insert and Metal-Look Interior Accents
- Day-Night Rearview Mirror- Driver And Passenger Visor Vanity Mirrors
- Full Floor Console w/Covered Storage, Mini Overhead Console w/Storage and 3 12V DC Power Outlets
- Front Map Lights- Fade-To-Off Interior Lighting- Full Carpet Floor Covering
- Carpet Floor Trim- Cargo Area Concealed Storage- Cargo Space Lights
- Instrument Panel Bin, Driver And Passenger Door Bins- Delayed Accessory Power
- Systems Monitor- Outside Temp Gauge- Analog Appearance
- Manual Adjustable Front Head Restraints- Front Center Armrest
- 2 Seatback Storage Pockets- Seats w/Cloth Back Material- Engine Immobilizer
- 3 12V DC Power Outlets- Air Filtration

Exterior

- Tailgate/Rear Door Lock Included w/Power Door Locks- Wheels: 17" x 6.5J -inc: caps
- Tires: P225/65R17H AS Wide Vent- Steel Spare Wheel
- Compact Spare Tire Mounted Inside Under Cargo- Clearcoat Paint
- Body-Colored Front Bumper w/Black Rub Strip/Fascia Accent
- Body-Colored Rear Bumper w/Black Rub Strip/Fascia Accent
- Chrome Side Windows Trim and Black Front Windshield Trim

- Black Bodyside Cladding and Black Wheel Well Trim- Body-Colored Door Handles
- Black Power Side Mirrors w/Convex Spotter and Manual Folding
- Fixed Rear Window w/Fixed Interval Wiper and Defroster- Deep Tinted Glass
- Fixed Interval Wipers- Fully Galvanized Steel Panels- Lip Spoiler
- Black Grille w/Chrome Accents- Liftgate Rear Cargo Access
- Headlights-Automatic Highbeams
- Auto On/Off Projector Beam Halogen Daytime Running Auto High-Beam Headlamps
- Laminated Glass

Safety

- Gauges -inc: Speedometer, Odometer, Engine Coolant Temp, Tachometer, Trip Odometer and Trip Computer
- Power Rear Windows and Fixed 3rd Row Windows
- Remote Keyless Entry w/Integrated Key Transmitter, Illuminated Entry, Illuminated Ignition Switch and Panic Button
- Fabric Seat Trim- Power Door Locks w/Autolock Feature
- Power 1st Row Windows w/Driver 1-Touch Down- Trip Computer
- Front Bucket Seats -inc: 6-way adjustable driver and 4-way adjustable passenger seats, 60/40 split, reclining, fold-flat second-row seats w/height-adjustable headrests and center armrest
- Driver Seat- Passenger Seat- Split-Bench Front Facing Rear Seat
- Manual Tilt/Telescoping Steering Column- Front Cupholder- Rear Cupholder
- Remote Releases -Inc: Mechanical Fuel- Cruise Control w/Steering Wheel Controls
- Distance Pacing- HVAC -inc: Underseat Ducts- Manual Air Conditioning- Glove Box
- Driver Foot Rest- Full Cloth Headliner- Cloth Door Trim Insert
- Urethane Gear Shifter Material
- Interior Trim -inc: Metal-Look Instrument Panel Insert, Metal-Look Door Panel Insert and Metal-Look Interior Accents
- Day-Night Rearview Mirror- Driver And Passenger Visor Vanity Mirrors
- Full Floor Console w/Covered Storage, Mini Overhead Console w/Storage and 3 12V DC Power Outlets
- Front Map Lights- Fade-To-Off Interior Lighting- Full Carpet Floor Covering
- Carpet Floor Trim- Cargo Area Concealed Storage- Cargo Space Lights
- Instrument Panel Bin, Driver And Passenger Door Bins- Delayed Accessory Power
- Systems Monitor- Outside Temp Gauge- Analog Appearance
- Manual Adjustable Front Head Restraints- Front Center Armrest
- 2 Seatback Storage Pockets- Seats w/Cloth Back Material- Engine Immobilizer
- 3 12V DC Power Outlets- Air Filtration

Mechanical

- Transmission: 6-Speed Automatic
- Transmission w/Driver Selectable Mode, Sequential Shift Control and Oil Cooler
- Engine: 2.5L DOHC 4-Cylinder w/Dual VVT-i- 4.071 Axle Ratio- GVWR: 4,640 lbs
- Electronic Transfer Case- Automatic Full-Time All-Wheel
- 550CCA Maintenance-Free Battery w/Run Down Protection
- Towing Equipment -inc: Trailer Sway Control- 900# Maximum Payload
- Gas-Pressurized Shock Absorbers- Front And Rear Anti-Roll Bars
- Electric Power-Assist Speed-Sensing Steering- 15.9 Gal. Fuel Tank
- Single Stainless Steel Exhaust- Permanent Locking Hubs
- Strut Front Suspension w/Coil Springs
- Double Wishbone Rear Suspension w/Coil Springs
- 4-Wheel Disc Brakes w/4-Wheel ABS, Front Vented Discs, Brake Assist and Hill Hold Control

Parks Chevrolet, Inc.

Parks Chevrolet, Inc.

View this car on our website at parksdeals.com/7063414

Website: parksdeals.com

Phone: [833-825-2763](tel:833-825-2763)

Map: [615 NC-66 South, Kernersville, NC 27284](#)

