



2019 Ram All-New 1500 Big Horn/Lone Star

Our Price \$36,837

View this vehicle on our website at parksdeals.com

Parks Chevrolet, Inc.

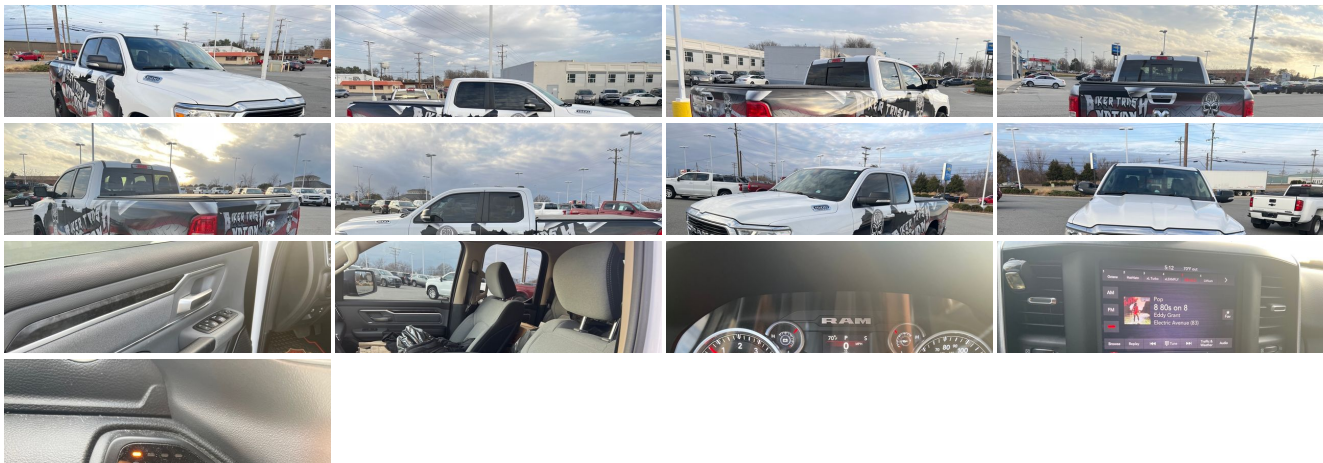
[833-825-2763](tel:833-825-2763)

615 NC-66 South, Kernersville, NC 27284

Photos

Details

Contact



Specifications:

Year:

2019

VIN:	1C6SRFBT7KN602013
Make:	Ram
Stock:	155497A
Model/Trim:	All-New 1500 Big Horn/Lone Star
Condition:	Pre-Owned
Body:	Pickup Truck
Exterior:	Bright White Clearcoat
Engine:	ENGINE: 5.7L V8 HEMI MDS VVT
Interior:	Diesel Gray/Black Cloth
Mileage:	48,455
Drivetrain:	4 Wheel Drive
Economy:	City 15 / Highway 21

Vehicle Description

Parks Chevrolet in Kernersville, NC ! We offer low payment - easy financing on everything ! We sell in volume and that saves you money!!

2019 Bright White Clearcoat Ram 1500 CARFAX One-Owner. Clean CARFAX.

\$1000 - Dealer Trade-in Allowance (Must own and trade a 2014 or newer passenger vehicle to qualify for the Dealer Trade-in Allowance), Allowance is \$1000 above True Car Cash Offer. This offer is based on the current condition of the vehicle and must be appraised at the Dealership to receive the Trade-In Allowance. \$1000 - Dealer Finance Discount (Must qualify and finance with GM Financial, not available with special financing rates or programs.) Price does not include tax, tag, and fees.

Installed Options

Interior

- Gauges -inc: Speedometer, Odometer, Voltmeter, Oil Pressure, Engine Coolant Temp, Tachometer, Oil Temperature, Transmission Fluid Temp, Engine Hour Meter, Trip Odometer and Trip Computer
- Power Rear Windows
- Remote Keyless Entry w/Integrated Key Transmitter, Illuminated Entry and Panic Button
- Manual Air Conditioning- Cloth Bench Seat
- Passenger Visor Vanity Mirror w/Passenger Illumination
- Full Carpet Floor Covering -inc: Carpet Front And Rear Floor Mats
- Power 1st Row Windows w/Driver And Passenger 1-Touch Up/Down
- Power Door Locks w/Autolock Feature- Trip Computer- Front Seat Back Map Pockets
- 4-Way Driver Seat -inc: Manual Recline and Fore/Aft Movement - Passenger Seat
- Manual Adjust 4-Way Front Passenger Seat - Front Facing Cloth Rear Seat
- 3 Rear Seat Head Restraints- Manual Tilt/Telescoping Steering Column
- Rear 60/40 Folding Seat- Leather Steering Wheel- Illuminated Front Cupholder
- Rear Cupholder- Compass- Proximity Key For Push Button Start Only - Valet Function
- Cruise Control w/Steering Wheel Controls
- HVAC -inc: Underseat Ducts and Console Ducts - Locking Glove Box
- Full Cloth Headliner
- Interior Trim -inc: Deluxe Sound Insulation, Metal-Look Instrument Panel Insert, Metal-Look Door Panel Insert and Chrome/Metal-Look Interior Accents
- Vinyl Door Trim Insert- Metal-Look Gear Shifter Material- Day-Night Rearview Mirror
- Mini Overhead Console and 2 12V DC Power Outlets- Front Map Lights
- Fade-To-Off Interior Lighting- Pickup Cargo Box Lights- GPS Antenna Input
- Instrument Panel Bin, Dashboard Storage, Driver And Passenger Door Bins and 1st Row Underseat Storage
- Delayed Accessory Power- Systems Monitor- Outside Temp Gauge
- Analog Appearance- Redundant Digital Speedometer- Seats w/Cloth Back Material
- Front Center Armrest w/Storage and Rear Center Armrest- 4 Way Front Headrests
- Sentry Key Engine Immobilizer - 2 12V DC Power Outlets

Exterior

- Wheels: 18" x 8"- Full-Size Spare Tire Stored Underbody w/Crankdown
- Black Power Heated Side Mirrors w/Manual Folding- Sliding Rear Window
- Tailgate/Rear Door Lock Included w/Power Door Locks- Front Fog Lamps
- Tires: 275/65R18 BSW All Season LRR- Regular Box Style- Steel Spare Wheel
- Clearcoat Paint- Chrome Front Bumper w/Chrome Rub Strip/Fascia Accent

Option Packages

Factory Installed Packages

ENGINE: 5.7L V8 HEMI MDS VVT -inc: Active Noise Control System, 180 Amp Alternator, Heavy Duty Engine Cooling, GVWR: 7,100 lbs, Dual Rear Exhaust w/Bright Tips, HEMI badge, 26 Gallon Fuel Tank	\$1,395
-----------------------------------------------------------------------------------------------------------------------------------------------------------------------------------------------------	---------

Option Packages Total	\$1,395
-----------------------	---------

- Chrome Rear Step Bumper- Black Side Windows Trim- Chrome Door Handles
- Deep Tinted Glass- Variable Intermittent Wipers- Galvanized Steel/Aluminum Panels
- Front License Plate Bracket- Black Grille w/Chrome Surround
- Tailgate Rear Cargo Access
- Auto On/Off Aero-Composite Halogen Daytime Running Headlamps w/Delay-Off
- Cargo Lamp w/High Mount Stop Light- Perimeter/Approach Lights- Laminated Glass

Safety

- Gauges -inc: Speedometer, Odometer, Voltmeter, Oil Pressure, Engine Coolant Temp, Tachometer, Oil Temperature, Transmission Fluid Temp, Engine Hour Meter, Trip Odometer and Trip Computer
- Power Rear Windows
- Remote Keyless Entry w/Integrated Key Transmitter, Illuminated Entry and Panic Button
- Manual Air Conditioning- Cloth Bench Seat
- Passenger Visor Vanity Mirror w/Passenger Illumination
- Full Carpet Floor Covering -inc: Carpet Front And Rear Floor Mats
- Power 1st Row Windows w/Driver And Passenger 1-Touch Up/Down
- Power Door Locks w/Autolock Feature- Trip Computer- Front Seat Back Map Pockets
- 4-Way Driver Seat -inc: Manual Recline and Fore/Aft Movement - Passenger Seat
- Manual Adjust 4-Way Front Passenger Seat - Front Facing Cloth Rear Seat
- 3 Rear Seat Head Restraints- Manual Tilt/Telescoping Steering Column
- Rear 60/40 Folding Seat- Leather Steering Wheel- Illuminated Front Cupholder
- Rear Cupholder- Compass- Proximity Key For Push Button Start Only - Valet Function
- Cruise Control w/Steering Wheel Controls
- HVAC -inc: Underseat Ducts and Console Ducts - Locking Glove Box
- Full Cloth Headliner
- Interior Trim -inc: Deluxe Sound Insulation, Metal-Look Instrument Panel Insert, Metal-Look Door Panel Insert and Chrome/Metal-Look Interior Accents
- Vinyl Door Trim Insert- Metal-Look Gear Shifter Material- Day-Night Rearview Mirror
- Mini Overhead Console and 2 12V DC Power Outlets- Front Map Lights
- Fade-To-Off Interior Lighting- Pickup Cargo Box Lights- GPS Antenna Input
- Instrument Panel Bin, Dashboard Storage, Driver And Passenger Door Bins and 1st Row Underseat Storage
- Delayed Accessory Power- Systems Monitor- Outside Temp Gauge
- Analog Appearance- Redundant Digital Speedometer- Seats w/Cloth Back Material
- Front Center Armrest w/Storage and Rear Center Armrest- 4 Way Front Headrests
- Sentry Key Engine Immobilizer - 2 12V DC Power Outlets

Mechanical

- Engine: 3.6L V6 24V VVT eTorque UPG I - Transmission: 8-Speed Automatic (850RE)
- Transmission w/Driver Selectable Mode and Sequential Shift Control w/Steering Wheel Controls
- Class III Towing Equipment -inc: Hitch and Trailer Sway Control - 3.21 Rear Axle Ratio
- GVWR: 6,800 lbs- 50 State Emissions- Engine Auto Stop-Start Feature
- Electronic Transfer Case- Part And Full-Time Four-Wheel Drive- Engine Oil Cooler
- 730CCA Maintenance-Free Battery- 48V Belt Starter Generator- Trailer Wiring Harness
- 1810# Maximum Payload- HD Shock Absorbers- Front And Rear Anti-Roll Bars
- Electric Power-Assist Steering- 23 Gal. Fuel Tank- Single Stainless Steel Exhaust
- Auto Locking Hubs- Short And Long Arm Front Suspension w/Coil Springs
- Multi-Link Rear Suspension w/Coil Springs
- Regenerative 4-Wheel Disc Brakes w/4-Wheel ABS, Front Vented Discs, Brake Assist, Hill Hold Control and Electric Parking Brake
- Lithium Ion Traction Battery 0.43 kWh Capacity

Parks Chevrolet, Inc.

Parks Chevrolet, Inc.

View this car on our website at parksdeals.com/7062473

Website: parksdeals.com

Phone: 833-825-2763

Map: [615 NC-66 South, Kernersville, NC 27284](#)

