

## 2022 Chevrolet Blazer RS

View this car on our website at [parksdeals.com/7062461/ebrochure](https://parksdeals.com/7062461/ebrochure)



Our Price **\$42,170**

Retail Value ~~\$43,170~~

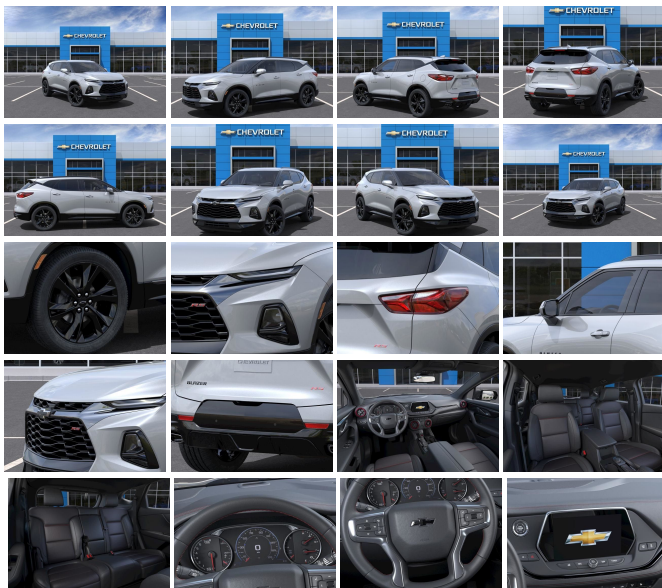
### Specifications:

<b>Year:</b>	2022
<b>VIN:</b>	3GNKBERS8NS153737
<b>Make:</b>	Chevrolet
<b>Stock:</b>	153737
<b>Model/Trim:</b>	Blazer RS
<b>Condition:</b>	New
<b>Body:</b>	SUV
<b>Exterior:</b>	Silver Ice Metallic
<b>Engine:</b>	ENGINE, 3.6L V6, SIDI, DOHC WITH VARIABLE VALVE TIMING (VVT)
<b>Interior:</b>	Jet Blk Perf Lth St Trm Leather
<b>Mileage:</b>	0
<b>Drivetrain:</b>	Front Wheel Drive
<b>Economy:</b>	City 19 / Highway 27

2022 Chevrolet Blazer RS Silver Ice Metallic 3.6L V6 SIDI FWD 9-Speed Automatic with Overdrive

Apple CarPlay/Android Auto, Exterior Parking Camera Rear, Heated Driver & Front Passenger Seats, Heated Steering Wheel, Navigation System, Preferred Equipment Group 1RS.

Contact us online at [www.parkscharlotte.com](https://www.parkscharlotte.com) or give us a call at (704) 288-0662 to have your questions answered, obtain a price quote for this vehicle, or schedule your test drive today. Our prices cannot be beat! Come visit us at 8530 IKEA BLVD CHARLOTTE NC. Price excludes administrative, origination, documentary, procurement and/or other administrative fee. You may or may not qualify for all rebates. Price does not include tax, tag, and fees. Price does not include any aftermarket products, bodies, or upfits. Price includes applicable rebates:\$1000 - Customer Cash. Exp. 04/04/2022



2022 Chevrolet Blazer RS

Parks Chevrolet, Inc. - 833-825-2763 - View this car on our website at [parksdeals.com/7062461/ebrochure](https://parksdeals.com/7062461/ebrochure)

## Our Location :



2022 Chevrolet Blazer RS

Parks Chevrolet, Inc. - 833-825-2763 - View this car on our website at [parksdeals.com/7062461/ebrochure](https://parksdeals.com/7062461/ebrochure)

## Installed Options

### Interior

- Seats, front buckets- Seat trim, Perforated Leather-Appointed- Seating, 5-passenger
- Seats, heated driver and front passenger (Vehicles built prior to November 15, 2021 include driver and front passenger heated seats. Certain vehicles built on or after November 15, 2021, will be forced to include (00V) Not Equipped with Driver and Front Passenger Heated Seats, which removes driver and front passenger heated seats. See dealer for details or the window label for the features on a specific vehicle.)
- Seat adjuster, driver 8-way power- Seat adjuster, front passenger 6-way power
- Head restraints, front, 2-way adjustable, up/down
- Head restraints, rear outboard 2-way adjustable, up/down
- Power outlet, 120-volt located on rear of front center console
- USB data ports, 2, one type-A and one type-C located within the instrument panel
- USB data ports, 2, one type-A and one type-C includes SD Card Reader, auxiliary input jack, located within front center storage bin
- USB charging-only ports 2, one type-A and one type-C, located on rear of center console
- Floor mats, carpeted front and rear (Deleted when LPO floor mats or LPO floor liners are ordered.)
- Steering wheel, leather-wrapped 3-spoke
- Steering wheel, heated (Vehicles built prior to November 22, 2021 include heated steering wheel. Certain vehicles built on or after November 22, 2021, will be forced to include (00G) Not Equipped with Heated Steering Wheel, which removes heated steering wheel. See dealer for details or the window label for the features on a specific vehicle.)
- Steering column, manual tilt and telescoping
- Driver Information Center, 8" diagonal multi-color enhanced reconfigurable
- Compass, digital
- Windows, power with driver Express-Up/Down and front passenger and rear seat passengers Express-Down
- Door locks, power programmable with lockout protection
- Keyless Open and Start includes extended range Remote Keyless Entry - Remote Start
- Universal Home Remote includes garage door opener, programmable
- Cruise control, electronic with set and resume speed
- Theft-deterrent system, electrical, unauthorized entry

- Air conditioning, dual-zone automatic climate control with individual climate settings for driver and right-front passenger
- Defogger, rear-window electric- Air filtration system- Air vents, rear console
- Glovebox, lockable electronic
- Cup holders, 2 in front center console and 2 in rear center armrest
- Mirror, inside rearview auto-dimming
- Visors, driver and front passenger illuminated vanity mirrors covered
- Assist handles, front passenger and rear outboard with coat hooks on rear passenger assist handles
- Lighting, interior with front reading lamps, overhead courtesy lamp, dual rear-quarter panel area dome lamps, True White backlit switches, True White pin spot lighting in the bin forward of the shifter and front footwells, LED glove box lighting and backlit USB ports
- Lighting, interior, ambient with pin spot lighting in the map pocket area, True White light pipes on the passenger-side of the instrument panel and below the front door remote handles and LED lighting between the center console cupholders
- Umbrella holders, driver and front passenger doors

---

## Exterior

- Wheels, 20" (50.8 cm) Dark Android machined-face aluminum - Door handles, body-color
- Liftgate, rear power programmable, hands free with emblem projection
- Bowties, Black, front and rear (Deleted when (R88) Black illuminated front bowtie emblem, LPO is ordered.)
- Wiper, rear intermittent with washer
- Wipers, front variable-speed, intermittent with washers
- Glass, deep-tinted, rear windows and liftgate- Mirror caps, body-color
- Mirrors, outside heated power-adjustable, manual-folding and driver-side auto-dimming body-color with integrated turn signal indicators
- Taillamps, LED- Headlamp control, automatic on and off with automatic delay
- Headlamps, IntelliBeam (Included and only available with (BN2) Chevy Safety Assist.)
- Headlamps, high intensity discharge (HID), bi-functional
- Grille, RS signature High-Gloss Black hexagonal design with Black Ice header bar, Black bowtie emblem and RS badging.
- Antenna, body-color
- Moldings, lower body-side (Painted High Gloss Black with Black Ice insert.)
- Roof rails, Black- Tire, compact spare, T135/70R18, blackwall
- Wheel, spare, 18" (45.7 cm) steel- Tires, P235/55R20 all-season blackwall

---

## Safety

- Seats, front buckets- Seat trim, Perforated Leather-Appointed- Seating, 5-passenger
- Seats, heated driver and front passenger (Vehicles built prior to November 15, 2021 include driver and front passenger heated seats. Certain vehicles built on or after November 15, 2021, will be forced to include (00V) Not Equipped with Driver and Front Passenger Heated Seats, which removes driver and front passenger heated seats. See dealer for details or the window label for the features on a specific vehicle.)
- Seat adjuster, driver 8-way power- Seat adjuster, front passenger 6-way power
- Head restraints, front, 2-way adjustable, up/down
- Head restraints, rear outboard 2-way adjustable, up/down
- Power outlet, 120-volt located on rear of front center console
- USB data ports, 2, one type-A and one type-C located within the instrument panel
- USB data ports, 2, one type-A and one type-C includes SD Card Reader, auxiliary input jack, located within front center storage bin
- USB charging-only ports 2, one type-A and one type-C, located on rear of center console
- Floor mats, carpeted front and rear (Deleted when LPO floor mats or LPO floor liners are ordered.)
- Steering wheel, leather-wrapped 3-spoke
- Steering wheel, heated (Vehicles built prior to November 22, 2021 include heated steering wheel. Certain vehicles built on or after November 22, 2021, will be forced to include (00G) Not Equipped with Heated Steering Wheel, which removes heated steering wheel. See dealer for details or the window label for the features on a specific vehicle.)
- Steering column, manual tilt and telescoping
- Driver Information Center, 8" diagonal multi-color enhanced reconfigurable
- Compass, digital
- Windows, power with driver Express-Up/Down and front passenger and rear seat passengers Express-Down
- Door locks, power programmable with lockout protection
- Keyless Open and Start includes extended range Remote Keyless Entry - Remote Start
- Universal Home Remote includes garage door opener, programmable
- Cruise control, electronic with set and resume speed
- Theft-deterrent system, electrical, unauthorized entry
- Air conditioning, dual-zone automatic climate control with individual climate settings for driver and right-front passenger
- Defogger, rear-window electric- Air filtration system- Air vents, rear console
- Glovebox, lockable electronic
- Cup holders, 2 in front center console and 2 in rear center armrest

- Mirror, inside rearview auto-dimming
- Visors, driver and front passenger illuminated vanity mirrors covered
- Assist handles, front passenger and rear outboard with coat hooks on rear passenger assist handles
- Lighting, interior with front reading lamps, overhead courtesy lamp, dual rear-quarter panel area dome lamps, True White backlit switches, True White pin spot lighting in the bin forward of the shifter and front footwells, LED glove box lighting and backlit USB ports
- Lighting, interior, ambient with pin spot lighting in the map pocket area, True White light pipes on the passenger-side of the instrument panel and below the front door remote handles and LED lighting between the center console cupholders
- Umbrella holders, driver and front passenger doors

---

## Mechanical

- Engine, 3.6L V6, SIDI, DOHC with Variable Valve Timing (VVT) and Active Fuel Management with Stop/Start (308 hp [229 kW] @ 6600 rpm, 270 lb-ft of torque [366 N-m] @ 5000 rpm)
- Transmission, 9-speed automatic, electronically-controlled with overdrive, includes Driver Shift Control
- Axle, 3.49 final drive ratio- Engine control, stop/start system override- Front-wheel drive
- Alternator, 155 amps (Standard on FWD models when (VR2) trailering equipment is not ordered.)
- GVWR, 6001 lbs. (2722 kg)- Suspension, Ride and Handling
- Brakes, 4-wheel antilock, 4-wheel disc- Electronic parking brake
- Tool kit, road emergency- Capless fuel fill
- Exhaust, dual-outlet with rectangular bright tips

---

## Option Packages

### Factory Installed Packages

-  
ENGINE, 3.6L V6, SIDI, DOHC WITH VARIABLE VALVE TIMING (VVT)  
and Active Fuel Management with Stop/Start (308 hp [229 kW] @ 6600 rpm, 270 lb-ft of torque [366 N-m] @ 5000 rpm)

---

Parks Chevrolet, Inc.

[parksdeals.com](http://parksdeals.com)

833-825-2763

615 NC-66 South

Kernersville, NC 27284

© 2023 AutoRevo - All rights reserved. - Powered by AutoRevo