

# 2020 GMC SIERRA 3500 DENALI DURAMAX DIESEL 4X4 LIKE NEW WHEELS TIRES BED & MORE

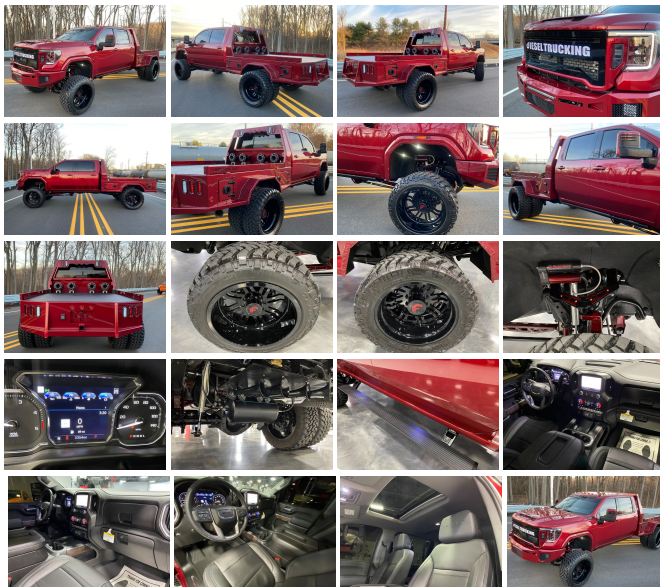
View this car on our website at [njtruckking.com/7062236/ebrochure](http://njtruckking.com/7062236/ebrochure)



Our Price **\$123,900**

## Specifications:

<b>Year:</b>	2020
<b>VIN:</b>	1GT49WEYXLF293335
<b>Make:</b>	GMC SIERRA 3500 DENALI
<b>Model/Trim:</b>	DURAMAX DIESEL 4X4 LIKE NEW WHEELS TIRES BED & MORE
<b>Condition:</b>	Pre-Owned
<b>Body:</b>	Pickup Truck
<b>Exterior:</b>	Red
<b>Engine:</b>	ENGINE, DURAMAX 6.6L TURBO- DIESEL V8, B20-DIESEL COMPATIBLE
<b>Interior:</b>	Black Leather
<b>Mileage:</b>	3,354
<b>Drivetrain:</b>	4 Wheel Drive



2020 GMC SIERRA 3500HD DRW 4WD  
CREW CAB  
DENALI  
~ALL THE OPTIONS~  
6.6L DURAMAX TURBO DIESEL  
AUTOMATIC TRANSMISSION  
( ONLY 3,354 ORIGINAL / ACTUAL MILES )  
PAINT MATCHED BRADFORD BED  
PAINT MATCH  
CUSTOM LIGHTING  
ROCK LIGHTS  
24" FORGIATOS  
38" NITTOS  
MCGAUGHTY'S LIFT KIT  
RESERVOIR SHOCKS  
POWDERCOATED  
SOUND SYSTEM  
MUCH MORE!  
TRUCK IS MINT  
KILLER LOOK TO IT!  
STOCK POWERTRAIN  
BUY IT NOW!  
\$123,900  
CALL / TEXT DEENA 856-693-3181 WITH ANY QUESTIONS

Our Location :



2020 GMC SIERRA 3500 DENALI DURAMAX DIESEL 4X4 LIKE NEW WHEELS TIRES BED & MORE  
King of Cars and Trucks - 856-693-3181 - View this car on our website at [njtruckking.com/7062236/ebrochure](http://njtruckking.com/7062236/ebrochure)

Installed Options

Interior

- Defogger, rear-window electric- Door locks, power
- Floor mats, carpeted front (Unique premium carpet. Deleted when LPO floor liners are ordered.)
- Floor mats, carpeted rear (Unique premium carpet. Deleted when LPO floor liners are ordered.)
- Keyless Open and Start- Mirror, inside rearview auto-dimming
- Power outlet, front auxiliary, 12-volt- Power outlet, rear auxiliary, 12-volt
- Seat trim, Forge Perforated Leather-appointed seats
- Seating, heated driver and front outboard passenger
- Seats, front bucket with center console - Seats, ventilated driver and front passenger
- USB Ports (Inside Console with bucket seats), 2 also includes 1 SD card reader and auxiliary jack
- USB ports, 2 (first row) located on instrument panel
- Window, power front, passenger express up/down- Windows, power rear, express down
- 4G LTE Wi-Fi Hotspot capable (Terms and limitations apply. See onstar.com or dealer for details.)
- Air conditioning, dual-zone automatic climate control- Air vents, rear
- Assist handles, front A-pillar mounted for driver and passenger, rear B-pillar mounted
- Center Console, floor-mounted with cup holders, cell phone storage, power cord management, hanging file folder capability
- Compass, located in instrument cluster- Cruise control, steering wheel-mounted
- Driver Information Center, enhanced, 8" diagonal multi-color digital display includes analog speedometer and tachometer gauges
- Driver memory, recalls driver "presets" for power driver seat and outside mirrors
- Exterior Temperature Display located in radio display
- Floor covering, color-keyed carpeting
- GMC Connected Access capable (Subject to terms. See onstar.com or dealer for details.)
- In-vehicle Trailing App, System includes checklist, trailer maintenance reminders, trailer

Option Packages

Factory Installed Packages

ENGINE, DURAMAX 6.6L TURBO-DIESEL V8, B20-DIESEL  
COMPATIBLE  
(445 hp [332 kW] @ 2800 rpm, 910 lb-ft of torque  
[1220 Nm] @ 1600 rpm) \$9,750

Option Packages Total \$9,750

- security alerts, trailer mileage, tow/haul reminder, trailer electrical diagnostics and Trailer Tire Pressure Monitor System module (Includes trailer tire pressure monitoring alert ONLY when (PTT) trailer tire pressure monitor system is factory ordered and sensors are installed.)
- Power outlet, bed mounted, 120-volt (400 watts shared with (K14) instrument panel mounted power outlet)
- Power outlet, instrument panel, 120-volt (400 watts shared with (KC9) bed mounted power outlet)
- Remote vehicle starter system- Seat adjuster, driver 10-way power including lumbar
- Seat adjuster, passenger 10-way power including lumbar
- Seat, Up-level Rear with Storage Package, 60/40 folding bench for Crew Cab models includes full-length bench seat, seatback storage on left and right side, center fold out armrest with 2 cupholders, full cab width underseat storage, (includes child seat top tether anchor) (Rear seat is leather-appointed.)
- Seats, heated second row outboard seats - Steering column, lock control, electrical
- Steering column, manual Tilt-Wheel and telescoping- Steering wheel audio controls
- Steering wheel, heated- Steering wheel, leather-wrapped
- Theft-deterrent system, unauthorized entry- USB ports, dual, charge-only (2nd row)
- Universal Home Remote- Window, power front, drivers express up/down
- Wireless Charging

---

## Exterior

- Assist steps, chromed tubular, 6" rectangular cab length (factory installed)
- Bed Liner, Spray-on Pickup bedliner with GMC logo (does not include spray-on liner on tailgate due to Black composite inner panel) (Denali logo replaces GMC logo. Not available with any Ship Thrus EXCEPT (VSH), (VTV), (TCH) or (TCE).)
- Headlamps, LED reflector (high intensity) with LED turn signals and LED signature Daytime Running Lamps
- IntelliBeam, automatic high beam on/off (Included and only available with (PDJ) Driver Alert Package II.)
- Tire, spare LT275/70R18 all-terrain, blackwall (Included and only available with (QF9) LT275/65R20 all-terrain, blackwall tires on single rear wheel models.)
- Tires, LT275/65R20 all-terrain, blackwall (Requires single rear wheels.)
- Wheels, 20" (50.8 cm) multi-dimensional Polished aluminum (Requires single rear wheels.)
- Window, power, rear sliding with rear defogger
- BedStep, Black integrated on forward portion of bed on driver and passenger side (Not available with (ZW9) pickup bed delete.)
- Bumper, front, body-color lower- Bumper, rear body-color, with corner steps
- Cargo tie downs (12), fixed, rated at 500 lbs per corner- CornerStep, rear bumper
- Door handles, chrome- Fog lamps, LED- Glass, deep-tinted
- Grille, Signature Denali grille with high gloss Black mesh and Chrome inserts
- LED Cargo Area Lighting located in cargo bed activated with switch on center switch bank or key fob
- LPO, Polished exhaust tip (dealer-installed) (Requires (L8T) 6.6L V8 gas engine. Not included with (L5P) Duramax 6.6L Turbo Diesel V8 engine.)
- Lamps, Smoked Amber LED roof marker, (LED) (Standard with dual rear wheels. Not available with (YF5) California state emissions requirements on single rear wheels.)
- Lamps, cargo area, cab mounted integrated with center high mount stop lamp, with switch in bank on left side of steering wheel
- Mirror caps, chrome
- Mirrors, outside power-adjustable vertical trailering with heated and auto-dimming upper glass, (driver and passenger) lower convex mirrors, turn signal indicators, puddle lamps, perimeter lighting, auxiliary lighting, power folding/extending (extends 3.31" [84.25mm])
- Moldings, beltline, stainless steel- Single Rear Wheels
- Tailgate and bed rail protection caps, top
- Tailgate, GMC MultiPro Tailgate with six functional load/access features
- Tailgate, gate function manual with EZ Lift includes power lock and release, includes hitch area light
- Taillamps, LED signature taillight with LED stop and reverse light
- Tire carrier lock keyed cylinder lock that utilizes same key as ignition and door
- Wheelhouse liners, rear (Not available with dual rear wheel models.)

---

## Safety

- Defogger, rear-window electric- Door locks, power
- Floor mats, carpeted front (Unique premium carpet. Deleted when LPO floor liners are ordered.)
- Floor mats, carpeted rear (Unique premium carpet. Deleted when LPO floor liners are ordered.)
- Keyless Open and Start- Mirror, inside rearview auto-dimming
- Power outlet, front auxiliary, 12-volt- Power outlet, rear auxiliary, 12-volt
- Seat trim, Forge Perforated Leather-appointed seats
- Seating, heated driver and front outboard passenger
- Seats, front bucket with center console - Seats, ventilated driver and front passenger
- USB Ports (Inside Console with bucket seats), 2 also includes 1 SD card reader and auxiliary jack
- USB ports, 2 (first row) located on instrument panel

- Window, power front, passenger express up/down- Windows, power rear, express down
- 4G LTE Wi-Fi Hotspot capable (Terms and limitations apply. See onstar.com or dealer for details.)
- Air conditioning, dual-zone automatic climate control- Air vents, rear
- Assist handles, front A-pillar mounted for driver and passenger, rear B-pillar mounted
- Center Console, floor-mounted with cup holders, cell phone storage, power cord management, hanging file folder capability
- Compass, located in instrument cluster- Cruise control, steering wheel-mounted
- Driver Information Center, enhanced, 8" diagonal multi-color digital display includes analog speedometer and tachometer gauges
- Driver memory, recalls driver "presets" for power driver seat and outside mirrors
- Exterior Temperature Display located in radio display
- Floor covering, color-keyed carpeting
- GMC Connected Access capable (Subject to terms. See onstar.com or dealer for details.)
- In-vehicle Trailing App, System includes checklist, trailer maintenance reminders, trailer security alerts, trailer mileage, tow/haul reminder, trailer electrical diagnostics and Trailer Tire Pressure Monitor System module (Includes trailer tire pressure monitoring alert ONLY when (PTT) trailer tire pressure monitor system is factory ordered and sensors are installed.)
- Power outlet, bed mounted, 120-volt (400 watts shared with (K14) instrument panel mounted power outlet)
- Power outlet, instrument panel, 120-volt (400 watts shared with (KC9) bed mounted power outlet)
- Remote vehicle starter system- Seat adjuster, driver 10-way power including lumbar
- Seat adjuster, passenger 10-way power including lumbar
- Seat, Up-level Rear with Storage Package, 60/40 folding bench for Crew Cab models includes full-length bench seat, seatback storage on left and right side, center fold out armrest with 2 cupholders, full cab width underseat storage, (includes child seat top tether anchor) (Rear seat is leather-appointed.)
- Seats, heated second row outboard seats - Steering column, lock control, electrical
- Steering column, manual Tilt-Wheel and telescoping- Steering wheel audio controls
- Steering wheel, heated- Steering wheel, leather-wrapped
- Theft-deterrent system, unauthorized entry- USB ports, dual, charge-only (2nd row)
- Universal Home Remote- Window, power front, drivers express up/down
- Wireless Charging

## Mechanical

- Engine, 6.6L V8 with Direct Injection and Variable Valve Timing, gasoline (401 hp [299 kW] @ 5200 rpm, 464 lb-ft of torque [629 N-m] @ 4000 rpm)
- Pickup bed includes bed assist step- Transmission, 6-speed automatic, heavy-duty
- Air filter, high-capacity- Air filtration monitoring
- Alternator, 170 amps (Requires (L8T) 6.6L V8 gas engine.)
- Battery, heavy-duty 720 cold-cranking amps/80 Amp-hr maintenance-free with rundown protection and retained accessory power (Included and only available with (L8T) 6.6L V8 gas engine.)
- Brake lining wear indicator- Brakes, 4-wheel antilock, 4-wheel disc with DURALIFE rotors
- Capless Fuel Fill (Requires (L8T) 6.6L gas V8 engine.)
- Cooling, auxiliary external transmission oil cooler- Cooling, external engine oil cooler
- Differential, heavy-duty locking rear- Four wheel drive
- Frame, fully-boxed, hydroformed front section and a fully-boxed stamped rear section
- GVWR, 11,500 lbs. (5216 kg) with single rear wheels (Included and only available with model TK30943 model and (L8T) 6.6L V8 gas engine. Requires single rear wheels.)
- LPO, Chrome recovery hooks (dealer installed)
- Rear axle, 3.73 ratio (Requires (L8T) 6.6L V8 gas engine.)
- Skid Plates protect the oil pan, front axle and transfer case
- Steering, Digital Variable Steering Assist This system automatically adjusts steering based on speed, road conditions, and other inputs to reduce driver effort and fatigue
- Suspension, Off-Road includes twin-tube shocks (Not available with dual rear wheels.)
- Trailer brake controller, integrated
- Transfer case, two-speed active electronic Autotrac with push button control

King of Cars and Trucks

[njtruckking.com](http://njtruckking.com)

856-693-3181

1229 Broadway

Westville, New Jersey 08093

© 2024 AutoRevo - All rights reserved. - Powered by AutoRevo