

2022 Chevrolet Traverse Premier

View this car on our website at parksdeals.com/7061820/ebrochure



Our Price **\$49,355**

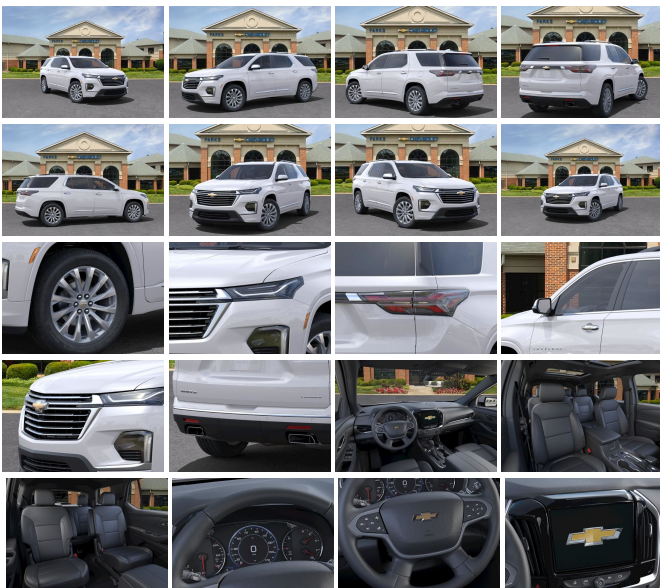
Specifications:

Year:	2022
VIN:	1GNERKKW6NJ138367
Make:	Chevrolet
Stock:	138367
Model/Trim:	Traverse Premier
Condition:	New
Body:	SUV
Exterior:	Iridescent Pearl Tricoat
Engine:	ENGINE, 3.6L V6, SIDI, VVT
Interior:	Jet Black Leather
Mileage:	0
Drivetrain:	Front Wheel Drive
Economy:	City 18 / Highway 27

2022 Chevrolet Traverse Premier Iridescent Pearl Tricoat 3.6L V6 SIDI VVT 9-Speed Automatic

Alloy wheels, Dual SkyScape 2-Panel Power Sunroof, Front License Plate Bracket Mounting Package, Heated 2nd Row Outboard Position Seats, Heated Driver & Front Passenger Seats, Heated Steering Wheel, Heavy-Duty Cooling System, Hitch Guidance w/Hitch View, Navigation System, Power Liftgate, Preferred Equipment Group 1LZ, Rear Park Assist w/Audible Warning, Trailering Assist Guidelines, Trailering Equipment, Ventilated Driver & Front Passenger Seats, We Deliver. 18/27 City/Highway MPG \$1000 - Dealer Trade-in Allowance (Must own and trade a 2015 or newer passenger vehicle to qualify for the Dealer Trade-in Allowance), Allowance is \$1000 above True Car Cash Offer. This offer is based on the current condition of the vehicle and must be appraised at the Dealership to receive the Trade-In Allowance. \$1000 is reflected in the vehicle discount. \$1000 - Dealer Finance Discount (Must qualify and finance with GM Financial, not available with special financing rates or programs.) You may or may not qualify for all rebates. Price does not include tax, tag, and fees. Price does not include any aftermarket products, bodies, or upfits. Price includes applicable rebates:

Contact us online at www.parkschevrolethuntersville.com or give us a call at (704) 209-9961 to have your questions answered, obtain a price quote for this vehicle, or schedule your test drive today. Our prices cannot be beat! Come visit us at 15235 STATESVILLE ROAD HUNTERSVILLE NC.



Our Location :



2022 Chevrolet Traverse Premier

Parks Chevrolet, Inc. - 833-825-2763 - View this car on our website at parksdeals.com/7061820/ebrochure

Installed Options

Interior

- Seats, front bucket- Seating, 7-passenger (2-2-3 seating configuration)
- Seat trim, perforated leather-appointed- Seat adjuster, driver 8-way power
- Seat adjuster, front passenger 6-way power - Seat adjuster, power driver lumbar control
- Seat adjuster, power passenger lumbar control
- Seats, heated driver and front passenger (Vehicles built prior to 11-15-2021 include heated driver and front passenger seats. Certain vehicles built on or after 11-15-2021 will be forced to include (00V) Not Equipped with Heated Driver and Front Passenger Seats, which removes heated driver and front passenger seats. See dealer for details or the window label for the features on a specific vehicle.)
- Seats, ventilated driver and front passenger (Vehicles built prior to 11-15-2021 include Driver and Front Passenger Ventilated Seats. Certain vehicles built on or after 11-15-2021 will be forced to include (00V) Not Equipped with Driver and Front Passenger Ventilated Seats, which removes driver and front passenger ventilated seats. See dealer for details or the window label for the features on a specific vehicle.)
- Memory Package recalls 2 "presets" for power driver seat, outside mirrors and power tilt and telescopic steering column
- Seats, heated rear outboard seating positions (Vehicles built prior to 11-15-2021 include heated rear outboard seats. Certain vehicles built on or after 11-15-2021 will be forced to include (00R) Not Equipped with Heated Rear Outboard Seats, which removes heated rear outboard seats. See dealer for details or the window label for the features on a specific vehicle.)
- Seats, third row 60/40 split-bench, manual-folding
- Head restraints, front, 2-way adjustable
- Head restraints, second and third row outboard, 2-way manual-folding
- Console, front center with 2 cup holders, covered storage bin with storage and removable tray
- Floor mats, color-keyed all rows (Deleted when LPO floor mats or LPO floor liners are ordered.)
- Steering wheel, leather-wrapped, 3-spoke
- Steering wheel, heated (Vehicles built prior to November 22, 2021, include heated steering wheel. Certain vehicles built on or after November 22, 2021, will be forced to include (00G) Not Equipped with Heated Steering Wheel, which removes heated steering wheel. See dealer for details or the window label for the features on a specific vehicle.)

- Steering column, power tilt and telescopic
- Steering wheel controls, mounted controls for audio, phone and cruise
- Display, 8" driver instrument information, customizable, enhanced, multi-color
- Compass display, digital
- Windows, power with driver Express Up/Down and front passenger Express-Down
- Door locks, power programmable with lockout protection
- Keyless Open includes extended range Remote Keyless Entry with lock/unlock feature
- Remote Start- Keyless Start
- Universal Home Remote includes garage door opener, programmable
- Vehicle health management- Adaptive Cruise Control- Remote panic alarm
- Theft-deterrent system, electrical, unauthorized entry- Wireless Phone Charging
- USB ports 2 first row, 2 second row, 2 third row
- Power outlet, 120-volt, located on the rear of center console
- Air conditioning, tri-zone automatic climate control with individual climate settings for driver, right front passenger and rear seat occupants
- Sensor, humidity and windshield temperature- Defogger, rear-window electric
- Heater ducts, 2nd row- Cup holders, 10 total
- Umbrella holders, driver and front passenger doors
- Visors, driver and passenger illuminated vanity mirrors, covered
- Lighting, interior with theater dimming, cargo compartment, reading lights for front seats, second row reading lamps integrated into dome light, door-and tailgate-activated switches and illuminated entry and exit feature
- Cargo storage, bin under rear floor
- Chevrolet Connected Access capable (Subject to terms. See onstar.com or dealer for details.)

Exterior

- Wheels, 20" (50.8 cm) Metallic machined-face aluminum
- Tires, P255/55R20 all-season blackwall- Wheel, spare, 18" (45.7 cm) steel
- Tire, compact spare, T135/70R18, blackwall
- Roof rails, chrome (Not available when (WBL) Redline Edition is ordered.)
- Active Aero Shutters, upper- Headlamps, LED- IntelliBeam, auto high beam control
- Headlamps, automatic on/off- Taillamps, LED- Mirror caps, body-color
- Mirrors, outside heated, power-adjustable, power-folding, body-color driver-side auto-dimming with integrated turn signal indicators
- Glass, deep-tinted- Wipers, front intermittent with washers
- Wiper, rear intermittent with washer- Rear Camera Mirror Washer
- Door handles, Bright chrome- Liftgate, rear power, hands free with emblem projection

Safety

- Seats, front bucket- Seating, 7-passenger (2-2-3 seating configuration)
- Seat trim, perforated leather-appointed- Seat adjuster, driver 8-way power
- Seat adjuster, front passenger 6-way power- Seat adjuster, power driver lumbar control
- Seat adjuster, power passenger lumbar control
- Seats, heated driver and front passenger (Vehicles built prior to 11-15-2021 include heated driver and front passenger seats. Certain vehicles built on or after 11-15-2021 will be forced to include (00V) Not Equipped with Heated Driver and Front Passenger Seats, which removes heated driver and front passenger seats. See dealer for details or the window label for the features on a specific vehicle.)
- Seats, ventilated driver and front passenger (Vehicles built prior to 11-15-2021 include Driver and Front Passenger Ventilated Seats. Certain vehicles built on or after 11-15-2021 will be forced to include (00V) Not Equipped with Driver and Front Passenger Ventilated Seats, which removes driver and front passenger ventilated seats. See dealer for details or the window label for the features on a specific vehicle.)
- Memory Package recalls 2 "presets" for power driver seat, outside mirrors and power tilt and telescopic steering column
- Seats, heated rear outboard seating positions (Vehicles built prior to 11-15-2021 include heated rear outboard seats. Certain vehicles built on or after 11-15-2021 will be forced to include (00R) Not Equipped with Heated Rear Outboard Seats, which removes heated rear outboard seats. See dealer for details or the window label for the features on a specific vehicle.)
- Seats, third row 60/40 split-bench, manual-folding
- Head restraints, front, 2-way adjustable
- Head restraints, second and third row outboard, 2-way manual-folding
- Console, front center with 2 cup holders, covered storage bin with storage and removable tray
- Floor mats, color-keyed all rows (Deleted when LPO floor mats or LPO floor liners are ordered.)
- Steering wheel, leather-wrapped, 3-spoke
- Steering wheel, heated (Vehicles built prior to November 22, 2021, include heated steering wheel. Certain vehicles built on or after November 22, 2021, will be forced to include (00G) Not Equipped with Heated Steering Wheel, which removes heated steering wheel. See dealer for details or the window label for the features on a specific vehicle.)
- Steering column, power tilt and telescopic
- Steering wheel controls, mounted controls for audio, phone and cruise

- Display, 8" driver instrument information, customizable, enhanced, multi-color
- Compass display, digital
- Windows, power with driver Express Up/Down and front passenger Express-Down
- Door locks, power programmable with lockout protection
- Keyless Open includes extended range Remote Keyless Entry with lock/unlock feature
- Remote Start- Keyless Start
- Universal Home Remote includes garage door opener, programmable
- Vehicle health management- Adaptive Cruise Control- Remote panic alarm
- Theft-deterrent system, electrical, unauthorized entry- Wireless Phone Charging
- USB ports 2 first row, 2 second row, 2 third row
- Power outlet, 120-volt, located on the rear of center console
- Air conditioning, tri-zone automatic climate control with individual climate settings for driver, right front passenger and rear seat occupants
- Sensor, humidity and windshield temperature- Defogger, rear-window electric
- Heater ducts, 2nd row- Cup holders, 10 total
- Umbrella holders, driver and front passenger doors
- Visors, driver and passenger illuminated vanity mirrors, covered
- Lighting, interior with theater dimming, cargo compartment, reading lights for front seats, second row reading lamps integrated into dome light, door-and tailgate-activated switches and illuminated entry and exit feature
- Cargo storage, bin under rear floor
- Chevrolet Connected Access capable (Subject to terms. See onstar.com or dealer for details.)

Mechanical

- Engine, 3.6L V6, SIDI, VVT (310 hp [232.0 kW] @ 6800 rpm, 266 lb-ft of torque [361 N-m] @ 2800 rpm)
- Transmission, 9-speed automatic- E10 Fuel capable- Engine control, stop-start system
- Engine control, stop-start system override- Driver Mode Selector
- Axle, 3.49 final drive ratio- Front wheel drive
- Battery, heavy-duty 600 cold-cranking amps- Alternator, 170 amps
- GVWR, 6160 lbs. (2800 kg)- Suspension, Ride and Handling- Steering, power
- Brakes, 4-wheel antilock, 4-wheel disc, 17" front and rear- Electric Parking Brake
- Capless fuel fill- Exhaust, dual-outlet with rectangular bright tips
- Tool kit, road emergency

Option Packages

Factory Installed Packages

ENGINE, 3.6L V6, SIDI, VVT
 (310 hp [232.0 kW] @ 6800 rpm,
 266 lb-ft of torque [361 N-m]
 @ 2800 rpm)

Parks Chevrolet, Inc.

parksdeals.com

833-825-2763

615 NC-66 South

Kernersville, NC 27284

© 2023 AutoRevo - All rights reserved. - Powered by AutoRevo