

parksdeals.com
833-825-2763
615 NC-66 South
Kernersville, NC
27284

Parks Chevrolet,
Inc.

2015 Chevrolet Suburban LT

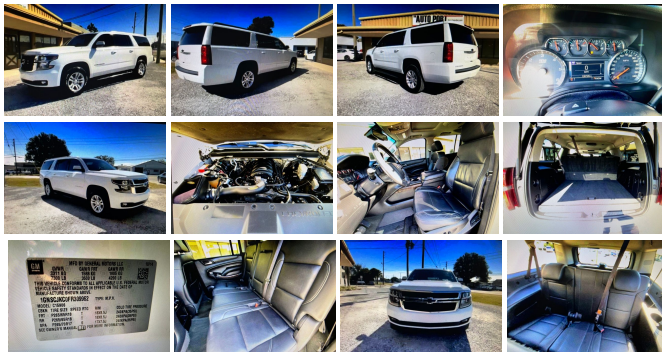
View this car on our website at parksdeals.com/7061443/ebrochure



Our Price **\$32,945**

Specifications:

Year: 2015
VIN: 1GN5CJJKC0FR309962
Make: Chevrolet
Stock: 3K6169
Model/Trim: Suburban LT
Condition: Pre-Owned
Body: SUV
Exterior: Summit White
Engine: ENGINE, 5.3L V8 ECOTEC3 WITH ACTIVE FUEL MANAGEMENT, DIRECT INJECTION AND VARIABLE VALVE TIMING
Interior: Black Leather
Mileage: 106,815
Drivetrain: Rear Wheel Drive
Economy: City 16 / Highway 23



Parks Chevrolet in Kernersville, NC ! We offer low payment - easy financing on everything ! We sell in volume and that saves you money!!

2015 Summit White Chevrolet Suburban 2nd Row 60/40 Split-Folding Manual Bench, 2nd Row Pwr Release 60/40 Split Folding Bench Seat, 3rd Row 60/40 Power Fold Split-Bench, 3rd Row DVD Screen, 3rd Row Manual 60/40 Split-Folding Fold Flat Bench, 9 Speakers, Adjustable pedals, AM/FM radio: SiriusXM, Auto-Dimming Inside Rear-View Mirror, Bose Premium Audio System Feature, Color-Keyed Heated Leather-Wrapped Steering Wheel, Driver & Front Passenger Airbags, Extended-Range Remote Keyless Entry, Floor Console w/Storage Area, Fog Lamps, Forward Collision Alert Sensor Indicator, Front & Rear Parking Assist, Hands Free Power Liftgate, Heated 2nd Row Seats, Heavy-Duty Locking Rear Differential (DISC), Keyless Start Switch, Lane Departure Warning & Safety Alert Seat, Luxury Package, Memory Settings, Passive Entry System, Power Folding & Adjustable Heated Outside Mirrors, Power Liftgate, Power Tilt & Telescoping Steering Column, Power Tilt-Sliding Sunroof w/Express-Open/Close, Power-Adjustable Accelerator & Brake Pedals, Preferred Equipment Group 1LT, Premium Smooth Ride Suspension Package, Rear Cross-Traffic Alert Sensor Indicator, Rear Park Assist, Side Blind Zone Alert w/Lane Change Alert, Universal Home Remote, Wireless Charging.

\$1000 - Dealer Trade-in Allowance (Must own and trade a 2014 or newer passenger vehicle to qualify for the Dealer Trade-in Allowance), Allowance is \$1000 above True Car Cash Offer. This offer is based on the current condition of the vehicle and must be appraised at the Dealership to receive the Trade-In Allowance. \$1000 - Dealer Finance Discount (Must qualify and finance with GM Financial, not available with special financing rates or programs.) Price does not include tax, tag, and fees.

Our Location :



2015 Chevrolet Suburban LT

Parks Chevrolet, Inc. - 833-825-2763 - View this car on our website at parksdeals.com/7061443/ebrochure

Installed Options

Interior

- Seating, front bucket with leather-appointed seating heated seat cushions and seat backs, 10-way power driver and passenger seat includes 6-way power cushions, driver seat 2-position memory, 2-way power lumbar control and power recline
- Seat trim, leather-appointed front seats- Seat adjuster, front passenger 6-way power
- Memory settings recalls presets for driver power seat adjuster and pedals (When (PCK) Luxury Package is ordered, also includes memory presets for outside rearview mirrors and power steering column.)
- Seats, second row 60/40 split-folding bench, manual
- Seat, third row manual 60/40 split-folding bench, fold flat (Not included when (PCK) Luxury Package is ordered.)
- Console, floor with storage area, cup holders, SD card slot and auxiliary jack
- Floor covering, color-keyed carpeting
- Floor mats, color-keyed carpeted first and second row, removable (Included and only available with (B30) color-keyed carpeting, floor covering.)
- Steering column, manual tilt and telescopic- Power outlet, 110-volt
- Power outlets, 5 auxiliary, 12-volt includes outlets in the instrument panel, console, back of console, 1 in 3rd row and 1 in cargo area (when bench seat is ordered, the outlet on the back of the console is lost)
- Mirror, inside rearview auto-dimming
- Conversation mirror (Deleted when (UTT) Theft Protection Package is ordered.)
- Assist handles, all seats
- Lighting, interior with dome light, driver- and passenger-side door switch with delayed entry feature, cargo lights, door handle or Remote Keyless Entry-activated illuminated entry and map lights in front and second seat positions
- Cargo management system- Cargo net
- Remote Keyless Entry, extended-range (Not included when (PCK) Luxury Package is ordered.)
- Door locks, power programmable with lockout protection
- Display, driver instrument information enhanced, multi-color
- Steering wheel controls, mounted audio and cruise controls includes Driver Information Center controls

- Steering wheel, leather-wrapped- Remote vehicle start
- Windows, power, all express down, front express up
- Cruise control, electronic with set and resume speed
- Universal Home Remote includes garage door opener, programmable
- Pedals, power-adjustable for accelerator and brake
- Theft deterrent, electrical, unauthorized entry
- Climate control, tri-zone automatic with individual climate settings for driver, right-front passenger and rear passengers
- Defogger, rear-window electric

Exterior

- Fascia, front body-color- Fascia, rear color-keyed
- Luggage rack side rails, roof-mounted, Black- Assist steps, Black
- Daytime Running Lamps, with automatic exterior lamp control
- Mirrors, outside heated power-adjustable, manual-folding and color keyed driver mirror includes spotter mirror
- Wipers, front intermittent, Rainsense- Wiper, rear intermittent with washer
- Liftgate, power
- Tire carrier, lockable outside spare, winch-type mounted under frame at rear
- Wheel, full-size spare, 17" (43.2 cm) steel- Tire, spare P265/70R17 all-season, blackwall
- Tires, P265/65R18 all-season, blackwall
- Wheels, 18" x 8.5" (45.7 cm x 21.6 cm) aluminum with high-polished finish

Safety

- Seating, front bucket with leather-appointed seating heated seat cushions and seat backs, 10-way power driver and passenger seat includes 6-way power cushions, driver seat 2-position memory, 2-way power lumbar control and power recline
- Seat trim, leather-appointed front seats- Seat adjuster, front passenger 6-way power
- Memory settings recalls presets for driver power seat adjuster and pedals (When (PCK) Luxury Package is ordered, also includes memory presets for outside rearview mirrors and power steering column.)
- Seats, second row 60/40 split-folding bench, manual
- Seat, third row manual 60/40 split-folding bench, fold flat (Not included when (PCK) Luxury Package is ordered.)
- Console, floor with storage area, cup holders, SD card slot and auxiliary jack
- Floor covering, color-keyed carpeting
- Floor mats, color-keyed carpeted first and second row, removable (Included and only available with (B30) color-keyed carpeting, floor covering.)
- Steering column, manual tilt and telescopic- Power outlet, 110-volt
- Power outlets, 5 auxiliary, 12-volt includes outlets in the instrument panel, console, back of console, 1 in 3rd row and 1 in cargo area (when bench seat is ordered, the outlet on the back of the console is lost)
- Mirror, inside rearview auto-dimming
- Conversation mirror (Deleted when (UTT) Theft Protection Package is ordered.)
- Assist handles, all seats
- Lighting, interior with dome light, driver- and passenger-side door switch with delayed entry feature, cargo lights, door handle or Remote Keyless Entry-activated illuminated entry and map lights in front and second seat positions
- Cargo management system- Cargo net
- Remote Keyless Entry, extended-range (Not included when (PCK) Luxury Package is ordered.)
- Door locks, power programmable with lockout protection
- Display, driver instrument information enhanced, multi-color
- Steering wheel controls, mounted audio and cruise controls includes Driver Information Center controls
- Steering wheel, leather-wrapped- Remote vehicle start
- Windows, power, all express down, front express up
- Cruise control, electronic with set and resume speed
- Universal Home Remote includes garage door opener, programmable
- Pedals, power-adjustable for accelerator and brake
- Theft deterrent, electrical, unauthorized entry
- Climate control, tri-zone automatic with individual climate settings for driver, right-front passenger and rear passengers
- Defogger, rear-window electric

Mechanical

- Steering, power- Suspension, rear multi-link with coil springs
- Suspension, front coil-over-shock with stabilizer bar- GVWR, 7300 lbs. (3311 kg)
- Trailering equipment includes trailering hitch platform, 7-wire harness with independent fused trailering circuits mated to a 7-way sealed connector and 2" trailering receiver
- Alternator, 150 amps- Battery, 720 cold cranking amps with 80 amp hour rating
- Cooling, auxiliary transmission oil cooler, heavy-duty air-to-oil
- Cooling, external engine oil cooler, heavy-duty air-to-oil integral to driver side of radiator

- Rear wheel drive- Differential, heavy-duty locking rear
- Suspension Package, Premium Smooth Ride (Not available with (NHT) Max Trailering Package.)
- Rear axle, 3.08 ratio (Not available with (NHT) Max Trailering Package.)
- Transmission, 6-speed automatic, electronically controlled with overdrive and tow/haul mode
- Engine, 5.3L V8 EcoTec3 with Active Fuel Management, Direct Injection and Variable Valve Timing includes aluminum block construction (355 hp [265 kW] @ 5600 rpm, 383 lb-ft of torque [518 N-m] @ 4100 rpm)

Option Packages

Factory Installed Packages

-
ENGINE, 5.3L V8 ECOTEC3 WITH
ACTIVE FUEL MANAGEMENT, DIRECT
INJECTION AND VARIABLE VALVE
TIMING

includes aluminum block
construction (355 hp [265 kW]
@ 5600 rpm, 383 lb-ft of
torque [518 N-m] @ 4100 rpm)

Parks Chevrolet, Inc.

parksdeals.com

833-825-2763

615 NC-66 South

Kernersville, NC 27284

© 2022 AutoRevo - All rights reserved. - Powered by AutoRevo