

parksdeals.com  
833-825-2763  
615 NC-66 South  
Kernersville, NC  
27284

Parks Chevrolet,  
Inc.

## 2022 Chevrolet Silverado 1500 LTD RST

View this car on our website at [parksdeals.com/7061426/ebrochure](https://parksdeals.com/7061426/ebrochure)



Our Price **\$54,335**

Retail Value **\$55,335**

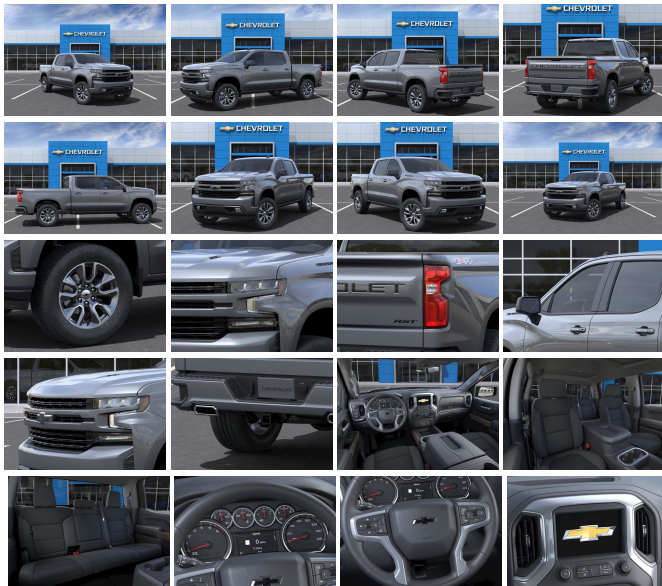
**Specifications:**

**Year:** 2022  
**VIN:** 1GCUYEEL9NZ202882  
**Make:** Chevrolet  
**Stock:** 202882  
**Model/Trim:** Silverado 1500 LTD RST  
**Condition:** New  
**Body:** Pickup Truck  
**Exterior:** Satin Steel Metallic  
**Engine:** ENGINE, 6.2L ECOTEC3 V8  
**Interior:** Jet Blk Clth Cloth  
**Mileage:** 0  
**Drivetrain:** 4 Wheel Drive  
**Economy:** City 14 / Highway 18

2022 Chevrolet Silverado 1500 RST Satin Steel Metallic EcoTec3 6.2L V8 4WD 10-Speed Automatic

10-Speed Automatic, 4WD, Black Cloth, 10-Way Power Driver Seat w/Lumbar, 12-Volt Rear Auxiliary Power Outlet, 2 USB Ports (First Row), 4.2" Diagonal Color Display Driver Info Center, All-Star Edition, Apple CarPlay/Android Auto, Auto-Locking Rear Differential, Black Name Plates (LPO), Bluetooth?? For Phone, Body Color Grille, Chevrolet Connected Access Capable, Cloth Rear Seat w/Storage Package, Color-Keyed Carpeting Floor Covering, Convenience Package, Convenience Package w/Buckets Seats, Dark Essentials Package (LPO), Deep-Tinted Glass, Dual-Zone Automatic Climate Control, Electric Rear-Window Defogger, Electronic Cruise Control, EZ Lift Power Lock & Release Tailgate, Floor Mounted Center Console, Front Bucket Seats, Front Frame-Mounted Black Recovery Hooks, Front LED Fog Lamps, Front Rubberized Vinyl Floor Mats, Heated Driver & Front Outboard Passenger Seats, Heated Steering Wheel, High Gloss Black Mirror Caps, Hitch Guidance, Keyless Open & Start, Leather Wrapped Steering Wheel, LED Cargo Area Lighting, Manual Tilt/Telescoping Steering Column, OnStar & Chevrolet Connected Services Capable, Power Door Locks, Power Front Windows w/Driver Express Up/Down, Power Front Windows w/Passenger Express Down, Power Rear Windows w/Express Down, Preferred Equipment Group 1SP, Rear 60/40 Folding Bench Seat (Folds Up), Rear Dual USB Charging-Only Ports, Rear Rubberized-Vinyl Floor Mats, Rear Vision Camera, Remote Vehicle Starter System, Standard Tailgate, Steering Wheel Audio Controls, Theft Deterrent System (Unauthorized Entry), Trailering Package, Wi-Fi Hot Spot Capable.

Contact us online at [www.parkscharlotte.com](http://www.parkscharlotte.com) or give us a call at (704) 288-0662 to have your questions answered, obtain a price quote for this vehicle, or schedule your test drive today. Our prices cannot be beat! Come visit us at 8530 IKEA BLVD CHARLOTTE NC. Price excludes administrative, origination, documentary, procurement and/or other administrative fee. You may or may not qualify for all rebates. Price does not include tax, tag, and fees. Price does not include any aftermarket products, bodies, or upfits. Price includes applicable rebates:\$500 - Customer Cash. Exp. 04/04/2022 \$500 - Purchase Bonus Cash. Exp. 04/04/2022



## Our Location :



## 2022 Chevrolet Silverado 1500 LTD RST

Parks Chevrolet, Inc. - 833-825-2763 - View this car on our website at [parksdeals.com/7061426/ebrochure](https://parksdeals.com/7061426/ebrochure)

## Installed Options

### Interior

- Seats, front 40/20/40 split-bench with covered armrest storage and under-seat storage (lockable) (Not available with (PCH) Convenience Package with Bucket Seats.)
- Seat trim, Cloth- Seat adjuster, driver 10-way power including lumbar
- Seat adjuster, passenger 4-way manual
- Seating, heated driver and front outboard passenger (Vehicles built prior to 11-15-2021 include heated driver and front outboard passenger seats. Certain vehicles built on or after 11-15-2021 will be forced to include (00V) Not Equipped with Heated or Ventilated Front Seats, which removes heated front seats. See dealer for details or the window label for the features on a specific vehicle. Feature will not function on certain models without dealer retrofit, expected late Q2, 2022, see dealer for details.) (Vehicles built prior to 11-15-2021 include heated driver and front outboard passenger seats. Certain vehicles built on or after 11-15-2021 will be forced to include (00V) Not Equipped with Heated or Ventilated Front Seats, which removes heated front seats. See dealer for details or the window label for the features on a specific vehicle. Feature will not function on certain models without dealer retrofit, expected late Q2, 2022, see dealer for details.)
- Seat, rear 60/40 folding bench (folds up), 3-passenger (includes child seat top tether anchor)
- Seat, Cloth Rear with Storage Package 60/40 folding bench for Crew Cab models, includes seatback storage on left and right side, center fold out armrest with 2 cupholders, (includes child seat top tether anchor)
- Floor covering, color-keyed carpeting
- Floor mats, rubberized vinyl, front (Deleted when (BKF) Floor liners or LPO floor liners are ordered.)
- Floor mats, rubberized-vinyl rear (Deleted when (BKF) Floor liners or LPO floor liners are ordered.)
- Steering wheel, leather-wrapped
- Steering wheel, heated (Vehicles built prior to 12-6-2021 include heated steering wheel. Vehicles built on or after 12-6-2021 will be forced to include (00G) Not Equipped with Heated Steering Wheel, which removes the heated steering wheel. See dealer for details or the window label for the features on a specific vehicle.)
- Steering wheel audio controls- Steering column, manual tilt and telescoping

- Instrument cluster, 6-gauge cluster featuring speedometer, fuel level, engine temperature, tachometer, voltage and oil pressure
- Driver Information Center, 4.2" diagonal color display includes driver personalization
- Exterior Temperature Display located in radio display
- Compass located in instrument cluster- Rear Seat Reminder
- Window, power front, drivers express up/down
- Window, power front, passenger express down- Windows, power rear, express down
- Door locks, power- Remote vehicle starter system- Keyless Open and Start
- Cruise control, electronic with set and resume speed, steering wheel-mounted
- Theft-deterrent system, unauthorized entry- Power outlet, front auxiliary, 12-volt
- USB ports, 2 (first row) located on instrument panel- Power outlet, rear auxiliary, 12-volt
- USB ports, dual, charge-only (2nd row)
- Air conditioning, dual-zone automatic climate control- Air vents, rear, heating/cooling
- Defogger, rear-window electric- Mirror, inside rearview, manual tilt
- Assist handles front A-pillar mounted for driver and passenger, rear B-pillar mounted
- Chevrolet Connected Access capable (Subject to terms. See onstar.com or dealer for details.)

---

## Exterior

- Wheels, 18" x 8.5" (45.7 cm x 21.6 cm) Bright Silver painted aluminum
- Tires, 265/65R18SL all-season, blackwall- Tire, spare 265/70R17SL all-season, blackwall
- Wheel, 17" x 8" (43.2 cm x 20.3 cm) full-size, steel spare
- Tire carrier lock, keyed cylinder lock that utilizes same key as ignition and door
- Bumper, front (Body-color)- Bumper, rear (Body-color)- CornerStep, rear bumper
- Recovery hooks, front, frame-mounted, Black
- Cargo tie downs (12), fixed rated at 500 lbs per corner
- Grille (Body color bars with high gloss Black mesh inserts.) - Black Bowtie, (front grille)
- Headlamps, LED reflector with LED signature Daytime Running Lamps
- Fog lamps, front, LED
- Lamps, cargo area, cab mounted integrated with center high mount stop lamp, with switch in bank on left side of steering wheel
- LED Cargo Area Lighting located in pickup bed, activated with switch on center switch bank or key fob
- Taillamps, LED with signature
- Mirrors, outside heated power-adjustable (When (PQB) Safety Package is ordered, includes Perimeter Lighting.)
- Mirror caps, painted (High gloss Black. Not available with (DPO) trailering mirrors.)
- Glass, deep-tinted- Door handles, body-color- Tailgate and bed rail protection cap, top
- Tailgate, standard
- Tailgate, gate function manual with EZ Lift includes power lock and release

---

## Safety

- Seats, front 40/20/40 split-bench with covered armrest storage and under-seat storage (lockable) (Not available with (PCH) Convenience Package with Bucket Seats.)
- Seat trim, Cloth- Seat adjuster, driver 10-way power including lumbar
- Seat adjuster, passenger 4-way manual
- Seating, heated driver and front outboard passenger (Vehicles built prior to 11-15-2021 include heated driver and front outboard passenger seats. Certain vehicles built on or after 11-15-2021 will be forced to include (00V) Not Equipped with Heated or Ventilated Front Seats, which removes heated front seats. See dealer for details or the window label for the features on a specific vehicle. Feature will not function on certain models without dealer retrofit, expected late Q2, 2022, see dealer for details.) (Vehicles built prior to 11-15-2021 include heated driver and front outboard passenger seats. Certain vehicles built on or after 11-15-2021 will be forced to include (00V) Not Equipped with Heated or Ventilated Front Seats, which removes heated front seats. See dealer for details or the window label for the features on a specific vehicle. Feature will not function on certain models without dealer retrofit, expected late Q2, 2022, see dealer for details.)
- Seat, rear 60/40 folding bench (folds up), 3-passenger (includes child seat top tether anchor)
- Seat, Cloth Rear with Storage Package 60/40 folding bench for Crew Cab models, includes seatback storage on left and right side, center fold out armrest with 2 cupholders, (includes child seat top tether anchor)
- Floor covering, color-keyed carpeting
- Floor mats, rubberized vinyl, front (Deleted when (BKF) Floor liners or LPO floor liners are ordered.)
- Floor mats, rubberized-vinyl rear (Deleted when (BKF) Floor liners or LPO floor liners are ordered.)
- Steering wheel, leather-wrapped
- Steering wheel, heated (Vehicles built prior to 12-6-2021 include heated steering wheel. Vehicles built on or after 12-6-2021 will be forced to include (00G) Not Equipped with Heated Steering Wheel, which removes the heated steering wheel. See dealer for details or the window label for the features on a specific vehicle.)
- Steering wheel audio controls- Steering column, manual tilt and telescoping
- Instrument cluster, 6-gauge cluster featuring speedometer, fuel level, engine temperature, tachometer, voltage and oil pressure
- Driver Information Center, 4.2" diagonal color display includes driver personalization

- Exterior Temperature Display located in radio display
- Compass located in instrument cluster- Rear Seat Reminder
- Window, power front, drivers express up/down
- Window, power front, passenger express down- Windows, power rear, express down
- Door locks, power- Remote vehicle starter system- Keyless Open and Start
- Cruise control, electronic with set and resume speed, steering wheel-mounted
- Theft-deterrent system, unauthorized entry- Power outlet, front auxiliary, 12-volt
- USB ports, 2 (first row) located on instrument panel- Power outlet, rear auxiliary, 12-volt
- USB ports, dual, charge-only (2nd row)
- Air conditioning, dual-zone automatic climate control- Air vents, rear, heating/cooling
- Defogger, rear-window electric- Mirror, inside rearview, manual tilt
- Assist handles front A-pillar mounted for driver and passenger, rear B-pillar mounted
- Chevrolet Connected Access capable (Subject to terms. See onstar.com or dealer for details.)

## Mechanical

- Engine, 5.3L EcoTec3 V8 (355 hp [265 kW] @ 5600 rpm, 383 lb-ft of torque [518 Nm] @ 4100 rpm); featuring available Dynamic Fuel Management that enables the engine to operate in 17 different patterns between 2 and 8 cylinders, depending on demand, to optimize power delivery and efficiency (Base engine on C\*18\*43 Crew Cab models.)
- Transmission, 8-speed automatic, electronically controlled with overdrive and tow/haul mode. Includes Cruise Grade Braking and Powertrain Grade Braking (Included and only available with (L3B) 2.7L Turbo engine or (L84) 5.3L EcoTec3 V8 engine.)
- Rear axle, 3.23 ratio (Included and only available with (L84) 5.3L EcoTec3 V8 engine, (L87) 6.2L EcoTec3 V8 engine or (LM2) Duramax 3.0L Turbo-Diesel I6 engine.)
- Durabed, pickup bed
- GVWR, 7100 lbs. (3221 kg) (Requires Crew Cab 4WD model with (L84) 5.3L EcoTec3 V8 engine or (L87) 6.2L EcoTec3 V8 engine without (NHT) Max Trailering Package.)
- Automatic Stop/Start (Standard on vehicles equipped with (MQE) 8-speed automatic transmission or (LM2) Duramax 3.0L Turbo-Diesel I6 engine. Vehicles with a V8 engine and (MQB) 10-speed automatic will have (NSS) Not Equipped with Automatic Stop/Start, which removes Automatic Stop/Start and its content. See dealer for details.)
- Transfer case, single speed electronic Autotrac with push button control (4WD models only)
- Auto-locking rear differential- Four wheel drive
- Cooling, external engine oil cooler (Included and only available with (L84) 5.3L EcoTec3 V8 engine or (L87) 6.2L EcoTec3 V8 engine.)
- Cooling, auxiliary external transmission oil cooler (Included and only available with V8 engines.)
- Battery, heavy-duty 730 cold-cranking amps/80 Amp-hr, maintenance-free with rundown protection and retained accessory power
- Alternator, 170 amps (Included and only available with (L84) 5.3L EcoTec3 V8 engine or (L87) 6.2L EcoTec3 V8 engine. Not available with (NHT) Max Trailering Package, (LM2) Duramax 3.0L Turbo-Diesel I6 engine or (L3B) 2.7L Turbo engine.)
- Frame, fully-boxed, hydroformed front section
- Steering, Electric Power Steering (EPS) assist, rack-and-pinion
- Brakes, 4-wheel antilock, 4-wheel disc with DURALIFE rotors- Brake lining wear indicator
- Capless Fuel Fill- Exhaust, single outlet

## Option Packages

### Factory Installed Packages

-	
ENGINE, 6.2L ECOTEC3 V8 (420 hp [313 kW] @ 5600 rpm, 460 lb-ft of torque [624 Nm] @ 4100 rpm); featuring Dynamic Fuel Management that enables the engine to operate in 17 different patterns between 2 and 8 cylinders, depending on demand, to optimize power delivery and efficiency	\$2,495
-	

Option Packages Total	\$2,495
-----------------------	---------

---

Parks Chevrolet, Inc.

[parksdeals.com](https://parksdeals.com)

833-825-2763

615 NC-66 South

Kernersville, NC 27284

© 2023 AutoRevo - All rights reserved. - Powered by [AutoRevo](#)