



2022 Chevrolet Traverse LT Cloth

Our Price \$38,090

Retail Value ~~\$38,590~~

View this vehicle on our website at parksdeals.com

Parks Chevrolet, Inc.

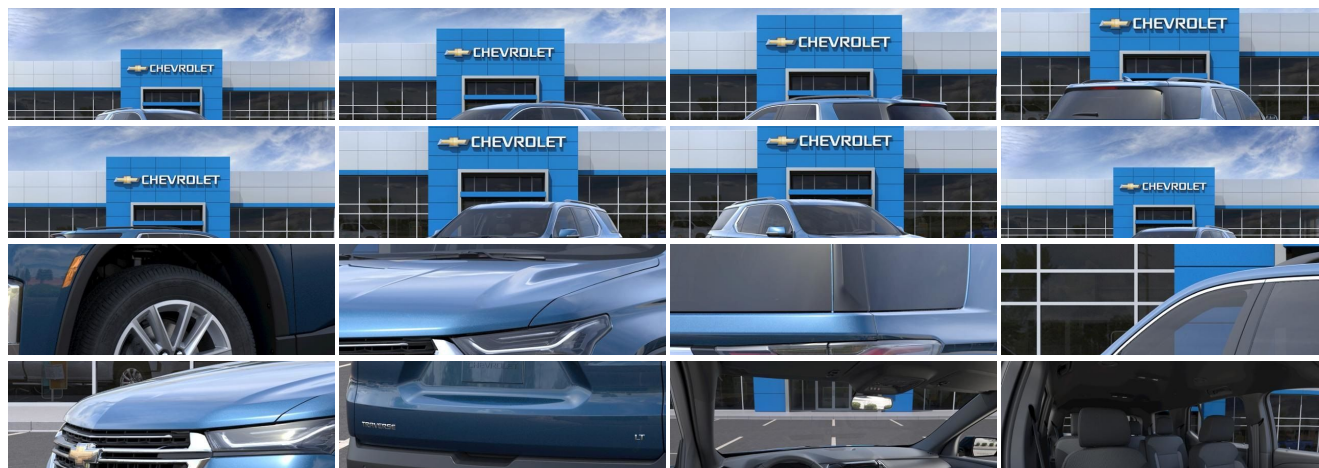
[833-825-2763](tel:833-825-2763)

615 NC-66 South, Kernersville, NC 27284

[Photos](#)

[Details](#)

[Contact](#)





Specifications:

Year:	2022
VIN:	1GNERGKW9NJ141485
Make:	Chevrolet
Stock:	141485
Model/Trim:	Traverse LT Cloth
Condition:	New
Body:	SUV
Exterior:	Northsky Blue Metallic
Engine:	ENGINE, 3.6L V6, SIDI, VVT
Interior:	Jet Blk Premium Clth Cloth
Mileage:	0
Drivetrain:	Front Wheel Drive
Economy:	City 18 / Highway 27

Vehicle Description

2022 Chevrolet Traverse LT Northsky Blue Metallic 3.6L V6 SIDI VVT FWD 9-Speed Automatic

4.2" Multi-Color Enhanced Driver Instrument Display, Convenience & Driver Confidence Package, Heated Driver & Front Passenger Seats, Preferred Equipment Group 1LT, Radio: Chevrolet Infotainment 3 Plus System, Rear Park Assist w/Audible Warning, Rear Power Liftgate, Remote Start, SiriusXM w/360L, Universal Home Remote.

Contact us online at www.parkscharlotte.com or give us a call at (704) 288-0662 to have your questions answered, obtain a price quote for this vehicle, or schedule your test drive today. Our prices cannot be beat! Come visit us at 8530 IKEA BLVD CHARLOTTE NC. Price excludes administrative, origination, documentary, procurement and/or other administrative fee. You may or may not qualify for all rebates. Price does not include tax, tag, and fees. Price does not include any aftermarket products, bodies, or upfits. Price includes applicable rebates:\$500 - Customer Cash. Exp. 04/04/2022

Installed Options

Interior

- Seats, front bucket - Seating, 7-passenger (2-2-3 seating configuration)
- Seat trim, premium cloth- Seat adjuster, driver 8-way power
- Seat adjuster, power driver lumbar control
- Seats, third row 60/40 split-bench, manual-folding
- Floor mats, color-keyed all rows (Deleted when LPO floor mats or LPO floor liners are ordered.)
- Steering wheel controls, mounted controls for audio, phone and cruise
- Door locks, power programmable with lockout protection
- Keyless Open includes extended range Remote Keyless Entry with lock/unlock feature
- Cruise control, electronic with set and resume speed - Remote panic alarm
- Theft-deterrent system, electrical, unauthorized entry
- Seat adjuster, front passenger 4-way manual- Head restraints, front, 2-way adjustable
- Head restraints, second and third row outboard, 2-way manual-folding
- Console, front center with 2 cup holders, covered storage bin with storage and removable tray
- Steering wheel, leather-wrapped, 3-spoke- Steering column, tilt
- Display, 3.5" driver instrument information, monochromatic (FWD model only.)
- Compass display, digital
- Windows, power with driver Express Up/Down and front passenger Express-Down
- Keyless Start- Vehicle health management- Wireless Phone Charging
- USB ports 2 first row, 2 second row, 2 third row
- Air conditioning, tri-zone automatic climate control with individual climate settings for driver, right front passenger and rear seat occupants
- Sensor, humidity and windshield temperature- Defogger, rear-window electric
- Heater ducts, 2nd row- Cup holders, 10 total
- Umbrella holders, driver and front passenger doors

Option Packages

Factory Installed Packages

ENGINE, 3.6L V6, SIDI, VVT
(310 hp [232.0 kW] @ 6800 rpm, 266 lb-ft of
torque [361 N-m] @ 2800 rpm)

- Mirror, inside rearview manual day/night
- Visors, driver and passenger illuminated vanity mirrors, covered
- Lighting, interior with theater dimming, cargo compartment, reading lights for front seats, second row reading lamps integrated into dome light, door-and tailgate-activated switches and illuminated entry and exit feature
- Cargo storage, bin under rear floor
- Chevrolet Connected Access capable (Subject to terms. See onstar.com or dealer for details.)

Exterior

- Wheels, 18-inch (45.7 cm) Bright Silver-painted aluminum
- Tires, P255/65R18 all-season blackwall- IntelliBeam, auto high beam control
- Wheel, spare, 18" (45.7 cm) steel- Tire, compact spare, T135/70R18, blackwall
- Roof rails, Black- Active Aero Shutters, upper and lower- Moldings, Black bodyside
- Headlamps, LED- Headlamps, automatic on/off- Taillamps, LED
- Mirror caps, body-color
- Mirrors, outside heated, power-adjustable manual-folding, body-color, with turn signal indicators
- Glass, deep-tinted- Wipers, front intermittent with washers
- Wiper, rear intermittent with washer- Door handles, body-color
- Liftgate, rear manual (FWD model only.)

Safety

- Seats, front bucket- Seating, 7-passenger (2-2-3 seating configuration)
- Seat trim, premium cloth- Seat adjuster, driver 8-way power
- Seat adjuster, power driver lumbar control
- Seats, third row 60/40 split-bench, manual-folding
- Floor mats, color-keyed all rows (Deleted when LPO floor mats or LPO floor liners are ordered.)
- Steering wheel controls, mounted controls for audio, phone and cruise
- Door locks, power programmable with lockout protection
- Keyless Open includes extended range Remote Keyless Entry with lock/unlock feature
- Cruise control, electronic with set and resume speed- Remote panic alarm
- Theft-deterrent system, electrical, unauthorized entry
- Seat adjuster, front passenger 4-way manual- Head restraints, front, 2-way adjustable
- Head restraints, second and third row outboard, 2-way manual-folding
- Console, front center with 2 cup holders, covered storage bin with storage and removable tray
- Steering wheel, leather-wrapped, 3-spoke- Steering column, tilt
- Display, 3.5" driver instrument information, monochromatic (FWD model only.)
- Compass display, digital
- Windows, power with driver Express Up/Down and front passenger Express-Down
- Keyless Start- Vehicle health management- Wireless Phone Charging
- USB ports 2 first row, 2 second row, 2 third row
- Air conditioning, tri-zone automatic climate control with individual climate settings for driver, right front passenger and rear seat occupants
- Sensor, humidity and windshield temperature- Defogger, rear-window electric
- Heater ducts, 2nd row- Cup holders, 10 total
- Umbrella holders, driver and front passenger doors
- Mirror, inside rearview manual day/night
- Visors, driver and passenger illuminated vanity mirrors, covered
- Lighting, interior with theater dimming, cargo compartment, reading lights for front seats, second row reading lamps integrated into dome light, door-and tailgate-activated switches and illuminated entry and exit feature
- Cargo storage, bin under rear floor
- Chevrolet Connected Access capable (Subject to terms. See onstar.com or dealer for details.)

Mechanical

- Transmission, 9-speed automatic
- Engine, 3.6L V6, SIDI, VVT (310 hp [232.0 kW] @ 6800 rpm, 266 lb-ft of torque [361 N-m] @ 2800 rpm)
- E10 Fuel capable- Engine control, stop-start system
- Engine control, stop-start system override- Driver Mode Selector
- Axle, 3.49 final drive ratio- Front wheel drive
- Battery, heavy-duty 600 cold-cranking amps- Alternator, 170 amps
- GVWR, 6160 lbs. (2800 kg)- Suspension, Ride and Handling- Steering, power
- Brakes, 4-wheel antilock, 4-wheel disc, 17" front and rear- Electric Parking Brake
- Capless fuel fill- Exhaust, dual-outlet with circular bright tips- Tool kit, road emergency

Parks Chevrolet, Inc.

Parks Chevrolet, Inc.

View this car on our website at parksdeals.com/7061423

Website: parksdeals.com

Phone: [833-825-2763](tel:833-825-2763)

Map: [615 NC-66 South, Kernersville, NC 27284](#)

