



2014 Bentley Continental GT Speed

Website Price \$87,995

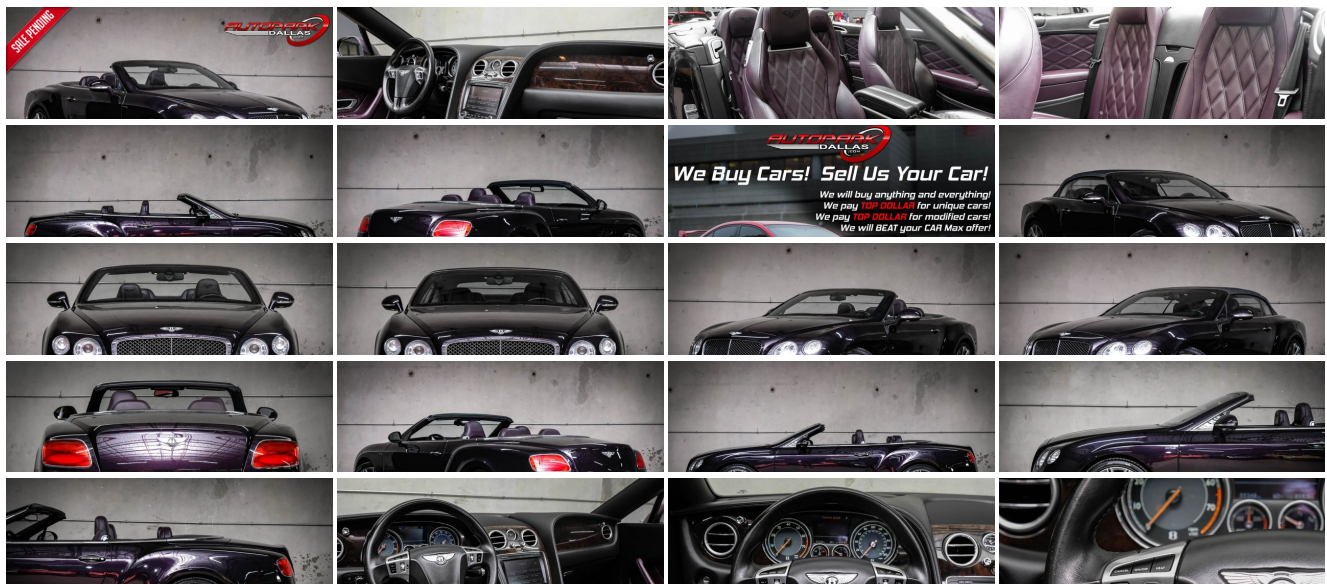
View this vehicle on our website at autoparkdallas.com



(214) 945-2601

2061 S Stemmons Fwy , Lewisville, TX 75067

- Photos
- Details
- Contact



Specifications:

Year:	2014
VIN:	SCBGC3ZA5EC095148
Make:	Bentley
Model/Trim:	Continental GT Speed
Condition:	Pre-Owned
Body:	Convertible
Exterior:	Damson Metallic
Engine:	Engine: Twin-Turbocharged 6.0L W12
Interior:	Damson Leather
Transmission:	Transmission: Close Ratio ZF 8-Speed Automatic w/Quickshift -inc: steering column mounted gearshift paddles
Mileage:	55,338
Drivetrain:	All Wheel Drive
Economy:	City 12 / Highway 20

Vehicle Description

AutoPark Dallas is thrilled to offer you this Stunning Damson Metallic 2014 Bentley Continental GT Speed for sale! Our Continental here at APD is a GT Speed equipped with the powerful Bi-Turbo 6.0L W12 Engine, a unique color combo of Damson Metallic on Damson Leather, and comes with TONS of Factory Options that make the ride even better! Bentley showed the world that even heavy luxury can be a work of art that can still put serious pedal to the metal! If you're in the market for a Bentley or just an amazing Exotic ride then look no further than this Continental GT Speed parked in our indoor 16,000 Sq Ft Showroom located in Dallas, Texas amongst our inventory of 100+ other Performance / Modified and Luxury Vehicles!

2014 Bentley Continental GT Speed

* Clean CarFax !*

* Beautiful Color Combo !*

* Convenience Specification Package !*

* NAIM Premium Audio Package !*

Damson Metallic Exterior

Black Cloth Convertible Top

Damson Leather Interior

Hands Free Bluetooth

Navigation

Heated & Cooled Front Row Seats

Front Seats Lumbar Massage

Push Button Start

Front & Rear Reverse Sensors

Adaptive Cruise Control

Back-Up Camera

Dual Climate Control

Driver & Passenger Memory Seats

Powered Convertible Top

Front / Rear Independent Air Suspension

Universal Garage Opener

Steering Wheel Mounted Controls
Twin-Turbocharged 6.0L W12 Engine
8-Speed Automatic Transmission
All Wheel Drive
Professionally Detailed!
Well Maintained!
*** Free CarFax Report !***
AND SO MUCH MORE!!!

Financing is available!

Check out our Payment Calculator to get an estimate on your monthly payments!

OR

Get pre-approved in no time by filling out a credit application on the 'Finance' section of our website!

We also offer MANY different Extended Warranty options!

Check out our Google Reviews by ***Clicking*** this LINK!

Referrals and Testimonials is what our business is built on!

The team here at AutoPark Dallas, is dedicated to offering a level of customer service not usually found in the automobile industry. Thanks to years of extensive car buying / selling experience, we pursue quality used and new vehicles that are hand-picked from factory sources. Our love for automobiles and dislike of traditional dealership tactics is what motivates us to provide the service we do! The pride we take in continuing this service long after the vehicle has been delivered is what we strive for! Looking forward to making every effort to see that our customer is completely satisfied and a friend for life!

Pre-purchase inspections are always welcomed!

We also offer airport pick-up, competitive financing options, free CarFax Reports, Car Shipping nationwide, Extended Warranty plans, and so much more!

Trade-In(s) are always accepted or sell us your used car (MODIFIED OR NOT)! Please call or text for more information about Trade-Ins or selling your car to us @ (214) 945-2601!

#(214) 945-2601

Call or Text **Anytime!**

Se habla Español

WE BUY CARS!

WWW.AUTOPARKDALLAS.COM

Installed Options

Option Packages

Interior

- 12-Way Power Passenger Seat -inc: Power Recline, Height Adjustment, Fore/Aft Movement, Cushion Tilt, Power 4-Way Lumbar Support and Power Rear Seat Easy Entry
- 14-Way Power Driver Seat -inc: Power Recline, Height Adjustment, Cushion Extension, Fore/Aft Movement, Cushion Tilt, Power 4-Way Lumbar Support and Power Rear Seat Easy Entry
- 3 12V DC Power Outlets- Air Filtration- Analog Appearance
- Bench Front Facing Rear Seat - Bucket Front Seats w/Power 4-Way Driver Lumbar
- Cargo Space Lights- Carpet Floor Trim and Carpet Trunk Lid/Rear Cargo Door Trim
- Compass- Cruise Control w/Steering Wheel Controls
- Day-Night Auto-Dimming Rearview Mirror- Delayed Accessory Power
- Driver And Passenger Door Bins
- Driver And Passenger Heated-Cushion, Driver And Passenger Heated-Seatback
- Driver And Passenger Visor Vanity Mirrors w/Driver And Passenger Illumination
- Driver Foot Rest- Dual Zone Front Automatic Air Conditioning- Engine Immobilizer
- FOB Controls -inc: Cargo Access, Sunroof/Convertible Roof and Remote Engine Start
- Fade-To-Off Interior Lighting
- Fixed Front Head Restraints and Fixed Rear Head Restraints
- Front Center Armrest w/Storage and Rear Center Armrest w/Pass-Thru
- Front Cupholder- Front Map Lights- Full Carpet Floor Covering- Full Cloth Headliner
- Full Floor Console w/Covered Storage, Mini Overhead Console and 3 12V DC Power Outlets
- Garage Door Transmitter
- Gauges -inc: Speedometer, Odometer, Engine Coolant Temp, Tachometer, Trip Odometer and Trip Computer
- HVAC -inc: Underseat Ducts- Illuminated Locking Glove Box
- Integrated Navigation System w/Voice Activation
- Interior Trim -inc: Deluxe Sound Insulation, Genuine Wood Instrument Panel Insert, Aluminum Door Panel Insert, Aluminum/Genuine Wood Console Insert, Chrome/Aluminum Interior Accents, Leather Upholstered Dashboard and Genuine Wood Overhead Console Insert
- Leather Bucket Seats- Leather Door Trim Insert
- Leather Steering Wheel w/Auto Tilt-Away- Leather/Chrome Gear Shifter Material
- Memory Settings -inc: Driver And Passenger Seats, Door Mirrors, Steering Wheel, Audio, HVAC and Seatbelts
- Outside Temp Gauge- Perimeter Alarm
- Power 1st Row Windows w/Front And Rear 1-Touch Up/Down
- Power Door Locks w/Autolock Feature- Power Rear Windows
- Power Tilt/Telescoping Steering Column
- Proximity Key For Doors And Push Button Start
- Remote Keyless Entry w/Integrated Key Transmitter, 2 Door Curb/Courtesy and Illuminated Entry
- Remote Releases -Inc: Power Cargo Access and Power Fuel- Systems Monitor
- Trip Computer- Trunk/Hatch Auto-Latch- Voice Activated Cell Phone

Exterior

- Auto On/Off Projector Beam High Intensity Low/High Beam Daytime Running Auto-Leveling Headlamps w/Washer and Delay-Off
- Body-Colored Front Bumper
- Body-Colored Power Heated Auto Dimming Side Mirrors w/Power Folding and Turn Signal Indicator
- Body-Colored Rear Bumper Chrome Bodyside Moldings- Chrome Door Handles
- Clearcoat Paint- Door Auto-Latch- Fixed Rear Window w/Defroster
- Galvanized Steel/Aluminum/Composite Panels- LED Brakelights- Laminated Glass
- Light Tinted Glass- Lip Spoiler- Perimeter/Approach Lights
- Power Convertible Top w/Lining, Glass Rear Window and Automatic Roll-Over Protection
- Power Open And Close Trunk Rear Cargo Access- Rear Fog Lamps
- Speed Sensitive Rain Detecting Variable Intermittent Wipers- Stainless Steel Grille
- Stainless Steel Side Windows Trim- Tires: P275/35ZR21 Pirelli P-Zero- Wheels w/Locks
- Wheels: 21" x 9.5" 10 Twin-Spoke Painted Alloy

Safety

- 12-Way Power Passenger Seat -inc: Power Recline, Height Adjustment, Fore/Aft Movement, Cushion Tilt, Power 4-Way Lumbar Support and Power Rear Seat Easy Entry
- 14-Way Power Driver Seat -inc: Power Recline, Height Adjustment, Cushion Extension, Fore/Aft Movement, Cushion Tilt, Power 4-Way Lumbar Support and Power Rear Seat Easy Entry
- 3 12V DC Power Outlets- Air Filtration- Analog Appearance
- Bench Front Facing Rear Seat - Bucket Front Seats w/Power 4-Way Driver Lumbar
- Cargo Space Lights- Carpet Floor Trim and Carpet Trunk Lid/Rear Cargo Door Trim
- Compass- Cruise Control w/Steering Wheel Controls
- Day-Night Auto-Dimming Rearview Mirror- Delayed Accessory Power

Factory Installed Packages

ADAPTIVE CRUISE CONTROL

- inc: Uses a single radar mounted in the lower front grille to detect and monitor the speed and distance of vehicles in front, It will follow a target vehicle and adjust its speed accordingly, even down to stationary
- \$2,730

ADDITIONAL CONTRAST STITCHING TO STEERING WHEEL

\$200

CONTRAST STITCHING

\$1,905

CONVENIENCE SPECIFICATION

- inc: Adaptive Cruise Control, Uses a single radar mounted in the lower front grille to detect and monitor the speed and distance of vehicles in front, It will follow a target vehicle and adjust its speed accordingly, even down to stationary, Rear View Camera, Concealed in the aperture of the rear number plate the rear-view camera automatically feeds a picture to the MMI screen when reverse gear is selected, Valet Parking Key, Allows the car to be driven, but w/no access to the trunk or glove box, Cordless Privacy Handset for Telephone
- \$4,335

CORDLESS PRIVACY HANDSET FOR TELEPHONE

\$455

CROSS STITCHING TO SEATS & DOOR PANELS

\$3,610

DARK STAINED BURR WALNUT UPGRADED VENEER

- inc: wood veneer interior trim on the dashboard, center console and overhead panel

FRONT SEAT LUMBAR MASSAGE

\$580

NAIM PREMIUM AUDIO SYSTEM

- inc: fourteen custom-built, next-generation BMR speakers and Dirac Dimensions digital processing, Created by British audio specialists Naim, 6-Disc CD Changer, Discreetly stored within the glovebox
- \$7,300

NECK WARMER

\$1,035

REAR VIEW CAMERA

- inc: Concealed in the aperture of the rear number plate the rear-view camera automatically feeds a picture to the MMI screen when reverse gear is selected
- \$1,215

SEAT VENTILATION & MASSAGE FUNCTION TO FRONT SEATS

\$950

SINGLE-TONE HIDE-TRIMMED HEATED 3-SPOKE STEERING WHEEL

\$480

DAMSON METALLIC

DAMSON, LEATHER BUCKET SEATS

Option Packages Total

\$24,795

- Driver And Passenger Door Bins
- Driver And Passenger Heated-Cushion, Driver And Passenger Heated-Seatback
- Driver And Passenger Visor Vanity Mirrors w/Driver And Passenger Illumination
- Driver Foot Rest- Dual Zone Front Automatic Air Conditioning- Engine Immobilizer
- FOB Controls -inc: Cargo Access, Sunroof/Convertible Roof and Remote Engine Start
- Fade-To-Off Interior Lighting
- Fixed Front Head Restraints and Fixed Rear Head Restraints
- Front Center Armrest w/Storage and Rear Center Armrest w/Pass-Thru
- Front Cupholder- Front Map Lights- Full Carpet Floor Covering- Full Cloth Headliner
- Full Floor Console w/Covered Storage, Mini Overhead Console and 3 12V DC Power Outlets
- Garage Door Transmitter
- Gauges -inc: Speedometer, Odometer, Engine Coolant Temp, Tachometer, Trip Odometer and Trip Computer
- HVAC -inc: Underseat Ducts- Illuminated Locking Glove Box
- Integrated Navigation System w/Voice Activation
- Interior Trim -inc: Deluxe Sound Insulation, Genuine Wood Instrument Panel Insert, Aluminum Door Panel Insert, Aluminum/Genuine Wood Console Insert, Chrome/Aluminum Interior Accents, Leather Upholstered Dashboard and Genuine Wood Overhead Console Insert
- Leather Bucket Seats- Leather Door Trim Insert
- Leather Steering Wheel w/Auto Tilt-Away- Leather/Chrome Gear Shifter Material
- Memory Settings -inc: Driver And Passenger Seats, Door Mirrors, Steering Wheel, Audio, HVAC and Seatbelts
- Outside Temp Gauge- Perimeter Alarm
- Power 1st Row Windows w/Front And Rear 1-Touch Up/Down
- Power Door Locks w/Autolock Feature- Power Rear Windows
- Power Tilt/Telescoping Steering Column
- Proximity Key For Doors And Push Button Start
- Remote Keyless Entry w/Integrated Key Transmitter, 2 Door Curb/Courtesy and Illuminated Entry
- Remote Releases -Inc: Power Cargo Access and Power Fuel- Systems Monitor
- Trip Computer- Trunk/Hatch Auto-Latch- Voice Activated Cell Phone

Mechanical

- 190 Amp Alternator- 23.8 Gal. Fuel Tank- 3.52 Axle Ratio
- 4-Corner Auto-Leveling Suspension
- 4-Wheel Disc Brakes w/4-Wheel ABS, Front And Rear Vented Discs, Brake Assist, Hill Hold Control and Electric Parking Brake
- 85-Amp/Hr Maintenance-Free Battery w/Run Down Protection
- Automatic Full-Time All-Wheel
- Automatic w/Driver Control Height Adjustable Automatic w/Driver Control Ride Control Sport Tuned Adaptive Suspension
- Double Wishbone Front Suspension w/Air Springs
- Dual Stainless Steel Exhaust w/Polished Tailpipe Finisher
- Engine: Twin-Turbocharged 6.0L W12- Front And Rear HD Anti-Roll Bars
- Hydraulic Power-Assist Speed-Sensing Steering
- Multi-Link Rear Suspension w/Air Springs- Premium Shock Absorbers
- Transmission w/Driver Selectable Mode and Quickshift Sequential Shift Control w/Steering Wheel Controls
- Transmission: Close Ratio ZF 8-Speed Automatic w/Quickshift -inc: steering column mounted gearshift paddles



Auto Park Dallas

View this car on our website at autoparkdallas.com/7060622

Website: autoparkdallas.com

Phone: (214) 945-2601

Map: 2061 S Stemmons Fwy, Lewisville, TX 75067

