

2022 FORD F350 SRW DIESEL 4X4 PLATINUM LIKE NEW LOW MILES BIG SCREEN WOW

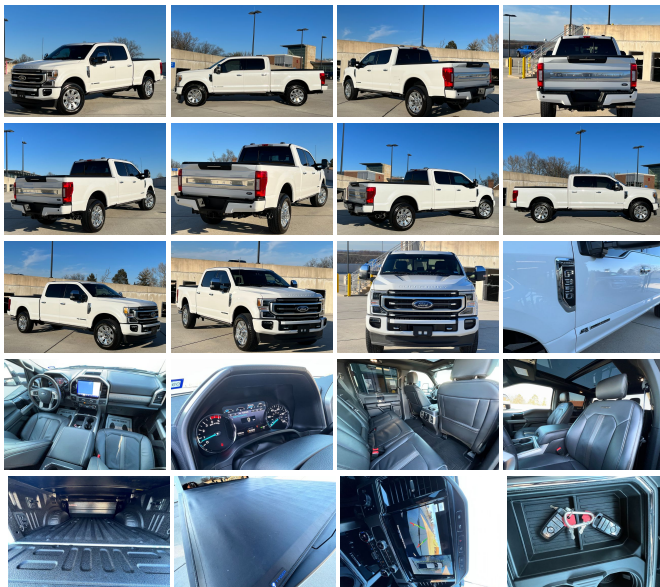
View this car on our website at njtruckking.com/7059764/ebrochure



Our Price **\$94,900**

Specifications:

Year:	2022
VIN:	1FT8W3BT7NEC62215
Make:	FORD F350 SRW DIESEL
Model/Trim:	4X4 PLATINUM LIKE NEW LOW MILES BIG SCREEN WOW
Condition:	Pre-Owned
Body:	Pickup Truck
Exterior:	White
Engine:	ENGINE: 6.7L 4V OHV POWER STROKE V8 TURBO DIESEL B20
Interior:	Black Leather
Mileage:	11,769
Drivetrain:	4 Wheel Drive



2022 FORD F350 4X4 CREW SRW
SHORT BED
~PLATINUM~
6.7L POWERSTROKE TURBO DIESEL
AUTOMATIC TRANSMISSION
(ONLY 11,769 ORIGINAL / ACTUAL MILES)
LIKE NEW
SHOWROOM CONDITION
BIG SCREEN!
TYGER TONNEAU COVER
LOW PRO WEATHERGUARD TOOLBOX
SPRAY IN BED LINER
TINT
LOADED UP WITH OPTIONS
IMPOSSIBLE TO FIND RIGHT NOW!
DONT MISS IT!

BUY IT NOW
\$94,900
CALL / TEXT ROB 856-381-6621 WITH ANY QUESTIONS

Our Location :



2022 FORD F350 SRW DIESEL 4X4 PLATINUM LIKE NEW LOW MILES BIG SCREEN WOW
King of Cars and Trucks - 856-693-3181 - View this car on our website at njtruckking.com/7059764/ebrochure

Installed Options

Interior

- FOB Controls -inc: Cargo Access and Remote Engine Start
- Flow-Through Console -inc: 110V/400W outlet in rear
- Full Carpet Floor Covering -inc: Carpet Front And Rear Floor Mats
- Gauges -inc: Speedometer, Odometer, Oil Pressure, Engine Coolant Temp, Tachometer, Inclinator, Transmission Fluid Temp, Engine Hour Meter, Trip Odometer and Trip Computer
- Interior Trim -inc: Metal-Look Instrument Panel Insert, Genuine Wood/Chrome Door Panel Insert and Chrome/Metal-Look Interior Accents
- Memory Settings -inc: Door Mirrors, Steering Wheel and Pedals
- Power 1st Row Windows w/Driver And Passenger 1-Touch Up/Down
- Power Door Locks w/Autolock Feature- Power Rear Windows
- Proximity Key For Doors And Push Button Start
- Remote Keyless Entry w/Integrated Key Transmitter, Illuminated Entry and Panic Button
- Seats w/Leatherette Back Material- Smart Device Remote Engine Start- Trip Computer
- Unique Platinum Leather 40/Console/40 Seats -inc: multi-contour, heated/ventilated, 10-way power driver and 8-way power front passenger seats (includes power lumbar), memory, 4-way adjustable driver and passenger headrests
- 2 Seatback Storage Pockets- 8-Way Driver Seat- Air Filtration
- Cruise Control w/Steering Wheel Controls- Day-Night Auto-Dimming Rearview Mirror
- Delayed Accessory Power- Digital/Analog Appearance
- Distance Pacing w/Traffic Stop-Go
- Driver And Passenger Visor Vanity Mirrors w/Driver And Passenger Illumination
- Fade-To-Off Interior Lighting- FordPass Connect 4G Mobile Hotspot Internet Access
- Front And Rear Map Lights- Front Cupholder- Front Facing Fold-Up Cushion Rear Seat
- Full Cloth Headliner- Full Overhead Console w/Storage- Garage Door Transmitter
- HVAC -inc: Underseat Ducts- Heated Leather Steering Wheel
- Illuminated Locking Glove Box
- Instrument Panel Covered Bin, Dashboard Storage, Driver / Passenger And Rear Door Bins
- Keypad- Leather Door Trim Insert- Manual Adjustable Rear Head Restraints
- Outside Temp Gauge- Passenger Seat- Bedmaster Alarm- Bedlock- Cargo Bay Lights

Option Packages

Factory Installed Packages

ENGINE: 6.7L 4V OHV POWER STROKE V8 TURBO DIESEL B20
-inc: manual push-button engine-exhaust braking \$10,495
and intelligent oil-life monitor, 240 Amp Alternator (67D), 34 Gallon Fuel Tank, GVWR: 11,500 lb
Payload Package, 3.31 Axle Ratio, Dual 78-AH 750 CCA Batteries

Option Packages Total \$10,495

- Outside Temp Gauge- Passenger Seat- Perimeter Alarm- Pickup Cargo Box Lights
- Power Adjustable Pedals- Power Tilt/Telescoping Steering Column- Rear Cupholder
- SYNC 4 Connected Navigation Integrated Navigation System w/Voice Activation
- Securilock Anti-Theft Ignition (pats) Engine Immobilizer- Systems Monitor
- Urethane Gear Shifter Material
- Voice Activated Dual Zone Front Automatic Air Conditioning w/Steering Wheel Controls

Exterior

- Autolamp Auto On/Off Aero-Composite Led Low/High Beam Auto High-Beam Daytime Running Lights Preference Setting Headlamps w/Delay-Off
- Power Running Boards- Tailgate/Rear Door Lock Included w/Power Door Locks
- Tires: LT275/65R20E OWL A/T (4) -inc: Spare may not be the same as road tire
- Wheels: 20" Polished Aluminum- Aluminum Grille- Aluminum Panels
- Black Side Windows Trim and Black Front Windshield Trim
- Body-Colored Front Bumper w/Body-Colored Rub Strip/Fascia Accent and 2 Tow Hooks
- Body-Colored Rear Step Bumper- Cargo Lamp w/High Mount Stop Light
- Chrome Door Handles
- Chrome Power Heated Side Mirrors w/Convex Spotter, Power Folding and Turn Signal Indicator
- Clearcoat Paint- Deep Tinted Glass- Front Fog Lamps- Headlights-Automatic Highbeams
- LED Brakelights- Perimeter/Approach Lights- Power Extendable Trailer Style Mirrors
- Power Rear Window w/Defroster- Rain Detecting Variable Intermittent Wipers
- Regular Box Style- Retractable Rear Step- Spare Tire Stored Underbody w/Crankdown
- Steel Spare Wheel- Tailgate Rear Cargo Access

Safety

- FOB Controls -inc: Cargo Access and Remote Engine Start
- Flow-Through Console -inc: 110V/400W outlet in rear
- Full Carpet Floor Covering -inc: Carpet Front And Rear Floor Mats
- Gauges -inc: Speedometer, Odometer, Oil Pressure, Engine Coolant Temp, Tachometer, Inclinator, Transmission Fluid Temp, Engine Hour Meter, Trip Odometer and Trip Computer
- Interior Trim -inc: Metal-Look Instrument Panel Insert, Genuine Wood/Chrome Door Panel Insert and Chrome/Metal-Look Interior Accents
- Memory Settings -inc: Door Mirrors, Steering Wheel and Pedals
- Power 1st Row Windows w/Driver And Passenger 1-Touch Up/Down
- Power Door Locks w/Autolock Feature- Power Rear Windows
- Proximity Key For Doors And Push Button Start
- Remote Keyless Entry w/Integrated Key Transmitter, Illuminated Entry and Panic Button
- Seats w/Leatherette Back Material- Smart Device Remote Engine Start- Trip Computer
- Unique Platinum Leather 40/Console/40 Seats -inc: multi-contour, heated/ventilated, 10-way power driver and 8-way power front passenger seats (includes power lumbar), memory, 4-way adjustable driver and passenger headrests
- 2 Seatback Storage Pockets- 8-Way Driver Seat- Air Filtration
- Cruise Control w/Steering Wheel Controls- Day-Night Auto-Dimming Rearview Mirror
- Delayed Accessory Power- Digital/Analog Appearance
- Distance Pacing w/Traffic Stop-Go
- Driver And Passenger Visor Vanity Mirrors w/Driver And Passenger Illumination
- Fade-To-Off Interior Lighting- FordPass Connect 4G Mobile Hotspot Internet Access
- Front And Rear Map Lights- Front Cupholder- Front Facing Fold-Up Cushion Rear Seat
- Full Cloth Headliner- Full Overhead Console w/Storage- Garage Door Transmitter
- HVAC -inc: Underseat Ducts- Heated Leather Steering Wheel
- Illuminated Locking Glove Box
- Instrument Panel Covered Bin, Dashboard Storage, Driver / Passenger And Rear Door Bins
- Keypad- Leather Door Trim Insert- Manual Adjustable Rear Head Restraints
- Outside Temp Gauge- Passenger Seat- Perimeter Alarm- Pickup Cargo Box Lights
- Power Adjustable Pedals- Power Tilt/Telescoping Steering Column- Rear Cupholder
- SYNC 4 Connected Navigation Integrated Navigation System w/Voice Activation
- Securilock Anti-Theft Ignition (pats) Engine Immobilizer- Systems Monitor
- Urethane Gear Shifter Material
- Voice Activated Dual Zone Front Automatic Air Conditioning w/Steering Wheel Controls

Mechanical

- Class V Towing Equipment -inc: Hitch, Brake Controller and Trailer Sway Control
- Engine: 6.2L 2-Valve SOHC EFI NA V8 Flex-Fuel
- Transmission: TorqShift 10-Speed Automatic -inc: SelectShift and selectable drive modes: normal, tow/haul, eco, deep sand/snow and slippery
- 3.73 Axle Ratio- 34 Gal. Fuel Tank
- 4-Wheel Disc Brakes w/4-Wheel ABS, Front And Rear Vented Discs, Brake Assist and Hill Hold Control
- 4460# Maximum Payload- 50-State Emissions System
- 78-Amp/Hr 750CCA Maintenance-Free Battery w/Run Down Protection

- Auto Locking Hubs- Electronic Transfer Case- Firm Suspension- Front Anti-Roll Bar
- Front Suspension w/Coil Springs- GVWR: 11,300 lb Payload Package
- HD 200 Amp Alternator- HD Shock Absorbers
- Hydraulic Power-Assist Speed-Sensing Steering- Leaf Rear Suspension w/Leaf Springs
- Part-Time Four-Wheel Drive- Single Stainless Steel Exhaust w/Chrome Tailpipe Finisher
- Trailer Wiring Harness- Transmission w/Oil Cooler

King of Cars and Trucks

njtruckking.com

856-693-3181

1229 Broadway

Westville, New Jersey 08093

© 2024 AutoRevo - All rights reserved. - Powered by [AutoRevo](#)