

2013 Chevrolet Silverado 1500 LT

View this car on our website at paniaguaautos.com/7059462/ebrochure

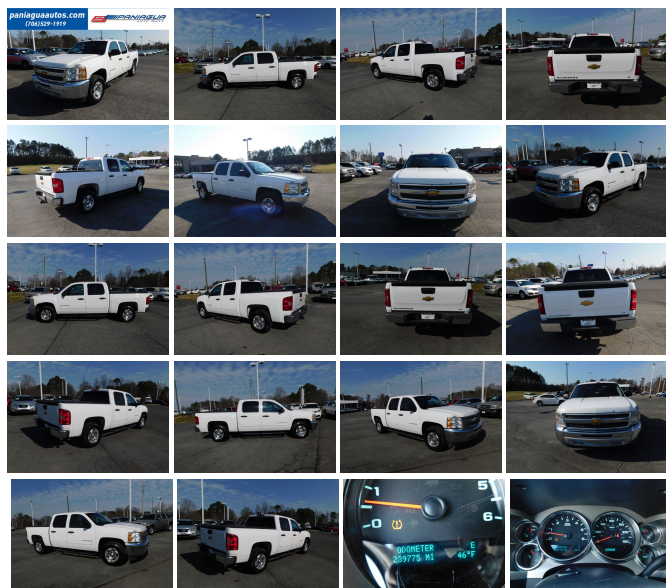


Our Price **\$8,900**

Specifications:

Year:	2013
VIN:	3GCPCSE06DG351717
Make:	Chevrolet
Stock:	7833
Model/Trim:	Silverado 1500 LT
Condition:	Pre-Owned
Body:	Pickup Truck
Exterior:	White
Engine:	ENGINE, VORTEC 5.3L VARIABLE VALVE TIMING V8 SFI FLEXFUEL WITH ACTIVE FUEL MANAGEMENT
Interior:	Black Cloth
Transmission:	AUTOMATIC
Mileage:	239,775
Drivetrain:	Rear Wheel Drive
Economy:	City 15 / Highway 21

2013 CHEVROLET SILVERADO 1500 LT 5.3L V8 AUTOMATIC CLOTH INTERIOR THIS VEHICLE HAS A 12 MONTH WARRANTY ON TRANSMISSION STOP BY TODAY AND TAKE IT FOR A TEST DRIVE



2013 Chevrolet Silverado 1500 LT

Paniagua Auto Mall - 706-529-1919& 423-472-4045 - View this car on our website at paniaguaautos.com/7059462/ebrochure

Our Location :



2013 Chevrolet Silverado 1500 LT
Paniagua Auto Mall - 706-529-1919& 423-472-4045 - View this car on our website at paniaguaautos.com/7059462/ebrochure

Installed Options

Interior

- Air conditioning, single-zone manual front climate control
- Door locks, power includes Remote Keyless Entry
- Floor covering, color-keyed carpeting with rubberized vinyl floor mats (Extended and Crew Cab models also include rear floor mats) (May be substituted with (BG9) Black rubberized vinyl floor covering.)
- Power outlets, 2 auxiliary instrument panel-mounted with covers, 12-volt
- Remote vehicle starter prep package includes Remote Keyless Entry with 2 transmitters, panic button and content theft alarm (To enable remote start capability, new key fobs and vehicle reprogramming are required. Please see dealer for details. Remote Keyless Entry does not lock/unlock tailgate.)
- Seat trim, Premium Cloth
- Seats, front 40/20/40 split-bench, 3-passenger, driver and front passenger manual reclining center fold-down armrest with storage, lockable storage compartment in seat cushion (includes auxiliary power outlet), adjustable outboard head restraints and storage pockets on Extended and Crew Cab models
- Assist handle, front passenger (Also includes rear assist handles in the headliner on Extended and Crew Cab Models.)
- Coat hooks, rear driver and passenger side
- Cruise control, electronic with set and resume speed, located on steering wheel
- Cup holders, front (Also includes rear cupholders on Extended and Crew Cab models.)
- Driver Information Center with odometer, trip odometer and message center (monitors numerous systems depending on vehicle equipment level including low fuel, turn signal "on", transmission temperature and oil change notification) (Driver Information Center controls are operated through the trip odometer button unless (UK3) steering wheel mounted audio controls is ordered. On 1LT, 1SF and 1LZ, includes 8-point compass and outside temperature.)
- Instrumentation, analog with speedometer, odometer, fuel level, engine temperature, and tachometer (Includes voltmeter and oil pressure indicators.)
- Lighting, interior with dome and reading lights, illuminated entry feature and backlit instrument panel switches
- Mirror, inside rearview manual day/night
- Seat adjuster, manual lumbar control on the driver-side

Option Packages

Factory Installed Packages

ENGINE, VORTEC 5.3L VARIABLE VALVE TIMING V8 SFI
FLEXFUEL WITH ACTIVE FUEL MANAGEMENT
capable of running on unleaded or up to 85% ethanol (with gas - 315 hp [234.8 kW] @ 5200 rpm, 335 lb-ft of torque [452.2 N-m] @ 4000 rpm), iron block

Option Packages Total \$825

- Seat, rear 60/40 folding bench (folds up), 3-passenger, folding (includes child seat top tether anchor) (Requires Extended or Crew Cab Models.)
- Steering column, Tilt-Wheel, adjustable with brake/transmission shift interlock
- Steering wheel, leather-wrapped with theft-deterrent locking feature
- Visors, driver and front passenger, sliding with clip and illuminated vanity mirror on driver and passenger-side, Opal Gray-colored
- Warning tones headlamp on, key-in-ignition, driver and passenger buckle up reminder and turn signal on
- Windows, power with driver Express-Down

Exterior

- Headlamps, dual halogen composite with automatic exterior lamp control and flash-to-pass feature
- Mirrors, outside heated power-adjustable, Black, manual-folding (Upgradeable to (DPN) outside vertical camper mirrors.)
- Tires, P245/70R17 all-season, blackwall includes a blackwall spare tire (Requires 2WD models. Not available with (Z71) Off-Road Suspension Package or (WEA) Z71 Enhanced Package.)
- Wheels, 4 - 17" x 7.5" (43.2 cm x 19.1 cm) 6-lug chrome-styled steel includes chrome center caps (spare wheel will not cosmetically match the other 4 wheels) (Upgradeable to (P46) 4 - 17" x 7.5" (43.2 cm x 19.1 cm) 6-lug aluminum wheels, (N87) 4 - 18" x 8" (45.7 cm x 20.3 cm) aluminum wheels or (S80) 4 - 20" x 8.5" (50.8 cm x 21.6 cm) chrome clad aluminum wheels. Not available with (Z71) Off-Road Suspension Package.)
- Air dam, Black
- Bumper, front chrome (Includes chrome bumper bar and end caps with painted silver lower section.)
- Bumper, rear chrome, step-style with pad- Door handles, Black
- Glass, Solar-Ray deep-tinted (all windows except light-tinted glass on windshield and driver- and front passenger-side glass) (With Regular Cab models, includes rear window. With Extended Cab models, includes rear and rear quarter windows. With Crew Cab models or (C49) rear-window defogger, includes light-tinted rear window.)
- Grille, chrome surround- Lamps, dual cargo area lamps
- Moldings, bodyside, body-colored (Moldings are deleted if any SEO paint is ordered.)
- Pickup box, Fleetside
- Spare tire lock keyed cylinder lock that utilizes same key as ignition and door
- Tire carrier, outside spare, winch-type mounted under frame at rear
- Wheel, 17" (43.2 cm) steel spare (spare wheel will not cosmetically match the other 4 wheels)
- Wipers, front intermittent wet-arm with pulse washers

Safety

- Air conditioning, single-zone manual front climate control
- Door locks, power includes Remote Keyless Entry
- Floor covering, color-keyed carpeting with rubberized vinyl floor mats (Extended and Crew Cab models also include rear floor mats) (May be substituted with (BG9) Black rubberized vinyl floor covering.)
- Power outlets, 2 auxiliary instrument panel-mounted with covers, 12-volt
- Remote vehicle starter prep package includes Remote Keyless Entry with 2 transmitters, panic button and content theft alarm (To enable remote start capability, new key fobs and vehicle reprogramming are required. Please see dealer for details. Remote Keyless Entry does not lock/unlock tailgate.)
- Seat trim, Premium Cloth
- Seats, front 40/20/40 split-bench, 3-passenger, driver and front passenger manual reclining center fold-down armrest with storage, lockable storage compartment in seat cushion (includes auxiliary power outlet), adjustable outboard head restraints and storage pockets on Extended and Crew Cab models
- Assist handle, front passenger (Also includes rear assist handles in the headliner on Extended and Crew Cab Models.)
- Coat hooks, rear driver and passenger side
- Cruise control, electronic with set and resume speed, located on steering wheel
- Cup holders, front (Also includes rear cupholders on Extended and Crew Cab models.)
- Driver Information Center with odometer, trip odometer and message center (monitors numerous systems depending on vehicle equipment level including low fuel, turn signal "on", transmission temperature and oil change notification) (Driver Information Center controls are operated through the trip odometer button unless (UK3) steering wheel mounted audio controls is ordered. On 1LT, 1SF and 1LZ, includes 8-point compass and outside temperature.)
- Instrumentation, analog with speedometer, odometer, fuel level, engine temperature, and tachometer (Includes voltmeter and oil pressure indicators.)
- Lighting, interior with dome and reading lights, illuminated entry feature and backlit instrument panel switches
- Mirror, inside rearview manual day/night
- Seat adjuster, manual lumbar control on the driver-side
- Seat, rear 60/40 folding bench (folds up), 3-passenger, folding (includes child seat top tether anchor) (Requires Extended or Crew Cab Models.)
- Steering column, Tilt-Wheel, adjustable with brake/transmission shift interlock
- Steering wheel, leather-wrapped with theft-deterrent locking feature
- Visors, driver and front passenger, sliding with clip and illuminated vanity mirror on driver

and passenger-side, Opal Gray-colored

- Warning tones headlamp on, key-in-ignition, driver and passenger buckle up reminder and turn signal on
- Windows, power with driver Express-Down

Mechanical

- Brakes, 4-wheel antilock, front disc/rear drum
 - Engine, Vortec 4.8L Variable Valve Timing V8 SFI FlexFuel capable of running on unleaded or up to 85% ethanol (302 hp [225.2 kW] @ 5600 rpm, 305 lb-ft torque [411.8 N-m] @ 4600 rpm), iron block (Standard on all models except C*10953 Models. Not available on C*10953 models.)
 - Transmission, 4-speed automatic, electronically controlled with overdrive and tow/haul mode (On Crew Cab models, requires (L20) Vortec 4.8L V8 SFI Flex-Fuel engine. Not available on C*10953 models.)
 - Alternator, 145 amps
 - Battery, heavy-duty 600 cold-cranking amps, maintenance-free with rundown protection and retained accessory power
 - Exhaust, aluminized stainless-steel muffler and tailpipe
 - Frame, fully-boxed, hydroformed front section
 - GVWR, 6800 lbs. (3084 kg) (Requires CC10753, CC10543 or CK10903 models. Standard on CC10543 models.)
 - Rear axle, 3.23 ratio (Standard and only available on (LU3) 4.3L V6 or (L20) Vortec 4.8L V8 SFI FlexFuel on 2WD models. Refer to Engine/Axle chart for availability.)
 - Rear wheel drive- Steering, power, rack-and-pinion
 - Suspension Package, Handling/Trailer, heavy-duty includes 46 mm piston monotube shocks and 36mm front stabilizer bar (Includes 36mm front stabilizer bar when (NHT) Max Trailer Pack is ordered.)
 - Suspension, front independent, coil over shock
 - Suspension, rear 2-stage multi-leaf springs, semi-elliptic
-

We sale used vehicles as is no warranty. We sale extended warranties ask one of our sales rep. for details.

Paniagua Auto Mall

paniaguaautos.com

706-529-1919& 423-472-4045

1776 E. Walnut Ave

Dalton, Georgia 30721

© 2024 AutoRevo - All rights reserved. - **Powered by AutoRevo**