

# 2021 Chevrolet Silverado 1500 Custom

View this car on our website at [parksdeals.com/7059315/ebrochure](https://parksdeals.com/7059315/ebrochure)



Our Price **\$42,979**

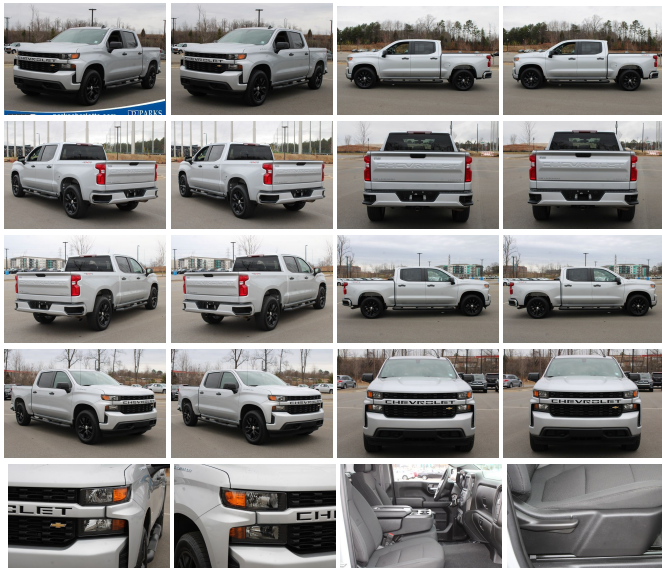
## Specifications:

<b>Year:</b>	2021
<b>VIN:</b>	1GCPYBEK7MZ189132
<b>Make:</b>	Chevrolet
<b>Stock:</b>	210671A
<b>Model/Trim:</b>	Silverado 1500 Custom
<b>Condition:</b>	Pre-Owned
<b>Body:</b>	Pickup Truck
<b>Exterior:</b>	Silver Ice Metallic
<b>Engine:</b>	ENGINE, 2.7L TURBO
<b>Interior:</b>	Black Cloth
<b>Mileage:</b>	21,726
<b>Drivetrain:</b>	4 Wheel Drive
<b>Economy:</b>	City 14 / Highway 20

2021 Chevrolet Silverado 1500 Custom Certified.

8-Speed Automatic, 4WD, Black Cloth, 3.5" Diagonal Monochromatic Display, 4G LTE Wi-Fi Hot Spot Capable, ABS brakes, Bluetooth for Phone, Body Colour Grille, Chevrolet Connected Access Capable, Colour-Keyed Carpeting Floor Covering, Custom Convenience Package, Custom Value Package, Deep-Tinted Glass, Electric Rear-Window Defogger, Electronic Cruise Control, EZ Lift Power Lock & Release Tailgate, Front Frame-Mounted Black Recovery Hooks, Front Rubberized Vinyl Floor Mats, Heavy Duty Suspension, Hitch Guidance, Infotainment Package, LED Cargo Area Lighting, Manual Tilt Wheel Steering Column, OnStar & Chevrolet Connected Services Capable, Power Door Locks, Power Front Windows w/Driver Express Up/Down, Power Front Windows w/Passenger Express Down, Power Rear Windows w/Express Down, Preferred Equipment Group 1CX, Rear 60/40 Folding Bench Seat (Folds Up), Rear Rubberized-Vinyl Floor Mats, Remote Keyless Entry, Remote Vehicle Starter System, SiriusXM, Standard Tailgate, Theft Deterrent System (Unauthorized Entry), Trailing Package. CARFAX One-Owner. Clean CARFAX.

Call 704.288.0662 to check on the availability of this vehicle and schedule a private showing or shop 24 hours a day @ [WWW.PARKSCHARLOTTE.COM](http://WWW.PARKSCHARLOTTE.COM). \*All prices are plus tax, tag, title, and documentation. All vehicles are fully reconditioned by a Master ASE Factory Trained Certified Technician.



## Vehicle History Report : as Of 04/19/2024

**CARFAX**

Snapshot

**2021 CHEVROLET SILVERADO 1500 CUSTOM**



No accidents or damage reported to CARFAX



7 Service history records



2 Previous owners



Types of owners: Personal lease  
Personal



Last owned in Florida



24,761 Last reported odometer reading



**FREE CARFAX Report**

See the full CARFAX Report for additional information

\*carfax Snapshot is a reflection of available information on the date the report was pulled. carfax is constantly being updated with new information and is subject to change at any time.

## Our Location :



2021 Chevrolet Silverado 1500 Custom

Parks Chevrolet, Inc. - 833-825-2763 - View this car on our website at [parksdeals.com/7059315/ebrochure](https://parksdeals.com/7059315/ebrochure)

## Installed Options

### Interior

- Seats, front 40/20/40 split-bench with covered armrest storage - Seat trim, Cloth
- Seat, rear 60/40 folding bench (folds up), 3-passenger (includes child seat top tether anchor)
- Floor mats, rubberized vinyl, front (Deleted when LPO floor liners are ordered.)
- Floor mats, rubberized-vinyl rear (Deleted when LPO floor liners are ordered.)
- Window, power front, passenger express down- Windows, power rear, express down
- Door locks, power- Remote Keyless Entry, with 2 transmitters
- Remote vehicle starter system- Theft-deterrent system, unauthorized entry
- USB ports, 2 (first row) located on instrument panel- Air vents, rear, heating/cooling
- Defogger, rear-window electric- Seat adjuster, driver 4-way manual
- Seat adjuster, passenger 4-way manual- Floor covering, color-keyed carpeting
- Steering wheel, urethane
- Steering column, Tilt-Wheel, manual with wheel locking security feature
- Instrument cluster, 6-gauge cluster featuring speedometer, fuel level, engine temperature, tachometer, voltage and oil pressure
- Driver Information Center, 3.5" diagonal monochromatic display
- Exterior Temperature Display located in radio display
- Compass located in instrument cluster- Rear Seat Reminder
- Window, power front, drivers express up/down

## Option Packages

### Factory Installed Packages

**ENGINE, 2.7L TURBO**  
(310 hp [231 kW] @ 5600 rpm, 348 lb-ft of torque  
[471 Nm] @ 1500 rpm)

- Cruise control, electronic with set and resume speed, steering wheel-mounted
- Power outlet, front auxiliary, 12-volt- Mirror, inside rearview, manual tilt
- Assist handles front A-pillar mounted for driver and passenger, rear B-pillar mounted
- Chevrolet Connected Access capable (Subject to terms. See onstar.com or dealer for details.)

---

## Exterior

- Wheels, 20" x 9" (50.8 cm x 22.9 cm) Bright Silver painted aluminum
- Tires, 275/60R20 all-season, blackwall- Tire, spare 255/80R17SL all-season, blackwall
- Headlamps, halogen reflector with halogen Daytime Running Lamps
- Mirrors, outside heated power-adjustable
- Wheel, 17" x 8" (43.2 cm x 20.3 cm) full-size, steel spare
- Tire carrier lock, keyed cylinder lock that utilizes same key as ignition and door
- Bumper, front (Body-color.)- Bumper, rear (Body-color.)- CornerStep, rear bumper
- Recovery hooks, front, frame-mounted, Black
- Cargo tie downs (12), fixed rated at 500 lbs per corner
- Grille (Body color bars with black mesh inserts.)
- Lamps, cargo area, cab mounted integrated with center high mount stop lamp, with switch in bank on left side of steering wheel
- LED Cargo Area Lighting located in pickup bed, activated with switch on center switch bank or key fob
- Taillamps, LED with signature- Glass, deep-tinted- Door handles, Black
- Tailgate and bed rail protection cap, top - Tailgate, standard
- Tailgate, gate function manual with EZ Lift includes power lock and release

---

## Safety

- Seats, front 40/20/40 split-bench with covered armrest storage - Seat trim, Cloth
- Seat, rear 60/40 folding bench (folds up), 3-passenger (includes child seat top tether anchor)
- Floor mats, rubberized vinyl, front (Deleted when LPO floor liners are ordered.)
- Floor mats, rubberized-vinyl rear (Deleted when LPO floor liners are ordered.)
- Window, power front, passenger express down- Windows, power rear, express down
- Door locks, power- Remote Keyless Entry, with 2 transmitters
- Remote vehicle starter system- Theft-deterrent system, unauthorized entry
- USB ports, 2 (first row) located on instrument panel- Air vents, rear, heating/cooling
- Defogger, rear-window electric- Seat adjuster, driver 4-way manual
- Seat adjuster, passenger 4-way manual- Floor covering, color-keyed carpeting
- Steering wheel, urethane
- Steering column, Tilt-Wheel, manual with wheel locking security feature
- Instrument cluster, 6-gauge cluster featuring speedometer, fuel level, engine temperature, tachometer, voltage and oil pressure
- Driver Information Center, 3.5" diagonal monochromatic display
- Exterior Temperature Display located in radio display
- Compass located in instrument cluster- Rear Seat Reminder
- Window, power front, drivers express up/down
- Cruise control, electronic with set and resume speed, steering wheel-mounted
- Power outlet, front auxiliary, 12-volt- Mirror, inside rearview, manual tilt
- Assist handles front A-pillar mounted for driver and passenger, rear B-pillar mounted
- Chevrolet Connected Access capable (Subject to terms. See onstar.com or dealer for details.)

---

## Mechanical

- Engine, 2.7L Turbo (310 hp [231 kW] @ 5600 rpm, 348 lb-ft of torque [471 Nm] @ 1500 rpm) (As of 3-22-21 is the standard and only available engine. Requires (C4P) semi-automatic air conditioning, (K14) 120-volt power outlet and (KC9) 120-volt bed mounted power outlet. Includes (MQE) 8-speed automatic transmission and (KW5) 220-amp alternator.)
- Transmission, 8-speed automatic, electronically controlled with overdrive and tow/haul mode. Includes Cruise Grade Braking and Powertrain Grade Braking (Included and only available with (L3B) 2.7L Turbo engine.)
- Rear axle, 3.42 ratio- Durabed, pickup bed
- GVWR, 7000 lbs. (3175 kg) (Requires Crew Cab or Double Cab 4WD model and (LV3) 4.3L EcoTec3 V6 engine or (L3B) 2.7L Turbo engine.)
- Automatic Stop/Start (Included and only available with (L3B) 2.7L Turbo engine.)
- Transfer case, single speed electronic Autotrac with push button control (4WD models only)
- Four wheel drive
- Battery, heavy-duty 730 cold-cranking amps/80 Amp-hr, maintenance-free with rundown protection and retained accessory power (Included and only available with (L3B) 2.7L Turbo engine.)
- Alternator, 220 amps (Included and only available with (L3B) 2.7L Turbo engine or (NHT) Max Trailering Package.)
- Frame, fully-boxed, hydroformed front section
- Steering, Electric Power Steering (EPS) assist, rack-and-pinion

- Brakes, 4-wheel antilock, 4-wheel disc with DURALIFE rotors - Brake lining wear indicator
  - Capless Fuel Fill
- 

Parks Chevrolet, Inc.

[parksdeals.com](https://parksdeals.com)

833-825-2763

615 NC-66 South

Kernersville, NC 27284

© 2024 AutoRevo - All rights reserved. - Powered by [AutoRevo](#)