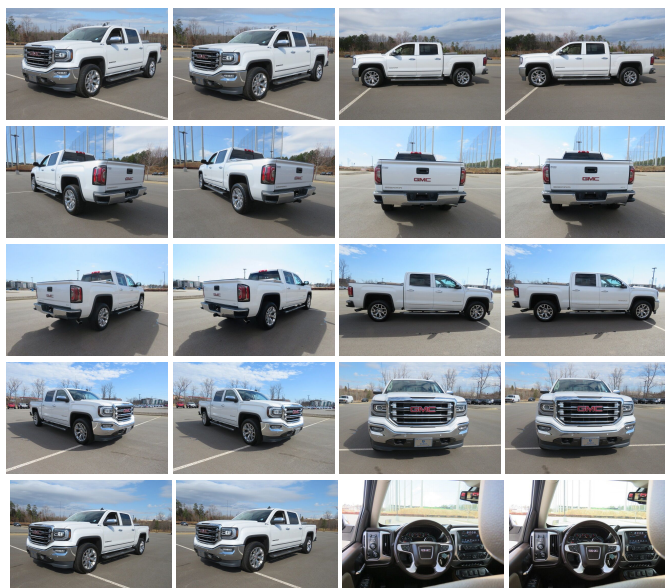


2017 GMC Sierra 1500 SLT

View this car on our website at parksdeals.com/7058412/ebrochure



Our Price **\$44,937**

Specifications:

Year:	2017
VIN:	3GTU2NEJXHG352410
Make:	GMC
Stock:	9C3659A
Model/Trim:	Sierra 1500 SLT
Condition:	Pre-Owned
Body:	Pickup Truck
Exterior:	White Frost Tricoat
Engine:	ENGINE, 6.2L ECOTEC3 V8 WITH ACTIVE FUEL MANAGEMENT, DIRECT INJECTION
Interior:	Cocoa/Dune Leather
Mileage:	65,989
Drivetrain:	4 Wheel Drive
Economy:	City 15 / Highway 20

2017 GMC Sierra 1500 SLT Certified.

8-Speed Automatic with Overdrive, 4WD, Cocoa/Dune Leather, 10-Way Power Driver's Seat Adjuster, 110-Volt AC Power Outlet, 150 Amp Alternator, 1st & 2nd Row Color-Keyed Carpeted Floor Mats, 20" x 9" Chrome Clad Aluminum Wheels, 2-Speed Active Electronic AutoTrac Transfer Case, 4.2" Diagonal Color Display Driver Info Center, 6" Rectangular Chromed Tubular Assist Steps, 6-Speaker Audio System, Auto-Dimming Inside Rear-View Mirror, Auxiliary External Transmission Oil Cooler, Chrome Bodyside Moldings, Chrome Door Handles, Chrome Mirror Caps, Color-Keyed Carpeting, Deep-Tinted Glass, Delay-off headlights, Driver & Front Passenger Illuminated Vanity Mirrors, Dual-Zone Automatic Climate Control, Electric Rear-Window Defogger, Enhanced Driver Alert Package, EZ Lift & Lower Tailgate, Floor Mounted Console, Forward Collision Alert, Front fog lights, Front Frame-Mounted Black Recovery Hooks, Front Full Feature Power Reclining Bucket Seats, HD Radio, Heated & Ventilated Front Bucket Seats, Heated Driver & Front Passenger Seats, Heated front seats, Heavy-Duty Rear Locking Differential, High-Intensity Discharge Headlights, High-Performance LED Headlamps, Hill Descent Control, Integrated Trailer Brake Controller, IntelliBeam Automatic High Beam On/Off Headlight, Lane Keep Assist, Leather Wrapped Heated Steering Wheel, Leather Wrapped Steering Wheel w/Cruise Controls, LED Cargo Box Lighting, LED Tailamps w/Signature, Low Speed Forward Automatic Braking, Manual Tilt/Telescoping Steering Column, Off-Road Suspension Package, OnStar 3 Month Guidance Plan, OnStar w/4G LTE, Power Adjustable Pedals, Power Folding & Adjustable Heated Outside Mirrors, Power Sliding Rear Window w/Defogger, Power Sunroof, Power Windows w/Driver Express Up & Down, Preferred

Equipment Group 4SA, Radio: AM/FM Stereo w/8" Diagonal Color Touch Nav., Rear 60/40 Folding Bench Seat (Folds Up), Rear Vision Camera, Rear Wheelhouse Liners, Remote Keyless Entry, Remote Locking Tailgate, Remote Vehicle Starter System, Single Slot CD/MP3 Player, SiriusXM Satellite Radio, SLT Crew Cab Premium Plus Package, Spray-On Pickup Box Bed Liner w/GMC Logo, Steering Wheel Audio Controls, Theft Deterrent System (Unauthorized Entry), Thin Profile LED Fog Lamps, Trailering Equipment, Ultrasonic Front & Rear Park Assist, Universal Home Remote, Wireless Charging. Clean CARFAX.

Odometer is 5668 miles below market average!

Call 704.288.0662 to check on the availability of this vehicle and schedule a private showing or shop 24 hours a day @ WWW.PARKSCHARLOTTE.COM. *All prices are plus tax, tag, title, and documentation. All vehicles are fully reconditioned by a Master ASE Factory Trained Certified Technician.

Awards:

* 2017 KBB.com Brand Image Awards

2017 GMC Sierra 1500 SLT

Parks Chevrolet, Inc. - 833-825-2763 - View this car on our website at parksdeals.com/7058412/ebrochure

Vehicle History Report : as Of 04/09/2024

CARFAX

Snapshot

2017 GMC SIERRA 1500 SLT



No accidents or damage reported to CARFAX



16 Service history records



3 Previous owners



Personal vehicle



Last owned in South Carolina



78,827 Last reported odometer reading



FREE CARFAX Report

See the full CARFAX Report for additional information

*carfax Snapshot is a reflection of available information on the date the report was pulled. carfax is constantly being updated with new information and is subject to change at any time.

Our Location :



Installed Options

Interior

- Seats, front 40/20/40 leather-appointed split-bench, 3-passenger with (KA1) heated seat cushions and seat backs. Includes 10-way power driver and front passenger seat adjusters, including driver/front passenger power recline, driver/front passenger power lumbar, 2-position driver memory and adjustable outboard head restraints.
- OnStar 4G LTE and built-in Wi-Fi hotspot connects to the Internet at 4G LTE speeds; includes OnStar Data Trial for 3 months or 3GB (whichever comes first) (Visit www.onstar.com for coverage map, details and system limitations. Services vary by model. OnStar acts as a link to existing emergency service providers. Not all vehicles may transmit all crash data. Available Wi-Fi requires compatible mobile device, active OnStar service and data plan. Data plans provided by AT&T.)
- Seating, heated driver and front passenger Only available on Crew Cab and Double Cab models.
- Floor mats, color-keyed carpeted first and second row (Not available with (GAT) All Terrain Package.)
- Steering wheel, leather-wrapped with audio and cruise controls- Door locks, power
- Remote Keyless Entry (Includes (A91) remote locking tailgate.)
- Cruise control, steering wheel-mounted- Defogger, rear-window electric
- OnStar Guidance Plan for 3 months, including Automatic Crash Response, Stolen Vehicle Assistance, Roadside Assistance, Turn-by-Turn Navigation, Advanced Diagnostics and more (trial excludes Hands-Free Calling) for 6 months, including Automatic Crash Response, Stolen Vehicle Assistance, Roadside Assistance, Turn-by-Turn Navigation, Advanced Diagnostics and more (trial excludes Hands-Free Calling) (Fleet orders receive a 6-month trial. Visit www.onstar.com for coverage map, details and system limitations. Services vary by model. OnStar acts as a link to existing emergency service providers. Not all vehicles may transmit all crash data.) (Retail orders receive a 3-month trial. Visit www.onstar.com for coverage map, details and system limitations. Services vary by model. OnStar acts as a link to existing emergency service providers. Not all vehicles may transmit all crash data.)
- Seat, rear 60/40 folding bench (folds up), 3-passenger (includes child seat top tether anchor)
- Floor covering, color-keyed carpeting
- Steering column, manual Tilt-Wheel and telescoping
- Instrumentation, 6-gauge cluster featuring speedometer, fuel level, engine temperature, tachometer, voltage and oil pressure
- Driver Information Center, 4.2-inch diagonal color display includes driver personalization, warning messages and vehicle information
- Windows, power with driver express up and down and express down on all other windows
- Pedals, power-adjustable- Remote vehicle starter system- Universal Home Remote
- Theft-deterrent system, unauthorized entry
- Air conditioning, dual-zone automatic climate control- Power outlet, 110-volt AC
- Mirror, inside rearview auto-dimming
- Visors, driver and front passenger illuminated vanity mirrors
- Assist handle, front passenger on A-pillar

Exterior

- Wheels, 18" x 8.5" (45.7 cm x 21.6 cm) polished aluminum
- Tires, P265/65R18 all-season, blackwall
- Mirrors, outside chrome cap, heated power-adjustable, power-folding and driver-side auto-dimming with integrated turn signal indicators and puddle lamps (includes driver's side spotter mirror)
- Wheelhouse liners, rear (Requires Crew Cab or Double Cab model.)
- Tire, spare P265/70R17 all-season, blackwall
- Tire carrier lock keyed cylinder lock that utilizes same key as ignition and door
- Bumper, front chrome lower- Bumper, rear chrome with rear bumper corner steps
- CornerStep, rear bumper- Moldings, bodyside, chrome- Grille surround, chrome
- Active aero shutters, front
- Headlamps, high intensity discharge (HID) projector-beam with LED signature
- Fog lamps, thin profile LED- Taillamps, LED with signature
- Lamps, cargo area, cab mounted with switch on center switch bank
- Mirror caps, chrome (Not available with (GAT) All Terrain Package.) - Glass, deep-tinted
- LED Lighting, cargo box with switch on center switch bank
- Tailgate and bed rail protection caps, top
- Remote Locking Tailgate (Included and only available with (AQQ) Remote Keyless Entry.)
- Tailgate, EZ-Lift and Lower- Door handles, chrome

Safety

- Seats, front 40/20/40 leather-appointed split-bench, 3-passenger with (KA1) heated seat cushions and seat backs. Includes 10-way power driver and front passenger seat

Option Packages

Factory Installed Packages

ENGINE, 6.2L ECOTEC3 V8 WITH ACTIVE FUEL MANAGEMENT, DIRECT INJECTION

and Variable Valve Timing, includes aluminum block construction, (420 hp [313 kW] @ 5600 rpm, 460 lb-ft of torque [624 Nm] @ 4100 rpm)

\$2,695

Option Packages Total

\$2,695

adjusters, including driver/front passenger power recline, driver/front passenger power lumbar, 2-position driver memory and adjustable outboard head restraints.

- OnStar 4G LTE and built-in Wi-Fi hotspot connects to the Internet at 4G LTE speeds; includes OnStar Data Trial for 3 months or 3GB (whichever comes first) (Visit www.onstar.com for coverage map, details and system limitations. Services vary by model. OnStar acts as a link to existing emergency service providers. Not all vehicles may transmit all crash data. Available Wi-Fi requires compatible mobile device, active OnStar service and data plan. Data plans provided by AT&T.)
- Seating, heated driver and front passenger Only available on Crew Cab and Double Cab models.
- Floor mats, color-keyed carpeted first and second row (Not available with (GAT) All Terrain Package.)
- Steering wheel, leather-wrapped with audio and cruise controls- Door locks, power
- Remote Keyless Entry (Includes (A91) remote locking tailgate.)
- Cruise control, steering wheel-mounted- Defogger, rear-window electric
- OnStar Guidance Plan for 3 months, including Automatic Crash Response, Stolen Vehicle Assistance, Roadside Assistance, Turn-by-Turn Navigation, Advanced Diagnostics and more (trial excludes Hands-Free Calling) for 6 months, including Automatic Crash Response, Stolen Vehicle Assistance, Roadside Assistance, Turn-by-Turn Navigation, Advanced Diagnostics and more (trial excludes Hands-Free Calling) (Fleet orders receive a 6-month trial. Visit www.onstar.com for coverage map, details and system limitations. Services vary by model. OnStar acts as a link to existing emergency service providers. Not all vehicles may transmit all crash data.) (Retail orders receive a 3-month trial. Visit www.onstar.com for coverage map, details and system limitations. Services vary by model. OnStar acts as a link to existing emergency service providers. Not all vehicles may transmit all crash data.)
- Seat, rear 60/40 folding bench (folds up), 3-passenger (includes child seat top tether anchor)
- Floor covering, color-keyed carpeting
- Steering column, manual Tilt-Wheel and telescoping
- Instrumentation, 6-gauge cluster featuring speedometer, fuel level, engine temperature, tachometer, voltage and oil pressure
- Driver Information Center, 4.2-inch diagonal color display includes driver personalization, warning messages and vehicle information
- Windows, power with driver express up and down and express down on all other windows
- Pedals, power-adjustable- Remote vehicle starter system- Universal Home Remote
- Theft-deterrent system, unauthorized entry
- Air conditioning, dual-zone automatic climate control- Power outlet, 110-volt AC
- Mirror, inside rearview auto-dimming
- Visors, driver and front passenger illuminated vanity mirrors
- Assist handle, front passenger on A-pillar

Mechanical

- Engine, 5.3L EcoTec3 V8, with Active Fuel Management, Direct Injection and Variable Valve Timing, includes aluminum block construction (355 hp [265 kW] @ 5600 rpm, 383 lb-ft of torque [518 Nm] @ 4100 rpm; more than 300 lb-ft of torque from 2000 to 5600 rpm)
- Transmission, 6-speed automatic, electronically controlled with overdrive and tow/haul mode. Includes Cruise Grade Braking and Powertrain Grade Braking
- Recovery hooks, front, frame-mounted, black (Standard on 4WD models.)
- Rear axle, 3.08 ratio (Standard and only available on (L83) 5.3L EcoTec3 V8 engine. Not available with (RD3) 20" bright machined aluminum wheels, (NZM) 20" chrome aluminum wheels or 22" LPO wheels.)
- Pickup box
- GVWR, 7200 lbs. (3266 kg) (Requires Crew Cab or Double Cab 4WD models and (L83) 5.3L EcoTec3 V8 engine or (L86) 6.2L EcoTec3 V8 engine. Included with (PCQ) SLT eAssist Package on TC15543 Crew Cab model.)
- Differential, heavy-duty locking rear
- Transfer case, active, 2-speed electronic Autotrac with rotary controls, includes neutral position for dinghy towing (Included with 4WD models only.)
- Suspension Package- Four wheel drive- Cooling, external engine oil cooler
- Cooling, auxiliary external transmission oil cooler
- Alternator, 150 amps (Not included with (PCQ) SLT eAssist Package.)
- Battery, heavy-duty 720 cold-cranking amps/80 Amp-hr, maintenance-free with rundown protection and retained accessory power
- Frame, fully-boxed, hydroformed front section- Cargo tie downs (4), movable upper
- Steering, Electric Power Steering (EPS) assist, rack-and-pinion
- Brakes, 4-wheel disc with DURALIFE rotors, 4-wheel antilock- Capless Fuel Fill
- Exhaust, aluminized stainless-steel muffler and tailpipe

615 NC-66 South
Kernersville, NC 27284

© 2024 AutoRevo - All rights reserved. - Powered by AutoRevo