

3075 Leon Rd  
Jacksonville , FL 32246

# 2005 Jeep Wrangler Sport

## Nolan Hill

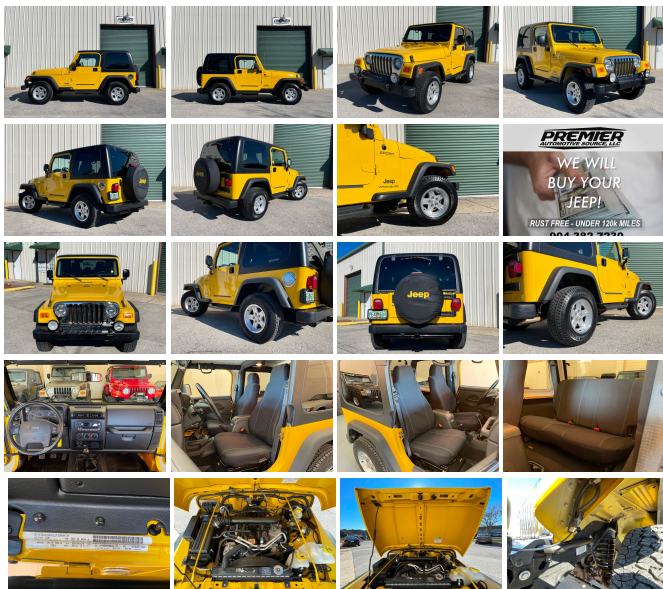
View this car on our website at [premierautomotivesource.com/7058351/ebrochure](http://premierautomotivesource.com/7058351/ebrochure)



### Our Price **\$0**

### Specifications:

**Year:** 2005  
**VIN:** 1J4FA49S65P386323  
**Make:** Jeep  
**Model/Trim:** Wrangler Sport  
**Condition:** Pre-Owned  
**Body:** SUV  
**Exterior:** Solar Yellow  
**Engine:** 4.0L SMPI I6 "POWER TECH" ENGINE  
**Interior:** Dark Slate Gray Cloth  
**Transmission:** 6-SPEED MANUAL TRANSMISSION  
**Mileage:** 44,800  
**Drivetrain:** 4 Wheel Drive  
**Economy:** City 14 / Highway 18



## 2005 JEEP WRANGLER SPORT TJ

- LOW MILES -
- CLEAN SOUTHERN JEEP -
- HARD TOP -
- LEGENDARY 4.0 INLINE 6 ENGINE -
- 6 SPEED MANUAL TRANSMISSION -
- OPTIONAL 3.73 GEARS -
- OPTIONAL DANA 44 REAR AXLE -
- COLD A/C -
- SIDE STEPS -
- TOW PACKAGE -
- TRADE INS WELCOME -
- WE SELL & SHIP WORLD WIDE -

- CLEAN CARFAX HISTORY REPORT -

- CALL OR TEXT NOLAN @ 904-382-7230 -

- LIVE WALK AROUND VIDEO AVAILABLE -

Stock 2005 TJ Jeep Wrangler Sport. Solar Yellow with black cloth. 4.0 inline 6cyl Engine, 6 speed manual transmission, optional Dana 44 rear axle, and 3.73 gears. Hard top, factory Ravine aluminum wheels with 30X9.50X15 A/T tires, factory side steps, and Cold A/C. The legendary 4.0L inline 6cyl runs great. This low mileage, Wrangler is very clean inside and out as well as underneath, It runs, drives, and looks excellent. Sold with 2 keys, WeatherTech mats, and owners manuals.

For financing we recommend LightStream, a division of SunTrust Bank, to offer low-interest financing to people with good credit.

LightStream has an easy online application process, and provides a quick response during business hours. This is a confidential process between you and LightStream. For more information or to apply:

[http://lightstream.com/?](http://lightstream.com/?fact=14755&irad=391622&irmp=3040226)

[fact=14755&irad=391622&irmp=3040226](http://lightstream.com/?fact=14755&irad=391622&irmp=3040226)

(Please note, we may receive a referral fee from LightStream through this link.)

Call or text Nolan 904-382-7230. We can also set up a time to do a FaceTime/video call while we walk-around the vehicle and you can see the vehicle and ask questions. ALL INVENTORY IS STORED INDOORS AND SHOWN BY APPOINTMENT. Trades accepted. Extended warranties available. All applicable sales tax, title, registration and a \$299 document fees apply.

**Our Location :**



2005 Jeep Wrangler Sport

Premier Automotive Source LLC - - View this car on our website at [premierautomotivesource.com/7058351/ebrochure](http://premierautomotivesource.com/7058351/ebrochure)

## Installed Options

### Interior

- AM/FM stereo w/CD player-inc: changer control
- Cloth reclining high-back front bucket seats - (7) speakers w/subwoofer- Air conditioning
- Aux 12-volt pwr outlet- Cargo tie down loops- Courtesy/underhood lamps
- Easy access tip/slide driver seat- Fixed long mast antenna- Folding rear seat
- Front/rear seat/wheelhouse/cargo area carpeting- Full length floor console
- Glove box w/lock- Sport bar w/full padding- Tilt steering column
- Tip & slide passenger seat

### Exterior

- Folding soft top- Variable intermittent windshield wipers- Deep tint sunscreen glass
- Fender flares- Fog lamps- Fold away exterior mirrors- Front door light tinted windows

### Safety

- AM/FM stereo w/CD player-inc: changer control
- Cloth reclining high-back front bucket seats - (7) speakers w/subwoofer- Air conditioning
- Aux 12-volt pwr outlet- Cargo tie down loops- Courtesy/underhood lamps
- Easy access tip/slide driver seat- Fixed long mast antenna- Folding rear seat
- Front/rear seat/wheelhouse/cargo area carpeting- Full length floor console
- Glove box w/lock- Sport bar w/full padding- Tilt steering column
- Tip & slide passenger seat

### Mechanical

- Full size spare tire w/outside carrier- Matching spare wheel
- P225/75R15 all-terrain OWL "Wrangler" tires- Pwr front disc/rear drum brakes
- (4) 15" x 7" full-face steel wheels - 117-amp alternator- 19 gallon fuel tank
- 3.07 axle ratio- 4.0L SMPI I6 "Power Tech" engine - 4450# GVWR
- 600-CCA maintenance free battery- Command-Trac part-time 4WD system
- Dana 30/186MM front axle- Dana M35/194MM rear axle- Front/rear stabilizer bars
- HD 6-speed manual transmission- Low pressure gas-charged shock absorbers
- Next generation engine controller- Pwr steering- Skid plates-inc: transfer case, fuel tank
- Tethered gas cap- Tow hooks-inc: (2) front, (1) rear

## Option Packages

### Factory Installed Packages

4.0L SMPI I6 "POWER TECH" ENGINE

6-SPEED MANUAL TRANSMISSION

ADD-A-TRUNK LOCKABLE STORAGE

\$125

BODY-SIDE STEPS

\$150

DANA 44/226MM HD REAR AXLE

-inc: 3.73 axle ratio

\$310

LEATHER WRAPPED STEERING WHEEL

-inc: speed control

\$300

3.73 AXLE RATIO

HARD TOP

-inc: rear window defroster, rear window wiper  
w/washer

\$795

Option Packages Total

\$1,680

DEALER POLICIES: Please review all photos carefully and ask questions prior to making an offer if there is anything you are not sure about. We welcome pre-sale inspections. Any descriptions we make of vehicles shall not be construed as any type of warranty. Our pictures are as thorough and precise as we can make them. Please be advised that this is not a brand new vehicle. It is a pre-owned vehicle and has previously been driven, so therefore with respect to the miles there will most likely be average wear and tear, such as minor scratches, minor dings, or small rock chips. We do our best to disclose any substantial blemishes in our photos and descriptions. If our vehicles include manuals, service records or extra sets of keys, it will be shown in the pictures and noted in the description. The advertised mileage is a round number and may vary slightly from the exact mileage due to demo and test drives. Once a vehicle leaves our premises, no refunds, credits, or adjustments, will be issued. All Vehicles are conveyed AS-IS. Dealer neither makes nor implies any warranty on this or any vehicle. Any dispute that may arise shall take place under the laws of the state of Florida, in the state of Florida and all sales are subject to binding Arbitration under the rules of the American Arbitration Association. All applicable sales tax, tag and title fees apply. When we receive a vehicle into our inventory, sometimes the title is being held by a bank or lender as collateral for the previous loan or payoff. Occasionally there is a delay in receiving the title from these lending institutions after payoff of the loan for up to two weeks. While we usually have the titles in our possession, there are instances where we may be waiting for the title to arrive. We guarantee clean titles on our vehicles unless otherwise noted. In some cases we may hold titles until cashiers checks or other funds are cleared or unless other arrangements were agreed upon. Titles will be sent via Fedex for proper tracking. Thank you for your patience and understanding.

Premier Automotive Source LLC

[premierautomotivesource.com](http://premierautomotivesource.com)

3075 Leon Rd

Jacksonville, FL 32246

© 2024 AutoRevo - All rights reserved. - Powered by AutoRevo