

parksdeals.com
833-825-2763
615 NC-66 South
Kernersville, NC
27284

Parks Chevrolet,
Inc.

2020 Chevrolet Silverado 2500HD Custom

View this car on our website at parksdeals.com/7057958/ebrochure



Our Price **\$54,621**

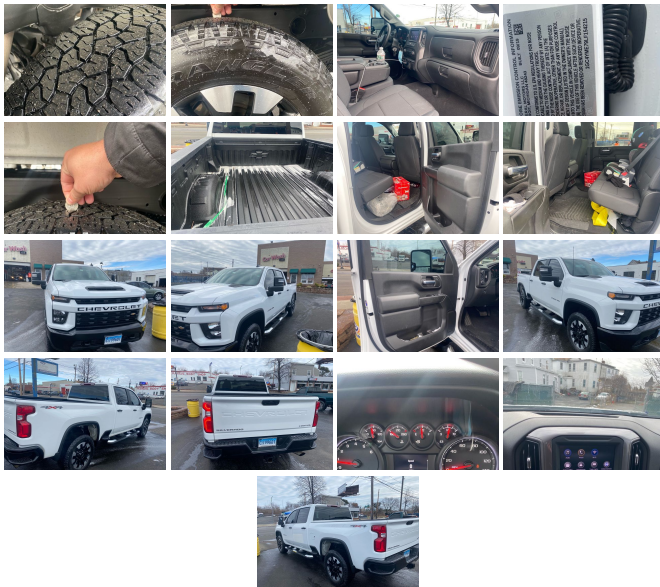
Specifications:

Year:	2020
VIN:	1GC4YME79LF154215
Make:	Chevrolet
Stock:	FK7341XA
Model/Trim:	Silverado 2500HD Custom
Condition:	Pre-Owned
Body:	Pickup Truck
Exterior:	Summit White
Engine:	ENGINE, 6.6L V8
Interior:	Black Cloth
Mileage:	25,987
Drivetrain:	4 Wheel Drive

Parks Chevrolet in Kernersville, NC ! We offer low payment - easy financing on everything ! We sell in volume and that saves you money!!

2020 Summit White Chevrolet Silverado 2500HD CARFAX One-Owner. Clean CARFAX. 6-Speed Automatic, 4WD, Black Cloth, 2-Speed Electronic Shift Transfer Case, 3.5" Diagonal Monochromatic Display DIC, 4G LTE Wi-Fi Hotspot Capable, 4-Wheel Disc Brakes, ABS brakes, Auto-Dimming Inside Rear-View Mirror, Black Mirror Caps, Bluetooth?? For Phone, Body Color Front Grille, Chevrolet Connected Access Capable, Color-Keyed Carpeting Floor Covering, Custom Convenience Package, Custom Value Package, Deep-Tinted Glass, Electric Rear-Window Defogger, Electronic Cruise Control w/Set & Resume Speed, Exterior Parking Camera Rear, Front Rubberized Vinyl Floor Mats, Heated & Auto-Dimming Vertical Trailing Mirrors, Heated Vertical Trailing Mirrors, Infotainment Package, Integrated Trailer Brake Controller, LED Cargo Area Lighting, Locking Tailgate, Manual Tailgate Function w/EZ Lift, Manual Tailgate Function w/No EZ Lift, Manual Tilt-Wheel Steering Column, OnStar & Chevrolet Connected Services Capable, Panic alarm, Power Door Locks, Power Front Windows w/Driver Express Up/Down, Power Front Windows w/Passenger Express Down, Power Rear Windows w/Express Down, Preferred Equipment Group 1CX, Rear 60/40 Folding Bench Seat (Folds Up), Rear Rubberized Vinyl Floor Mats, Remote Keyless Entry, Remote Vehicle Starter System, SiriusXM Radio, Snow Plow Prep/Camper Package, Suspension Package, Wheels: 20" Machined Alum w/Black Painted Accents.

\$1000 - Dealer Trade-in Allowance (Must own and trade a 2014 or newer passenger vehicle to qualify for the Dealer Trade-in Allowance), Allowance is \$1000 above True Car Cash Offer. This offer is based on the current condition of the vehicle and must be appraised at the Dealership to receive the Trade-In Allowance. \$1000 - Dealer Finance Discount (Must qualify and finance with GM Financial, not available with special financing rates or programs.) Price does not include tax, tag, and fees.



2020 Chevrolet Silverado 2500HD Custom

Parks Chevrolet, Inc. - 833-825-2763 - View this car on our website at parksdeals.com/7057958/ebrochure

Our Location :



2020 Chevrolet Silverado 2500HD Custom

Parks Chevrolet, Inc. - 833-825-2763 - View this car on our website at parksdeals.com/7057958/ebrochure

Installed Options

Interior

- Seats, front 40/20/40 split-bench (no storage) - Cloth seat trim
- Seat, rear 60/40 folding bench (folds up), 3-passenger (includes child seat top tether anchor)
- Floor mats, rubberized vinyl, front (Deleted when LPO floor liners are ordered.)
- Floor mats, rubberized-vinyl rear (Deleted when LPO floor liners are ordered.)
- Window, power front, passenger express down- Windows, power rear, express down
- Door locks, power- Remote Keyless Entry with 2 transmitters
- USB port, located on instrument panel- Air conditioning, single-zone
- Air vents, rear, heating/cooling- Seat adjuster, driver 4-way manual
- Seat adjuster, passenger 4-way manual- Floor covering, color-keyed carpeting
- Steering wheel, urethane
- Steering column, Tilt-Wheel, manual with wheel locking security feature
- Instrument cluster 6-gauge cluster featuring speedometer, fuel level, engine temperature, tachometer, voltage and oil pressure
- Driver Information Center, 3.5" diagonal monochromatic display
- Exterior Temperature Display located in radio display - Rear Seat Reminder
- Window, power front, drivers express up/down
- Cruise control, electronic with set and resume speed, steering wheel-mounted
- Power outlet, front auxiliary, 12-volt- Mirror, inside rearview, manual tilt
- Assist handles front A-pillar mounted for driver and passenger, rear B-pillar mounted

Exterior

- Headlamps, halogen reflector with halogen Daytime Running Lamps
- Mirrors, outside power-adjustable vertical trailing with heated upper glass, lower convex mirrors, integrated turn signals, manual folding/extending (extends 3.31" [84.25mm])
- Wheels, 20" (50.8 cm) machined aluminum with high gloss Black painted accents, 10-spoke
- Tires, LT275/65R20 all-terrain, blackwall- Tire, spare LT275/70R18 all-terrain, blackwall
- Tire carrier lock keyed cylinder lock that utilizes same key as ignition and door

Option Packages

Factory Installed Packages

ENGINE, 6.6L V8

with Direct Injection and Variable Valve Timing,
gasoline, (401 hp [299 kW] @ 5200 rpm, 464 lb-ft
of torque [629 N-m] @ 4000 rpm)

- Bumper, front (High Gloss Black.)- Bumper, rear (High Gloss Black.)
- CornerStep, rear bumper
- BedStep, Black integrated on forward portion of bed on driver and passenger side
- Moldings, beltline, Black- Cargo tie downs (12), fixed rated at 500 lbs per corner
- Grille (Front grille bar with "CHEVROLET" painted body color. Includes body color surround and Black mesh inserts with small Gold bowtie emblem.)
- Taillamps, LED with signature
- Lamps, cargo area, cab mounted integrated with center high mount stop lamp, with switch in bank on left side of steering wheel.
- Mirror caps, Black- Glass, deep-tinted- Tailgate and bed rail protection cap, top
- Tailgate, locking, utilizes same key as ignition and door (Upgraded to (QT5) EZ Lift power lock and release tailgate when (PCX) Custom Convenience Package is ordered.)
- Tailgate, gate function manual, no EZ Lift- Door handles, Black grained

Safety

- Seats, front 40/20/40 split-bench (no storage) - Cloth seat trim
- Seat, rear 60/40 folding bench (folds up), 3-passenger (includes child seat top tether anchor)
- Floor mats, rubberized vinyl, front (Deleted when LPO floor liners are ordered.)
- Floor mats, rubberized-vinyl rear (Deleted when LPO floor liners are ordered.)
- Window, power front, passenger express down- Windows, power rear, express down
- Door locks, power- Remote Keyless Entry with 2 transmitters
- USB port, located on instrument panel- Air conditioning, single-zone
- Air vents, rear, heating/cooling- Seat adjuster, driver 4-way manual
- Seat adjuster, passenger 4-way manual- Floor covering, color-keyed carpeting
- Steering wheel, urethane
- Steering column, Tilt-Wheel, manual with wheel locking security feature
- Instrument cluster 6-gauge cluster featuring speedometer, fuel level, engine temperature, tachometer, voltage and oil pressure
- Driver Information Center, 3.5" diagonal monochromatic display
- Exterior Temperature Display located in radio display - Rear Seat Reminder
- Window, power front, drivers express up/down
- Cruise control, electronic with set and resume speed, steering wheel-mounted
- Power outlet, front auxiliary, 12-volt- Mirror, inside rearview, manual tilt
- Assist handles front A-pillar mounted for driver and passenger, rear B-pillar mounted

Mechanical

- Transmission, 6-speed automatic, heavy-duty
- Recovery hooks, front, frame-mounted, Black (Not included when (VQY) Chrome recovery hooks, LPO is ordered.)
- Engine, 6.6L V8 with Direct Injection and Variable Valve Timing, gasoline, (401 hp [299 kW] @ 5200 rpm, 464 lb-ft of torque [629 N-m] @ 4000 rpm)
- Rear axle, 3.73 ratio- Durabed, pickup bed
- GVWR, 10,650 lbs. (4831 kg) (Included and only available with CK20743 model and (L8T) 6.6L V8 gas engine with 18" or 20" wheels or CK20943 and (L8T) 6.6L V8 gas engine with 17" wheels.)
- Air filter, high-capacity- Air filtration monitoring
- Transfer case, two-speed electronic shift with push button controls (Requires 4WD models.)
- Differential, heavy-duty locking rear- Four wheel drive- Cooling, external engine oil cooler
- Cooling, auxiliary external transmission oil cooler
- Battery, heavy-duty 720 cold-cranking amps/80 Amp-hr maintenance-free with rundown protection and retained accessory power (Included and only available with (L8T) 6.6L V8 gas engine.)
- Alternator, 170 amps
- Frame, fully-boxed, hydroformed front section and a fully-boxed stamped rear section
- Suspension Package- Steering, Recirculating Ball with smart flow power steering system
- Brakes, 4-wheel antilock, 4-wheel disc with DURALIFE rotors- Brake lining wear indicator
- Capless Fuel Fill (Requires (L8T) 6.6L V8 gas engine.)

Parks Chevrolet, Inc.

parksdeals.com

833-825-2763

615 NC-66 South

Kernersville, NC 27284

© 2024 AutoRevo - All rights reserved. - Powered by AutoRevo