



## 2019 Ford Super Duty F-350 DRW Lariat Crew Cab 6.7L Powerstroke Diesel Miller 804 Wrecker

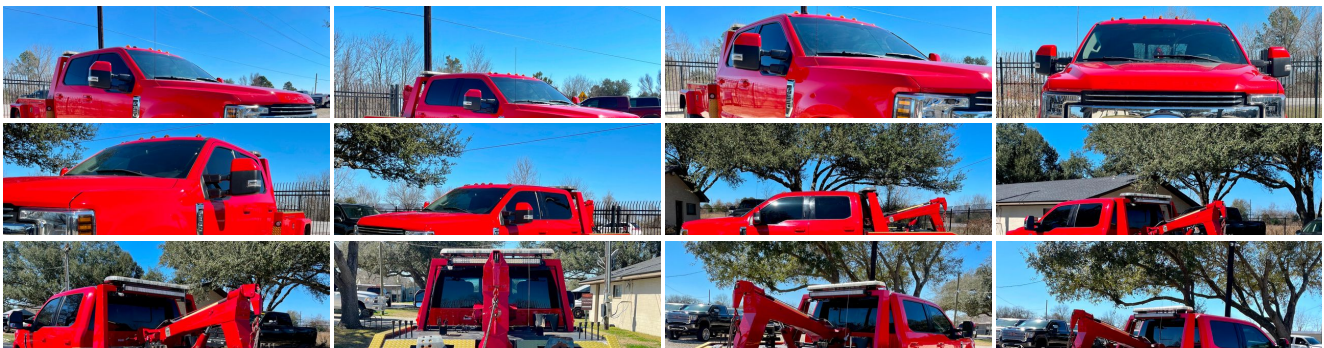
**Internet Price \$62,990**

View this vehicle on our website at [dieselsintexas.com](http://dieselsintexas.com)



(832) 818-1765 / (832) 696-3939  
3611 HWY 36 S, Sealy, Texas 77474

Photos  
Details  
Contact





## Specifications:

<b>Year:</b>	2019
<b>VIN:</b>	1FD8W3GT8KEC83106
<b>Make:</b>	Ford
<b>Stock:</b>	C83106
<b>Model/Trim:</b>	Super Duty F-350 DRW Lariat Crew Cab 6.7L Powerstroke Diesel Miller 804 Wrecker
<b>Condition:</b>	Pre-Owned
<b>Body:</b>	Pickup Truck
<b>Exterior:</b>	Race Red
<b>Engine:</b>	ENGINE: 6.7L 4V OHV POWER STROKE V8 TURBO DIESEL B20
<b>Interior:</b>	Black Leather
<b>Transmission:</b>	TRANSMISSION: TORQSHIFT 6-SPEED AUTOMATIC
<b>Mileage:</b>	63,788
<b>Drivetrain:</b>	Rear Wheel Drive

## Vehicle Description

DIESELSINTEXAS.COM

WE TAKE ALL TRADE-INS! WE DO NOT FINANCE, HOWEVER YOU CAN DO SO WITH ANY CREDIT UNION OR BANK. CALL TO SCHEDULE AN APPOINTMENT OR IF YOU HAVE ANY QUESTIONS.

### Vehicle History Report : as Of 07/04/2025



#### Snapshot

**2019 FORD F-350 SUPER DUTY LARIAT**



Accident reported: airbag deployed



7 Service history records



At least 1 open recall

### Installed Options

#### Interior

- 10-Way Power Driver Seat -inc: Power Recline, Height Adjustment, Fore/Aft Movement, Cushion Tilt and Power 2-Way Lumbar Support
- 10-Way Power Passenger Seat -inc: Power Recline, Height Adjustment, Fore/Aft Movement, Cushion Tilt and Power 2-Way Lumbar Support
- Front Seats w/Power 2-Way Driver Lumbar
- Full Carpet Floor Covering -inc: Carpet Front And Rear Floor Mats
- Gauges -inc: Speedometer, Odometer, Oil Pressure, Engine Coolant Temp, Tachometer, Transmission Fluid Temp, Engine Hour Meter, Trip Odometer and Trip Computer
- Power 1st Row Windows w/Driver And Passenger 1-Touch Up/Down
- Power Adjustable Pedals- Power Door Locks w/Autolock Feature- Power Rear Windows
- Remote Keyless Entry w/Integrated Key Transmitter, Illuminated Entry and Panic Button
- Trip Computer- 2 Seatback Storage Pockets- 4 12V DC Power Outlets- Air Filtration
- Cruise Control w/Steering Wheel Controls- Day-Night Auto-Dimming Rearview Mirror
- Delayed Accessory Power
- Driver And Passenger Visor Vanity Mirrors w/Driver And Passenger Illumination
- Fade-To-Off Interior Lighting- Front And Rear Map Lights- Front Cupholder
- Front Facing Fold-Up Cushion Rear Seat

1  
CARFAX 1-Owner  
vehicle

Corporate  
vehicle

63,788 Last reported odometer  
reading

**FREE CARFAX Report**

See the full CARFAX Report for additional information

\*carfax Snapshot is a reflection of available information on the date the report was pulled.  
carfax is constantly being updated with new information and is subject to change at any time.



- Front Leather Seating Surfaces 40/Console/40 -inc: 10-way power driver and passenger seating, 4-way adjustable driver/passenger headrests, matching 60/40 rear bench w/partitioned locking under-seat storage, 12V powerpoint and flow-through console w/110v/150w inverter outlet in rear
- Full Cloth Headliner
- Full Floor Console w/Locking Storage, Full Overhead Console w/Storage and 4 12V DC Power Outlets
- Garage Door Transmitter- HVAC -inc: Underseat Ducts and Console Ducts
- Illuminated Locking Glove Box
- Instrument Panel Covered Bin, Dashboard Storage, Driver / Passenger And Rear Door Bins and Locking 2nd Row Underseat Storage
- Interior Trim -inc: Metal-Look Instrument Panel Insert, Simulated Wood/Metal-Look Door Panel Insert, Simulated Wood/Leather Console Insert and Chrome/Metal-Look Interior Accents
- Keypad- Leather Steering Wheel- Manual Adjustable Rear Head Restraints
- Manual Tilt/Telescoping Steering Column- Outside Temp Gauge- Perimeter Alarm
- Rear Center Armrest- Rear Cupholder
- Securilock Anti-Theft Ignition (pats) Engine Immobilizer- Systems Monitor
- Underhood Lights- Urethane Gear Shifter Material
- Voice Activated Dual Zone Front Automatic Air Conditioning

## Exterior

- Black Power Heated Side Mirrors w/Convex Spotter, Power Folding and Turn Signal Indicator
- Running Boards- Tires: LT245/75R17E BSW PLUS A/S- Aluminum Panels
- Auto On/Off Aero-Composite Halogen Daytime Running Lights Preference Setting Headlamps w/Delay-Off
- Black Side Windows Trim and Black Front Windshield Trim
- Body-Colored Door Handles- Cab Clearance Lights
- Chrome Front Bumper w/Body-Colored Rub Strip/Fascia Accent and 2 Tow Hooks
- Chrome Grille- Clearcoat Paint- Deep Tinted Glass- Front Fog Lamps
- Front License Plate Bracket- Perimeter/Approach Lights
- Power Extendable Trailer Style Mirrors- Power Rear Window w/Defroster
- Variable Intermittent Wipers
- Wheels: 17" Forged Polished Aluminum -inc: bright hub covers/center ornaments (4 aluminum outer and 2 steel inner)

## Safety

- 10-Way Power Driver Seat -inc: Power Recline, Height Adjustment, Fore/Aft Movement, Cushion Tilt and Power 2-Way Lumbar Support
- 10-Way Power Passenger Seat -inc: Power Recline, Height Adjustment, Fore/Aft Movement, Cushion Tilt and Power 2-Way Lumbar Support
- Front Seats w/Power 2-Way Driver Lumbar
- Full Carpet Floor Covering -inc: Carpet Front And Rear Floor Mats
- Gauges -inc: Speedometer, Odometer, Oil Pressure, Engine Coolant Temp, Tachometer, Transmission Fluid Temp, Engine Hour Meter, Trip Odometer and Trip Computer
- Power 1st Row Windows w/Driver And Passenger 1-Touch Up/Down
- Power Adjustable Pedals- Power Door Locks w/Autolock Feature- Power Rear Windows
- Remote Keyless Entry w/Integrated Key Transmitter, Illuminated Entry and Panic Button
- Trip Computer- 2 Seatback Storage Pockets- 4 12V DC Power Outlets- Air Filtration
- Cruise Control w/Steering Wheel Controls- Day-Night Auto-Dimming Rearview Mirror
- Delayed Accessory Power
- Driver And Passenger Visor Vanity Mirrors w/Driver And Passenger Illumination
- Fade-To-Off Interior Lighting- Front And Rear Map Lights- Front Cupholder
- Front Facing Fold-Up Cushion Rear Seat
- Front Leather Seating Surfaces 40/Console/40 -inc: 10-way power driver and passenger seating, 4-way adjustable driver/passenger headrests, matching 60/40 rear bench w/partitioned locking under-seat storage, 12V powerpoint and flow-through console w/110v/150w inverter outlet in rear
- Full Cloth Headliner
- Full Floor Console w/Locking Storage, Full Overhead Console w/Storage and 4 12V DC Power Outlets
- Garage Door Transmitter- HVAC -inc: Underseat Ducts and Console Ducts
- Illuminated Locking Glove Box
- Instrument Panel Covered Bin, Dashboard Storage, Driver / Passenger And Rear Door Bins and Locking 2nd Row Underseat Storage
- Interior Trim -inc: Metal-Look Instrument Panel Insert, Simulated Wood/Metal-Look Door Panel Insert, Simulated Wood/Leather Console Insert and Chrome/Metal-Look Interior Accents
- Keypad- Leather Steering Wheel- Manual Adjustable Rear Head Restraints
- Manual Tilt/Telescoping Steering Column- Outside Temp Gauge- Perimeter Alarm
- Rear Center Armrest- Rear Cupholder
- Securilock Anti-Theft Ignition (pats) Engine Immobilizer- Systems Monitor
- Underhood Lights- Urethane Gear Shifter Material
- Voice Activated Dual Zone Front Automatic Air Conditioning



## Mechanical

- Engine: 6.2L 2-Valve SOHC EFI NA V8 (Flex-Fuel)- 3.73 Axle Ratio
- 4-Wheel Disc Brakes w/4-Wheel ABS, Front And Rear Vented Discs and Brake Assist
- 40 Gal. Fuel Tank- 50-State Emissions System- 7460# Maximum Payload
- 78-Amp/Hr 750CCA Maintenance-Free Battery w/Run Down Protection
- Dual Rear Wheels- Firm Suspension- Front And Rear Anti-Roll Bars
- Front Suspension w/Coil Springs- GVWR: 14,000 lb Payload Package
- HD 240 Amp Alternator- HD Shock Absorbers- Hydraulic Power-Assist Steering
- Leaf Rear Suspension w/Leaf Springs- Rear-Wheel Drive
- Single Stainless Steel Exhaust
- Towing Equipment -inc: Brake Controller and Trailer Sway Control
- Trailer Wiring Harness- Transmission w/Oil Cooler
- Transmission: TorqShift 6-Speed Automatic (6R140) -inc: SelectShift - Uplifter Switches

## Option Packages

### Factory Installed Packages

#### ENGINE: 6.7L 4V OHV POWER STROKE V8 TURBO DIESEL B20

-inc: Diesel Exhaust Fluid (DEF) tank, Intelligent Oil-Life Monitor, manual push-button engine-exhaust braking and split-shaft calibration compatibility, Dual Alternators (Total 332-Amps), Dual 78-AH 750 CCA Batteries

**\$9,120**

#### TRANSMISSION: TORQSHIFT 6-SPEED AUTOMATIC

-inc: (6R140), SelectShift

#### RACE RED

#### BLACK, FRONT LEATHER SEATING SURFACES 40/CONSOLE/40

-inc: 10-way power driver and passenger seating, 4-way adjustable driver/passenger headrests, matching 60/40 rear bench w/partitioned locking under-seat storage, 12V powerpoint and flow-through console w/110v/150w inverter outlet in rear

#### Option Packages Total

**\$9,120**

<p><span style="font-size: 16px;">We do not do any in-house financing, however, you can finance through your local bank or credit union. If you want us to hold a vehicle to prevent purchase from anyone else, we will require a minimum deposit of \$500 made through our PayPal account: [texasdiesels@yahoo.com](mailto:texasdiesels@yahoo.com). Please give us a call beforehand to ensure availability. However, if you can't complete the purchase, Texas Diesels will keep the deposit as a restocking fee. All deposits are NON-REFUNDABLE. Full payment is due before vehicle delivery. Buyers in all states are required to pay a flat \$250 administrative fee and \$50 documentry fee. These fees are collected by Texas Diesels and are not required by law. All buyers are also required to pay a \$5 buyer tag fee. Out-of-state buyers are responsible for taxes and registration fees in their own states. Texas residents pay a 6.25% state sales tax. Please have verifiable funds or pre-approved loan available at time of purchase. We will fax or mail you duplicate copies of the paperwork; one for you to keep, and one for you to sign and return. Once payment is received or the loan proceeds have been dispersed, you can then make arrangements to take delivery of the vehicle. The actual miles posted in this listing may be slightly higher due to in-transit repairs or customer road testing. All our vehicles are pre-owned and they are sold in AS-IS condition. All sales are finalized at our place of business. Pre-buy vehicle inspections are encouraged and will be performed on our premises. Inspections performed after the point of sale will not be accepted or considered. Some vehicles are still under factory warranty (check description) or an extended warranty may be purchased for most vehicles. We encourage trade-ins and can give you an estimated value of your vehicle over the phone or by e-mail. Once the vehicle leaves our location, all responsibility for the vehicle becomes that of the customer and/or the transport company. The buyer is responsible for all shipping fees or self-arranged transportation. It is agreed by all parties in relation to any transaction involving this vehicle that the proper venue for any legal proceedings will be conducted in Austin County, Texas. We describe all vehicles as accurately as possible; however it is not possible to include all minute details and imperfections. Books, records, and/or manuals will have pictures of those items; otherwise the vehicle does not include them. dieselsintexas.com is owned by Texas Diesels, a licensed and bonded car dealer in the state of Texas. It is the customer's sole responsibility to verify the existence and condition of any equipment listed. Neither the dealership nor AutoRevo is responsible for misprints on prices or equipment. It is the customer's sole responsibility to verify the accuracy of the prices with the dealer. Pricing subject to change without notice.</span></p></div>

Texas Diesels

Texas Diesels

View this car on our website at [dieselsintexas.com/7057446](https://dieselsintexas.com/7057446)

Website: [dieselsintexas.com](https://dieselsintexas.com)

Phone: (832) 818-1765 / (832) 696-3939

Map: 3611 HWY 36 S, Sealy, Texas 77474

