



2018 Ford Super Duty F-250 Black Ops Crew Cab 4X4 6.7L Powerstroke Diesel LIFTED

Internet Price \$52,990

View this vehicle on our website at dieselsintexas.com



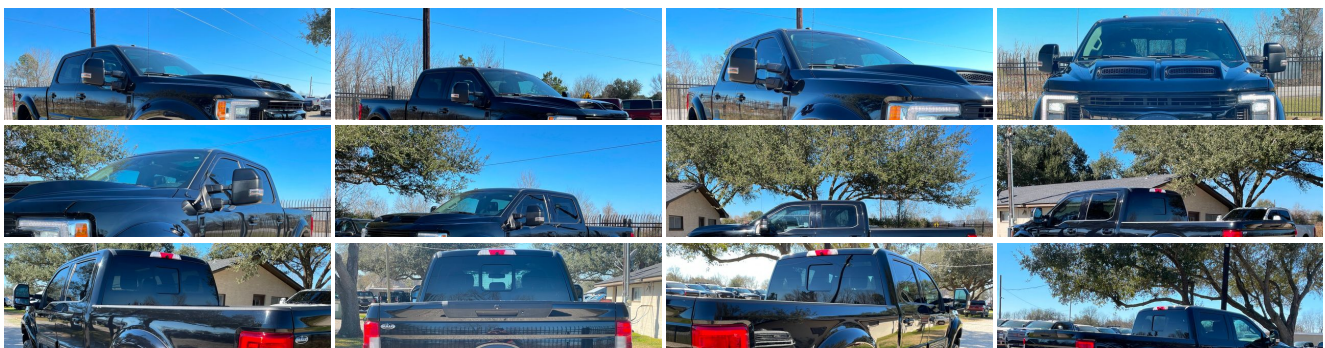
(832) 818-1765 / (832) 696-3939

3611 HWY 36 S, Sealy, Texas 77474

[Photos](#)

[Details](#)

[Contact](#)





Specifications:

Year:	2018
VIN:	1FT7W2BT8JEB93079
Make:	Ford
Stock:	B93079
Model/Trim:	Super Duty F-250 Black Ops Crew Cab 4X4 6.7L Powerstroke Diesel LIFTED
Condition:	Pre-Owned
Body:	Pickup Truck
Exterior:	Shadow Black
Engine:	ENGINE: 6.7L 4V OHV POWER STROKE V8 TURBO DIESEL B20
Interior:	Black Leather
Transmission:	TRANSMISSION: TORQSHIFT 6-SPEED AUTOMATIC
Mileage:	111,872
Drivetrain:	4 Wheel Drive

Vehicle Description

DIESELSINTEXAS.COM

WE TAKE ALL TRADE-INS! WE DO NOT FINANCE, HOWEVER YOU CAN DO SO WITH ANY CREDIT UNION OR BANK. CALL TO SCHEDULE AN APPOINTMENT OR IF YOU HAVE ANY QUESTIONS.

Installed Options

Interior

- 10-Way Power Driver Seat -inc: Power Recline, Height Adjustment, Fore/Aft Movement, Cushion Tilt and Power 2-Way Lumbar Support
- 10-Way Power Passenger Seat -inc: Power Recline, Height Adjustment, Fore/Aft Movement, Cushion Tilt and Power 2-Way Lumbar Support
- Cruise Control w/Steering Wheel Controls
- Driver And Passenger Visor Vanity Mirrors w/Driver And Passenger Illumination
- Front Seats w/Power 2-Way Driver Lumbar
- Full Carpet Floor Covering -inc: Carpet Front And Rear Floor Mats
- Gauges -inc: Speedometer, Odometer, Oil Pressure, Engine Coolant Temp, Tachometer, Transmission Fluid Temp, Engine Hour Meter, Trip Odometer and Trip Computer
- Manual Tilt/Telescoping Steering Column
- Power 1st Row Windows w/Driver And Passenger 1-Touch Up/Down
- Power Adjustable Pedals- Power Door Locks w/Autolock Feature- Power Rear Windows
- Remote Keyless Entry w/Integrated Key Transmitter, Illuminated Entry and Panic Button
- Trip Computer
- 110V/400W Outlet -inc: 1 in-dash mounted outlet and 2nd outlet in the console
- 2 Seatback Storage Pockets- Air Filtration- Day-Night Auto-Dimming Rearview Mirror

Option Packages

Factory Installed Packages

ENGINE: 6.7L 4V OHV POWER STROKE V8 TURBO DIESEL B20
-inc: manual push-button engine-exhaust braking and intelligent oil-life monitor, Extra Heavy-Duty 220 Amp Alternator, 34 Gallon Fuel Tank, 3.31 Axle Ratio, Dual 78-AH 750 CCA Batteries **\$9,120**

TRANSMISSION: TORQSHIFT 6-SPEED AUTOMATIC
-inc: (6R140), SelectShift

MONOTONE PAINT APPLICATION

SHADOW BLACK

BLACK, FRONT LEATHER SEATING SURFACES

- Delayed Accessory Power- Fade-To-Off Interior Lighting
- Flow-Through Console -inc: 110V/400W outlet in rear - Front And Rear Map Lights
- Front Cupholder- Front Facing Fold-Up Cushion Rear Seat
- Front Leather Seating Surfaces 40/Console/40 -inc: 10-way power driver and passenger seating (includes power lumbar), 4-way adjustable driver/passenger headrests, matching 60/40 rear bench w/partitioned locking under-seat storage and 12V powerpoint
- Full Cloth Headliner- Full Overhead Console w/Storage
- HVAC -inc: Underseat Ducts and Console Ducts - Illuminated Locking Glove Box
- Instrument Panel Covered Bin, Dashboard Storage, Driver / Passenger And Rear Door Bins and Locking 2nd Row Underseat Storage
- Interior Trim -inc: Metal-Look Instrument Panel Insert, Simulated Wood/Metal-Look Door Panel Insert, Simulated Wood/Leather Console Insert and Chrome/Metal-Look Interior Accents
- Keypad- Leather Steering Wheel- Manual Adjustable Rear Head Restraints
- Outside Temp Gauge- Perimeter Alarm- Rear Center Armrest- Rear Cupholder
- Securilock Anti-Theft Ignition (pats) Engine Immobilizer- Systems Monitor
- Underhood And Pickup Cargo Box Lights- Urethane Gear Shifter Material
- Voice Activated Dual Zone Front Automatic Air Conditioning

Exterior

- Auto On/Off Aero-Composite Halogen Daytime Running Lights Preference Setting Headlamps w/Delay-Off
- Black Power Heated Side Mirrors w/Convex Spotter, Power Folding and Turn Signal Indicator
- Front Fog Lamps- Tailgate/Rear Door Lock Included w/Power Door Locks
- Tires: LT275/65Rx18E BSW A/S- Variable Intermittent Wipers
- Wheels: 18" Bright Machined Cast Aluminum -inc: magnetic painted pockets and bright hub covers/center ornaments
- Aluminum Panels- Black Side Windows Trim and Black Front Windshield Trim
- Body-Colored Door Handles- Cargo Lamp w/High Mount Stop Light
- Chrome Front Bumper w/Body-Colored Rub Strip/Fascia Accent and 2 Tow Hooks
- Chrome Grille- Chrome Rear Step Bumper- Clearcoat Paint- Deep Tinted Glass
- Front License Plate Bracket- Full-Size Spare Tire Stored Underbody w/Crankdown
- Perimeter/Approach Lights- Power Extendable Trailer Style Mirrors
- Power Rear Window w/Defroster- Regular Box Style- Steel Spare Wheel
- Tailgate Rear Cargo Access

Safety

- 10-Way Power Driver Seat -inc: Power Recline, Height Adjustment, Fore/Aft Movement, Cushion Tilt and Power 2-Way Lumbar Support
- 10-Way Power Passenger Seat -inc: Power Recline, Height Adjustment, Fore/Aft Movement, Cushion Tilt and Power 2-Way Lumbar Support
- Cruise Control w/Steering Wheel Controls
- Driver And Passenger Visor Vanity Mirrors w/Driver And Passenger Illumination
- Front Seats w/Power 2-Way Driver Lumbar
- Full Carpet Floor Covering -inc: Carpet Front And Rear Floor Mats
- Gauges -inc: Speedometer, Odometer, Oil Pressure, Engine Coolant Temp, Tachometer, Transmission Fluid Temp, Engine Hour Meter, Trip Odometer and Trip Computer
- Manual Tilt/Telescoping Steering Column
- Power 1st Row Windows w/Driver And Passenger 1-Touch Up/Down
- Power Adjustable Pedals- Power Door Locks w/Autolock Feature- Power Rear Windows
- Remote Keyless Entry w/Integrated Key Transmitter, Illuminated Entry and Panic Button
- Trip Computer
- 110V/400W Outlet -inc: 1 in-dash mounted outlet and 2nd outlet in the console
- 2 Seatback Storage Pockets- Air Filtration- Day-Night Auto-Dimming Rearview Mirror
- Delayed Accessory Power- Fade-To-Off Interior Lighting
- Flow-Through Console -inc: 110V/400W outlet in rear - Front And Rear Map Lights
- Front Cupholder- Front Facing Fold-Up Cushion Rear Seat
- Front Leather Seating Surfaces 40/Console/40 -inc: 10-way power driver and passenger seating (includes power lumbar), 4-way adjustable driver/passenger headrests, matching 60/40 rear bench w/partitioned locking under-seat storage and 12V powerpoint
- Full Cloth Headliner- Full Overhead Console w/Storage
- HVAC -inc: Underseat Ducts and Console Ducts - Illuminated Locking Glove Box
- Instrument Panel Covered Bin, Dashboard Storage, Driver / Passenger And Rear Door Bins and Locking 2nd Row Underseat Storage
- Interior Trim -inc: Metal-Look Instrument Panel Insert, Simulated Wood/Metal-Look Door Panel Insert, Simulated Wood/Leather Console Insert and Chrome/Metal-Look Interior Accents
- Keypad- Leather Steering Wheel- Manual Adjustable Rear Head Restraints
- Outside Temp Gauge- Perimeter Alarm- Rear Center Armrest- Rear Cupholder
- Securilock Anti-Theft Ignition (pats) Engine Immobilizer- Systems Monitor
- Underhood And Pickup Cargo Box Lights- Urethane Gear Shifter Material
- Voice Activated Dual Zone Front Automatic Air Conditioning

40/CONSOLE/40

-inc: 10-way power driver and passenger seating (includes power lumbar), 4-way adjustable driver/passenger headrests, matching 60/40 rear bench w/partitioned locking under-seat storage and 12V powerpoint

Option Packages Total

\$9,120

Mechanical

- Class V Towing Equipment -inc: Hitch, Brake Controller and Trailer Sway Control
- Engine: 6.2L 2-Valve SOHC EFI NA V8 Flex-Fuel -inc: Flex-Fuel badge on fleet orders only
- 3.73 Axle Ratio- 34 Gal. Fuel Tank- 3470# Maximum Payload
- 4-Wheel Disc Brakes w/4-Wheel ABS, Front And Rear Vented Discs, Brake Assist and Hill Hold Control
- 50-State Emissions System
- 78-Amp/Hr 750CCA Maintenance-Free Battery w/Run Down Protection
- Auto Locking Hubs- Electronic Transfer Case- Firm Suspension- Front Anti-Roll Bar
- Front Suspension w/Coil Springs- GVWR: 10,000 lb Payload Package
- HD 200 Amp Alternator- HD Shock Absorbers- Hydraulic Power-Assist Steering
- Leaf Rear Suspension w/Leaf Springs- Part-Time Four-Wheel Drive
- Single Stainless Steel Exhaust- Trailer Wiring Harness- Transmission w/Oil Cooler
- Transmission: TorqShift-G 6-Spd Auto w/SelectShift

<div id="termsAndConditionsCollapsibleDiv" style="display: block;"> <p> We do not do any in-house financing, however, you can finance through your local bank or credit union. If you want us to hold a vehicle to prevent purchase from anyone else, we will require a minimum deposit of \$500 made through our PayPal account: texasdiesels@yahoo.com. Please give us a call beforehand to ensure availability. However, if you can't complete the purchase, Texas Diesels will keep the deposit as a restocking fee. All deposits are NON-REFUNDABLE. Full payment is due before vehicle delivery. Buyers in all states are required to pay a flat \$250 administrative fee and \$50 documentry fee. These fees are collected by Texas Diesels and are not required by law. All buyers are also required to pay a \$5 buyer tag fee. Out-of-state buyers are responsible for taxes and registration fees in their own states. Texas residents pay a 6.25% state sales tax. Please have verifiable funds or pre-approved loan available at time of purchase. We will fax or mail you duplicate copies of the paperwork; one for you to keep, and one for you to sign and return. Once payment is received or the loan proceeds have been dispersed, you can then make arrangements to take delivery of the vehicle. The actual miles posted in this listing may be slightly higher due to in-transit repairs or customer road testing. All our vehicles are pre-owned and they are sold in "AS-IS" condition. All sales are finalized at our place of business. Pre-buy vehicle inspections are encouraged and will be performed on our premises. Inspections performed after the point of sale will not be accepted or considered. Some vehicles are still under factory warranty (check description) or an extended warranty may be purchased for most vehicles. We encourage trade-ins and can give you an estimated value of your vehicle over the phone or by e-mail. Once the vehicle leaves our location, all responsibility for the vehicle becomes that of the customer and/or the transport company. The buyer is responsible for all shipping fees or self-arranged transportation. It is agreed by all parties in relation to any transaction involving this vehicle that the proper venue for any legal proceedings will be conducted in Austin County, Texas. We describe all vehicles as accurately as possible; however it is not possible to include all minute details and imperfections. Books, records, and/or manuals will have pictures of those items; otherwise the vehicle does not include them. dieselsintexas.com is owned by Texas Diesels, a licensed and bonded car dealer in the state of Texas. It is the customer's sole responsibility to verify the existence and condition of any equipment listed. Neither the dealership nor AutoRevo is responsible for misprints on prices or equipment. It is the customer's sole responsibility to verify the accuracy of the prices with the dealer. Pricing subject to change without notice.</p> </div>

Texas Diesels

Texas Diesels

View this car on our website at dieselsintexas.com/7057435

Website: dieselsintexas.com

Phone: (832) 818-1765 / (832) 696-3939

Map: [3611 HWY 36 S, Sealy, Texas 77474](#)

