

parksdeals.com  
833-825-2763  
615 NC-66 South  
Kernersville, NC  
27284

Parks Chevrolet,  
Inc.

## 2022 Chevrolet Traverse Premier

View this car on our website at [parksdeals.com/7056943/ebrochure](https://parksdeals.com/7056943/ebrochure)



Our Price **\$50,065**

Retail Value **\$50,565**

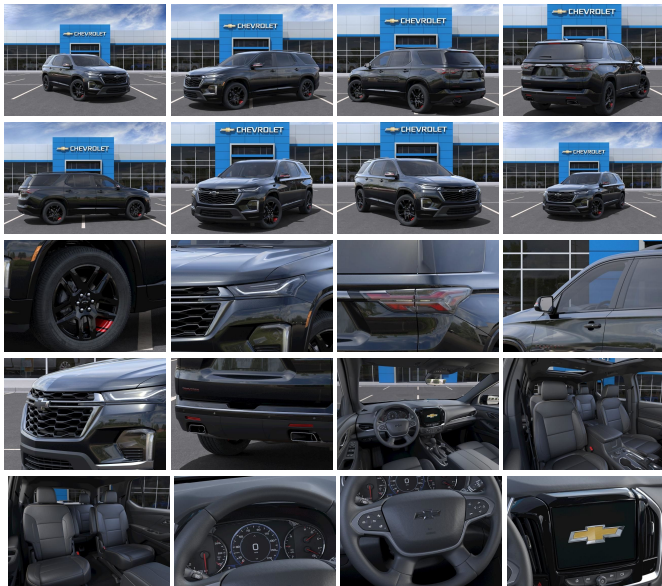
### Specifications:

**Year:** 2022  
**VIN:** 1GNERKKW2NJ135921  
**Make:** Chevrolet  
**Stock:** 135921  
**Model/Trim:** Traverse Premier  
**Condition:** New  
**Body:** SUV  
**Exterior:** Mosaic Black Metallic  
**Engine:** ENGINE, 3.6L V6, SIDI, VVT  
**Interior:** Jet Blk Perf Lth St Trm Leather  
**Mileage:** 0  
**Drivetrain:** Front Wheel Drive  
**Economy:** City 18 / Highway 27

2022 Chevrolet Traverse Premier Mosaic Black Metallic 3.6L V6 SIDI VVT FWD 9-Speed Automatic

4-Wheel Disc Brakes, 6-Way Power Front Passenger Seat, 8-Way Power Driver Seat Adjuster, ABS brakes, Air Conditioning, Alloy wheels, Automatic temperature control, Black Door Handles, Black Roof Rails, Bose Premium 10-Speaker Audio System Feature, Dual front impact airbags, Dual front side impact airbags, Dual SkyScape 2-Panel Power Sunroof, Emergency communication system: OnStar Guidance, Front anti-roll bar, Front Bucket Seats, Front dual zone A/C, Heated 2nd Row Outboard Position Seats, Heated Driver & Front Passenger Seats, Heated Steering Wheel, Heavy-Duty Cooling System, Hitch Guidance w/Hitch View, Low tire pressure warning, Memory seat, Navigation System, Occupant sensing airbag, Ornammentation, Overhead airbag, Panic alarm, Power driver seat, Power Liftgate, Power steering, Power windows, Preferred Equipment Group 1LZ, Premium audio system: Chevrolet Infotainment 3 Plus, Radio: Chevrolet Infotainment 3 Plus System w/Navi, Rear air conditioning, Rear anti-roll bar, Rear Park Assist w/Audible Warning, Rear window defroster, Redline Accent Decals (LPO), Redline Edition, Remote keyless entry, Security system, SiriusXM w/360L, Steering wheel memory, Steering wheel mounted audio controls, Trailing Assist Guidelines, Trailing Equipment, Variably intermittent wipers, Ventilated Driver & Front Passenger Seats, Wheels: 20" Gloss Black Painted Alum w/Red Stripes.

Contact us online at [www.parkscharlotte.com](http://www.parkscharlotte.com) or give us a call at (704) 288-0662 to have your questions answered, obtain a price quote for this vehicle, or schedule your test drive today. Our prices cannot be beat! Come visit us at 8530 IKEA BLVD CHARLOTTE NC. Price excludes administrative, origination, documentary, procurement and/or other administrative fee. You may or may not qualify for all rebates. Price does not include tax, tag, and fees. Price does not include any aftermarket products, bodies, or upfits. Price includes applicable rebates:\$500 - Customer Cash. Exp. 04/04/2022



## Vehicle History Report : as Of 04/23/2024

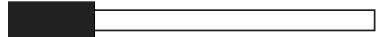
**CARFAX**

Snapshot

**2022 CHEVROLET TRAVERSE PREMIER**



**Accident reported: minor damage**



MINOR MODERATE SEVERE

6 Service history records



2 Previous owners



Personal vehicle



9,166 Last reported odometer reading



**FREE CARFAX Report**

See the full CARFAX Report for additional information

\*carfax Snapshot is a reflection of available information on the date the report was pulled. carfax is constantly being updated with new information and is subject to change at any time.

## Our Location :



2022 Chevrolet Traverse Premier

Parks Chevrolet, Inc. - 833-825-2763 - View this car on our website at [parksdeals.com/7056943/ebrochure](https://parksdeals.com/7056943/ebrochure)

## Installed Options

### Interior

- Seats, front bucket- Seating, 7-passenger (2-2-3 seating configuration)
- Seat trim, perforated leather-appointed- Seat adjuster, driver 8-way power
- Seat adjuster, power driver lumbar control
- Memory Package recalls 2 "presets" for power driver seat, outside mirrors and power tilt and telescopic steering column
- Seats, third row 60/40 split-bench, manual-folding
- Floor mats, color-keyed all rows (Deleted when LPO floor mats or LPO floor liners are ordered.)
- Steering column, power tilt and telescopic
- Steering wheel controls, mounted controls for audio, phone and cruise
- Door locks, power programmable with lockout protection
- Keyless Open includes extended range Remote Keyless Entry with lock/unlock feature
- Adaptive Cruise Control- Remote panic alarm
- Theft-deterrent system, electrical, unauthorized entry
- Seat adjuster, front passenger 6-way power
- Seat adjuster, power passenger lumbar control
- Seats, heated driver and front passenger (Vehicles built prior to 11-15-2021 include heated driver and front passenger seats. Certain vehicles built on or after 11-15-2021 will be forced to include (00V) Not Equipped with Heated Driver and Front Passenger Seats, which removes heated driver and front passenger seats. See dealer for details or the window label for the features on a specific vehicle.)
- Seats, ventilated driver and front passenger (Vehicles built prior to 11-15-2021 include

## Option Packages

### Factory Installed Packages

ENGINE, 3.6L V6, SIDI, VVT  
(310 hp [232.0 kW] @ 6800 rpm, 266 lb-ft of torque [361 N-m] @ 2800 rpm)

Driver and Front Passenger Ventilated Seats. Certain vehicles built on or after 11-15-2021 will be forced to include (00V) Not Equipped with Driver and Front Passenger Ventilated Seats, which removes driver and front passenger ventilated seats. See dealer for details or the window label for the features on a specific vehicle.)

- Seats, heated rear outboard seating positions (Vehicles built prior to 11-15-2021 include heated rear outboard seats. Certain vehicles built on or after 11-15-2021 will be forced to include (00R) Not Equipped with Heated Rear Outboard Seats, which removes heated rear outboard seats. See dealer for details or the window label for the features on a specific vehicle.)
- Head restraints, front, 2-way adjustable
- Head restraints, second and third row outboard, 2-way manual-folding
- Console, front center with 2 cup holders, covered storage bin with storage and removable tray
- Steering wheel, leather-wrapped, 3-spoke
- Steering wheel, heated (Vehicles built prior to November 22, 2021, include heated steering wheel. Certain vehicles built on or after November 22, 2021, will be forced to include (00G) Not Equipped with Heated Steering Wheel, which removes heated steering wheel. See dealer for details or the window label for the features on a specific vehicle.)
- Display, 8" driver instrument information, customizable, enhanced, multi-color
- Compass display, digital
- Windows, power with driver Express Up/Down and front passenger Express-Down
- Remote Start- Keyless Start
- Universal Home Remote includes garage door opener, programmable
- Vehicle health management- Wireless Phone Charging
- USB ports 2 first row, 2 second row, 2 third row
- Power outlet, 120-volt, located on the rear of center console
- Air conditioning, tri-zone automatic climate control with individual climate settings for driver, right front passenger and rear seat occupants
- Sensor, humidity and windshield temperature- Defogger, rear-window electric
- Heater ducts, 2nd row- Cup holders, 10 total
- Umbrella holders, driver and front passenger doors
- Visors, driver and passenger illuminated vanity mirrors, covered
- Lighting, interior with theater dimming, cargo compartment, reading lights for front seats, second row reading lamps integrated into dome light, door-and tailgate-activated switches and illuminated entry and exit feature
- Cargo storage, bin under rear floor
- Chevrolet Connected Access capable (Subject to terms. See onstar.com or dealer for details.)

---

## Exterior

- Wheels, 20" (50.8 cm) Metallic machined-face aluminum
- Tires, P255/55R20 all-season blackwall- IntelliBeam, auto high beam control
- Wheel, spare, 18" (45.7 cm) steel- Tire, compact spare, T135/70R18, blackwall
- Roof rails, chrome (Not available when (WBL) Redline Edition is ordered.)
- Active Aero Shutters, upper- Headlamps, LED- Headlamps, automatic on/off
- Taillamps, LED- Mirror caps, body-color
- Mirrors, outside heated, power-adjustable, power-folding, body-color driver-side auto-dimming with integrated turn signal indicators
- Glass, deep-tinted- Wipers, front intermittent with washers
- Wiper, rear intermittent with washer- Rear Camera Mirror Washer
- Door handles, Bright chrome- Liftgate, rear power, hands free with emblem projection

---

## Safety

- Seats, front bucket- Seating, 7-passenger (2-2-3 seating configuration)
- Seat trim, perforated leather-appointed- Seat adjuster, driver 8-way power
- Seat adjuster, power driver lumbar control
- Memory Package recalls 2 "presets" for power driver seat, outside mirrors and power tilt and telescopic steering column
- Seats, third row 60/40 split-bench, manual-folding
- Floor mats, color-keyed all rows (Deleted when LPO floor mats or LPO floor liners are ordered.)
- Steering column, power tilt and telescopic
- Steering wheel controls, mounted controls for audio, phone and cruise
- Door locks, power programmable with lockout protection
- Keyless Open includes extended range Remote Keyless Entry with lock/unlock feature
- Adaptive Cruise Control- Remote panic alarm
- Theft-deterrent system, electrical, unauthorized entry
- Seat adjuster, front passenger 6-way power
- Seat adjuster, power passenger lumbar control
- Seats, heated driver and front passenger (Vehicles built prior to 11-15-2021 include heated driver and front passenger seats. Certain vehicles built on or after 11-15-2021 will be forced to include (00V) Not Equipped with Heated Driver and Front Passenger Seats, which removes heated driver and front passenger seats. See dealer for details or the window label for the features on a specific vehicle.)
- Seats, ventilated driver and front passenger (Vehicles built prior to 11-15-2021 include

Driver and Front Passenger Ventilated Seats. Certain vehicles built on or after 11-15-2021 will be forced to include (00V) Not Equipped with Driver and Front Passenger Ventilated Seats, which removes driver and front passenger ventilated seats. See dealer for details or the window label for the features on a specific vehicle.)

- Seats, heated rear outboard seating positions (Vehicles built prior to 11-15-2021 include heated rear outboard seats. Certain vehicles built on or after 11-15-2021 will be forced to include (00R) Not Equipped with Heated Rear Outboard Seats, which removes heated rear outboard seats. See dealer for details or the window label for the features on a specific vehicle.)
- Head restraints, front, 2-way adjustable
- Head restraints, second and third row outboard, 2-way manual-folding
- Console, front center with 2 cup holders, covered storage bin with storage and removable tray
- Steering wheel, leather-wrapped, 3-spoke
- Steering wheel, heated (Vehicles built prior to November 22, 2021, include heated steering wheel. Certain vehicles built on or after November 22, 2021, will be forced to include (00G) Not Equipped with Heated Steering Wheel, which removes heated steering wheel. See dealer for details or the window label for the features on a specific vehicle.)
- Display, 8" driver instrument information, customizable, enhanced, multi-color
- Compass display, digital
- Windows, power with driver Express Up/Down and front passenger Express-Down
- Remote Start- Keyless Start
- Universal Home Remote includes garage door opener, programmable
- Vehicle health management- Wireless Phone Charging
- USB ports 2 first row, 2 second row, 2 third row
- Power outlet, 120-volt, located on the rear of center console
- Air conditioning, tri-zone automatic climate control with individual climate settings for driver, right front passenger and rear seat occupants
- Sensor, humidity and windshield temperature- Defogger, rear-window electric
- Heater ducts, 2nd row- Cup holders, 10 total
- Umbrella holders, driver and front passenger doors
- Visors, driver and passenger illuminated vanity mirrors, covered
- Lighting, interior with theater dimming, cargo compartment, reading lights for front seats, second row reading lamps integrated into dome light, door-and tailgate-activated switches and illuminated entry and exit feature
- Cargo storage, bin under rear floor
- Chevrolet Connected Access capable (Subject to terms. See onstar.com or dealer for details.)

---

## Mechanical

- Transmission, 9-speed automatic
- Engine, 3.6L V6, SIDI, VVT (310 hp [232.0 kW] @ 6800 rpm, 266 lb-ft of torque [361 N-m] @ 2800 rpm)
- E10 Fuel capable- Engine control, stop-start system
- Engine control, stop-start system override- Driver Mode Selector
- Axle, 3.49 final drive ratio- Front wheel drive
- Battery, heavy-duty 600 cold-cranking amps- Alternator, 170 amps
- GVWR, 6160 lbs. (2800 kg)- Suspension, Ride and Handling- Steering, power
- Brakes, 4-wheel antilock, 4-wheel disc, 17" front and rear- Electric Parking Brake
- Capless fuel fill- Exhaust, dual-outlet with rectangular bright tips
- Tool kit, road emergency

---

Parks Chevrolet, Inc.

[parksdeals.com](https://parksdeals.com)

833-825-2763

615 NC-66 South

Kernersville, NC 27284

© 2024 AutoRevo - All rights reserved. - Powered by AutoRevo