

2021 Ford Super Duty F-250 Pickup LARIAT

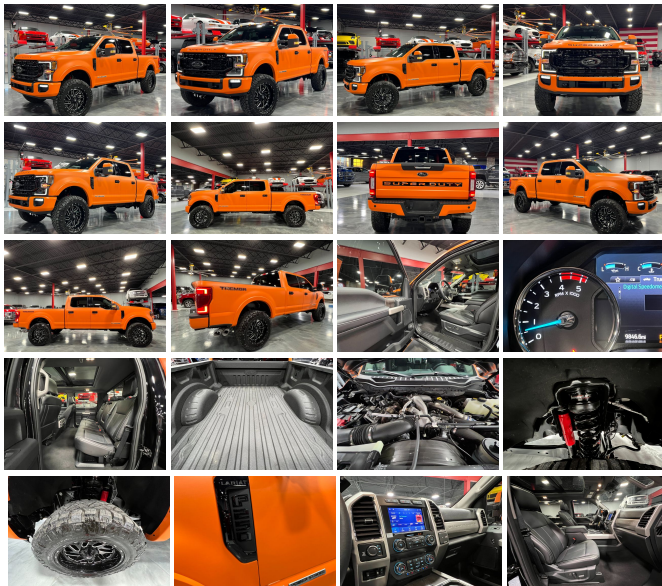
View this car on our website at njtruckking.com/7055700/ebrochure



Our Price **\$94,900**

Specifications:

Year:	2021
VIN:	1FT8W2BTXMEC80748
Make:	Ford
Model/Trim:	Super Duty F-250 Pickup LARIAT
Condition:	Pre-Owned
Body:	Pickup Truck
Exterior:	Orange
Engine:	ENGINE: 6.7L 4V OHV POWER STROKE V8 TURBO DIESEL B20
Interior:	Black Leather
Mileage:	9,846
Drivetrain:	4 Wheel Drive



2021 FORD F250 4X4 CREW
~LARIAT ULTIMATE TREMOR PACKAGE~
6.7L POWERSTROKE TURBO DIESEL
AUTOMATIC TRANSMISSION
(ONLY 9,846 ORIGINAL / ACTUAL MILES)
LIKE NEW
LEVELING KIT
22" FUEL WHEELS
37" NITTO RIDGE GRAPP TIRES
MATTE ORANGE WRAP
BLACK UNDERNEATH
TINT
WOW!
THIS TRUCK DEMANDS ATTENTION!
TRUE HEAD TURNER!
DONT MISS IT!

BUY IT NOW
\$94,900
CALL / TEXT ROB 856-381-6621 WITH ANY QUESTIONS

Our Location :



2021 Ford Super Duty F-250 Pickup LARIAT
 King of Cars and Trucks - 856-693-3181 - View this car on our website at njtruckking.com/7055700/ebrochure

Installed Options

Interior

- Flow-Through Console -inc: 110V/400W outlet in rear
- Front Leather Seating Surfaces 40/Console/40 -inc: 10-way power driver and 8-way power front passenger seating (includes power lumbar) and 2-way adjustable driver/passenger headrests
- Full Carpet Floor Covering -inc: Carpet Front And Rear Floor Mats
- Gauges -inc: Speedometer, Odometer, Oil Pressure, Engine Coolant Temp, Tachometer, Transmission Fluid Temp, Engine Hour Meter, Trip Odometer and Trip Computer
- Interior Trim -inc: Metal-Look Instrument Panel Insert, Simulated Wood/Metal-Look Door Panel Insert and Chrome/Metal-Look Interior Accents
- Leather Steering Wheel- Manual Tilt/Telescoping Steering Column
- Power 1st Row Windows w/Driver And Passenger 1-Touch Up/Down
- Power Adjustable Pedals- Power Door Locks w/Autolock Feature- Power Rear Windows
- Remote Keyless Entry w/Integrated Key Transmitter, Illuminated Entry and Panic Button
- Smart Device Remote Engine Start- Trip Computer
- 110V/400W Outlet -inc: 1 in-dash mounted outlet - 2 Seatback Storage Pockets
- 60-40 Folding Split-Bench Front Facing Fold-Up Cushion Rear Seat - Air Filtration
- Cruise Control w/Steering Wheel Controls- Day-Night Auto-Dimming Rearview Mirror
- Delayed Accessory Power- Digital/Analog Appearance
- Driver And Passenger Visor Vanity Mirrors w/Driver And Passenger Illumination
- Driver Seat- Fade-To-Off Interior Lighting
- FordPass Connect 4G Mobile Hotspot Internet Access- Front And Rear Map Lights
- Front Cupholder- Full Cloth Headliner- Full Overhead Console w/Storage
- HVAC -inc: Underseat Ducts- Illuminated Locking Glove Box
- Instrument Panel Covered Bin, Dashboard Storage, Driver / Passenger And Rear Door Bins and Locking 2nd Row Underseat Storage
- Keypad- Manual Adjustable Rear Head Restraints- Outside Temp Gauge
- Passenger Seat- Perimeter Alarm- Rear Center Armrest- Rear Cupholder
- Seats w/Leatherette Back Material
- Securilock Anti-Theft Ignition (pats) Engine Immobilizer- Systems Monitor

Option Packages

Factory Installed Packages

ENGINE: 6.7L 4V OHV POWER STROKE V8 TURBO DIESEL B20
 -inc: manual push-button engine-exhaust braking and intelligent oil-life monitor, 240 Amp Alternator, 34 Gallon Fuel Tank, 3.31 Axle Ratio, Dual 78-AH 750 CCA Batteries

Option Packages Total \$10,495

- Underhood And Pickup Cargo Box Lights- Urethane Gear Shifter Material
- Voice Activated Dual Zone Front Automatic Air Conditioning

Exterior

- Autolamp Auto On/Off Aero-Composite Halogen Auto High-Beam Daytime Running Lights Preference Setting Headlamps w/Delay-Off
- Chrome Front Bumper w/Body-Colored Rub Strip/Fascia Accent and 2 Tow Hooks
- Front Fog Lamps- Tailgate/Rear Door Lock Included w/Power Door Locks
- Tires: LT275/65R18E BSW A/S -inc: Spare may not be the same as road tire
- Variable Intermittent Wipers
- Wheels: 18" Bright Machined Cast Aluminum -inc: magnetic painted pockets and bright hub covers/center ornaments
- Aluminum Panels- Black Side Windows Trim and Black Front Windshield Trim
- Body-Colored Door Handles- Body-Colored Side Mirrors
- Cargo Lamp w/High Mount Stop Light- Chrome Grille- Chrome Rear Step Bumper
- Clearcoat Paint- Deep Tinted Glass- Headlights-Automatic Highbeams
- Perimeter/Approach Lights- Power Rear Window w/Defroster
- PowerScope Trailer Tow Mirrors w/Heat -inc: power-folding w/Autofold, telescoping, power glass, turn signal, high intensity LED security approach lamps and utility lighting system (LED side-mirror spotlights)
- Regular Box Style- Spare Tire Stored Underbody w/Crankdown- Steel Spare Wheel
- Tailgate Rear Cargo Access

Safety

- Flow-Through Console -inc: 110V/400W outlet in rear
- Front Leather Seating Surfaces 40/Console/40 -inc: 10-way power driver and 8-way power front passenger seating (includes power lumbar) and 2-way adjustable driver/passenger headrests
- Full Carpet Floor Covering -inc: Carpet Front And Rear Floor Mats
- Gauges -inc: Speedometer, Odometer, Oil Pressure, Engine Coolant Temp, Tachometer, Transmission Fluid Temp, Engine Hour Meter, Trip Odometer and Trip Computer
- Interior Trim -inc: Metal-Look Instrument Panel Insert, Simulated Wood/Metal-Look Door Panel Insert and Chrome/Metal-Look Interior Accents
- Leather Steering Wheel- Manual Tilt/Telescoping Steering Column
- Power 1st Row Windows w/Driver And Passenger 1-Touch Up/Down
- Power Adjustable Pedals- Power Door Locks w/Autolock Feature- Power Rear Windows
- Remote Keyless Entry w/Integrated Key Transmitter, Illuminated Entry and Panic Button
- Smart Device Remote Engine Start- Trip Computer
- 110V/400W Outlet -inc: 1 in-dash mounted outlet - 2 Seatback Storage Pockets
- 60-40 Folding Split-Bench Front Facing Fold-Up Cushion Rear Seat - Air Filtration
- Cruise Control w/Steering Wheel Controls- Day-Night Auto-Dimming Rearview Mirror
- Delayed Accessory Power- Digital/Analog Appearance
- Driver And Passenger Visor Vanity Mirrors w/Driver And Passenger Illumination
- Driver Seat- Fade-To-Off Interior Lighting
- FordPass Connect 4G Mobile Hotspot Internet Access- Front And Rear Map Lights
- Front Cupholder- Full Cloth Headliner- Full Overhead Console w/Storage
- HVAC -inc: Underseat Ducts- Illuminated Locking Glove Box
- Instrument Panel Covered Bin, Dashboard Storage, Driver / Passenger And Rear Door Bins and Locking 2nd Row Underseat Storage
- Keypad- Manual Adjustable Rear Head Restraints- Outside Temp Gauge
- Passenger Seat- Perimeter Alarm- Rear Center Armrest- Rear Cupholder
- Seats w/Leatherette Back Material
- Securilock Anti-Theft Ignition (pats) Engine Immobilizer- Systems Monitor
- Underhood And Pickup Cargo Box Lights- Urethane Gear Shifter Material
- Voice Activated Dual Zone Front Automatic Air Conditioning

Mechanical

- Class V Towing Equipment -inc: Hitch, Brake Controller and Trailer Sway Control
- Engine: 6.2L 2-Valve SOHC EFI NA V8 Flex-Fuel
- Transmission: TorqShift-G 6-Spd Auto w/SelectShift- 3.73 Axle Ratio- 34 Gal. Fuel Tank
- 3470# Maximum Payload
- 4-Wheel Disc Brakes w/4-Wheel ABS, Front And Rear Vented Discs, Brake Assist and Hill Hold Control
- 50-State Emissions System
- 78-Amp/Hr 750CCA Maintenance-Free Battery w/Run Down Protection
- Auto Locking Hubs- Electronic Transfer Case- Firm Suspension- Front Anti-Roll Bar
- Front Suspension w/Coil Springs- GVWR: 10,000 lb Payload Package
- HD 200 Amp Alternator- HD Shock Absorbers- Hydraulic Power-Assist Steering
- Leaf Rear Suspension w/Leaf Springs- Part-Time Four-Wheel Drive
- Single Stainless Steel Exhaust- Trailer Wiring Harness- Transmission w/Oil Cooler

King of Cars and Trucks

njtrucking.com

856-693-3181

1229 Broadway

Westville, New Jersey 08093

© 2024 AutoRevo - All rights reserved. - Powered by [AutoRevo](#)