

2022 Chevrolet Silverado 1500 LTD LTZ

View this car on our website at parksdeals.com/7055627/ebrochure



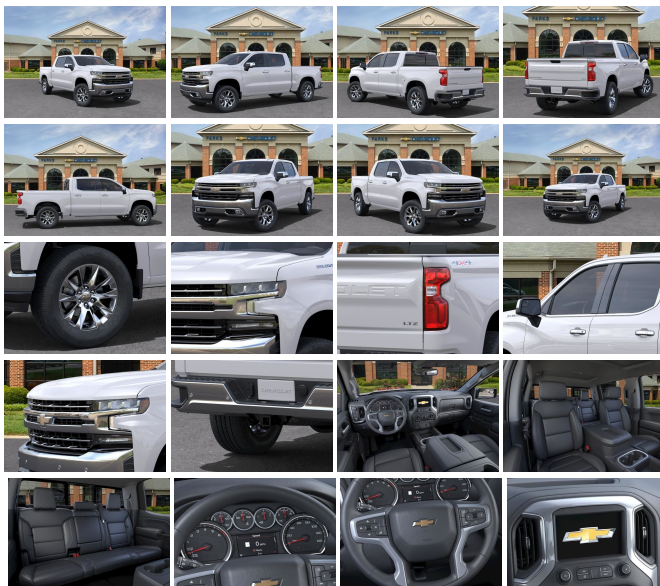
Our Price **\$55,565**

Specifications:

Year:	2022
VIN:	3GCUYGED4NG193223
Make:	Chevrolet
Stock:	193223
Model/Trim:	Silverado 1500 LTD LTZ
Condition:	New
Body:	Pickup Truck
Exterior:	Iridescent Prl
Engine:	ENGINE, 5.3L ECOTEC3 V8
Interior:	Jet Blk Perforated Lth-Ap Leather
Mileage:	0
Drivetrain:	4 Wheel Drive
Economy:	City 14 / Highway 18

2022 Chevrolet Silverado 1500 LTZ Iridescent Pearl Tricoat EcoTec3 5.3L V8 8-Speed Automatic

8-Speed Automatic, 4WD, Jet Black Leather, 10-Way Power Driver Seat w/Lumbar, 10-Way Power Passenger Seat Adjuster w/Lumbar, 120-Volt Bed Mounted Power Outlet, 120-Volt Instrument Panel Power Outlet, 12-Volt Rear Auxiliary Power Outlet, 2 USB Ports, 2 USB Ports (First Row), 4.2" Diagonal Color Display Driver Info Center, 4-Wheel Disc Brakes, ABS brakes, Advanced Trailering System, Air Conditioning, Alloy wheels, Apple CarPlay/Android Auto, Auto-Dimming Inside Rear-View Mirror, Auto-Locking Rear Differential, Auxiliary External Transmission Oil Cooler, Bluetooth?? For Phone, Brake assist, Chevrolet Connected Access Capable, Chrome Grille, Chrome Mirror Caps, Color-Keyed Carpeting Floor Covering, Deep-Tinted Glass, Driver Memory, Dual front impact airbags, Dual front side impact airbags, Electric Rear-Window Defogger, Electronic Cruise Control, Electronic Stability Control, Floor Mounted Center Console, Front anti-roll bar, Front dual zone A/C, Front Frame-Mounted Black Recovery Hooks, Front LED Fog Lamps, Front Rubberized Vinyl Floor Mats, Front wheel independent suspension, HD Rear Vision Camera, Heated Driver & Front Outboard Passenger Seats, Heated Steering Wheel, Hitch Guidance, Hitch Guidance w/Hitch View, Integrated Trailer Brake Controller, Keyless Open & Start, Lane Change Alert w/Side Blind Zone Alert, Leather Wrapped Steering Wheel, LED Cargo Area Lighting, Low tire pressure warning, LTZ Convenience Package, LTZ Plus Package, Manual Tilt/Telescoping Steering Column, Memory seat, Occupant sensing airbag, OnStar & Chevrolet Connected Services Capable, Outside Heated Power-Adjustable Mirrors, Overhead airbag, Perimeter Lighting, Power Door Locks, Power Front Passenger Windows w/Express Up/Down, Power Front Windows w/Driver Express Up/Down, Power Rear Windows w/Express Down, Power Sliding Rear Window



w/Rear Defogger, Power steering, Power Tailgate, Power windows, Preferred Equipment Group 1LZ, Rear Cross Traffic Alert, Rear Dual USB Charging-Only Ports, Rear Rubberized-Vinyl Floor Mats, Rear Wheelhouse Liners, Rear window defroster, Remote keyless entry, Remote Vehicle Starter System, Safety Package, Standard Tailgate, Steering Wheel Audio Controls, Steering wheel mounted audio controls, Theft Deterrent System (Unauthorized Entry), Trailing Package, Ultrasonic Front & Rear Park Assist, Universal Home Remote, Up-Level Rear Seat w/Storage Package, Variably intermittent wipers, Ventilated Driver & Front Passenger Seats, We Deliver, Wi-Fi Hot Spot Capable, Wireless Phone Projection. \$1000 - Dealer Trade-in Allowance (Must own and trade a 2015 or newer passenger vehicle to qualify for the Dealer Trade-in Allowance), Allowance is \$1000 above True Car Cash Offer. This offer is based on the current condition of the vehicle and must be appraised at the Dealership to receive the Trade-In Allowance. \$1000 is reflected in the vehicle discount. \$1000 - Dealer Finance Discount (Must qualify and finance with GM Financial, not available with special financing rates or programs.) You may or may not qualify for all rebates. Price does not include tax, tag, and fees. Price does not include any aftermarket products, bodies, or upfits. Price includes applicable rebates:

Contact us online at www.parkschevrolethuntersville.com or give us a call at (704) 209-9961 to have your questions answered, obtain a price quote for this vehicle, or schedule your test drive today. Our prices cannot be beat! Come visit us at 15235 STATESVILLE ROAD HUNTERSVILLE NC.

2022 Chevrolet Silverado 1500 LTD LTZ

Parks Chevrolet, Inc. - 833-825-2763 - View this car on our website at parksdeals.com/7055627/ebrochure

Vehicle History Report : as Of 05/01/2024

CARFAX

Snapshot

**2022 CHEVROLET SILVERADO 1500 LIMITED
LTZ**



Damage reported: minor damage



13 Service history records



CARFAX 1-Owner vehicle



Personal vehicle



48,031 Last reported odometer reading



FREE CARFAX Report

See the full CARFAX Report for additional information

*carfax Snapshot is a reflection of available information on the date the report was pulled. carfax is constantly being updated with new information and is subject to change at any time.

Our Location :



2022 Chevrolet Silverado 1500 LTD LTZ

Parks Chevrolet, Inc. - 833-825-2763 - View this car on our website at parksdeals.com/7055627/ebrochure

Installed Options

Interior

- Seats, front bucket with center console (Deleted when (RG7) Fleet LTZ Base Content Delete is ordered.)
- Seat trim, Perforated leather-appointed front
- Driver memory recalls driver "presets" for power driver seat and outside mirrors
- Seat, Up-level Rear with Storage Package 60/40 folding bench for Crew Cab models, includes full-length bench seat, seatback storage on left and right side, center fold out armrest with 2 cupholders, full cab width underseat storage, (includes child seat top tether anchor)
- Floor mats, rubberized vinyl, front (Deleted when (BKF) Floor liners or LPO floor liners are ordered.)
- Floor mats, rubberized-vinyl rear (Deleted when (BKF) Floor liners or LPO floor liners are ordered.)
- Window, power front, passenger express up/down- Windows, power rear, express down
- Window, power, rear sliding with rear defogger (Deleted when (RG7) Fleet LTZ Base Content Delete is ordered.)
- Door locks, power- Keyless Open and Start
- Universal Home Remote (Deleted when (RG7) Fleet LTZ Base Content Delete is ordered.)
- Cruise control, electronic with set and resume speed, steering wheel-mounted
- Power outlet, front auxiliary, 12-volt
- USB ports, 2 (first row) located on instrument panel (Deleted when (RG7) Fleet LTZ Base Content Delete is ordered.)

Option Packages

Factory Installed Packages

ENGINE, 5.3L ECOTEC3 V8

(355 hp [265 kW] @ 5600 rpm, 383 lb-ft of torque [518 Nm] @ 4100 rpm); featuring available Dynamic Fuel Management that enables the engine to operate in 17 different patterns between 2 and 8 cylinders, depending on demand, to optimize power delivery and efficiency

- USB Ports (Inside Console with bucket seats), 2 also includes 1 SD card reader and auxiliary jack (With (RG7) Fleet LTZ Base Content Delete the USB ports move to the instrument panel and the auxiliary jack is removed.)
- Power outlet, rear auxiliary, 12-volt- Air conditioning, dual-zone automatic climate control
- Air vents, rear, heating/cooling- Defogger, rear-window electric
- Mirror, inside rearview auto-dimming- Seat adjuster, driver 10-way power including lumbar
- Seat adjuster, passenger 10-way power including lumbar
- Seating, heated driver and front outboard passenger (Vehicles built prior to 11-15-2021 include heated driver and front outboard passenger seats. Certain vehicles built on or after 11-15-2021 will be forced to include (00V) Not Equipped with Heated or Ventilated Front Seats, which removes heated front seats. See dealer for details or the window label for the features on a specific vehicle. Feature will not function on certain models without dealer retrofit, expected late Q2, 2022, see dealer for details.) (Vehicles built prior to 11-15-2021 include heated driver and front outboard passenger seats. Certain vehicles built on or after 11-15-2021 will be forced to include (00V) Not Equipped with Heated or Ventilated Front Seats, which removes heated front seats. See dealer for details or the window label for the features on a specific vehicle. Feature will not function on certain models without dealer retrofit, expected late Q2, 2022, see dealer for details.)
- Seats, ventilated driver and front passenger (Vehicles built prior to 11-15-2021 include ventilated driver and front passenger seats. Certain vehicles built on or after 11-15-2021 will be forced to include (00V) Not Equipped with Heated or Ventilated Front Seats, which removes ventilated front seats. See dealer for details or the window label for the features on a specific vehicle. Feature will not function on certain models without dealer retrofit, expected late Q2, 2022, see dealer for details.) (Deleted when (RG7) Fleet LTZ Base Content Delete is ordered. Vehicles built prior to 11-15-2021 not equipped with (RG7) Fleet LTZ Base Content Delete include ventilated driver and front passenger seats. Certain vehicles built on or after 11-15-2021 will be forced to include (00V) Not Equipped with Heated or Ventilated Front Seats, which removes ventilated front seats. See dealer for details or the window label for the features on a specific vehicle. Feature will not function on certain models without dealer retrofit, expected late Q2, 2022, see dealer for details.)
- Center Console, floor-mounted with cup holders, cell phone storage, power cord management, hanging file folder capability (Deleted when (RG7) Fleet LTZ Base Content Delete is ordered.)
- Floor covering, color-keyed carpeting- Steering wheel, leather-wrapped
- Steering wheel, heated (Vehicles built prior to 12-6-2021 include heated steering wheel. Vehicles built on or after 12-6-2021 will be forced to include (00G) Not Equipped with Heated Steering Wheel, which removes the heated steering wheel. See dealer for details or the window label for the features on a specific vehicle.)
- Steering wheel audio controls- Steering column, manual tilt and telescoping
- Instrument cluster, 6-gauge cluster featuring speedometer, fuel level, engine temperature, tachometer, voltage and oil pressure
- Driver Information Center, 4.2" diagonal color display includes driver personalization
- Exterior Temperature Display located in radio display
- Compass located in instrument cluster- Rear Seat Reminder
- Window, power front, drivers express up/down- Remote vehicle starter system
- Theft-deterrent system, unauthorized entry
- Power outlet, instrument panel, 120-volt (400 watts shared with (KC9) bed mounted power outlet)
- USB ports, dual, charge-only (2nd row)
- Power outlet, bed mounted, 120-volt (400 watts shared with (KI4) instrument panel mounted power outlet)
- Assist handles front A-pillar mounted for driver and passenger, rear B-pillar mounted
- Chevrolet Connected Access capable (Subject to terms. See onstar.com or dealer for details.)

Exterior

- Wheels, 20" x 9" (50.8 cm x 22.9 cm) Polished finish
- Tires, 275/60R20 all-season, blackwall- Tire, spare 255/80R17SL all-season, blackwall
- Recovery hooks, front, frame-mounted, Black (Standard on 4WD models.)
- Headlamps, LED reflector with LED signature Daytime Running Lamps
- Mirrors, outside heated power-adjustable, power-folding and driver-side auto-dimming puddle lamps, side perimeter lighting and memory
- Wheel, 17" x 8" (43.2 cm x 20.3 cm) full-size, steel spare
- Tire carrier lock, keyed cylinder lock that utilizes same key as ignition and door
- Bumper, front chrome- Bumper, rear chrome- CornerStep, rear bumper
- Cargo tie downs (12), fixed rated at 500 lbs per corner - Wheelhouse liners, rear
- Grille (Chrome bars with high gloss Black mesh and Chrome inserts.)
- Fog lamps, front, LED
- Lamps, cargo area, cab mounted integrated with center high mount stop lamp, with switch in bank on left side of steering wheel
- LED Cargo Area Lighting located in pickup bed, activated with switch on center switch bank or key fob
- Taillamps, LED with signature- Mirror caps, chrome- Glass, deep-tinted
- Door handles, chrome- Tailgate and bed rail protection cap, top - Tailgate, standard
- Tailgate, gate function power up/down with power lock and release (Not available with (QK2) Multi-Flex tailgate.)

Safety

- Seats, front bucket with center console (Deleted when (RG7) Fleet LTZ Base Content

Delete is ordered.)

- Seat trim, Perforated leather-appointed front
- Driver memory recalls driver "presets" for power driver seat and outside mirrors
- Seat, Up-level Rear with Storage Package 60/40 folding bench for Crew Cab models, includes full-length bench seat, seatback storage on left and right side, center fold out armrest with 2 cupholders, full cab width underseat storage, (includes child seat top tether anchor)
- Floor mats, rubberized vinyl, front (Deleted when (BKF) Floor liners or LPO floor liners are ordered.)
- Floor mats, rubberized-vinyl rear (Deleted when (BKF) Floor liners or LPO floor liners are ordered.)
- Window, power front, passenger express up/down- Windows, power rear, express down
- Window, power, rear sliding with rear defogger (Deleted when (RG7) Fleet LTZ Base Content Delete is ordered.)
- Door locks, power- Keyless Open and Start
- Universal Home Remote (Deleted when (RG7) Fleet LTZ Base Content Delete is ordered.)
- Cruise control, electronic with set and resume speed, steering wheel-mounted
- Power outlet, front auxiliary, 12-volt
- USB ports, 2 (first row) located on instrument panel (Deleted when (RG7) Fleet LTZ Base Content Delete is ordered.)
- USB Ports (Inside Console with bucket seats), 2 also includes 1 SD card reader and auxiliary jack (With (RG7) Fleet LTZ Base Content Delete the USB ports move to the instrument panel and the auxiliary jack is removed.)
- Power outlet, rear auxiliary, 12-volt- Air conditioning, dual-zone automatic climate control
- Air vents, rear, heating/cooling- Defogger, rear-window electric
- Mirror, inside rearview auto-dimming- Seat adjuster, driver 10-way power including lumbar
- Seat adjuster, passenger 10-way power including lumbar
- Seating, heated driver and front outboard passenger (Vehicles built prior to 11-15-2021 include heated driver and front outboard passenger seats. Certain vehicles built on or after 11-15-2021 will be forced to include (00V) Not Equipped with Heated or Ventilated Front Seats, which removes heated front seats. See dealer for details or the window label for the features on a specific vehicle. Feature will not function on certain models without dealer retrofit, expected late Q2, 2022, see dealer for details.) (Vehicles built prior to 11-15-2021 include heated driver and front outboard passenger seats. Certain vehicles built on or after 11-15-2021 will be forced to include (00V) Not Equipped with Heated or Ventilated Front Seats, which removes heated front seats. See dealer for details or the window label for the features on a specific vehicle. Feature will not function on certain models without dealer retrofit, expected late Q2, 2022, see dealer for details.)
- Seats, ventilated driver and front passenger (Vehicles built prior to 11-15-2021 include ventilated driver and front passenger seats. Certain vehicles built on or after 11-15-2021 will be forced to include (00V) Not Equipped with Heated or Ventilated Front Seats, which removes ventilated front seats. See dealer for details or the window label for the features on a specific vehicle. Feature will not function on certain models without dealer retrofit, expected late Q2, 2022, see dealer for details.) (Deleted when (RG7) Fleet LTZ Base Content Delete is ordered. Vehicles built prior to 11-15-2021 not equipped with (RG7) Fleet LTZ Base Content Delete include ventilated driver and front passenger seats. Certain vehicles built on or after 11-15-2021 will be forced to include (00V) Not Equipped with Heated or Ventilated Front Seats, which removes ventilated front seats. See dealer for details or the window label for the features on a specific vehicle. Feature will not function on certain models without dealer retrofit, expected late Q2, 2022, see dealer for details.)
- Center Console, floor-mounted with cup holders, cell phone storage, power cord management, hanging file folder capability (Deleted when (RG7) Fleet LTZ Base Content Delete is ordered.)
- Floor covering, color-keyed carpeting- Steering wheel, leather-wrapped
- Steering wheel, heated (Vehicles built prior to 12-6-2021 include heated steering wheel. Vehicles built on or after 12-6-2021 will be forced to include (00G) Not Equipped with Heated Steering Wheel, which removes the heated steering wheel. See dealer for details or the window label for the features on a specific vehicle.)
- Steering wheel audio controls- Steering column, manual tilt and telescoping
- Instrument cluster, 6-gauge cluster featuring speedometer, fuel level, engine temperature, tachometer, voltage and oil pressure
- Driver Information Center, 4.2" diagonal color display includes driver personalization
- Exterior Temperature Display located in radio display
- Compass located in instrument cluster- Rear Seat Reminder
- Window, power front, drivers express up/down- Remote vehicle starter system
- Theft-deterrent system, unauthorized entry
- Power outlet, instrument panel, 120-volt (400 watts shared with (KC9) bed mounted power outlet)
- USB ports, dual, charge-only (2nd row)
- Power outlet, bed mounted, 120-volt (400 watts shared with (K14) instrument panel mounted power outlet)
- Assist handles front A-pillar mounted for driver and passenger, rear B-pillar mounted
- Chevrolet Connected Access capable (Subject to terms. See onstar.com or dealer for details.)

Mechanical

- Transmission, 8-speed automatic, electronically controlled with overdrive and tow/haul mode. Includes Cruise Grade Braking and Powertrain Grade Braking (Included and only available with (L84) 5.3L EcoTec3 V8 engine.)
- Advanced Trailering System includes checklist, trailer maintenance reminders, trailer security alerts, trailer mileage, tow/haul reminder, trailer electrical diagnostics and Trailer

Tire Pressure Monitor System module

- Engine, 5.3L EcoTec3 V8 (355 hp [265 kW] @ 5600 rpm, 383 lb-ft of torque [518 Nm] @ 4100 rpm); featuring available Dynamic Fuel Management that enables the engine to operate in 17 different patterns between 2 and 8 cylinders, depending on demand, to optimize power delivery and efficiency
- Rear axle, 3.23 ratio- Durabed, pickup bed
- GVWR, 7100 lbs. (3221 kg) (Requires Crew Cab 4WD model with (L84) 5.3L EcoTec3 V8 engine or (L87) 6.2L EcoTec3 V8 engine without (NHT) Max Trailering Package.)
- Automatic Stop/Start (Standard on vehicles equipped with (MQE) 8-speed automatic transmission or (LM2) Duramax 3.0L Turbo-Diesel I6 engine. Vehicles with a V8 engine and (MQB) 10-speed automatic will have (NSS) Not Equipped with Automatic Stop/Start, which removes Automatic Stop/Start and its content. See dealer for details.)
- Transfer case, single speed electronic Autotrac with push button control (4WD models only)
- Auto-locking rear differential- Four wheel drive
- Cooling, external engine oil cooler (Not available with (LM2) Duramax 3.0L Turbo-Diesel I6 engine.)
- Cooling, auxiliary external transmission oil cooler (Not available with (LM2) Duramax 3.0L Turbo-Diesel I6 engine.)
- Battery, heavy-duty 730 cold-cranking amps/80 Amp-hr, maintenance-free with rundown protection and retained accessory power
- Alternator, 170 amps (Included and only available with (L84) 5.3L EcoTec3 V8 engine or (L87) 6.2L EcoTec3 V8 engine. Not available with (LM2) Duramax 3.0L Turbo-Diesel I6 engine or (NHT) Max Trailering Package.) (Included and only available with (L84) 5.3L EcoTec3 V8 engine or (L87) 6.2L EcoTec3 V8 engine. Not available with (NHT) Max Trailering Package, (LM2) Duramax 3.0L Turbo-Diesel I6 engine or (VYU) Snow Plow Prep Package.)
- Trailer brake controller, integrated- Frame, fully-boxed, hydroformed front section
- Steering, Electric Power Steering (EPS) assist, rack-and-pinion
- Brakes, 4-wheel antilock, 4-wheel disc with DURALIFE rotors- Brake lining wear indicator
- Capless Fuel Fill- Exhaust, single outlet

Parks Chevrolet, Inc.

parksdeals.com

833-825-2763

615 NC-66 South

Kernersville, NC 27284

© 2024 AutoRevo - All rights reserved. - Powered by AutoRevo