

parksdeals.com
833-825-2763
615 NC-66 South
Kernersville, NC
27284

Parks Chevrolet,
Inc.

2021 Chevrolet Suburban LT

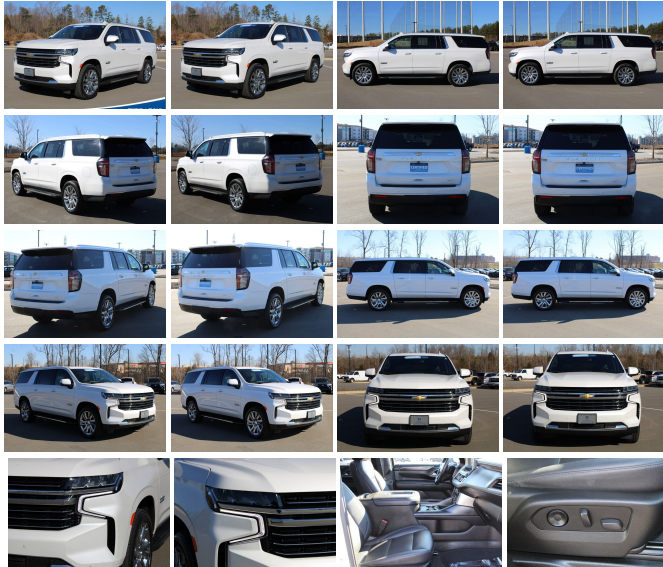
View this car on our website at parksdeals.com/7055132/ebrochure



Our Price **\$71,987**

Specifications:

Year: 2021
VIN: 1GN5CCKD0MR228008
Make: Chevrolet
Stock: 2C3649
Model/Trim: Suburban LT
Condition: Pre-Owned
Body: SUV
Exterior: Iridescent Pearl Tricoat
Engine: ENGINE, 5.3L ECOTEC3 V8
Interior: Black Leather
Mileage: 15,300
Drivetrain: Rear Wheel Drive
Economy: City 15 / Highway 20



2021 Chevrolet Suburban LT Certified.

10-Way Power Driver & Passenger Seat Adjusters, 1st & 2nd Row Color-Keyed Carpeted Floor Mats, 2 USB Data Ports, 2nd Row Pwr Release 60/40 Split-Folding Bench Seat, 3rd Row 60/40 Power-Folding Split-Bench, ABS brakes, Advanced Trailering Package, Advanced Trailering System, Apple CarPlay/Android Auto, Auto-Dimming Inside Rear-View Mirror, Automatic Heated Steering Wheel, Bose 9-Speaker Stereo Audio System Feature, Bright Front & Rear Door Sill Plates, Color-Keyed Carpeting Floor Covering, Driver & Front Outboard Passenger Airbags, Driver Alert Package, Dual-Pane Power Panoramic Sunroof, Extra Capacity Cooling System, Floor Console w/Storage Area, Front & Rear Park Assist, Hands-Free Rear Power Programmable Liftgate, HD Radio, HD Surround Vision, Heated 2nd Row Outboard Seats, Heated Driver & Front Passenger Seats, Hitch Guidance w/Hitch View, Infotainment Display, Integrated Trailer Brake Controller, Lane Change Alert w/Side Blind Zone Alert, Lane Keep Assist w/Lane Departure Warning, Leather-Wrapped Steering Wheel, LED Daytime Running Lamps, LT Signature Package, Luxury Package, Max Trailering Package, Memory Settings, Memory Settings For Driver, Outside Heated Power-Adjustable Mirrors, Power Tilt & Telescopic Steering Column, Preferred Equipment Group 1LT, Rear Cross Traffic Alert, Rear Pedestrian Alert, Remote Start, SiriusXM Radio w/360L, Texas Edition, Texas Edition Badging, Universal Home Remote. CARFAX One-Owner.

Call 704.288.0662 to check on the availability of this vehicle and schedule a private showing or shop 24 hours a day @ WWW.PARKSCHARLOTTE.COM. *All prices are plus tax, tag, title, and documentation. All vehicles are fully reconditioned by a Master ASE Factory Trained Certified Technician.

Vehicle History Report : as Of 04/19/2024



Snapshot

2021 CHEVROLET SUBURBAN LT



Accident reported: minor damage



5 Service history records



At least 1 open recall



2 Previous owners



61,229 Last reported odometer reading



FREE CARFAX Report

See the full CARFAX Report for additional information

*carfax Snapshot is a reflection of available information on the date the report was pulled. carfax is constantly being updated with new information and is subject to change at any time.

Our Location :



2021 Chevrolet Suburban LT

Parks Chevrolet, Inc. - 833-825-2763 - View this car on our website at parksdeals.com/7055132/ebrochure

Installed Options

Interior

- Seats, front bucket- Seat trim, leather-appointed front seats
- Seats, second row 60/40 split-folding bench, manual
- Seats, third row 60/40 split-folding bench, manual
- Floor mats, color-keyed carpeted first and second row, removable
- Steering column, manual tilt and telescopic
- Steering wheel controls, mounted audio Driver Information Center, cruise control, Forward Collision Alert following gap button and heated steering wheel (when equipped)
- Door locks, power programmable with lockout protection and delayed locking
- Keyless Open includes extended range Remote Keyless Entry
- Cruise control, electronic with set and resume speed
- USB data ports 2, one type-A and one type-C, includes SD Card Reader, located within front center console (When (DCH) power-sliding center console is ordered, relocated within instrument panel.)
- USB data ports, 2, one type-A and one type-C, located within center console (Deleted when (DCH) power-sliding center console is ordered.)
- Window, power with driver Express-Up/Down
- Window, power with front passenger Express-Up/Down
- Windows, power with rear Express-Down
- Memory settings, recalls 2 "driver" presets for power driver seat
- Air conditioning, tri-zone automatic climate control with individual climate settings for driver, right front passenger and rear seat occupants
- Air conditioning, rear. Keyless start, push button

Option Packages

Factory Installed Packages

ENGINE, 5.3L ECOTEC3 V8
with Dynamic Fuel Management, Direct Injection and Variable Valve Timing, includes aluminum block construction (355 hp [265 kW] @ 5600 rpm, 383 lb-ft of torque [518 Nm] @ 4100 rpm)

- Air conditioning, rear- Keyless start, push button
- Seat adjusters, 10-way power includes 8-way power driver and front passenger seats with 2-way power lumbar
- Seats, heated driver and front passenger
- Console, floor with storage area and removable storage tray
- Floor covering, color-keyed carpeting- Electronic Precision Shift
- Steering wheel, leather-wrapped
- Driver Information Center, 4.2" diagonal color display includes driver personalization
- Rear Seat Reminder- Remote start
- Universal Home Remote includes garage door opener, programmable
- Theft-deterrent system, electrical, unauthorized entry
- Wireless charging (Standard on vehicles built before 7-12-2021. Vehicles built on or after 7-12-2021, will have (00C) Not Equipped with Wireless Charging which removes Wireless Charging and its content. See dealer for details. The system wirelessly charges one compatible mobile device. Some phones have built-in wireless charging technology and others require a special adaptor/back cover. To check for phone or other device compatibility, see my.chevrolet.com/learnAbout/wireless-charging or consult your carrier.)
- USB charging-only ports, 4, (2) located on rear of center console and (2) in 3rd row
- Defogger, rear-window electric
- Power outlets, 2, 120-volt, located on the rear of the center console and rear cargo area
- Power outlet, front auxiliary, 12-volt, located in the center stack of instrument panel
- Sill plates, bright, front and rear door - Mirror, inside rearview auto-dimming
- Visors, driver and front passenger illuminated vanity mirrors, sliding
- Assist handles, overhead, driver and front passenger, located in headliner
- Assist handles, front passenger A-pillar and second row outboard B-pillar
- Lighting, interior with dome light, driver- and passenger-side door switch with delayed entry feature, cargo lights, door handle or Remote Keyless Entry-activated illuminated entry and map lights in front and second seat positions
- Cargo management system
- Chevrolet Connected Access capable (Subject to terms. See onstar.com or dealer for details.)

Exterior

- Wheels, 18" x 8.5" (45.7 cm x 21.6 cm) Bright Silver painted aluminum
- Tires, 265/65R18SL all-season, blackwall (Standard with (PZX) 18" Bright Silver painted aluminum wheels only.)
- Wheel, full-size spare, 17" (43.2 cm) steel- Tire, spare P265/70R17 all-season, blackwall
- Luggage rack side rails, roof-mounted, bright
- Mirrors, outside heated power-adjustable, manual-folding, body-color
- Tire carrier, lockable outside spare, winch-type mounted under frame at rear
- Active aero shutters, upper (Standard with (L84) 5.3L EcoTec3 V8 engine only.)
- Fascia, front- Assist steps, Black with chrome accent strip - Headlamps, LED
- IntelliBeam, automatic high beam on/off- Lamps, stop and tail, LED
- Mirror caps, body-color
- Glass, deep-tinted (all windows, except light-tinted glass on windshield and driver- and front passenger-side glass)
- Glass, acoustic, laminated- Glass, windshield shade band
- Wipers, front intermittent, Rainsense- Wiper, rear intermittent with washer
- Door handles, body-color
- Liftgate, rear power programmable, hands-free with emblem projection

Safety

- Seats, front bucket- Seat trim, leather-appointed front seats
- Seats, second row 60/40 split-folding bench, manual
- Seats, third row 60/40 split-folding bench, manual
- Floor mats, color-keyed carpeted first and second row, removable
- Steering column, manual tilt and telescopic
- Steering wheel controls, mounted audio Driver Information Center, cruise control, Forward Collision Alert following gap button and heated steering wheel (when equipped)
- Door locks, power programmable with lockout protection and delayed locking
- Keyless Open includes extended range Remote Keyless Entry
- Cruise control, electronic with set and resume speed
- USB data ports 2, one type-A and one type-C, includes SD Card Reader, located within front center console (When (DCH) power-sliding center console is ordered, relocated within instrument panel.)
- USB data ports, 2, one type-A and one type-C, located within center console (Deleted when (DCH) power-sliding center console is ordered.)
- Window, power with driver Express-Up/Down
- Window, power with front passenger Express-Up/Down
- Windows, power with rear Express-Down
- Memory settings, recalls 2 "driver" presets for power driver seat
- Air conditioning, tri-zone automatic climate control with individual climate settings for driver, right front passenger and rear seat occupants
- Air conditioning, rear- Keyless start, push button

- Seat adjusters, 10-way power includes 8-way power driver and front passenger seats with 2-way power lumbar
- Seats, heated driver and front passenger
- Console, floor with storage area and removable storage tray
- Floor covering, color-keyed carpeting- Electronic Precision Shift
- Steering wheel, leather-wrapped
- Driver Information Center, 4.2" diagonal color display includes driver personalization
- Rear Seat Reminder- Remote start
- Universal Home Remote includes garage door opener, programmable
- Theft-deterrent system, electrical, unauthorized entry
- Wireless charging (Standard on vehicles built before 7-12-2021. Vehicles built on or after 7-12-2021, will have (00C) Not Equipped with Wireless Charging which removes Wireless Charging and its content. See dealer for details. The system wirelessly charges one compatible mobile device. Some phones have built-in wireless charging technology and others require a special adaptor/back cover. To check for phone or other device compatibility, see my.chevrolet.com/learnAbout/wireless-charging or consult your carrier.)
- USB charging-only ports, 4, (2) located on rear of center console and (2) in 3rd row
- Defogger, rear-window electric
- Power outlets, 2, 120-volt, located on the rear of the center console and rear cargo area
- Power outlet, front auxiliary, 12-volt, located in the center stack of instrument panel
- Sill plates, bright, front and rear door - Mirror, inside rearview auto-dimming
- Visors, driver and front passenger illuminated vanity mirrors, sliding
- Assist handles, overhead, driver and front passenger, located in headliner
- Assist handles, front passenger A-pillar and second row outboard B-pillar
- Lighting, interior with dome light, driver- and passenger-side door switch with delayed entry feature, cargo lights, door handle or Remote Keyless Entry-activated illuminated entry and map lights in front and second seat positions
- Cargo management system
- Chevrolet Connected Access capable (Subject to terms. See onstar.com or dealer for details.)

Mechanical

- Transmission, 10-speed automatic electronically controlled with overdrive, includes Traction Select System including tow/haul (Most vehicles built on or after 6-7-2021 with a V8 engine will have (NSS) Not Equipped with Automatic Stop/Start, which removes Automatic Stop/Start, Engine control stop/start disable button and its content.)
- Fuel, gasoline, E15 (Standard with (L84) 5.3L EcoTec3 V8 engine only.)
- Engine, 5.3L EcoTec3 V8 with Dynamic Fuel Management, Direct Injection and Variable Valve Timing, includes aluminum block construction (355 hp [265 kW] @ 5600 rpm, 383 lb-ft of torque [518 Nm] @ 4100 rpm)
- Rear axle, 3.23 ratio- Suspension Package, Premium Smooth Ride
- GVWR, 7500 lbs. (3402 kg) (2WD models only with (L84) 5.3L EcoTec3 V8 engine.)
- Automatic Stop/Start (Standard on vehicles built before 6-7-2021. Most vehicles built on or after 6-7-2021 equipped with a V8 engine will have (NSS) Not Equipped with Automatic Stop/Start, which removes Automatic Stop/Start, Engine control stop/start disable button and its content. See dealer for details.)
- Engine control, stop/start system disable button, non-latching (Standard on vehicles built before 6-7-2021. Most vehicles built on or after 6-7-2021 equipped with a V8 engine will have (NSS) Not Equipped with Automatic Stop/Start, which removes Automatic Stop/Start, Engine control stop/start disable button and its content. See dealer for details.)
- Engine air filtration monitor- Differential, mechanical limited-slip- Rear wheel drive
- Cooling, external engine oil cooler, heavy-duty air-to-oil integral to driver side of radiator (Deleted when (LM2) Duramax 3.0L Turbo-Diesel I6 engine is ordered.)
- Cooling, auxiliary transmission oil cooler, heavy-duty air-to-oil
- Battery, 800 cold-cranking amps with 80 amp hour rating (Standard with (L84) 5.3L EcoTec3 V8 engine only.)
- Alternator, 220 amps (Standard with (L84) 5.3L EcoTec3 V8 engine only.)
- Trailing equipment includes trailering hitch platform, 7-wire harness with independent fused trailering circuits mated to a 7-way connector and 2" trailering receiver
- Trailer sway control- Hitch Guidance- Suspension, front coil-over-shock with stabilizer bar
- Suspension, rear multi-link with coil springs- Steering, power
- Brakes, 4-wheel antilock, 4-wheel disc with DURALIFE rotors
- Exhaust, single system, single-outlet- Mechanical Jack with tools

Parks Chevrolet, Inc.

parksdeals.com

833-825-2763

615 NC-66 South

Kernersville, NC 27284

© 2024 AutoRevo - All rights reserved. - Powered by AutoRevo