



2019 Chevrolet Traverse LS

Our Price \$34,506

View this vehicle on our website at parksdeals.com

Parks Chevrolet, Inc.

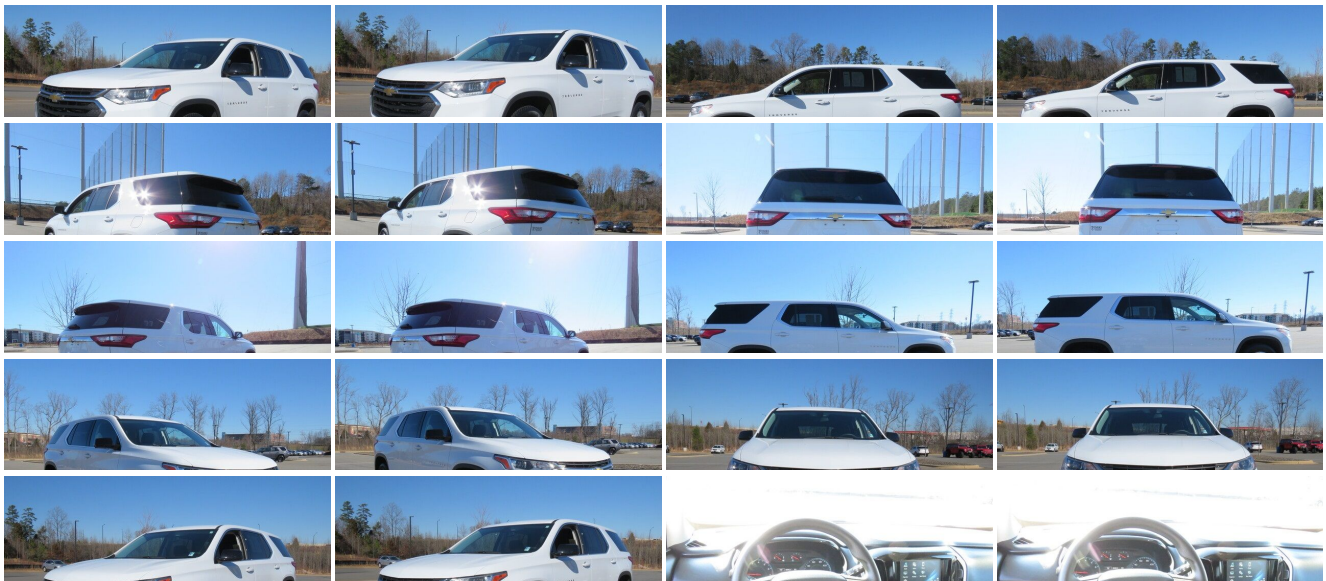
[833-825-2763](tel:833-825-2763)

615 NC-66 South, Kernersville, NC 27284

[Photos](#)

[Details](#)

[Contact](#)



Specifications:

Year:	2019
VIN:	1GNERFKW9KJ258084
Make:	Chevrolet
Stock:	126332A
Model/Trim:	Traverse LS
Condition:	Pre-Owned
Body:	SUV
Exterior:	Summit White
Engine:	ENGINE, 3.6L V6, SIDI, VVT
Interior:	Jet Black Cloth
Mileage:	23,385
Drivetrain:	Front Wheel Drive
Economy:	City 18 / Highway 27

Vehicle Description

2019 Chevrolet Traverse LS Certified.

6 Speakers, Apple CarPlay/Android Auto, Front dual zone A/C, Fully automatic headlights, High-Intensity Discharge Headlights, Preferred Equipment Group 1LS, Premium Cloth Seat Trim. CARFAX One-Owner. Clean CARFAX.

Odometer is 26561 miles below market average! 18/27 City/Highway MPG

Call 704.288.0662 to check on the availability of this vehicle and schedule a private showing or shop 24 hours a day @ WWW.PARKSCHARLOTTE.COM. *All prices are plus tax, tag, title, and documentation. All vehicles are fully reconditioned by a Master ASE Factory Trained Certified Technician.

Awards:

* 2019 KBB.com 12 Best Family Cars

Installed Options

Interior

- Seats, front bucket- Seating, 8-passenger (2-3-3 seating configuration)
- Seat trim, Premium Cloth- Seats, third row 60/40 split-bench, manual-folding
- Floor mats, color-keyed all rows
- Steering wheel controls, mounted controls for audio, phone and cruise
- Door locks, power programmable with lockout protection
- Keyless Open, includes extended range Remote Keyless Entry
- Cruise control, electronic with set and resume speed - Remote panic alarm
- Theft-deterrent system, electrical, unauthorized entry
- Head restraints, front, 2-way adjustable
- Head restraints, second and third row outboard, 2-way manual-folding
- Console, front center with 2 cup holders, covered storage bin with storage and removable tray
- Floor covering, color-keyed carpeting- Steering wheel, urethane- Steering column, tilt
- Display, 3.5" driver instrument information, monochromatic- Compass display, digital
- Windows, power, with driver and front passenger Express-Down
- Air conditioning, tri-zone automatic climate control with individual climate settings for driver, right front passenger and rear seat occupants
- Sensor, humidity and windshield temperature- Defogger, rear-window electric
- Heater ducts, 2nd row- Mirror, inside rearview manual day/night
- Umbrella holders, driver and front passenger doors
- Visors, driver and passenger illuminated vanity mirrors, covered
- Lighting, interior with theater dimming, cargo compartment, reading lights for front seats, second row reading lamps integrated into dome light, door-and tailgate-activated switches and illuminated entry and exit feature
- Cup holders, 10 total- Cargo storage, tray under rear floor

Exterior

- Wheels, 18" (45.7 cm) Bright Silver painted aluminum

Option Packages

Factory Installed Packages

ENGINE, 3.6L V6, SIDI, VVT
(310 hp [232.0 kW] @ 6800 rpm, 266 lb-ft of
torque [361 N-m] @ 2800 rpm)

- Tires, P255/65R18 all-season blackwall- Wheel, spare, 18" (45.7 cm) steel
- Tire, compact spare, T135/70R18, blackwall- Active aero shutters, upper and lower
- Moldings, Black bodyside- Moldings, rocker, Black
- Headlamps, high intensity discharge- Headlamps, automatic on/off- Taillamps, LED
- Mirror caps, Black painted
- Mirrors, outside heated power-adjustable, Black, manual-folding- Glass, deep-tinted
- Wipers, front intermittent with washers- Wiper, rear intermittent with washer
- Door handles, body-color- Liftgate, rear manual

Safety

- Seats, front bucket- Seating, 8-passenger (2-3-3 seating configuration)
- Seat trim, Premium Cloth- Seats, third row 60/40 split-bench, manual-folding
- Floor mats, color-keyed all rows
- Steering wheel controls, mounted controls for audio, phone and cruise
- Door locks, power programmable with lockout protection
- Keyless Open, includes extended range Remote Keyless Entry
- Cruise control, electronic with set and resume speed - Remote panic alarm
- Theft-deterrent system, electrical, unauthorized entry
- Head restraints, front, 2-way adjustable
- Head restraints, second and third row outboard, 2-way manual-folding
- Console, front center with 2 cup holders, covered storage bin with storage and removable tray
- Floor covering, color-keyed carpeting- Steering wheel, urethane- Steering column, tilt
- Display, 3.5" driver instrument information, monochromatic- Compass display, digital
- Windows, power, with driver and front passenger Express-Down
- Air conditioning, tri-zone automatic climate control with individual climate settings for driver, right front passenger and rear seat occupants
- Sensor, humidity and windshield temperature- Defogger, rear-window electric
- Heater ducts, 2nd row- Mirror, inside rearview manual day/night
- Umbrella holders, driver and front passenger doors
- Visors, driver and passenger illuminated vanity mirrors, covered
- Lighting, interior with theater dimming, cargo compartment, reading lights for front seats, second row reading lamps integrated into dome light, door-and tailgate-activated switches and illuminated entry and exit feature
- Cup holders, 10 total- Cargo storage, tray under rear floor

Mechanical

- Transmission, 9-speed automatic
- Engine, 3.6L V6, SIDI, VVT (310 hp [232.0 kW] @ 6800 rpm, 266 lb-ft of torque [361 N-m] @ 2800 rpm)
- E10 Fuel capable- Engine control, stop-start system- Traction Mode Select
- Axle, 3.49 final drive ratio- Front wheel drive
- Battery, heavy-duty 600 cold-cranking amps- Alternator, 170 amps
- GVWR, 6160 lbs. (2800 kg)- Suspension, Ride and Handling
- Brakes, 4-wheel antilock, 4-wheel disc, 17" front and rear- Electric Parking Brake
- Capless fuel fill- Tool kit, road emergency

Parks Chevrolet, Inc.

Parks Chevrolet, Inc.

View this car on our website at parksdeals.com/7055131

Website: parksdeals.com

Phone: 833-825-2763

Map: 615 NC-66 South, Kernersville, NC 27284

