

parksdeals.com
833-825-2763
615 NC-66 South
Kernersville, NC
27284

Parks Chevrolet,
Inc.

2022 Chevrolet Traverse LT Cloth

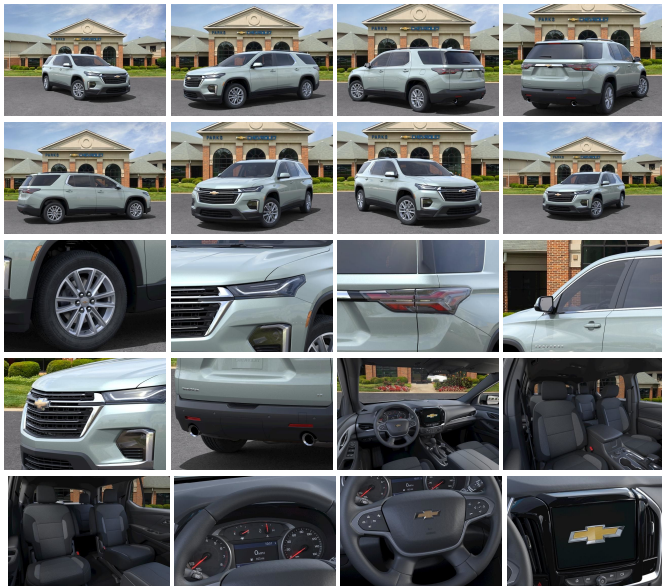
View this car on our website at parksdeals.com/7054018/ebrochure



Our Price **\$37,130**

Specifications:

Year: 2022
VIN: 1GNERGKW4NJ130801
Make: Chevrolet
Stock: 130801
Model/Trim: Traverse LT Cloth
Condition: New
Body: SUV
Exterior: Silver Ice Metallic
Engine: ENGINE, 3.6L V6, SIDI, VVT
Interior: Jet Blk Premium Clth Cloth
Mileage: 0
Drivetrain: Front Wheel Drive
Economy: City 18 / Highway 27



2022 Chevrolet Traverse LT Silver Sage Metallic 3.6L V6 SIDI VVT 9-Speed Automatic

4.2" Multi-Color Enhanced Driver Instrument Display, 4-Wheel Disc Brakes, 6-Speaker Audio System Feature, 8-Way Power Driver Seat Adjuster, ABS brakes, Air Conditioning, Alloy wheels, Automatic temperature control, Convenience & Driver Confidence Package, Dual front impact airbags, Dual front side impact airbags, Emergency communication system: OnStar Guidance, Front anti-roll bar, Front dual zone A/C, Front License Plate Bracket Mounting Package, Heated Driver & Front Passenger Seats, Low tire pressure warning, Occupant sensing airbag, Overhead airbag, Panic alarm, Power driver seat, Power steering, Power windows, Preferred Equipment Group 1LT, Radio: Chevrolet Infotainment 3 Plus System, Radio: Chevrolet Infotainment System AM/FM Stereo, Rear air conditioning, Rear anti-roll bar, Rear Park Assist w/Audible Warning, Rear Power Liftgate, Rear window defroster, Remote keyless entry, Remote Start, Security system, SiriusXM Radio, SiriusXM w/360L, Steering wheel mounted audio controls, Universal Home Remote, Variably intermittent wipers, We Deliver. 18/27 City/Highway MPG \$1000 - Dealer Trade-in Allowance (Must own and trade a 2015 or newer passenger vehicle to qualify for the Dealer Trade-in Allowance), Allowance is \$1000 above True Car Cash Offer. This offer is based on the current condition of the vehicle and must be appraised at the Dealership to receive the Trade-In Allowance. \$1000 is reflected in the vehicle discount. \$1000 - Dealer Finance Discount (Must qualify and finance with GM Financial, not available with special financing rates or programs.) You may or may not qualify for all rebates. Price does not include tax, tag, and fees. Price does not include any aftermarket products, bodies, or upfits. Price includes applicable rebates:

Contact us online at www.parkschevrolethuntersville.com or give us a call at (704) 209-9961 to have your questions answered, obtain a price quote for this vehicle, or schedule your test drive today. Our prices cannot be beat! Come visit us at 15235 STATESVILLE ROAD HUNTERSVILLE NC.

Vehicle History Report : as Of 04/23/2024

CARFAX

Snapshot

2022 CHEVROLET TRAVERSE LT CLOTH



No accidents or damage reported to CARFAX



2 Service history records



CARFAX 1-Owner vehicle



Personal vehicle



8 Detailed records available



7,182 Last reported odometer reading



FREE CARFAX Report

See the full CARFAX Report for additional information

*carfax Snapshot is a reflection of available information on the date the report was pulled. carfax is constantly being updated with new information and is subject to change at any time.

Our Location :



2022 Chevrolet Traverse LT Cloth

Parks Chevrolet, Inc. - 833-825-2763 - View this car on our website at parksdeals.com/7054018/ebrochure

Installed Options

Interior

- Seats, front bucket- Seating, 7-passenger (2-2-3 seating configuration)
- Seat trim, premium cloth- Seat adjuster, driver 8-way power
- Seat adjuster, power driver lumbar control
- Seats, third row 60/40 split-bench, manual-folding
- Floor mats, color-keyed all rows (Deleted when LPO floor mats or LPO floor liners are ordered.)
- Steering wheel controls, mounted controls for audio, phone and cruise
- Door locks, power programmable with lockout protection
- Keyless Open includes extended range Remote Keyless Entry with lock/unlock feature
- Cruise control, electronic with set and resume speed - Remote panic alarm
- Theft-deterrent system, electrical, unauthorized entry
- Seat adjuster, front passenger 4-way manual- Head restraints, front, 2-way adjustable
- Head restraints, second and third row outboard, 2-way manual-folding
- Console, front center with 2 cup holders, covered storage bin with storage and removable tray
- Steering wheel, leather-wrapped, 3-spoke- Steering column, tilt
- Display, 3.5" driver instrument information, monochromatic (FWD model only.)
- Compass display, digital

Option Packages

Factory Installed Packages

ENGINE, 3.6L V6, SIDI, VVT
(310 hp [232.0 kW] @ 6800 rpm, 266 lb-ft of torque [361 N-m] @ 2800 rpm)

- Windows, power with driver Express Up/Down and front passenger Express-Down
- Keyless Start- Vehicle health management- Wireless Phone Charging
- USB ports 2 first row, 2 second row, 2 third row
- Air conditioning, tri-zone automatic climate control with individual climate settings for driver, right front passenger and rear seat occupants
- Sensor, humidity and windshield temperature- Defogger, rear-window electric
- Heater ducts, 2nd row- Cup holders, 10 total
- Umbrella holders, driver and front passenger doors
- Mirror, inside rearview manual day/night
- Visors, driver and passenger illuminated vanity mirrors, covered
- Lighting, interior with theater dimming, cargo compartment, reading lights for front seats, second row reading lamps integrated into dome light, door-and tailgate-activated switches and illuminated entry and exit feature
- Cargo storage, bin under rear floor
- Chevrolet Connected Access capable (Subject to terms. See onstar.com or dealer for details.)

Exterior

- Wheels, 18-inch (45.7 cm) Bright Silver-painted aluminum
- Tires, P255/65R18 all-season blackwall- IntelliBeam, auto high beam control
- Wheel, spare, 18" (45.7 cm) steel- Tire, compact spare, T135/70R18, blackwall
- Roof rails, Black- Active Aero Shutters, upper and lower- Moldings, Black bodyside
- Headlamps, LED- Headlamps, automatic on/off- Taillamps, LED- Mirror caps, body-color
- Mirrors, outside heated, power-adjustable manual-folding, body-color, with turn signal indicators
- Glass, deep-tinted- Wipers, front intermittent with washers
- Wiper, rear intermittent with washer- Door handles, body-color
- Liftgate, rear manual (FWD model only.)

Safety

- Seats, front bucket- Seating, 7-passenger (2-2-3 seating configuration)
- Seat trim, premium cloth- Seat adjuster, driver 8-way power
- Seat adjuster, power driver lumbar control
- Seats, third row 60/40 split-bench, manual-folding
- Floor mats, color-keyed all rows (Deleted when LPO floor mats or LPO floor liners are ordered.)
- Steering wheel controls, mounted controls for audio, phone and cruise
- Door locks, power programmable with lockout protection
- Keyless Open includes extended range Remote Keyless Entry with lock/unlock feature
- Cruise control, electronic with set and resume speed - Remote panic alarm
- Theft-deterrent system, electrical, unauthorized entry
- Seat adjuster, front passenger 4-way manual- Head restraints, front, 2-way adjustable
- Head restraints, second and third row outboard, 2-way manual-folding
- Console, front center with 2 cup holders, covered storage bin with storage and removable tray
- Steering wheel, leather-wrapped, 3-spoke- Steering column, tilt
- Display, 3.5" driver instrument information, monochromatic (FWD model only.)
- Compass display, digital
- Windows, power with driver Express Up/Down and front passenger Express-Down
- Keyless Start- Vehicle health management- Wireless Phone Charging
- USB ports 2 first row, 2 second row, 2 third row
- Air conditioning, tri-zone automatic climate control with individual climate settings for driver, right front passenger and rear seat occupants
- Sensor, humidity and windshield temperature- Defogger, rear-window electric
- Heater ducts, 2nd row- Cup holders, 10 total
- Umbrella holders, driver and front passenger doors
- Mirror, inside rearview manual day/night
- Visors, driver and passenger illuminated vanity mirrors, covered
- Lighting, interior with theater dimming, cargo compartment, reading lights for front seats, second row reading lamps integrated into dome light, door-and tailgate-activated switches and illuminated entry and exit feature
- Cargo storage, bin under rear floor
- Chevrolet Connected Access capable (Subject to terms. See onstar.com or dealer for details.)

Mechanical

- Transmission, 9-speed automatic
- Engine, 3.6L V6, SIDI, VVT (310 hp [232.0 kW] @ 6800 rpm, 266 lb-ft of torque [361 N-m] @ 2800 rpm)
- E10 Fuel capable- Engine control, stop-start system
- Engine control, stop-start system override- Driver Mode Selector
- Axle, 3.49 final drive ratio- Front wheel drive

- Battery, heavy-duty 600 cold-cranking amps- Alternator, 170 amps
- GVWR, 6160 lbs. (2800 kg)- Suspension, Ride and Handling- Steering, power
- Brakes, 4-wheel antilock, 4-wheel disc, 17" front and rear- Electric Parking Brake
- Capless fuel fill- Exhaust, dual-outlet with circular bright tips- Tool kit, road emergency

Parks Chevrolet, Inc.

parksdeals.com

833-825-2763

615 NC-66 South

Kernersville, NC 27284

© 2024 AutoRevo - All rights reserved. - Powered by [AutoRevo](#)