



2015 Nissan Pathfinder S

Eric Zuwalick

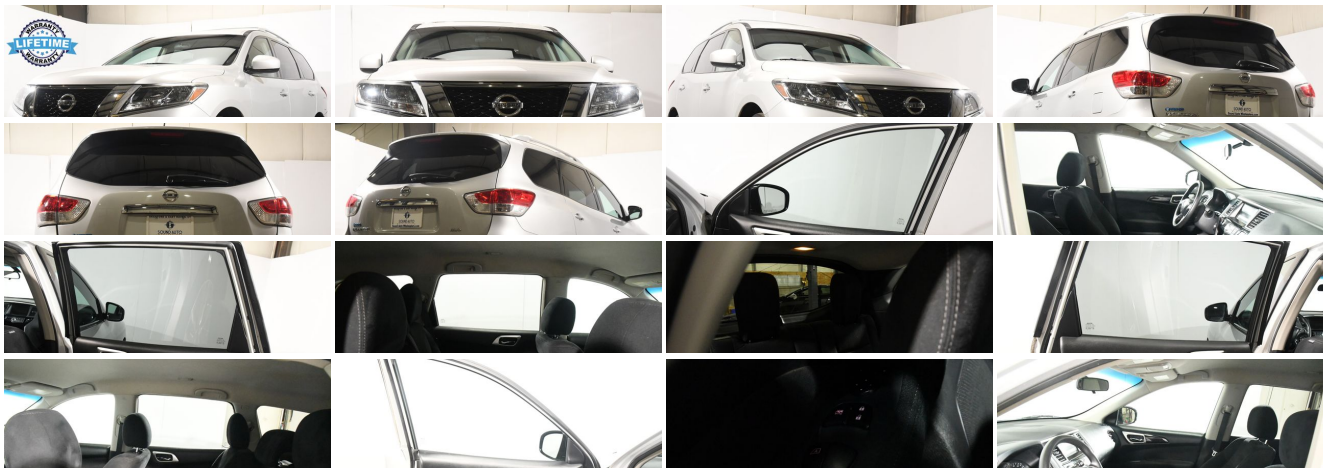
No-Haggle Price \$0

View this vehicle on our website at soundautowholesalers.com



139 W Main St, Branford, CT 06405

Photos
Details
Contact





Specifications:

Year:	2015
VIN:	5N1AR2MM5FC667295
Make:	Nissan
Stock:	4844
Model/Trim:	Pathfinder S
Condition:	Pre-Owned
Body:	SUV
Exterior:	Brilliant Silver
Engine:	Engine: 3.5L V6
Interior:	Charcoal Cloth
Mileage:	53,451
Drivetrain:	4 Wheel Drive
Economy:	City 19 / Highway 26

Vehicle Description

FREE LIFETIME POWERTRAIN WARRANTY with no deductible or mileage limit. (See Website for Complete Details - not available on Range Rover, Porsche, Tesla or other electric vehicles or vehicles with over 100,000 miles at time of sale.). We are A PLUS RATED by the Better Business Bureau - HIGHEST RATING POSSIBLE. Every vehicle is VALUE PRICED & SOUND AUTO CERTIFIED. CLICK ON THE {CARVANA? CARMAX?} TAB TO SEE HOW WE PROVIDE MORE VALUE AND CONVENIENCE THAN THE NATIONAL COMPETITORS.

Installed Options

Interior

- Dual Zone Front Automatic Air Conditioning
- Fixed Bench 3rd Row Seat Front and 2 Fixed Head Restraints
- Front Bucket Seats -inc: 7 passenger seating capacity, 6-way manual driver's seat and manual lumbar support, 4-way manual front passenger seat, 2nd row 60/40 split w/manual slide/recline/fold flat and 3rd row 50/50 split w/manual recline/fold flat
- Gauges -inc: Speedometer, Odometer, Engine Coolant Temp, Tachometer, Trip Odometer and Trip Computer
- Power 1st Row Windows w/Driver 1-Touch Down
- Power Door Locks w/Autolock Feature
- Power Rear Windows and Fixed 3rd Row Windows- Rear HVAC w/Separate Controls
- Remote Keyless Entry w/Integrated Key Transmitter, Illuminated Entry, Illuminated Ignition Switch and Panic Button
- Trip Computer- 2 12V DC Power Outlets- 2 Seatback Storage Pockets- Air Filtration
- Analog Appearance- Cargo Area Concealed Storage- Cargo Space Lights
- Carpet Floor Trim- Cloth Door Trim Insert- Cloth Seat Trim
- Cruise Control w/Steering Wheel Controls- Day-Night Rearview Mirror
- Delayed Accessory Power- Driver / Passenger And Rear Door Bins
- Driver And Passenger Visor Vanity Mirrors w/Driver And Passenger Auxiliary Mirror
- Driver Foot Rest- Driver Seat- Engine Immobilizer- FOB Controls -inc: Windows
- Fade-To-Off Interior Lighting
- Front Center Armrest w/Storage and Rear Center Armrest w/Storage- Front Cupholder
- Front Facing Rear Seat- Front Map Lights- Full Carpet Floor Covering
- Full Cloth Headliner
- Full Floor Console w/Covered Storage, Mini Overhead Console w/Storage and 2 12V DC Power Outlets
- HVAC -inc: Underseat Ducts, Headliner/Pillar Ducts and Console Ducts
- Illuminated Locking Glove Box
- Interior Trim -inc: Metal-Look Instrument Panel Insert, Metal-Look Door Panel Insert, Metal-Look Console Insert and Chrome/Metal-Look Interior Accents
- Manual Adjustable Front Head Restraints and Manual Adjustable Rear Head Restraints
- Manual Tilt/Telescoping Steering Column- Outside Temp Gauge- Passenger Seat
- Perimeter Alarm- Rear Cupholder- Seats w/Cloth Back Material
- Urethane Gear Shifter Material- Valet Function

Option Packages

Factory Installed Packages

BRILLIANT SILVER

CHARCOAL, CLOTH SEAT TRIM

Exterior

- Tailgate/Rear Door Lock Included w/Power Door Locks
- Aero-Composite Halogen Headlamps- Black Bodyside Cladding
- Black Grille w/Chrome Surround
- Black Side Windows Trim and Black Front Windshield Trim
- Body-Colored Front Bumper- Body-Colored Power Side Mirrors w/Manual Folding
- Body-Colored Rear Bumper w/Black Rub Strip/Fascia Accent and Chrome Bumper Insert
- Chrome Door Handles- Clearcoat Paint
- Compact Spare Tire Stored Underbody w/Crankdown- Deep Tinted Glass
- Fixed Rear Window w/Fixed Interval Wiper and Defroster
- Front Windshield -inc: Sun Visor Strip- Fully Galvanized Steel Panels
- Liftgate Rear Cargo Access- Lip Spoiler- Roof Rack Rails Only- Steel Spare Wheel
- Tires: P235/65R18- Variable Intermittent Wipers- Wheels: 18" Alloy

Safety

- Dual Zone Front Automatic Air Conditioning
- Fixed Bench 3rd Row Seat Front and 2 Fixed Head Restraints
- Front Bucket Seats -inc: 7 passenger seating capacity, 6-way manual driver's seat and manual lumbar support, 4-way manual front passenger seat, 2nd row 60/40 split w/manual slide/recline/fold flat and 3rd row 50/50 split w/manual recline/fold flat
- Gauges -inc: Speedometer, Odometer, Engine Coolant Temp, Tachometer, Trip Odometer and Trip Computer
- Power 1st Row Windows w/Driver 1-Touch Down
- Power Door Locks w/Autolock Feature
- Power Rear Windows and Fixed 3rd Row Windows- Rear HVAC w/Separate Controls
- Remote Keyless Entry w/Integrated Key Transmitter, Illuminated Entry, Illuminated Ignition Switch and Panic Button
- Trip Computer- 2 12V DC Power Outlets- 2 Seatback Storage Pockets- Air Filtration
- Analog Appearance- Cargo Area Concealed Storage- Cargo Space Lights
- Carpet Floor Trim- Cloth Door Trim Insert- Cloth Seat Trim
- Cruise Control w/Steering Wheel Controls- Day-Night Rearview Mirror
- Delayed Accessory Power- Driver / Passenger And Rear Door Bins
- Driver And Passenger Visor Vanity Mirrors w/Driver And Passenger Auxiliary Mirror
- Driver Foot Rest- Driver Seat- Engine Immobilizer- FOB Controls -inc: Windows
- Fade-To-Off Interior Lighting
- Front Center Armrest w/Storage and Rear Center Armrest w/Storage- Front Cupholder
- Front Facing Rear Seat- Front Map Lights- Full Carpet Floor Covering
- Full Cloth Headliner
- Full Floor Console w/Covered Storage, Mini Overhead Console w/Storage and 2 12V DC Power Outlets
- HVAC -inc: Underseat Ducts, Headliner/Pillar Ducts and Console Ducts
- Illuminated Locking Glove Box
- Interior Trim -inc: Metal-Look Instrument Panel Insert, Metal-Look Door Panel Insert, Metal-Look Console Insert and Chrome/Metal-Look Interior Accents
- Manual Adjustable Front Head Restraints and Manual Adjustable Rear Head Restraints
- Manual Tilt/Telescoping Steering Column- Outside Temp Gauge- Passenger Seat
- Perimeter Alarm- Rear Cupholder- Seats w/Cloth Back Material
- Urethane Gear Shifter Material- Valet Function

Mechanical

- 150 Amp Alternator- 19.5 Gal. Fuel Tank
- 4-Wheel Disc Brakes w/4-Wheel ABS, Front And Rear Vented Discs, Brake Assist and Hill Hold Control
- 5.577 Axle Ratio- 82-Amp/Hr Maintenance-Free Battery w/Run Down Protection
- Auto Locking Hubs- Brake Actuated Limited Slip Differential
- Electro-Hydraulic Power Assist Speed-Sensing Steering- Electronic Transfer Case
- Engine: 3.5L V6- Front And Rear Anti-Roll Bars- GVWR: 5,986 lbs.
- Gas-Pressurized Shock Absorbers- Multi-Link Rear Suspension w/Coil Springs
- Part And Full-Time Four-Wheel Drive- Single Stainless Steel Exhaust
- Strut Front Suspension w/Coil Springs- Transmission w/Driver Selectable Mode
- Transmission: Xtronic CVT (Continuously Variable)

Prices do not include sales tax, registration fees and dealer conveyance fee of 799. If you have a trade-in your sales tax will be reduced based on the difference between the car you are purchasing and your trade-in. Final credit decisions are made by lenders. The advertised price is the price for this vehicle in its current condition. Any alterations, upgrades, installations, cosmetic work, or any other additions requested by the customer would incur an additional cost, to be added to the selling price of the vehicle. The price does not include sales tax, vehicle registration charges, cost of additional requests by the customer, finance charges, processing charges, or any other charges required by law. The dealer reserves the right to pass all vehicles through Connecticut State inspection prior to delivery. The dealer attempts to update this inventory on a regular basis, however, there can be a delay between the sale of a vehicle and the update of the dealer's online inventory. Advertised price does not include sales tax, vehicle registration charges, cost of additional

requests by the customer, finance charges, processing charges, or any other charges required by law. Vehicles are sold cosmetically as is and equipped as is. Costs incurred by Sound Auto Wholesalers as a result of customer requests are not included in advertised prices. Customer must present a signed copy of this ad at the time of purchase. Online pricing excludes all prior offers, and may not be combined with any other offers, coupons, or discounts. Vehicle options and pricing are subject to change. Special price includes all dealer rebates and incentives. Finance promotions based on tier 1 credit approval after 20% down payment. All online prices expire at 12:01 PM today. Sound Auto Wholesalers will honor expired advertised prices up to 24 hours after expiration, provided the customer presents a signed, printed copy of the advertised price at the start of their visit. We make every effort to adequately represent the condition and features of all our inventory including vehicle information, pictures, pricing, and status but there may be inaccuracies. Sound Auto Wholesalers assumes no responsibility for inaccuracies in online information nor is it responsible for errors in any third-party advertisements. Please confirm any questions or concerns by contacting Sound Auto Wholesalers directly. EPA mileage estimates are based on model year EPA mileage ratings and are for comparison purposes only. Your actual mileage will vary depending on how you drive and maintain your vehicle. Before purchasing this vehicle, it is solely the customer's responsibility to address any and all differences between the information on this website and the actual vehicle specifications and/or warranties offered prior to the sale of this vehicle. Vehicle data on this website is compiled from publicly available sources believed by the publisher to be reliable. Vehicle data is subject to change without notice. The publisher assumes no responsibility for errors and/or omissions in this data and its compilation, and makes no representations expressed or implied to any actual or prospective purchaser of the vehicle as to the condition of the vehicle, vehicle specifications, ownership, vehicle history, equipment/accessories, price, or warranties. We are A-Plus Rated by The Better Business Bureau.

Sound Auto Wholesalers

Sound Auto Wholesalers

View this car on our website at soundautowholesalers.com/7053520

Website: soundautowholesalers.com

Phone:

Map: [139 W Main St, Branford, CT 06405](#)

