

2022 Chevrolet Silverado 2500HD LT

View this car on our website at parksdeals.com/7053433/ebrochure



Our Price **\$60,510**

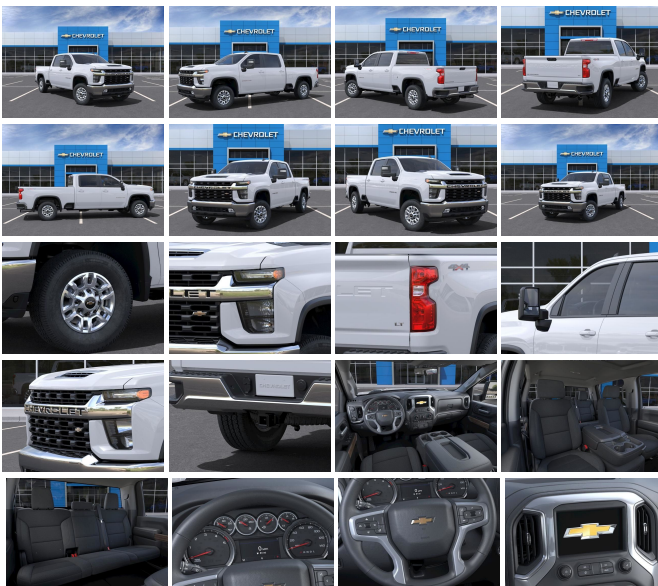
Retail Value **\$61,010**

Specifications:

Year:	2022
VIN:	2GC4YNEY1N1205277
Make:	Chevrolet
Stock:	205277
Model/Trim:	Silverado 2500HD LT
Condition:	New
Body:	Pickup Truck
Exterior:	Summit White
Engine:	ENGINE, DURAMAX 6.6L TURBO-DIESEL V8
Interior:	Jet Blk Clth Cloth
Mileage:	0
Drivetrain:	4 Wheel Drive

2022 Chevrolet Silverado 2500HD LT Summit White Duramax 6.6L V8 Turbodiesel 4WD 10-Speed Automatic

10-Speed Automatic, 4WD, Black Cloth, 10-Way Power Driver Seat Adjuster w/Lumbar, 12-Volt Rear Auxiliary Power Outlet, 2 USB Ports (1st Row), 2-Speed Electronic Shift Transfer Case, 4.2" Diagonal Color Display Driver Info Center, 4-Way Manual Driver Seat Adjuster, 4-Wheel Disc Brakes, ABS brakes, Air Conditioning, Alloy wheels, Black Mirror Caps, Bluetooth?? For Phone, Chevrolet Connected Access Capable, Chrome Front Grille, Color-Keyed Carpeting Floor Covering, Convenience Package, Deep-Tinted Glass, Dual Charge-Only USB Ports (2nd Row), Dual front impact airbags, Dual front side impact airbags, Dual-Zone Automatic Climate Control, Electric Rear-Window Defogger, Electrical Lock Control Steering Column, Electronic Cruise Control w/Set & Resume Speed, EZ Lift Power Lock & Release Tailgate, Front 40/20/40 Split-Bench Seats w/Lockable Storage, Front anti-roll bar, Front LED Fog Lamps, Front Rubberized Vinyl Floor Mats, Front wheel independent suspension, Halogen Reflector Headlamps, Heated Driver & Front Outboard Passenger Seating, Heated Steering Wheel, Heated Vertical Trailing Mirrors, Integrated Trailer Brake Controller, Keyless Open & Start, Leather-Wrapped Steering Wheel, LED Cargo Area Lighting, Low tire pressure warning, Manual Tilt & Telescoping Steering Column, Manual Tilt-Wheel Steering Column, Occupant sensing airbag, OnStar & Chevrolet Connected Services Capable, Overhead airbag, Power Door Locks, Power Front Windows w/Driver Express Up/Down, Power Front Windows w/Passenger Express Down, Power Rear Windows w/Express Down, Power steering, Power windows, Preferred Equipment Group 1LT, Rear 60/40 Folding Bench Seat (Folds Up), Rear Rubberized Vinyl Floor Mats, Rear Vision



Camera, Rear Wheelhouse Liners, Remote Keyless Entry, Remote keyless entry, Remote Vehicle Starter System, SiriusXM Radio, Standard Tailgate, Steering Wheel Audio Controls, Steering wheel mounted audio controls, Suspension Package, Unauthorized Entry Theft-Deterrent System, Urethane Steering Wheel, Wi-Fi Hotspot Capable.

Contact us online at www.parkscharlotte.com or give us a call at (704) 288-0662 to have your questions answered, obtain a price quote for this vehicle, or schedule your test drive today. Our prices cannot be beat! Come visit us at 8530 IKEA BLVD CHARLOTTE NC. Price excludes administrative, origination, documentary, procurement and/or other administrative fee. You may or may not qualify for all rebates. Price does not include tax, tag, and fees. Price does not include any aftermarket products, bodies, or upfits. Price includes applicable rebates:\$500 - Purchase Bonus Cash. Exp. 04/04/2022

2022 Chevrolet Silverado 2500HD LT

Parks Chevrolet, Inc. - 833-825-2763 - View this car on our website at parksdeals.com/7053433/ebrochure

Vehicle History Report : as Of 04/18/2024



Snapshot

2022 CHEVROLET SILVERADO K2500HD LT



No accidents or damage reported to CARFAX



11 Service history records



At least 1 open recall



CARFAX 1-Owner vehicle



Commercial vehicle



42,818 Last reported odometer reading



FREE CARFAX Report

See the full CARFAX Report for additional information

*carfax Snapshot is a reflection of available information on the date the report was pulled. carfax is constantly being updated with new information and is subject to change at any time.

Our Location :



2022 Chevrolet Silverado 2500HD LT

Parks Chevrolet, Inc. - 833-825-2763 - View this car on our website at parksdeals.com/7053433/ebrochure

Installed Options

Interior

- Seats, front 40/20/40 split-bench with upper covered armrest storage with fixed lumbar (Not available with (PCL) Convenience Package.)
- Cloth seat trim
- Seat, rear 60/40 folding bench (folds up), 3-passenger (includes child seat top tether anchor) (Requires Crew Cab or Double Cab model.)
- Floor mats, rubberized vinyl, front (Deleted when LPO floor liners are ordered. Not available with (BKF) Floor liners.)
- Floor mats, rubberized-vinyl rear (Not available with Regular Cab models. Deleted when LPO floor liners are ordered. Not available with (BKE) Floor liners.)
- Steering column, Tilt-Wheel, manual with wheel locking security feature
- Door locks, power- Remote Keyless Entry with 2 transmitters
- USB ports, 2 (first row) located on instrument panel- Power outlet, front auxiliary, 12-volt
- Air conditioning, single-zone- Seat adjuster, driver 4-way manual
- Seat adjuster, passenger 4-way manual- Floor covering, color-keyed carpeting
- Steering wheel, urethane
- Instrument cluster 6-gauge cluster featuring speedometer, fuel level, engine temperature, tachometer, voltage and oil pressure
- Driver Information Center, 4.2" diagonal color display includes driver personalization
- Exterior Temperature Display located in radio display
- Compass located in instrument cluster
- Rear Seat Reminder (Requires Crew Cab or Double Cab model.)
- Window, power front, drivers express up/down
- Window, power front, passenger express down
- Windows, power rear, express down (Not available with Regular Cab models.)
- Cruise control, electronic with set and resume speed, steering wheel-mounted
- Air vents, rear, heating/cooling (Not available on Regular Cab models.)
- Mirror, inside rearview, manual tilt
- Assist handles front A-pillar mounted for driver and passenger, rear B-pillar mounted
- Chevrolet Connected Access capable (Subject to terms. See onstar.com or dealer for details.)

Exterior

- Wheels, 17" (43.2 cm) machined aluminum- Tires, LT245/75R17E all-season, blackwall
- Tire, spare LT245/75R17E all-season, blackwall (Included and only available with (QH) LT245/75R17E all-season, blackwall tires with (E63) Durabed, pickup bed. Available to order when (ZW9) pickup bed delete and (QH) LT245/75R17E all-season, blackwall tires are ordered.)
- Headlamps, halogen reflector with halogen Daytime Running Lamps
- Mirrors, outside power-adjustable vertical trailering with heated upper glass, lower convex mirrors, integrated turn signals, manual folding/extending (extends 3.31" [84.25mm])
- Tire carrier lock keyed cylinder lock that utilizes same key as ignition and door (Deleted with (ZW9) pickup bed delete.)
- Bumper, front chrome- Bumper, rear chrome- CornerStep, rear bumper
- BedStep, Black integrated on forward portion of bed on driver and passenger side (Deleted when (ZW9) pickup bed delete is ordered.)
- Moldings, beltline, Black
- Cargo tie downs (12), fixed rated at 500 lbs per corner (Deleted with (ZW9) pickup bed delete.)
- Grille (Chrome front grille bar with "CHEVROLET". Includes molded in color Black grille inserts with small Gold bowtie emblem.)
- Taillamps with incandescent tail, stop and reverse lights
- Lamps, cargo area, cab mounted integrated with center high mount stop lamp, with switch in bank on left side of steering wheel
- Mirror caps, Black- Glass, deep-tinted
- Tailgate, standard (Deleted with (ZW9) pickup bed delete.)
- Tailgate and bed rail protection cap, top
- Tailgate, gate function manual with EZ Lift includes power lock and release (Deleted when (ZW9) pickup bed delete is ordered.)
- Door handles, body-color

Safety

- Seats, front 40/20/40 split-bench with upper covered armrest storage with fixed lumbar (Not available with (PCL) Convenience Package.)
- Cloth seat trim
- Seat, rear 60/40 folding bench (folds up), 3-passenger (includes child seat top tether anchor) (Requires Crew Cab or Double Cab model.)
- Floor mats, rubberized vinyl, front (Deleted when LPO floor liners are ordered. Not available with (BKF) Floor liners.)
- Floor mats, rubberized-vinyl rear (Not available with Regular Cab models. Deleted when LPO floor liners are ordered. Not available with (BKE) Floor liners.)
- Steering column, Tilt-Wheel, manual with wheel locking security feature

Option Packages

Factory Installed Packages

ENGINE, DURAMAX 6.6L TURBO-DIESEL V8 B20-Diesel compatible, (445 hp [332 kW] @ 2800 rpm, 910 lb-ft of torque [1220 Nm] @ 1600 rpm)	\$9,890
---	---------

Option Packages Total	\$9,890
-----------------------	---------

- Door locks, power- Remote Keyless Entry with 2 transmitters
- USB ports, 2 (first row) located on instrument panel- Power outlet, front auxiliary, 12-volt
- Air conditioning, single-zone- Seat adjuster, driver 4-way manual
- Seat adjuster, passenger 4-way manual- Floor covering, color-keyed carpeting
- Steering wheel, urethane
- Instrument cluster 6-gauge cluster featuring speedometer, fuel level, engine temperature, tachometer, voltage and oil pressure
- Driver Information Center, 4.2" diagonal color display includes driver personalization
- Exterior Temperature Display located in radio display
- Compass located in instrument cluster
- Rear Seat Reminder (Requires Crew Cab or Double Cab model.)
- Window, power front, drivers express up/down
- Window, power front, passenger express down
- Windows, power rear, express down (Not available with Regular Cab models.)
- Cruise control, electronic with set and resume speed, steering wheel-mounted
- Air vents, rear, heating/cooling (Not available on Regular Cab models.)
- Mirror, inside rearview, manual tilt
- Assist handles front A-pillar mounted for driver and passenger, rear B-pillar mounted
- Chevrolet Connected Access capable (Subject to terms. See onstar.com or dealer for details.)

Mechanical

- Engine, 6.6L V8 with Direct Injection and Variable Valve Timing, gasoline, (401 hp [299 kW] @ 5200 rpm, 464 lb-ft of torque [629 N-m] @ 4000 rpm)
- Transmission, 6-speed automatic, heavy-duty (Requires (L8T) 6.6L V8 gas engine.)
- Recovery hooks, front, frame-mounted, Black (Not available with (VLQ) Chrome recovery hooks.)
- Rear axle, 3.73 ratio (Requires (L8T) 6.6L V8 gas engine. Not available with (L5P) Duramax 6.6L Turbo-Diesel V8 engine.)
- Durabed, pickup bed
- GVWR, 10,450 lbs. (4740 kg) (Included and only available with CK20743 model and (L8T) 6.6L V8 gas engine with 17" wheels or CK20903 model and (L8T) 6.6L V8 gas engine with 18" or 20" wheels.)
- Air filter, heavy-duty- Air filtration monitoring
- Transfer case, two-speed electronic shift with push button controls (Requires 4WD models.)
- Auto-locking rear differential- Four wheel drive- Cooling, external engine oil cooler
- Cooling, auxiliary external transmission oil cooler
- Battery, heavy-duty 720 cold-cranking amps/80 Amp-hr maintenance-free with rundown protection and retained accessory power (Included and only available with (L8T) 6.6L V8 gas engine.)
- Alternator, 170 amps (Requires (L8T) 6.6L V8 gas engine.)
- Trailer brake controller, integrated
- Frame, fully-boxed, hydroformed front section and a fully-boxed stamped rear section
- Suspension Package- Steering, Recirculating Ball with smart flow power steering system
- Brakes, 4-wheel antilock, 4-wheel disc with DURALIFE rotors- Brake lining wear indicator
- Capless Fuel Fill (Requires (L8T) 6.6L V8 gas engine. Not available with (ZW9) pickup bed delete.)

Parks Chevrolet, Inc.

parksdeals.com

833-825-2763

615 NC-66 South

Kernersville, NC 27284

© 2024 AutoRevo - All rights reserved. - Powered by AutoRevo