



2021 GMC Sierra 1500 Elevation

Our Price \$54,879

View this vehicle on our website at parksdeals.com

Parks Chevrolet, Inc.

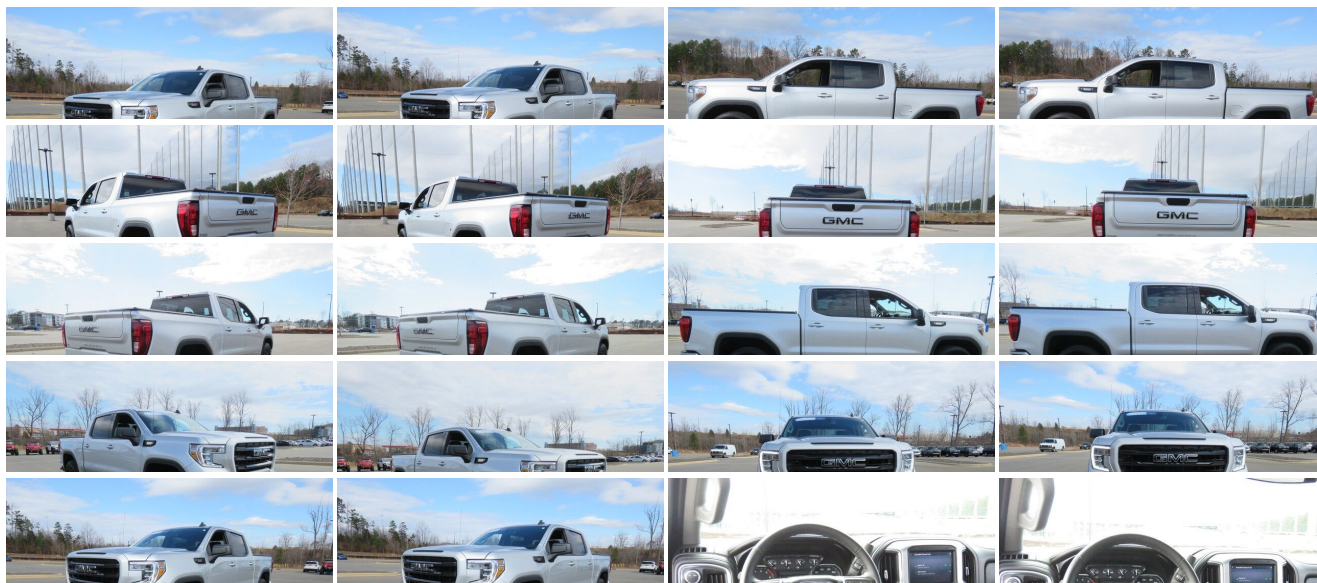
[833-825-2763](tel:833-825-2763)

615 NC-66 South, Kernersville, NC 27284

Photos

Details

Contact



Specifications:

Year:	2021
VIN:	3GTU9CET7MG389202
Make:	GMC
Stock:	7C3639
Model/Trim:	Sierra 1500 Elevation
Condition:	Pre-Owned
Body:	Pickup Truck
Exterior:	Quicksilver Metallic
Engine:	ENGINE, DURAMAX 3.0L TURBO-DIESEL I6
Interior:	Black Cloth
Mileage:	4,509
Drivetrain:	4 Wheel Drive
Economy:	City 22 / Highway 26

Vehicle Description

2021 GMC Sierra 1500 Elevation Certified.

10-Speed Automatic, 4WD, Black Cloth, 10-Way Power Driver Seat Adjuster w/Lumbar, 12-Volt Rear Auxiliary Power Outlet, 4G LTE Wi-Fi Hotspot Capable, 4-Wheel Disc Brakes, ABS brakes, Apple CarPlay/Android Auto, Auto-Locking Rear Differential, Body-Color Surround Grille, Bumpers: body-color, Cloth Rear Seat w/Storage Package, Cloth Seat Trim, Color-Keyed Carpeting Floor Covering, Compass, Deep-Tinted Glass, Dual-Zone Automatic Climate Control, Electric Rear-Window Defogger, Electrical Lock Control Steering Column, Electronic Stability Control, Elevation Convenience Package, Elevation Value Package, Front fog lights, Front Frame-Mounted Black Recovery Hooks, Front Rubberized-Vinyl Floor Mats, Fully automatic headlights, GMC Connected Access Capable, Heated door mirrors, Heated Driver & Front Outboard Passenger Seating, Heated front seats, Heated Steering Wheel, Heavy Duty Suspension, Hitch Guidance, Keyless Open & Start, LED Cargo Area Lighting, Manual Tilt-Wheel & Telescoping Steering Column, Power Door Locks, Power door mirrors, Power Front Windows w/Driver Express Up/Down, Power Front Windows w/Passenger Express Down, Power Rear Windows w/Express Down, Preferred Equipment Group 3SB, Premium audio system: GMC Infotainment System, Rear Dual USB Charging-Only Ports, Rear Wheelhouse Liners, Remote Vehicle Starter System, Steering Wheel Audio Controls, Theft Deterrent System (Unauthorized Entry), Trailing Package. CARFAX One-Owner. Clean CARFAX.

Odometer is 11699 miles below market average! 22/26 City/Highway MPG

Call 704.288.0662 to check on the availability of this vehicle and schedule a private showing or shop 24 hours a day @ WWW.PARKSCHARLOTTE.COM. *All prices are plus tax, tag, title, and documentation. All vehicles are fully reconditioned by a Master ASE Factory Trained Certified Technician.

Installed Options	Option Packages				
<div>Interior</div> <div><ul style="list-style-type: none">- Seats, front 40/20/40 split-bench with covered armrest storage and under-seat storage (lockable)- Seat adjuster, driver 10-way power including lumbar- Seating, heated driver and front outboard passenger- Floor mats, rubberized-vinyl front (Deleted when (RIA) All-weather floor liner, LPO is ordered.)- Floor mats, rubberized-vinyl rear (Deleted when (RIA) All-weather floor liner, LPO is ordered.)- Steering column, manual Tilt-Wheel and telescoping- Steering wheel, heated- Windows, power front, drivers express up/down- Window, power front, passenger express down- Windows, power rear, express down- Door locks, power- Keyless Open and Start- USB ports, 2 (first row) located on instrument panel- Power outlet, front auxiliary, 12-volt- Power outlet, rear auxiliary, 12-volt- Air conditioning, dual-zone automatic climate control (Models built before 9-6-2021 feature digital temperature displays on the Climate Control Knobs. Certain vehicles built on or after 9-6-2021 will include (00D) Not Equipped with Climate Control Knob Digital Temperature Display, which removes the digital temperatures displayed on the Climate Control Knobs. See dealer for details.)- Defogger, rear-window electric- Seat adjuster, passenger 4-way manual- Seat, Cloth Rear with Storage Package, 60/40 folding bench for Crew Cab models, includes seatback storage on left and right side, center fold out armrest with 2 cupholders, (includes child seat top tether anchor)</div>	<div>Factory Installed Packages</div> <div><table><tr><td>ENGINE, DURAMAX 3.0L TURBO-DIESEL I6 (277 hp [206.6 kW] @ 3750 rpm, 460 lb-ft of torque [623.7 N-m] @ 1500 rpm)</td><td>\$2,390</td></tr><tr><td>Option Packages Total</td><td>\$2,390</td></tr></table></div>	ENGINE, DURAMAX 3.0L TURBO-DIESEL I6 (277 hp [206.6 kW] @ 3750 rpm, 460 lb-ft of torque [623.7 N-m] @ 1500 rpm)	\$2,390	Option Packages Total	\$2,390
ENGINE, DURAMAX 3.0L TURBO-DIESEL I6 (277 hp [206.6 kW] @ 3750 rpm, 460 lb-ft of torque [623.7 N-m] @ 1500 rpm)	\$2,390				
Option Packages Total	\$2,390				

- Floor covering, color-keyed carpeting- Steering wheel, leather-wrapped
- Instrument cluster, 6-gauge cluster featuring speedometer, fuel level, engine temperature, tachometer, voltage and oil pressure
- Driver Information Center, 4.2" diagonal color display includes driver personalization
- Compass, located in instrument cluster
- Exterior Temperature Display, located in radio display - Brake lining wear indicator
- Remote vehicle starter system- Cruise control, steering wheel-mounted
- Theft-deterrent system, unauthorized entry- Steering column, lock control, electrical
- USB ports, dual, charge-only (2nd row)- Air vents, rear
- Mirror, inside rearview, manual tilt
- Assist handles front A-pillar mounted for driver and passenger, rear B-pillar mounted
- GMC Connected Access capable (Subject to terms. See onstar.com or dealer for details.)

Exterior

- Wheels, 20" x 9" (50.8 cm x 22.9 cm) Black gloss painted aluminum
- Tires, 275/60R20 all-season, blackwall
- Tire, spare 255/80R17SL all-season, blackwall (Included and only available with 20" or 22" wheels and tires.)
- Headlamps, LED reflector with incandescent turn signals and LED signature Daytime Running Lamps
- Mirrors, outside heated power-adjustable
- Wheel, 17" x 8" (43.2 cm x 20.3 cm) full-size, steel spare - Wheelhouse liners, rear
- Tire carrier lock keyed cylinder lock that utilizes same key as ignition and door
- Bumper, front, body-color lower (Front bumper color will be high gloss black.)
- Bumper, rear body-color with corner steps- CornerStep, rear bumper
- Grille (Body-color surround with high gloss Black mesh and inserts.) - Fog lamps, LED
- Taillamps, LED tail and stop light with incandescent reverse light - Glass, deep-tinted
- Lamps, cargo area, cab mounted integrated with center high mount stop lamp, with switch in bank on left side of steering wheel
- LED Cargo Area Lighting located in cargo bed activated with switch on center switch bank or key fob
- Tailgate, GMC MultiPro Tailgate with six functional load/access features
- Tailgate, gate function manual with EZ Lift includes power lock and release, includes hitch area light
- Tailgate and bed rail protection caps, top - Door handles, body-color

Safety

- Seats, front 40/20/40 split-bench with covered armrest storage and under-seat storage (lockable)
- Seat adjuster, driver 10-way power including lumbar
- Seating, heated driver and front outboard passenger
- Floor mats, rubberized-vinyl front (Deleted when (RIA) All-weather floor liner, LPO is ordered.)
- Floor mats, rubberized-vinyl rear (Deleted when (RIA) All-weather floor liner, LPO is ordered.)
- Steering column, manual Tilt-Wheel and telescoping- Steering wheel, heated
- Windows, power front, drivers express up/down
- Window, power front, passenger express down- Windows, power rear, express down
- Door locks, power- Keyless Open and Start
- USB ports, 2 (first row) located on instrument panel - Power outlet, front auxiliary, 12-volt
- Power outlet, rear auxiliary, 12-volt
- Air conditioning, dual-zone automatic climate control (Models built before 9-6-2021 feature digital temperature displays on the Climate Control Knobs. Certain vehicles built on or after 9-6-2021 will include (00D) Not Equipped with Climate Control Knob Digital Temperature Display, which removes the digital temperatures displayed on the Climate Control Knobs. See dealer for details.)
- Defogger, rear-window electric- Seat adjuster, passenger 4-way manual
- Seat, Cloth Rear with Storage Package, 60/40 folding bench for Crew Cab models, includes seatback storage on left and right side, center fold out armrest with 2 cupholders, (includes child seat top tether anchor)
- Floor covering, color-keyed carpeting- Steering wheel, leather-wrapped
- Instrument cluster, 6-gauge cluster featuring speedometer, fuel level, engine temperature, tachometer, voltage and oil pressure
- Driver Information Center, 4.2" diagonal color display includes driver personalization
- Compass, located in instrument cluster
- Exterior Temperature Display, located in radio display - Brake lining wear indicator
- Remote vehicle starter system- Cruise control, steering wheel-mounted
- Theft-deterrent system, unauthorized entry- Steering column, lock control, electrical
- USB ports, dual, charge-only (2nd row)- Air vents, rear
- Mirror, inside rearview, manual tilt
- Assist handles front A-pillar mounted for driver and passenger, rear B-pillar mounted
- GMC Connected Access capable (Subject to terms. See onstar.com or dealer for details.)

Mechanical

- Engine, 2.7L Turbo (310 hp [231 kW] @ 5600 rpm, 348 lb-ft of torque [471 Nm] @ 1500 rpm) (Includes (KW5) 220-amp alternator and (MQE) 8-speed automatic transmission. Not available with (X31) X31 Off-Road Package or (NHT) Max Trailering Package.)
- Transmission, 8-speed automatic, electronically controlled with overdrive and tow/haul mode. Includes Cruise Grade Braking and Powertrain Grade Braking (Standard on models equipped with (L84) 5.3L EcoTec3 V8 engine or (L3B) 2.7L Turbo engine. Not available with (LM2) Duramax 3.0L Turbo-Diesel I6 engine.)
- Auto-locking rear differential
- Rear axle, 3.42 ratio (Included and only available with (L3B) 2.7L Turbo engine or (NHT) Max Trailering Package.)
- Pickup bed
- GVWR, 7000 lbs. (3175 kg) (Requires Crew Cab or Double Cab 4WD model and (L3B) 2.7L Turbo engine. Requires Crew Cab 2WD model and (LM2) Duramax 3.0L Turbo-Diesel I6 engine. Requires Double Cab 4WD model with (L84) 5.3L EcoTec3 V8 engine without (NHT) Max Trailering Package.)
- Automatic Stop/Start
- Transfer case, single speed, electronic Autotrac with push button control (4WD models only)
- Four wheel drive
- Alternator, 220 amps (Included and only available with (L3B) 2.7L Turbo engine, (LM2) Duramax 3.0L Turbo-Diesel I6 engine or (NHT) Max Trailering Package.)
- Battery, heavy-duty 730 cold-cranking amps/80 Amp-hr, maintenance-free with rundown protection and retained accessory power (Included and only available with (L84) 5.3L EcoTec3 V8 engine, (L3B) 2.7L Turbo engine and (L87) 6.2L EcoTec3 V8 engine.)
- Frame, fully-boxed, hydroformed front section
- Recovery hooks, front, frame-mounted, Black
- Cargo tie downs (12), fixed, rated at 500 lbs per corner
- Steering, Electric Power Steering (EPS) assist, rack-and-pinion
- Brakes, 4-wheel antilock, 4-wheel disc with DURALIFE rotors - Capless Fuel Fill
- Exhaust, single outlet- Exhaust, aluminized stainless-steel muffler and tailpipe

Parks Chevrolet, Inc.

Parks Chevrolet, Inc.

View this car on our website at parksdeals.com/7052582

Website: parksdeals.com

Phone: [833-825-2763](tel:833-825-2763)

Map: [615 NC-66 South, Kernersville, NC 27284](#)

