

2021 Jeep Gladiator Sport 4X4 DIESEL,DUPONT KEVLAR,LIFTED,BUMPERS,NAV

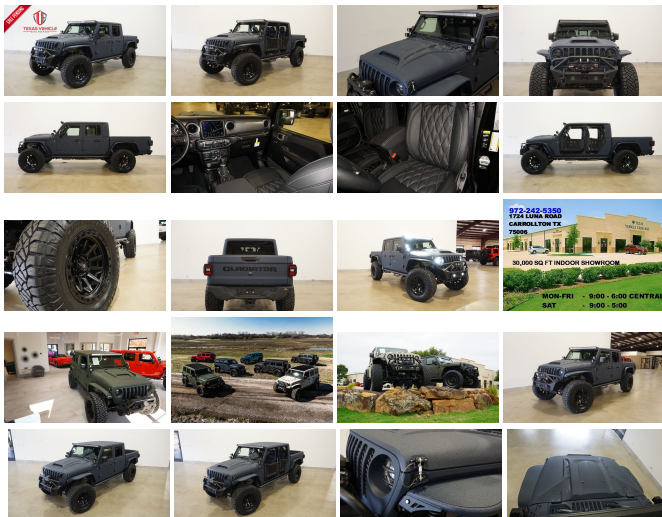
View this car on our website at tveauto.com/7049553/ebrochure



Our Price **\$89,900**

Specifications:

Year:	2021
VIN:	1C6JJTAMXML594628
Make:	Jeep
Stock:	594628
Model/Trim:	Gladiator Sport 4X4 DIESEL,DUPONT KEVLAR,LIFTED,BUMPERS,NAV
Condition:	Pre-Owned
Body:	Pickup Truck
Exterior:	Blue
Engine:	ENGINE: 3.0L V6 TURBO DIESEL W/ESS G3
Interior:	Black Leather
Transmission:	TRANSMISSION: 8-SPEED AUTOMATIC (8HP75)
Mileage:	75
Drivetrain:	4 Wheel Drive
Economy:	City 16 / Highway 22



NATION WIDE FINANCING

SUBMIT CREDIT APP WWW.TVEAUTO.COM

OR CALL 972-242-5350

"FERRARI NART BLUE EDITION"

CUSTOM BUILT **KEVLAR** 2021 JEEP
GLADIATOR SPORT 4X4 WITH 26S
PACKAGE

UPGRADES INCLUDE:

- * FERRARI NART BLUE KEVLAR COATING WITH ANTHRACITE ACCENTS
- * 3.0L V6 TURBO DIESEL ENGINE WITH START STOP
- * CUSTOM ALEA BLACK LEATHER WITH SILVER STITCHING
- * HEATED FRONT SEATS
- * FACTORY REMOTE START
- * POPULAR EQUIPMENT PACKAGE
- * ACTIVE SAFETY GROUP
- * FACTORY 8.4 INCH TOUCH SCREEN NAVIGATION WITH HD AM/FM/SIRIUS STEREO & ALPINE PREMIUM AUDIO SYSTEM
- * FACTORY BACK-UP CAMERA
- * U-CONNECT
- * 4 BODY ARMOR TRAIL DOORS & RECON MIRRORS
- * FAB FOURS STUBBY FRONT BUMPER WITH LED FOGLIGHTS
- * FRONT D-RINGS & ISOLATORS (ANTHRACITE)
- * SMITTYBILT NEW GEN II "X20" 10,000 LB WATERPROOF AND WIRELESS CONTROL WINCH WITH SYNTHETIC ROPE
- * FACTOR 55 PROLINK (BLACK)
- * FACTORY MESH GRILLE PAINTED (ANTHRACITE)
- * FACTORY LED HEADLIGHTS
- * RUGGED RIDGE BLACK HEADLIGHT GUARDS
- * NEW JT CUSTOM VENTED HOOD
- * DRAKE OFF ROAD HOOD LATCHES
- * RUGGED RIDGE JT HD STEEL TUBE

FENDER FLARES

* DV8 OFF ROAD FRONT & REAR INNER FENDERS

* RUBICON EXPRESS 3.5" SUSPENSION LIFT KIT WITH TERAFLX FALCON SHOCKS

* TERAFLX FALCON STABILIZER KIT

* MOPAR AUXILIARY SWITCH BANK KIT

* 50" LED LIGHT BAR AND 4 RIGID INDUSTRIES DUALY D2 LED PILLAR LIGHTS

* N-FAB BLACK TUBULAR STEPS

* SPRAY IN BEDLINER

* DV8 OFF ROAD REAR BUMPER WITH REAR PARK DISTANCE SENSORS

* ALL WEATHER FLOOR MATS

* TAZER JL PROGRAMMER WITH SPEEDOMETER CALIBRATION

* 20" FUEL MATTE BLACK "COVERT" WHEELS

* BRAND NEW NITTO RIDGE GRAPPLER 37X13.50R/20 TIRES

WE BUILD EVERY JEEP WITH PRIDE! DO NOT HESITATE TO CALL US WITH THIS JEEP BUILD. WE CAN MAKE CHANGES TO THIS JEEP BUILD OR CUSTOM BUILD ANY JEEP TO YOUR PREFERENCE. GIVE US A CALL @ 972-242-5350 OR STOP BY FOR A TEST DRIVE. 1724 LUNA RD IN CARROLLTON - 2 MILES NORTH OF 635.

Our Location :



2021 Jeep Gladiator Sport 4X4 DIESEL,DUPONT KEVLAR,LIFTED,BUMPERS,NAV
Texas Vehicle Exchange - 972-242-5350 - View this car on our website at veauto.com/7049553/ebrochure

Installed Options

Interior

- 110 mph Vehicle Max Speed Calibration- 2 12V DC Power Outlets
- 2 Seatback Storage Pockets
- 4-Way Passenger Seat -inc: Manual Recline and Fore/Aft Movement
- 6-Way Driver Seat -inc: Manual Recline, Height Adjustment, Fore/Aft Movement and Manual Lumbar Support
- 60-40 Folding Split-Bench Front Facing Fold Forward Seatback Cloth Rear Seat
- Air Filtration- Analog Appearance- Cloth Low-Back Bucket Seats- Compass
- Cruise Control w/Steering Wheel Controls- Day-Night Rearview Mirror
- Delayed Accessory Power- Fade-To-Off Interior Lighting- Front And Rear Map Lights
- Front Center Armrest w/Storage
- Front Seats w/Cloth Back Material and Manual Driver Lumbar
- Full Carpet Floor Covering -inc: Carpet Front And Rear Floor Mats
- Full Floor Console w/Locking Storage and 2 12V DC Power Outlets
- Gauges -inc: Speedometer, Odometer, Engine Coolant Temp, Tachometer, Engine Hour Meter, Trip Odometer and Trip Computer
- HVAC -inc: Console Ducts- Illuminated Front Cupholder- Illuminated Rear Cupholder
- Instrument Panel Bin, Dashboard Storage, Driver / Passenger And Rear Door Bins
- Interior Trim -inc: Metal-Look Instrument Panel Insert and Metal-Look Console Insert
- Locking Glove Box
- Manual Adjustable Front Head Restraints and Foldable Rear Head Restraints
- Manual Air Conditioning- Manual Tilt/Telescoping Steering Column
- Outside Temp Gauge- Proximity Key For Push Button Start Only
- Redundant Digital Speedometer- Sentry Key Engine Immobilizer- Systems Monitor
- Trip Computer- Urethane Gear Shifter Material
- Vanity w/Driver And Passenger Auxiliary Mirror

Exterior

- Aero-Composite Halogen Headlamps w/Delay-Off- Black Door Handles

- Black Front Bumper w/2 Tow Hooks- Black Rear Bumper w/1 Tow Hook
- Black Side Windows Trim- Body-Colored Grille- Clearcoat Paint
- Deep Tint Sunscreen Windows- Front Fog Lamps
- Full-Size Spare Tire Stored Underbody w/Crankdown- Galvanized Steel/Aluminum Panels
- Manual Convertible Top w/Fixed Roll-Over Protection- Regular Box Style
- Removable Rear Window- Steel Spare Wheel- Tailgate Rear Cargo Access
- Tires: 245/75R17 H/T- Variable Intermittent Wipers
- Wheels: 17" x 7.5" Black Steel Styled

Safety

- 110 mph Vehicle Max Speed Calibration- 2 12V DC Power Outlets
- 2 Seatback Storage Pockets
- 4-Way Passenger Seat -inc: Manual Recline and Fore/Aft Movement
- 6-Way Driver Seat -inc: Manual Recline, Height Adjustment, Fore/Aft Movement and Manual Lumbar Support
- 60-40 Folding Split-Bench Front Facing Fold Forward Seatback Cloth Rear Seat
- Air Filtration- Analog Appearance- Cloth Low-Back Bucket Seats- Compass
- Cruise Control w/Steering Wheel Controls- Day-Night Rearview Mirror
- Delayed Accessory Power- Fade-To-Off Interior Lighting- Front And Rear Map Lights
- Front Center Armrest w/Storage
- Front Seats w/Cloth Back Material and Manual Driver Lumbar
- Full Carpet Floor Covering -inc: Carpet Front And Rear Floor Mats
- Full Floor Console w/Locking Storage and 2 12V DC Power Outlets
- Gauges -inc: Speedometer, Odometer, Engine Coolant Temp, Tachometer, Engine Hour Meter, Trip Odometer and Trip Computer
- HVAC -inc: Console Ducts- Illuminated Front Cupholder- Illuminated Rear Cupholder
- Instrument Panel Bin, Dashboard Storage, Driver / Passenger And Rear Door Bins
- Interior Trim -inc: Metal-Look Instrument Panel Insert and Metal-Look Console Insert
- Locking Glove Box
- Manual Adjustable Front Head Restraints and Foldable Rear Head Restraints
- Manual Air Conditioning- Manual Tilt/Telescoping Steering Column
- Outside Temp Gauge- Proximity Key For Push Button Start Only
- Redundant Digital Speedometer- Sentry Key Engine Immobilizer- Systems Monitor
- Trip Computer- Urethane Gear Shifter Material
- Vanity w/Driver And Passenger Auxiliary Mirror

Mechanical

- 1700# Maximum Payload- 180 Amp Alternator- 22 Gal. Fuel Tank- 3 Skid Plates
- 3.73 Rear Axle Ratio- 50 State Emissions
- 650CCA Maintenance-Free Battery w/Run Down Protection
- Anti-Lock 4-Wheel Disc Heavy Duty Brakes- Auto Locking Hubs
- Brake Actuated Limited Slip Differential
- Brakes w/Front And Rear Vented Discs, Brake Assist and Hill Hold Control
- Class II Towing Equipment -inc: Hitch and Trailer Sway Control
- Electro-Hydraulic Power Assist Steering- Engine Auto Stop-Start Feature
- Engine Oil Cooler- Engine: 3.6L V6 24V VVT UPG I w/ESS
- Front And Rear Anti-Roll Bars- GVWR: 5,800 lbs- HD Shock Absorbers
- Leading Link Front Suspension w/Coil Springs- Manual Transfer Case
- Normal Duty Plus Suspension- Part-Time Four-Wheel Drive
- Single Stainless Steel Exhaust- Trailer Wiring Harness
- Trailing Arm Rear Suspension w/Coil Springs- Transmission: 6-Speed Manual

Option Packages

Factory Installed Packages

ENGINE: 3.0L V6 TURBO DIESEL W/ESS
G3

-inc: ABS 4-Wheel HD Disc Brakes w/Front FNC, Selective Catalytic Reduction (Urea), Non-Lock Fuel Cap w/Discriminator, Gray EcoDiesel Badge, Supplemental Heater, Tires: 245/75R17 BSW A/T Dueler, Stop-Start Dual Battery System, GVWR: 6,350 lbs, Auxiliary Battery, Anti-Spin Differential Rear Axle, 19 Gallon Fuel Tank

\$4,000

TRANSMISSION: 8-SPEED AUTOMATIC

(8HP75)
-inc: Tip Start, Transmission Skid
Plate, Selec-Speed Control \$2,000

8.4" RADIO & PREMIUM AUDIO GROUP

-inc: Google Android Auto, \$2,095
SiriusXM Traffic Plus, USB
Host Flip, Radio: Uconnect 4C
Nav w/8.4" Display, Integrated
Center Stack Radio, Rear View
Auto Dim Mirror, For Details,
Visit DriveUconnect.com,
Console Bin Task Light, 5-Year
SiriusXM Travel Link Service,
GPS Navigation, 5-Year
SiriusXM Traffic Service, Media
Hub w/2 Charge Only USBs,
8.4" Touchscreen Display,
Apple CarPlay, Off-Road Info
Pages, Alpine Premium Audio
System, SiriusXM Satellite
Radio, SiriusXM Radio Service,
For More Info, Call 800-643-
2112, GPS Antenna Input,
400W Inverter, HD Radio, Air
Conditioning w/Auto Temp
Control, 1-Year SiriusXM
Guardian Trial, SiriusXM Travel
Link, Emergency/Assistance
Call, 115V Auxiliary Power
Outlet

AUXILIARY SWITCH GROUP

-inc: 700 Amp Maintenance Free \$345
Battery, 240 Amp Alternator,
Auxiliary Switches

POPULAR EQUIPMENT PACKAGE

-inc: Convenience Group, \$1,695
Universal Garage Door
Opener, Trailer Tow Package,
Trailer Hitch Zoom, Class IV
Hitch Receiver, Heavy Duty
Engine Cooling, 240 Amp
Alternator, Black 3-Piece Hard
Top, Freedom Panel Storage
Bag, Rear Window Defroster,
Rear Sliding Window,
Technology Group, Google
Android Auto, SiriusXM
Satellite Radio, SiriusXM Radio
Service, For More Info, Call
800-643-2112, GPS Antenna
Input, USB Host Flip, Cluster
7.0" TFT Color Display,
Integrated Center Stack Radio,
7.0" Touch Screen Display, Air
Conditioning w/Auto Temp
Control, Integrated Voice
Command w/Bluetooth, Apple
CarPlay

SAFETY GROUP

-inc: ParkSense Rear Park Assist \$995
System, Blind Spot & Cross
Path Detection, LED Taillamps

QUICK ORDER PACKAGE 26S SPORT S

-inc: Engine: 3.0L V6 Turbo Diesel \$3,400
w/ESS G3, Transmission: 8-
Speed Automatic (8HP75),
Tires: 245/75R17 BSW All-
Terrain, Speed Sensitive
Power Locks, Automatic
Headlamps, Leather Wrapped
Steering Wheel, Molded in
Color Bumper w/Accent Color,
Body Color Fender Flares (2-
Piece), Front 1-Touch Down
Power Windows, Sport S,
Power Heated Mirrors,
Daytime Running Lamp
System, Security Alarm, Power
Tailgate Lock, Remote Keyless
Entry, Sun Visors w/Illuminated
Vanity Mirrors

Option Packages Total
\$14,530

tveauto.com

972-242-5350

1724 Luna Road

Carrollton, TX 75006

© 2023 AutoRevo - All rights reserved. - Powered by AutoRevo