

2022 Chevrolet Silverado 1500 LTD RST

View this car on our website at parksdeals.com/7048530/ebrochure



Our Price **\$55,005**

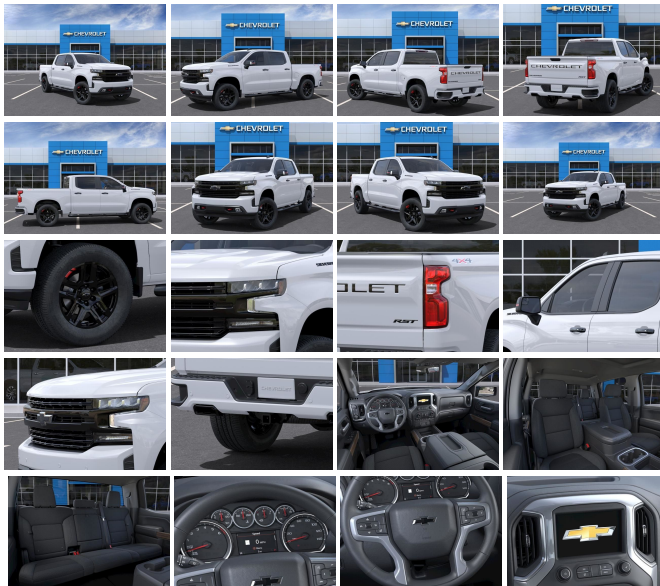
Retail Value **\$56,005**

Specifications:

Year:	2022
VIN:	1GCUYEED1NZ173869
Make:	Chevrolet
Stock:	173869
Model/Trim:	Silverado 1500 LTD RST
Condition:	New
Body:	Pickup Truck
Exterior:	Summit White
Engine:	ENGINE, 5.3L ECOTEC3 V8
Interior:	Jet Blk Clth Cloth
Mileage:	0
Drivetrain:	4 Wheel Drive
Economy:	City 15 / Highway 19

2022 Chevrolet Silverado 1500 RST Summit White EcoTec3 5.3L V8
4WD 8-Speed Automatic

8-Speed Automatic, 4WD, Black Cloth, 10-Way Power Driver Seat w/Lumbar, 12-Volt Rear Auxiliary Power Outlet, 2 USB Ports (First Row), 4" Black Round Assist Steps (LPO), 4.2" Diagonal Color Display Driver Info Center, 4-Wheel Disc Brakes, 6-Speaker Audio System, ABS brakes, Air Conditioning, Alloy wheels, All-Star Edition, Apple CarPlay/Android Auto, Auto-Locking Rear Differential, Automatic temperature control, Bed Protection Package, Bluetooth?? For Phone, Body Color Grille, Chevrolet Connected Access Capable, Chevytec Spray-On Black Bedliner, Cloth Rear Seat w/Storage Package, Color-Keyed Carpeting Floor Covering, Convenience Package, Convenience Package w/Buckets Seats, Deep-Tinted Glass, Dual Exhaust w/Black Exhaust Tips, Dual front impact airbags, Dual front side impact airbags, Dual-Zone Automatic Climate Control, Electric Rear-Window Defogger, Electronic Cruise Control, Electronic Stability Control, EZ Lift Power Lock & Release Tailgate, Floor Mounted Center Console, Front anti-roll bar, Front Bucket Seats, Front dual zone A/C, Front Frame-Mounted Black Recovery Hooks, Front LED Fog Lamps, Front Rubberized Vinyl Floor Mats, Front wheel independent suspension, Heated Driver & Front Outboard Passenger Seats, Heated Steering Wheel, High Gloss Black Door Handles, High Gloss Black Grille, High Gloss Black Mirror Caps, Hitch Guidance, Keyless Open & Start, Lane Change Alert w/Side Blind Zone Alert, Leather Wrapped Steering Wheel, LED Cargo Area Lighting, LED Reflector High Intensity Headlamps, Low tire pressure warning, Manual Tilt/Telescoping Steering Column, Occupant sensing airbag, OnStar & Chevrolet Connected Services Capable, Overhead airbag, Performance Red Recovery Hooks, Perimeter Lighting, Power



Door Locks, Power driver seat, Power Front Windows w/Driver Express Up/Down, Power Front Windows w/Passenger Express Down, Power Rear Windows w/Express Down, Power steering, Power windows, Preferred Equipment Group 1SP, Radio: Chevrolet Infotainment 3 System, Rear 60/40 Folding Bench Seat (Folds Up), Rear Cross Traffic Alert, Rear Dual USB Charging-Only Ports, Rear Rubberized-Vinyl Floor Mats, Rear Vision Camera, Rear Wheelhouse Liners, Rear window defroster, Redline Edition, Remote keyless entry, Remote Vehicle Starter System, Safety Package, SiriusXM Radio, Standard Tailgate, Steering Wheel Audio Controls, Steering wheel mounted audio controls, Theft Deterrent System (Unauthorized Entry), Trailing Package, Ultrasonic Front & Rear Park Assist, Variably intermittent wipers, Wheels: 20" x 9" High Gloss Black Painted Aluminum, Wi-Fi Hot Spot Capable.

Contact us online at www.parkscharlotte.com or give us a call at (704) 288-0662 to have your questions answered, obtain a price quote for this vehicle, or schedule your test drive today. Our prices cannot be beat! Come visit us at 8530 IKEA BLVD CHARLOTTE NC. Price excludes administrative, origination, documentary, procurement and/or other administrative fee. You may or may not qualify for all rebates. Price does not include tax, tag, and fees. Price does not include any aftermarket products, bodies, or upfits. Price includes applicable rebates:\$500 - Customer Cash. Exp. 04/04/2022 \$500 - Purchase Bonus Cash. Exp. 04/04/2022

2022 Chevrolet Silverado 1500 LTD RST

Parks Chevrolet, Inc. - 833-825-2763 - View this car on our website at parksdeals.com/7048530/ebrochure

Vehicle History Report : as Of 04/23/2024



Snapshot

2022 CHEVROLET SILVERADO 1500 LIMITED RST



No accidents or damage reported to CARFAX



2 Service history records



CARFAX 1-Owner vehicle



Personal vehicle



Last owned in South Carolina



1,561 Last reported odometer reading



FREE CARFAX Report

See the full CARFAX Report for additional information

*carfax Snapshot is a reflection of available information on the date the report was pulled. carfax is constantly being updated with new information and is subject to change at any time.

Our Location :



2022 Chevrolet Silverado 1500 LTD RST

Parks Chevrolet, Inc. - 833-825-2763 - View this car on our website at parksdeals.com/7048530/ebrochure

Installed Options

Interior

- Seats, front 40/20/40 split-bench with covered armrest storage and under-seat storage (lockable) (Not available with (PCH) Convenience Package with Bucket Seats.)
- Seat trim, Cloth- Seat adjuster, driver 10-way power including lumbar
- Seat, rear 60/40 folding bench (folds up), 3-passenger (includes child seat top tether anchor)
- Seat, Cloth Rear with Storage Package 60/40 folding bench for Crew Cab models, includes seatback storage on left and right side, center fold out armrest with 2 cupholders, (includes child seat top tether anchor)
- Floor mats, rubberized vinyl, front (Deleted when (BKF) Floor liners or LPO floor liners are ordered.)
- Floor mats, rubberized-vinyl rear (Deleted when (BKF) Floor liners or LPO floor liners are ordered.)
- Steering wheel, leather-wrapped
- Steering wheel, heated (Vehicles built prior to 12-6-2021 include heated steering wheel. Vehicles built on or after 12-6-2021 will be forced to include (00G) Not Equipped with Heated Steering Wheel, which removes the heated steering wheel. See dealer for details or the window label for the features on a specific vehicle.)
- Steering column, manual tilt and telescoping
- Window, power front, passenger express down- Windows, power rear, express down

Option Packages

Factory Installed Packages

ENGINE, 5.3L ECOTEC3 V8
(355 hp [265 kW] @ 5600 rpm, 383 lb-ft of torque [518 Nm] @ 4100 rpm); featuring available Dynamic Fuel Management that enables the engine to operate in 17 different patterns between 2 and 8 cylinders, depending on demand, to optimize power delivery and efficiency

- Door locks, power- Keyless Open and Start- Power outlet, front auxiliary, 12-volt
- USB ports, 2 (first row) located on instrument panel- Power outlet, rear auxiliary, 12-volt
- Air conditioning, dual-zone automatic climate control- Air vents, rear, heating/cooling
- Defogger, rear-window electric- Seat adjuster, passenger 4-way manual
- Seating, heated driver and front outboard passenger (Vehicles built prior to 11-15-2021 include heated driver and front outboard passenger seats. Certain vehicles built on or after 11-15-2021 will be forced to include (00V) Not Equipped with Heated or Ventilated Front Seats, which removes heated front seats. See dealer for details or the window label for the features on a specific vehicle. Feature will not function on certain models without dealer retrofit, expected late Q2, 2022, see dealer for details.) (Vehicles built prior to 11-15-2021 include heated driver and front outboard passenger seats. Certain vehicles built on or after 11-15-2021 will be forced to include (00V) Not Equipped with Heated or Ventilated Front Seats, which removes heated front seats. See dealer for details or the window label for the features on a specific vehicle. Feature will not function on certain models without dealer retrofit, expected late Q2, 2022, see dealer for details.)
- Floor covering, color-keyed carpeting- Steering wheel audio controls
- Instrument cluster, 6-gauge cluster featuring speedometer, fuel level, engine temperature, tachometer, voltage and oil pressure
- Driver Information Center, 4.2" diagonal color display includes driver personalization
- Exterior Temperature Display located in radio display
- Compass located in instrument cluster- Rear Seat Reminder
- Window, power front, drivers express up/down- Remote vehicle starter system
- Cruise control, electronic with set and resume speed, steering wheel-mounted
- Theft-deterrent system, unauthorized entry- USB ports, dual, charge-only (2nd row)
- Mirror, inside rearview, manual tilt
- Assist handles front A-pillar mounted for driver and passenger, rear B-pillar mounted
- Chevrolet Connected Access capable (Subject to terms. See onstar.com or dealer for details.)

Exterior

- Wheels, 18" x 8.5" (45.7 cm x 21.6 cm) Bright Silver painted aluminum
- Tires, 265/65R18SL all-season, blackwall- Tire, spare 265/70R17SL all-season, blackwall
- Recovery hooks, front, frame-mounted, Black
- Headlamps, LED reflector with LED signature Daytime Running Lamps
- Mirrors, outside heated power-adjustable (When (PQB) Safety Package is ordered, includes Perimeter Lighting.)
- Wheel, 17" x 8" (43.2 cm x 20.3 cm) full-size, steel spare
- Tire carrier lock, keyed cylinder lock that utilizes same key as ignition and door
- Bumper, front (Body-color.)- Bumper, rear (Body-color.)- CornerStep, rear bumper
- Cargo tie downs (12), fixed rated at 500 lbs per corner
- Grille (Body color bars with high gloss Black mesh inserts.) - Black Bowtie, (front grille)
- Fog lamps, front, LED
- Lamps, cargo area, cab mounted integrated with center high mount stop lamp, with switch in bank on left side of steering wheel
- LED Cargo Area Lighting located in pickup bed, activated with switch on center switch bank or key fob
- Taillamps, LED with signature
- Mirror caps, painted (High gloss Black. Not available with (DPO) trailering mirrors.)
- Glass, deep-tinted- Door handles, body-color- Tailgate and bed rail protection cap, top
- Tailgate, standard
- Tailgate, gate function manual with EZ Lift includes power lock and release

Safety

- Seats, front 40/20/40 split-bench with covered armrest storage and under-seat storage (lockable) (Not available with (PCH) Convenience Package with Bucket Seats.)
- Seat trim, Cloth- Seat adjuster, driver 10-way power including lumbar
- Seat, rear 60/40 folding bench (folds up), 3-passenger (includes child seat top tether anchor)
- Seat, Cloth Rear with Storage Package 60/40 folding bench for Crew Cab models, includes seatback storage on left and right side, center fold out armrest with 2 cupholders, (includes child seat top tether anchor)
- Floor mats, rubberized vinyl, front (Deleted when (BKF) Floor liners or LPO floor liners are ordered.)
- Floor mats, rubberized-vinyl rear (Deleted when (BKF) Floor liners or LPO floor liners are ordered.)
- Steering wheel, leather-wrapped
- Steering wheel, heated (Vehicles built prior to 12-6-2021 include heated steering wheel. Vehicles built on or after 12-6-2021 will be forced to include (00G) Not Equipped with Heated Steering Wheel, which removes the heated steering wheel. See dealer for details or the window label for the features on a specific vehicle.)
- Steering column, manual tilt and telescoping
- Window, power front, passenger express down- Windows, power rear, express down
- Door locks, power- Keyless Open and Start- Power outlet, front auxiliary, 12-volt
- USB ports, 2 (first row) located on instrument panel- Power outlet, rear auxiliary, 12-volt
- Air conditioning, dual-zone automatic climate control- Air vents, rear, heating/cooling
- Defogger, rear-window electric- Seat adjuster, passenger 4-way manual

- Seating, heated driver and front outboard passenger (Vehicles built prior to 11-15-2021 include heated driver and front outboard passenger seats. Certain vehicles built on or after 11-15-2021 will be forced to include (00V) Not Equipped with Heated or Ventilated Front Seats, which removes heated front seats. See dealer for details or the window label for the features on a specific vehicle. Feature will not function on certain models without dealer retrofit, expected late Q2, 2022, see dealer for details.) (Vehicles built prior to 11-15-2021 include heated driver and front outboard passenger seats. Certain vehicles built on or after 11-15-2021 will be forced to include (00V) Not Equipped with Heated or Ventilated Front Seats, which removes heated front seats. See dealer for details or the window label for the features on a specific vehicle. Feature will not function on certain models without dealer retrofit, expected late Q2, 2022, see dealer for details.)
- Floor covering, color-keyed carpeting- Steering wheel audio controls
- Instrument cluster, 6-gauge cluster featuring speedometer, fuel level, engine temperature, tachometer, voltage and oil pressure
- Driver Information Center, 4.2" diagonal color display includes driver personalization
- Exterior Temperature Display located in radio display
- Compass located in instrument cluster- Rear Seat Reminder
- Window, power front, drivers express up/down- Remote vehicle starter system
- Cruise control, electronic with set and resume speed, steering wheel-mounted
- Theft-deterrent system, unauthorized entry- USB ports, dual, charge-only (2nd row)
- Mirror, inside rearview, manual tilt
- Assist handles front A-pillar mounted for driver and passenger, rear B-pillar mounted
- Chevrolet Connected Access capable (Subject to terms. See onstar.com or dealer for details.)

Mechanical

- Transmission, 8-speed automatic, electronically controlled with overdrive and tow/haul mode. Includes Cruise Grade Braking and Powertrain Grade Braking (Included and only available with (L3B) 2.7L Turbo engine or (L84) 5.3L EcoTec3 V8 engine.)
- Engine, 5.3L EcoTec3 V8 (355 hp [265 kW] @ 5600 rpm, 383 lb-ft of torque [518 Nm] @ 4100 rpm); featuring available Dynamic Fuel Management that enables the engine to operate in 17 different patterns between 2 and 8 cylinders, depending on demand, to optimize power delivery and efficiency (Base engine on C*18*43 Crew Cab models.)
- Rear axle, 3.23 ratio (Included and only available with (L84) 5.3L EcoTec3 V8 engine, (L87) 6.2L EcoTec3 V8 engine or (LM2) Duramax 3.0L Turbo-Diesel I6 engine.)
- Durabed, pickup bed
- GVWR, 7100 lbs. (3221 kg) (Requires Crew Cab 4WD model with (L84) 5.3L EcoTec3 V8 engine or (L87) 6.2L EcoTec3 V8 engine without (NHT) Max Trailering Package.)
- Automatic Stop/Start (Standard on vehicles equipped with (MQE) 8-speed automatic transmission or (LM2) Duramax 3.0L Turbo-Diesel I6 engine. Vehicles with a V8 engine and (MQB) 10-speed automatic will have (NSS) Not Equipped with Automatic Stop/Start, which removes Automatic Stop/Start and its content. See dealer for details.)
- Transfer case, single speed electronic Autotrac with push button control (4WD models only)
- Auto-locking rear differential- Four wheel drive
- Cooling, external engine oil cooler (Included and only available with (L84) 5.3L EcoTec3 V8 engine or (L87) 6.2L EcoTec3 V8 engine.)
- Cooling, auxiliary external transmission oil cooler (Included and only available with V8 engines.)
- Battery, heavy-duty 730 cold-cranking amps/80 Amp-hr, maintenance-free with rundown protection and retained accessory power
- Alternator, 170 amps (Included and only available with (L84) 5.3L EcoTec3 V8 engine or (L87) 6.2L EcoTec3 V8 engine. Not available with (NHT) Max Trailering Package, (LM2) Duramax 3.0L Turbo-Diesel I6 engine or (L3B) 2.7L Turbo engine.)
- Frame, fully-boxed, hydroformed front section
- Steering, Electric Power Steering (EPS) assist, rack-and-pinion
- Brakes, 4-wheel antilock, 4-wheel disc with DURALIFE rotors- Brake lining wear indicator
- Capless Fuel Fill- Exhaust, single outlet

Parks Chevrolet, Inc.

parksdeals.com

833-825-2763

615 NC-66 South

Kernersville, NC 27284

© 2024 AutoRevo - All rights reserved. - Powered by AutoRevo