

# 2022 Chevrolet Silverado 1500 LTD High Country

View this car on our website at [parksdeals.com/7048517/ebrochure](https://parksdeals.com/7048517/ebrochure)



Our Price **\$63,749**

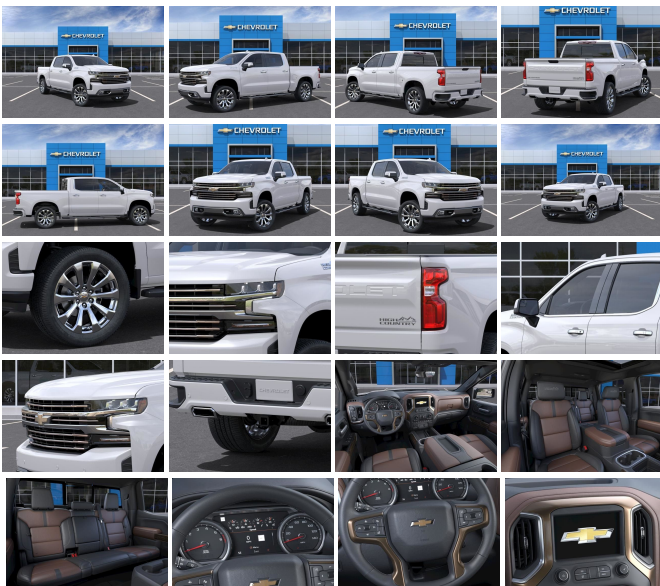
Retail Value ~~\$67,515~~

## Specifications:

|                    |                                 |
|--------------------|---------------------------------|
| <b>Year:</b>       | 2022                            |
| <b>VIN:</b>        | 3GCUYHED6NG164361               |
| <b>Make:</b>       | Chevrolet                       |
| <b>Stock:</b>      | 164361                          |
| <b>Model/Trim:</b> | Silverado 1500 LTD High Country |
| <b>Condition:</b>  | New                             |
| <b>Body:</b>       | Pickup Truck                    |
| <b>Exterior:</b>   | Iridescent Pearl Tricoat        |
| <b>Engine:</b>     | ENGINE, 5.3L ECOTEC3 V8         |
| <b>Interior:</b>   | Jet Black/Umber Leather         |
| <b>Mileage:</b>    | 0                               |
| <b>Drivetrain:</b> | 4 Wheel Drive                   |
| <b>Economy:</b>    | City 15 / Highway 19            |

2022 Chevrolet Silverado 1500 High Country Iridescent Pearl Tricoat EcoTec3 5.3L V8 4WD 10-Speed Automatic

10-Speed Automatic, 4WD, Jet Black/Umber Leather, 10-Way Power Driver Seat w/Lumbar, 10-Way Power Passenger Seat Adjuster w/Lumbar, 120-Volt Bed Mounted Power Outlet, 120-Volt Instrument Panel Power Outlet, 12-Volt Rear Auxiliary Power Outlet, 15" Diagonal Multicolor Head-Up Display, 2nd Row Heated Outboard Seats, 4-Wheel Disc Brakes, 8" Driver Information Center, ABS brakes, Adaptive Cruise Control, Advanced Trailering System, Air Conditioning, Alloy wheels, All-Weather Floor Liner (LPO), Auto-Dimming Inside Rear-View Mirror, Auto-Locking Rear Differential, Automatic Emergency Braking, Automatic temperature control, Auxiliary External Transmission Oil Cooler, Bed View Camera, Bluetooth?? For Phone, Body-Color Painted Mirror Caps, Chevrolet Connected Access Capable, Chevytec Spray-On Black Bedliner, Chrome Assist Steps, Chrome Grille, Chrome Recovery Hooks, Color-Keyed Carpeting Floor Covering, Deep-Tinted Glass, Driver Memory, Dual Exhaust w/Polished Outlets, Dual front impact airbags, Dual front side impact airbags, Electric Rear-Window Defogger, Electronic Cruise Control, Floor Mounted Center Console, Following Distance Indicator, Forward Collision Alert, Front anti-roll bar, Front Carpeted Floor Mats, Front dual zone A/C, Front LED Fog Lamps, Front Pedestrian Braking, Front wheel independent suspension, HD Rear Vision Camera, HD Surround Vision w/2 Trailer View Camera Provisions, Heated Driver & Front Outboard Passenger Seats, Heated Steering Wheel, High Country Deluxe, Hitch Guidance, Hitch Guidance w/Hitch View, Integrated Trailer Brake Controller, IntelliBeam Automatic High Beam On/Off, Keyless Open & Start, Lane Change Alert w/Side Blind Zone Alert, Lane Keep Assist w/Lane Departure Warning, Leather



Wrapped Steering Wheel, LED Cargo Area Lighting, Low tire pressure warning, Manual Tilt/Telescoping Steering Column, Memory seat, Navigation System, Occupant sensing airbag, OnStar & Chevrolet Connected Services Capable, Outside Heated Power-Adjustable Mirrors, Overhead airbag, Power Door Locks, Power driver seat, Power Front Passenger Windows w/Express Up/Down, Power Front Windows w/Driver Express Up/Down, Power Rear Windows w/Express Down, Power Sliding Rear Window w/Rear Defogger, Power steering, Power Sunroof, Power Tailgate, Power windows, Preferred Equipment Group 3LZ, Rear Camera Mirror, Rear Carpeted Floor Mats, Rear Cross Traffic Alert, Rear Dual USB Charging-Only Ports, Rear Wheelhouse Liners, Rear window defroster, Remote keyless entry, Remote Vehicle Starter System, Safety Alert Seat, Safety Package II, Security system, Standard Tailgate, Steering Wheel Audio Controls, Steering wheel mounted audio controls, Technology Package, Theft Deterrent System (Unauthorized Entry), Trailing Package, Ultrasonic Front & Rear Park Assist, Universal Home Remote, Up-Level Rear Seat w/Storage Package, Variably intermittent wipers, Ventilated Driver & Front Passenger Seats, Wi-Fi Hot Spot Capable, Wireless Charging, Wireless Phone Projection.

Contact us online at [www.parkscharlotte.com](http://www.parkscharlotte.com) or give us a call at (704) 288-0662 to have your questions answered, obtain a price quote for this vehicle, or schedule your test drive today. Our prices cannot be beat! Come visit us at 8530 IKEA BLVD CHARLOTTE NC. Price excludes administrative, origination, documentary, procurement and/or other administrative fee. You may or may not qualify for all rebates. Price does not include tax, tag, and fees. Price does not include any aftermarket products, bodies, or upfits. Price includes applicable rebates:\$500 - Purchase Bonus Cash. Exp. 04/04/2022

---

2022 Chevrolet Silverado 1500 LTD High Country

Parks Chevrolet, Inc. - 833-825-2763 - View this car on our website at [parksdeals.com/7048517/ebrochure](http://parksdeals.com/7048517/ebrochure)

## Vehicle History Report : as Of 04/23/2024

**CARFAX**

Snapshot

**2022 CHEVROLET SILVERADO 1500 LIMITED  
HIGH COUNTRY**



No accidents or damage reported to CARFAX



8 Service history records



CARFAX 1-Owner vehicle



Personal vehicle



Last owned in North Carolina



28,091 Last reported odometer reading



**FREE CARFAX Report**

See the full CARFAX Report for additional information

\*carfax Snapshot is a reflection of available information on the date the report was pulled. carfax is constantly being updated with new information and is subject to change at any time.

## Our Location :



2022 Chevrolet Silverado 1500 LTD High Country

Parks Chevrolet, Inc. - 833-825-2763 - View this car on our website at [parksdeals.com/7048517/ebrochure](https://parksdeals.com/7048517/ebrochure)

## Installed Options

### Interior

- Seats, front bucket with center console - Seat trim, Perforated leather seating surfaces
- Seating, heated driver and front outboard passenger
- Seats, ventilated driver and front passenger
- Driver memory recalls driver "presets" for power driver seat and outside mirrors
- Floor mats, carpeted front (Deleted when (BKF) Floor liners or LPO floor liners are ordered.)
- Floor mats, carpeted rear (Deleted when (BKF) Floor liners or LPO floor liners are ordered.)
- Window, power front, passenger express up/down- Windows, power rear, express down
- Window, power, rear sliding with rear defogger- Door locks, power
- Keyless Open and Start
- Cruise control, electronic with set and resume speed, steering wheel-mounted
- Power outlet, front auxiliary, 12-volt- USB ports, 2 (first row) located on instrument panel
- USB Ports (Inside Console with bucket seats), 2 also includes 1 SD card reader and auxiliary jack
- Power outlet, rear auxiliary, 12-volt- Air conditioning, dual-zone automatic climate control
- Air vents, rear, heating/cooling- Defogger, rear-window electric
- Mirror, inside rearview auto-dimming- Seat adjuster, driver 10-way power including lumbar
- Seat adjuster, passenger 10-way power including lumbar
- Seat, 1st level Box with Storage Package 60/40 folding bench for Crew Cab models

## Option Packages

### Factory Installed Packages

**ENGINE, 5.3L ECOTEC3 V8**  
(355 hp [265 kW] @ 5600 rpm, 383 lb-ft of torque [518 Nm] @ 4100 rpm); featuring available Dynamic Fuel Management that enables the engine to operate in 17 different patterns between 2 and 8 cylinders, depending on demand, to optimize power delivery and efficiency

- Seat, up-level rear with storage package 00/40 including bench for crew cab models, includes full-length bench seat, seatback storage on left and right side, center fold out armrest with 2 cupholders, full cab width underseat storage, (includes child seat top tether anchor) (Rear seat features leather seating surfaces.)
- Center Console, floor-mounted with cup holders, cell phone storage, power cord management, hanging file folder capability
- Floor covering, color-keyed carpeting- Steering wheel, leather-wrapped
- Steering wheel, heated- Steering wheel audio controls
- Steering column, manual tilt and telescoping
- Instrument cluster, 6-gauge cluster featuring speedometer, fuel level, engine temperature, tachometer, voltage and oil pressure
- Driver Information Center, enhanced, 8" diagonal multicolor digital display includes analog speedometer and tachometer gauges
- Exterior Temperature Display located in radio display
- Compass located in instrument cluster- Rear Seat Reminder
- Window, power front, drivers express up/down- Remote vehicle starter system
- Universal Home Remote- Theft-deterrent system, unauthorized entry
- Wireless Charging (Not compatible with all phones. Compliant batteries include Qi and PMA technologies. Reference Mobile devices manual to confirm what type of battery it uses.)
- Power outlet, instrument panel, 120-volt (400 watts shared with (KC9) bed mounted power outlet)
- USB ports, dual, charge-only (2nd row)
- Power outlet, bed mounted, 120-volt (400 watts shared with (K14) instrument panel mounted power outlet)
- Assist handles front A-pillar mounted for driver and passenger, rear B-pillar mounted
- Chevrolet Connected Access capable (Subject to terms. See onstar.com or dealer for details.)

## Exterior

- Wheels, 20" x 9" (50.8 cm x 22.9 cm) painted aluminum with machined face and Light Argent pockets
- Tires, 275/60R20SL all-terrain, blackwall (Standard on 4WD models. Available as a free flow option on 2WD models.)
- Assist steps, Chrome, wheel to wheel
- Headlamps, LED reflector (high intensity) with LED signature curtain Daytime Running Lamps
- Mirrors, outside heated power-adjustable, power-folding and driver-side auto-dimming puddle lamps, side perimeter lighting and memory
- Tire, spare 255/80R17SL all-season, blackwall
- Wheel, 17" x 8" (43.2 cm x 20.3 cm) full-size, steel spare
- Tire carrier lock, keyed cylinder lock that utilizes same key as ignition and door
- Bumper, front (Body-color.)- Bumper, rear (Body-color.)- CornerStep, rear bumper
- Recovery hooks, chrome
- Chevytec spray-on bedliner, Black with Chevrolet logo (does not include spray-on liner on tailgate due to Black composite inner panel) (Available with Ship Thru codes (VBE), (VCO), (VDT), (VYC) or (VYS).)
- Cargo tie downs (12), fixed rated at 500 lbs per corner - Wheelhouse liners, rear
- Grille (Chrome bars with high gloss Black mesh and Chrome/Bronze inserts.)
- Fog lamps, front, LED
- Lamps, cargo area, cab mounted integrated with center high mount stop lamp, with switch in bank on left side of steering wheel
- LED Cargo Area Lighting located in pickup bed, activated with switch on center switch bank or key fob
- Taillamps, LED with signature
- Mirror caps, painted (Body-color. Not available with (DQS) trailering mirrors.)
- Glass, deep-tinted- Door handles, chrome- Tailgate and bed rail protection cap, top
- Tailgate, standard
- Tailgate, gate function power up/down with power lock and release (Not available with (QK2) Multi-Flex tailgate.)

## Safety

- Seats, front bucket with center console - Seat trim, Perforated leather seating surfaces
- Seating, heated driver and front outboard passenger
- Seats, ventilated driver and front passenger
- Driver memory recalls driver "presets" for power driver seat and outside mirrors
- Floor mats, carpeted front (Deleted when (BKF) Floor liners or LPO floor liners are ordered.)
- Floor mats, carpeted rear (Deleted when (BKF) Floor liners or LPO floor liners are ordered.)
- Window, power front, passenger express up/down- Windows, power rear, express down
- Window, power, rear sliding with rear defogger- Door locks, power
- Keyless Open and Start
- Cruise control, electronic with set and resume speed, steering wheel-mounted
- Power outlet, front auxiliary, 12-volt- USB ports, 2 (first row) located on instrument panel
- USB Ports (Inside Console with bucket seats), 2 also includes 1 SD card reader and auxiliary jack

- Power outlet, rear auxiliary, 12-volt- Air conditioning, dual-zone automatic climate control
- Air vents, rear, heating/cooling- Defogger, rear-window electric
- Mirror, inside rearview auto-dimming- Seat adjuster, driver 10-way power including lumbar
- Seat adjuster, passenger 10-way power including lumbar
- Seat, Up-level Rear with Storage Package 60/40 folding bench for Crew Cab models, includes full-length bench seat, seatback storage on left and right side, center fold out armrest with 2 cupholders, full cab width underseat storage, (includes child seat top tether anchor) (Rear seat features leather seating surfaces.)
- Center Console, floor-mounted with cup holders, cell phone storage, power cord management, hanging file folder capability
- Floor covering, color-keyed carpeting- Steering wheel, leather-wrapped
- Steering wheel, heated- Steering wheel audio controls
- Steering column, manual tilt and telescoping
- Instrument cluster, 6-gauge cluster featuring speedometer, fuel level, engine temperature, tachometer, voltage and oil pressure
- Driver Information Center, enhanced, 8" diagonal multicolor digital display includes analog speedometer and tachometer gauges
- Exterior Temperature Display located in radio display
- Compass located in instrument cluster- Rear Seat Reminder
- Window, power front, drivers express up/down- Remote vehicle starter system
- Universal Home Remote- Theft-deterrent system, unauthorized entry
- Wireless Charging (Not compatible with all phones. Compliant batteries include Qi and PMA technologies. Reference Mobile devices manual to confirm what type of battery it uses.)
- Power outlet, instrument panel, 120-volt (400 watts shared with (KC9) bed mounted power outlet)
- USB ports, dual, charge-only (2nd row)
- Power outlet, bed mounted, 120-volt (400 watts shared with (K14) instrument panel mounted power outlet)
- Assist handles front A-pillar mounted for driver and passenger, rear B-pillar mounted
- Chevrolet Connected Access capable (Subject to terms. See onstar.com or dealer for details.)

## Mechanical

- Transmission, 10-speed automatic, electronically controlled with overdrive and tow/haul mode. Includes Cruise Grade Braking and Powertrain Grade Braking (Included and only available with 4WD models, (LM2) Duramax 3.0L Turbo-Diesel I6 engine or (L87) 6.2L EcoTec3 V8 engine. Vehicles built with a V8 engine and (MQB) 10-speed automatic transmission will have (NSS) Not Equipped with Automatic Stop/Start, which removes Automatic Stop/Start and its content.)
- Advanced Trailing System includes checklist, trailer maintenance reminders, trailer security alerts, trailer mileage, tow/haul reminder, trailer electrical diagnostics and Trailer Tire Pressure Monitor System module
- Engine, 5.3L EcoTec3 V8 (355 hp [265 kW] @ 5600 rpm, 383 lb-ft of torque [518 Nm] @ 4100 rpm); featuring available Dynamic Fuel Management that enables the engine to operate in 17 different patterns between 2 and 8 cylinders, depending on demand, to optimize power delivery and efficiency
- Rear axle, 3.23 ratio- Durabed, pickup bed
- GVWR, 7100 lbs. (3221 kg) (Requires Crew Cab 4WD model with (L84) 5.3L EcoTec3 V8 engine or (L87) 6.2L EcoTec3 V8 engine without (NHT) Max Trailing Package.)
- Automatic Stop/Start (Standard on vehicles equipped with (MQE) 8-speed automatic transmission or (LM2) Duramax 3.0L Turbo-Diesel I6 engine. Vehicles with a V8 engine and (MQB) 10-speed automatic will have (NSS) Not Equipped with Automatic Stop/Start, which removes Automatic Stop/Start and its content. See dealer for details.)
- Transfer case, two-speed electronic Autotrac with push button control (4WD models only)
- Auto-locking rear differential- Four wheel drive
- Cooling, external engine oil cooler (Not available with (LM2) Duramax 3.0L Turbo-Diesel I6 engine.)
- Cooling, auxiliary external transmission oil cooler (Not available with (LM2) Duramax 3.0L Turbo-Diesel I6 engine.)
- Battery, heavy-duty 730 cold-cranking amps/80 Amp-hr, maintenance-free with rundown protection and retained accessory power
- Alternator, 170 amps (Included and only available with (L84) 5.3L EcoTec3 V8 engine or (L87) 6.2L EcoTec3 V8 engine. Not available with (LM2) Duramax 3.0L Turbo-Diesel I6 engine or (NHT) Max Trailing Package.)
- Trailer brake controller, integrated- Frame, fully-boxed, hydroformed front section
- Steering, Electric Power Steering (EPS) assist, rack-and-pinion
- Brakes, 4-wheel antilock, 4-wheel disc with DURALIFE rotors- Brake lining wear indicator
- Capless Fuel Fill- Exhaust, dual with polished outlets

615 NC-66 South  
Kernersville, NC 27284

© 2024 AutoRevo - All rights reserved. - Powered by AutoRevo