



2018 RAM 5500 4X4 HEMI LANDSCAPE CONTRACTOR DUMP ONLY 12K MILES WOW

Our Price \$54,900

View this vehicle on our website at njtrucking.com

King of Cars and Trucks

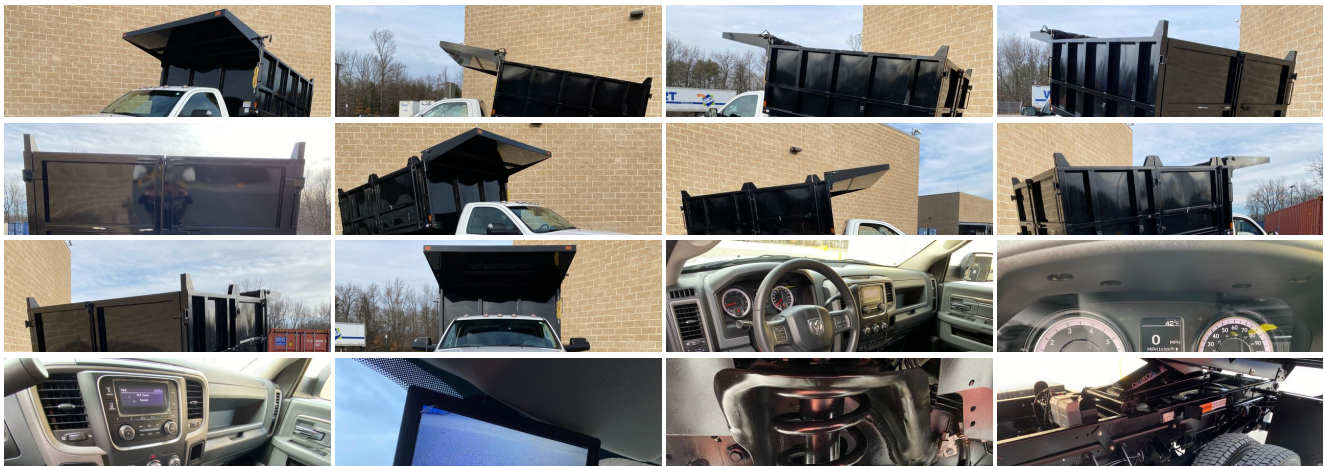
856-693-3181

1229 Broadway , Westville, New Jersey 08093

Photos

Details

Contact





Specifications:

Year:	2018
VIN:	3C7WRNAJ5JG371756
Make:	RAM 5500 4X4 HEMI
Model/Trim:	LANDSCAPE CONTRACTOR DUMP ONLY 12K MILES WOW
Condition:	Pre-Owned
Body:	Pickup Truck
Exterior:	White
Engine:	ENGINE: 6.4L V8 HEAVY DUTY HEMI
Interior:	Gray
Mileage:	12,584
Drivetrain:	4 Wheel Drive

Vehicle Description

LIKE NEW LANDSCAPE CONTRACTOR DUMP!

2018 RAM 5500 DRW 4X4

6.4L HEMI GAS

CONTRACTOR LANDSCAPE DUMP BODY W/ SIDE DOOR ENTRY

ROLL UP TARP

(ONLY 12,584 ORIGINAL / ACTUAL MILES)

1-OWNER

NO ACCIDENTS

AUTOMATIC TRANSMISSION

RUNS DRIVES AND SHOWS LIKE NEW

GARAGE KEPT

LOADED WITH OPTIONS

TRAILER BRAKE CONTROLLER & MORE

READY TO WORK!

DONT MISS IT!

BUY IT NOW

\$54,900

CALL / TEXT ROB 856-381-6621 WITH ANY QUESTIONS

Installed Options

Interior

- 40/20/40 Split Bench Seat- HD Vinyl 40/20/40 Split Bench Seat
- 2 12V DC Power Outlets
- 4-Way Passenger Seat -inc: Manual Recline and Fore/Aft Movement
- Analog Appearance- Cruise Control w/Steering Wheel Controls
- Day-Night Rearview Mirror- Delayed Accessory Power- Driver Seat
- Electronically Controlled Throttle- Fade-To-Off Interior Lighting- Full Cloth Headliner
- Full Vinyl/Rubber Floor Covering
- Gauges -inc: Speedometer, Odometer, Voltmeter, Oil Pressure, Engine Coolant Temp, Tachometer, Oil Temperature, Transmission Fluid Temp, Engine Hour Meter and Trip Odometer
- Glove Box- Instrument Panel Bin, Dashboard Storage, Driver And Passenger Door Bins
- Interior Trim -inc: Deluxe Sound Insulation - Manual 1st Row Windows
- Manual Adjust Seats- Manual Adjustable Front Head Restraints
- Manual Air Conditioning- Manual Tilt Steering Column- Mini Floor Console
- Passenger Visor Vanity Mirror- Redundant Digital Speedometer
- Seats w/Vinyl Back Material- Sentry Key Engine Immobilizer - Systems Monitor
- Urethane Gear Shifter Material

Exterior

- Tires: 225/70R19.5G All Position FT, RR Traction- Wheels: 19.5" x 6.0" Steel
- Auto On/Off Aero-Composite Halogen Headlamps w/Delay-Off - Black Door Handles
- Black Fender Flares- Black Front Bumper w/2 Tow Hooks- Black Grille
- Black Manual Side Mirrors w/Convex Spotter and Manual Folding
- Black Side Windows Trim and Black Front Windshield Trim - Cab Clearance Lights
- Fixed Rear Window- Front License Plate Bracket- Fully Galvanized Steel Panels
- Light Tinted Glass- Manual Extendable Trailer Style Mirrors
- Variable Intermittent Wipers

Safety

- 40/20/40 Split Bench Seat- HD Vinyl 40/20/40 Split Bench Seat
- 2 12V DC Power Outlets
- 4-Way Passenger Seat -inc: Manual Recline and Fore/Aft Movement
- Analog Appearance- Cruise Control w/Steering Wheel Controls
- Day-Night Rearview Mirror- Delayed Accessory Power- Driver Seat
- Electronically Controlled Throttle- Fade-To-Off Interior Lighting- Full Cloth Headliner
- Full Vinyl/Rubber Floor Covering
- Gauges -inc: Speedometer, Odometer, Voltmeter, Oil Pressure, Engine Coolant Temp, Tachometer, Oil Temperature, Transmission Fluid Temp, Engine Hour Meter and Trip Odometer
- Glove Box- Instrument Panel Bin, Dashboard Storage, Driver And Passenger Door Bins
- Interior Trim -inc: Deluxe Sound Insulation - Manual 1st Row Windows
- Manual Adjust Seats- Manual Adjustable Front Head Restraints
- Manual Air Conditioning- Manual Tilt Steering Column- Mini Floor Console
- Passenger Visor Vanity Mirror- Redundant Digital Speedometer
- Seats w/Vinyl Back Material- Sentry Key Engine Immobilizer - Systems Monitor
- Urethane Gear Shifter Material

Mechanical

- Transmission w/Driver Selectable Mode, Sequential Shift Control and Oil Cooler
- Transmission: 6-Speed Auto Aisin AS66RC HD - 10736# Maximum Payload
- 180 Amp Alternator
- 4-Wheel Disc Brakes w/4-Wheel ABS, Front And Rear Vented Discs - 4.44 Axle Ratio
- 50 State Emissions- 52 Gal. Fuel Tank
- 730CCA Maintenance-Free Battery w/Run Down Protection- Auto Locking Hubs
- Engine Oil Cooler- Engine: 6.4L V8 Heavy Duty HEMI
- Front Anti-Roll Bar and Rear HD Anti-Roll Bar- GVWR: 18,000 lbs
- HD Shock Absorbers- Hydraulic Power-Assist Steering
- Leading Link Front Suspension w/Coil Springs- Leaf Rear Suspension w/Leaf Springs
- Manual Transfer Case- Mechanical Limited Slip Differential
- Part-Time Four-Wheel Drive- Single Stainless Steel Exhaust
- Towing Equipment -inc: Trailer Sway Control- Trailer Wiring Harness- Upfitter Switches

Option Packages

Factory Installed Packages

ENGINE: 6.4L V8 HEAVY DUTY HEMI

King of Cars and Trucks

View this car on our website at njtruckking.com/7048321

Website: njtruckking.com

Phone: [856-693-3181](tel:856-693-3181)

Map: [1229 Broadway, Westville, New Jersey 08093](#)

