

2014 Ford Focus SE

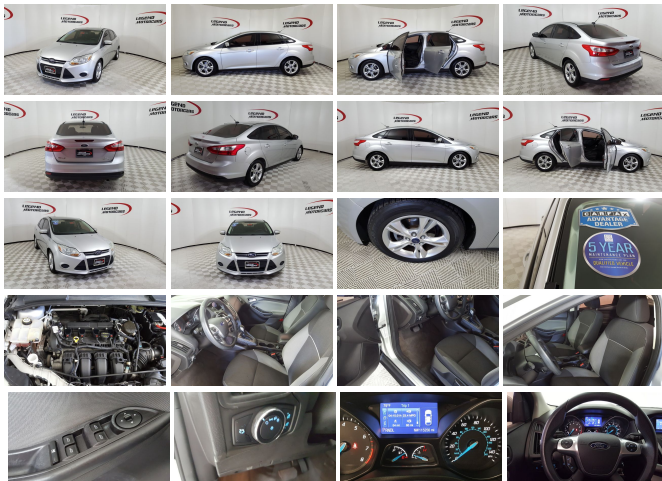
View this car on our website at legendmotorcars.com/7046780/ebrochure



Website Price **\$14,450**

Specifications:

Year:	2014
VIN:	1FADP3F2XEL263759
Make:	Ford
Stock:	18407
Model/Trim:	Focus SE
Condition:	Pre-Owned
Body:	Sedan
Exterior:	Ingot Silver Metallic
Engine:	2.0L I-4
Interior:	Medium Light Stone Cloth
Mileage:	115,256
Drivetrain:	Front Wheel Drive
Economy:	City 26 / Highway 36



Take a look at this Stylish, Fuel Efficient and Clean 2014 Ford Focus. This Focus is powered by a economical Duratec 2.0 liter 16 valve GDI engine mated with a smooth shifting automatic transmission and is capable of over 35 mpg. It is equipped with power windows and locks, tilt/telescoping wheel w/audio controls, cruise, power mirrors, front/side airbags, safety curtain, anti lock brakes, traction control, drivers information center, SYNC voice activated communications & entertainment system, Bluetooth, AM/FM CD with aux audio jack/USB and Alloy wheels.

All of our vehicles undergo an extensive multi point inspection/reconditioning. We now offer a complimentary 5 year maintenance plan on all vehicles in stock. We specialize in Guaranteed approvals, affordable down payments and payment plans for most any budget. We also have a clean and clear title plus Free CarFax Buyback Guarantee. For more information please call 972-272-7500 or visit www.legendmotorcars.com. We Want to Earn Your Business!

2014 Ford Focus SE

Legend Motorcars Garland - 469-998-7370 - View this car on our website at legendmotorcars.com/7046780/ebrochure

Vehicle History Report : as Of 04/19/2024



Snapshot

2014 FORD FOCUS SE



Accident reported: minor damage



11 Service history records



4 Previous owners



Personal vehicle



115,273 Last reported odometer reading



FREE CARFAX Report

See the full CARFAX Report for additional information

*carfax Snapshot is a reflection of available information on the date the report was pulled. carfax is constantly being updated with new information and is subject to change at any time.

Our Location :



2014 Ford Focus SE

Legend Motorcars Garland - 469-998-7370 - View this car on our website at legendmotorcars.com/7046780/ebrochure

Installed Options

Interior

- Remote Keyless Entry w/Integrated Key Transmitter, Illuminated Entry and Panic Button
- 2 12V DC Power Outlets- 2 Seatback Storage Pockets- 4-Way Passenger Seat
- 6-Way Driver Seat- Air Filtration- Analog Appearance- Cargo Area Concealed Storage
- Cargo Space Lights- Carpet Floor Trim- Cloth Door Trim Insert
- Cloth Front Bucket Seats -inc: 4-way manual driver, 2-way manual passenger and adjustable headrests
- Compass- Cruise Control w/Steering Wheel Controls- Day-Night Rearview Mirror
- Delayed Accessory Power
- Driver And Passenger Visor Vanity Mirrors w/Driver And Passenger Illumination
- Driver Foot Rest- FOB Controls -inc: Cargo Access- Fade-To-Off Interior Lighting
- Front Center Armrest- Front Cupholder
- Full Carpet Floor Covering -inc: Carpet Front Floor Mats - Full Cloth Headliner
- Full Floor Console w/Covered Storage and 2 12V DC Power Outlets
- Full Folding Bench Front Facing Fold Forward Seatback Cloth Rear Seat
- Gauges -inc: Speedometer, Odometer, Engine Coolant Temp, Tachometer, Trip Odometer and Trip Computer
- Glove Box- HVAC -inc: Underseat Ducts
- Instrument Panel Bin, Driver / Passenger And Rear Door Bins
- Interior Trim -inc: Chrome Interior Accents - Manual Air Conditioning
- Manual Tilt/Telescoping Steering Column
- Manual w/Tilt Front Head Restraints and Manual Adjustable Rear Head Restraints

Option Packages

Factory Installed Packages

ENGINE: 2.0L I-4 GDI TI-VCT FLEX FUEL

- Outside Temp Gauge- Power 1st Row Windows w/Driver 1-Touch Down
- Power Door Locks w/Autolock Feature- Power Rear Windows- Rear Cupholder
- SYNC Communications & Entertainment System -inc: 911 Assist, VHR, SYNC Services, AppLink, Bluetooth, steering wheel controls, USB port and auxiliary input jack
- Seats w/Cloth Back Material- Securilock Anti-Theft Ignition (pats) Engine Immobilizer
- Systems Monitor- Trip Computer- Urethane Gear Shifter Material

Exterior

- Tires: 16"- Wheels: 16" Painted Aluminum Alloy
- Auto On/Off Aero-Composite Halogen Headlamps w/Delay-Off
- Black Side Windows Trim and Black Front Windshield Trim - Body-Colored Door Handles
- Body-Colored Front Bumper
- Body-Colored Power Side Mirrors w/Convex Spotter and Manual Folding
- Body-Colored Rear Bumper- Clearcoat Paint
- Compact Spare Tire Mounted Inside Under Cargo- Fixed Rear Window w/Defroster
- Fully Galvanized Steel Panels- Grille w/Chrome Bar- Light Tinted Glass
- Perimeter/Approach Lights- Steel Spare Wheel- Trunk Rear Cargo Access
- Variable Intermittent Wipers

Safety

- Remote Keyless Entry w/Integrated Key Transmitter, Illuminated Entry and Panic Button
- 2 12V DC Power Outlets- 2 Seatback Storage Pockets- 4-Way Passenger Seat
- 6-Way Driver Seat- Air Filtration- Analog Appearance- Cargo Area Concealed Storage
- Cargo Space Lights- Carpet Floor Trim- Cloth Door Trim Insert
- Cloth Front Bucket Seats -inc: 4-way manual driver, 2-way manual passenger and adjustable headrests
- Compass- Cruise Control w/Steering Wheel Controls- Day-Night Rearview Mirror
- Delayed Accessory Power
- Driver And Passenger Visor Vanity Mirrors w/Driver And Passenger Illumination
- Driver Foot Rest- FOB Controls -inc: Cargo Access- Fade-To-Off Interior Lighting
- Front Center Armrest- Front Cupholder
- Full Carpet Floor Covering -inc: Carpet Front Floor Mats- Full Cloth Headliner
- Full Floor Console w/Covered Storage and 2 12V DC Power Outlets
- Full Folding Bench Front Facing Fold Forward Seatback Cloth Rear Seat
- Gauges -inc: Speedometer, Odometer, Engine Coolant Temp, Tachometer, Trip Odometer and Trip Computer
- Glove Box- HVAC -inc: Underseat Ducts
- Instrument Panel Bin, Driver / Passenger And Rear Door Bins
- Interior Trim -inc: Chrome Interior Accents - Manual Air Conditioning
- Manual Tilt/Telescoping Steering Column
- Manual w/Tilt Front Head Restraints and Manual Adjustable Rear Head Restraints
- Outside Temp Gauge- Power 1st Row Windows w/Driver 1-Touch Down
- Power Door Locks w/Autolock Feature- Power Rear Windows- Rear Cupholder
- SYNC Communications & Entertainment System -inc: 911 Assist, VHR, SYNC Services, AppLink, Bluetooth, steering wheel controls, USB port and auxiliary input jack
- Seats w/Cloth Back Material- Securilock Anti-Theft Ignition (pats) Engine Immobilizer
- Systems Monitor- Trip Computer- Urethane Gear Shifter Material

Mechanical

- Transmission: 5-Speed Manual- 12.4 Gal. Fuel Tank- 3.82 Axle Ratio
- 590CCA Maintenance-Free Battery w/Run Down Protection
- Brake Actuated Limited Slip Differential- Electric Power-Assist Steering
- Engine: 2.0L I-4 GDI Ti-VCT Flex Fuel- Front And Rear Anti-Roll Bars
- Front Disc/Rear Drum Brakes w/4-Wheel ABS, Front Vented Discs and Brake Assist
- Front-Wheel Drive- Gas-Pressurized Shock Absorbers
- Short And Long Arm Rear Suspension w/Coil Springs- Single Stainless Steel Exhaust
- Strut Front Suspension w/Coil Springs

Legend Motorcars Garland

legendmotorcars.com

469-998-7370

1901 Forest Lane

Garland, TX 75042

© 2024 AutoRevo - All rights reserved. - Powered by AutoRevo

